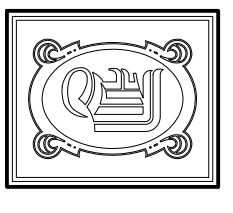
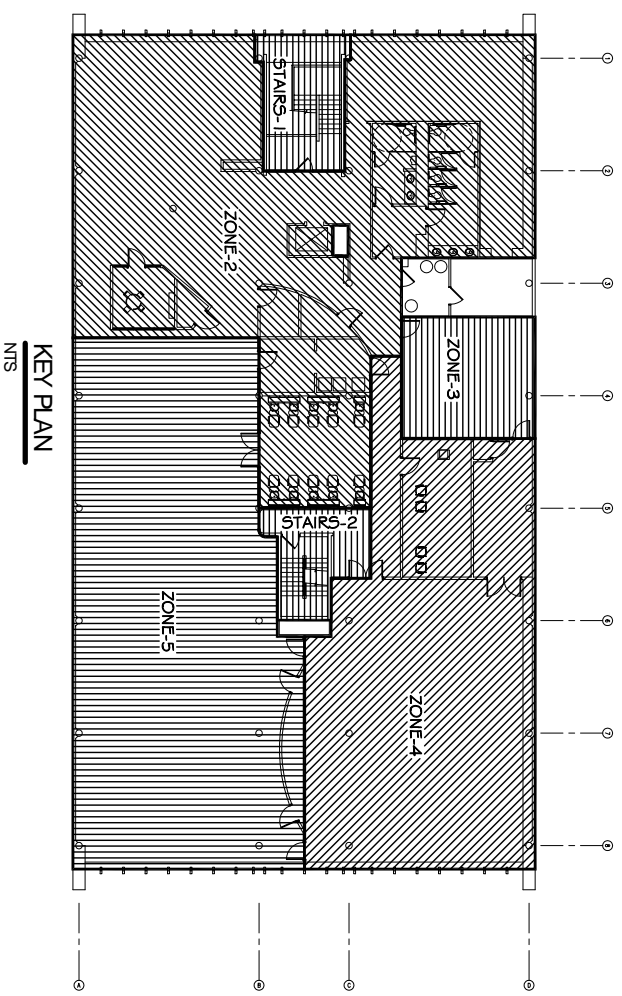
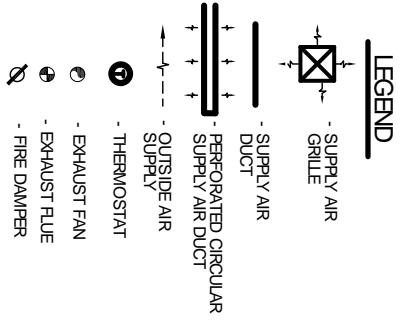


SECOND FLOOR MECHANICAL PLAN
SCALE: 1/8" = 1'



DAMMON
ENGINEERING, INC.

CHIEF ENGINEER
EMMETT DAMMON, P.E.

CHIEF ARCHITECT
ROBERT WILTSE

1095 FLORIDA AVENUE
SUITE L.A. 70459
OFFICE: 905-649-5832
FAX: 905-641-5950

WEBSITE:
WWW.DAMMONENGINEERING.COM
EMAIL:
DAMMONING@BLLSOUTH.NET

ARCHITECTURE
ENGINEERING
STUDIES
PLANNING
INVESTIGATION
EXPERT WITNESS

PAUL MITCHELL
SCHOOL
8321 HESSMER AVE
METAIRIE, LA
70002

SECOND FLOOR
MECHANICAL
PLAN

REV:	
SCALE:	AS NOTED
JOB#:	2051
DATE:	02-05-10
SHEET	
OF	M-2