

DAMMON
ENGINEERING, INC.

CHIEF ENGINEER
EMMETT
DAMMON, P.E.

CHIEF ARCHITECT
ROBERT
WILTSE

1095 FLORIDA AVENUE
SUITE LL, LA, 70458
OFFICE: 985-649-5832
FAX: 985-641-5950

WEBSITE:
WWW.DAMMONENGINEERING.COM

EMAIL:
DAMMONENR@DELLSOUTH.NET

ARCHITECTURE
ENGINEERING
STUDIES
PLANNING
INVESTIGATION
EXPERT WITNESS

PAUL MITCHELL
SCHOOL
33321 HESSMER AVE
METAIRIE, LA
70002

FIRST FLOOR
PLUMBING
PLAN

REV: _____

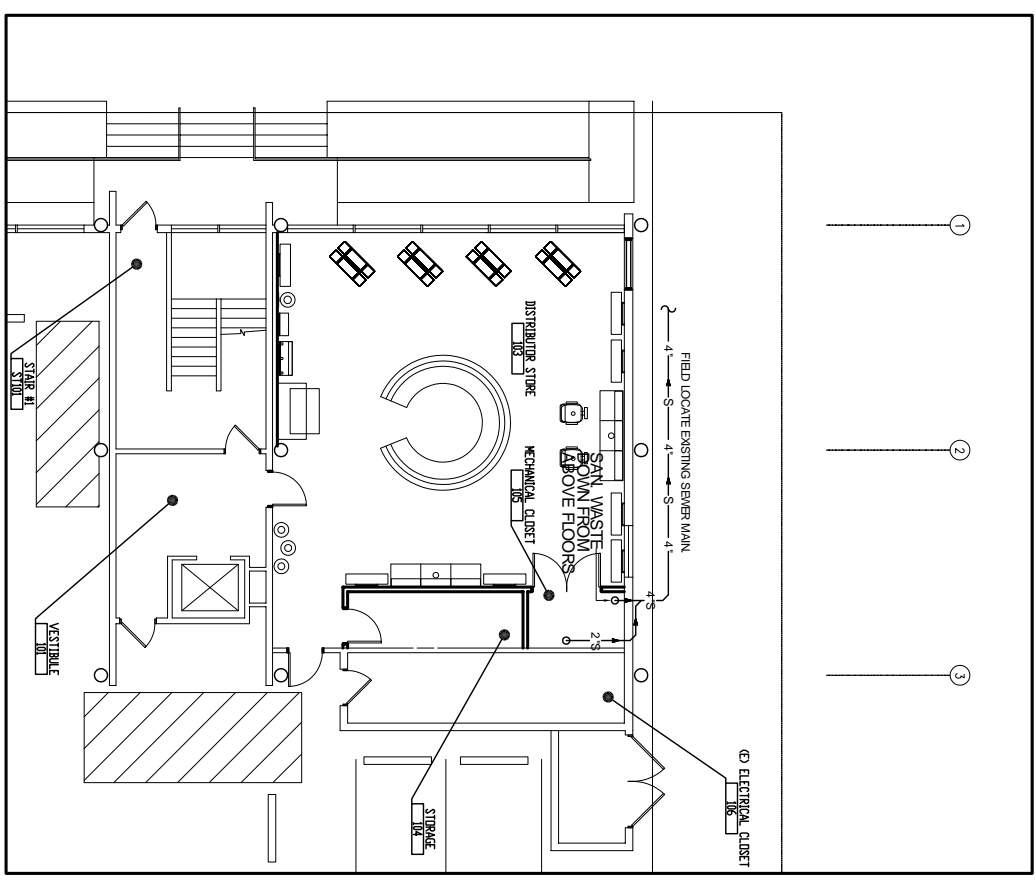
SCALE: AS NOTED

JOB#: 2051

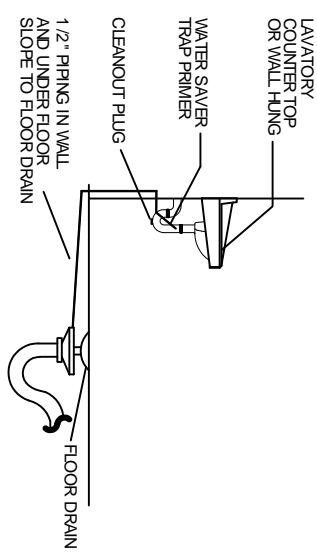
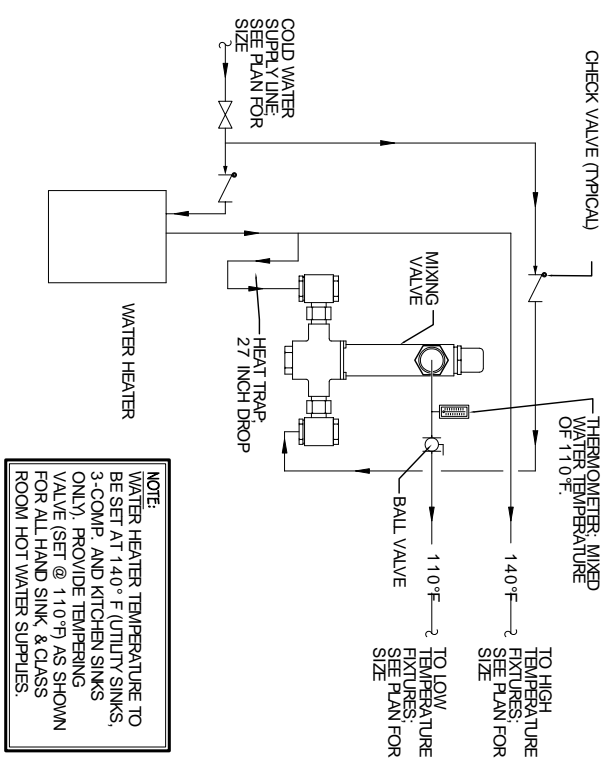
DATE: 01-04-10

SHEET

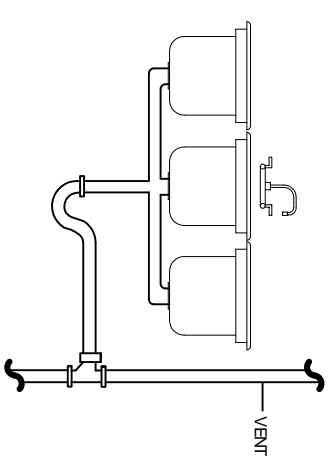
OF



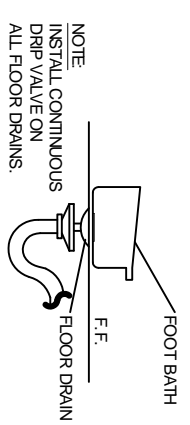
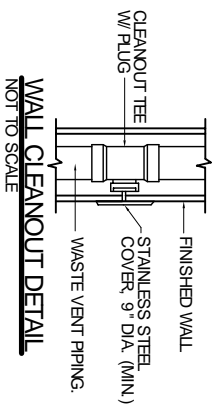
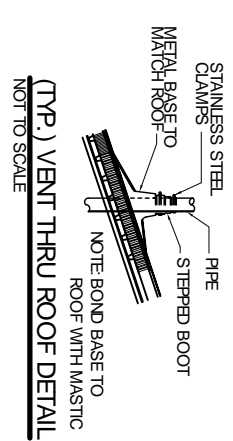
FIRST FLOOR PLUMBING PLAN



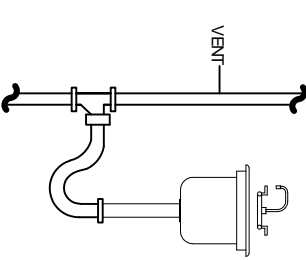
RESTROOM FLOOR DRAIN DETAIL



3 COMP SINK W/ HUB DRAIN



FOOT BATH DRAIN DETAIL IN NAIL CLINIC



TYPICAL SINK WITH HUB DRAIN DETAIL

HUB DRAIN MUST BE EQUIPPED WITH A BASKET OR OTHER DEVICE WHICH SHALL PREVENT PASSAGE OF SOLIDS 1/2" OR LARGER. THIS BASKET OR DEVICE SHALL BE REMOVABLE FOR CLEANING.