

DAMMON ENGINEERING, INC.

CHIEF ENGINEER
EMMETT DAMMON, P.E.

CHIEF ARCHITECT
ROBERT WILTSE

1095 FLORIDA AVENUE
SLIDELL, LA. 70458
OFFICE: 985-649-5832
FAX: 985-641-5950

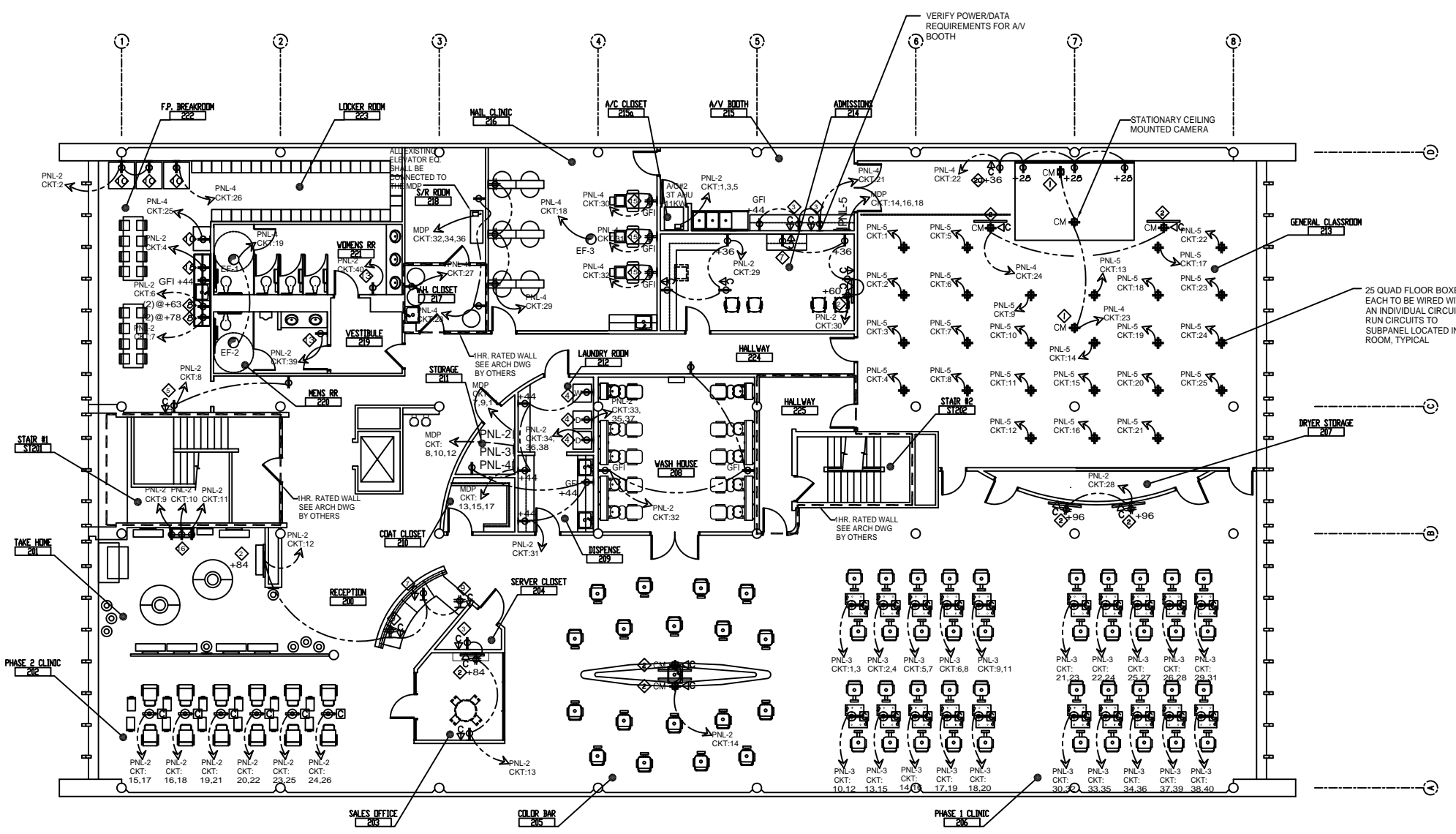
WEBSITE:
WWW.DAMMONENGINEERING.COM

EMAIL:
DAMMONENG@BELLSOUTH.NET

- ARCHITECTURE
- ENGINEERING
- STUDIES
- PLANNING
- INVESTIGATION
- EXPERT WITNESS

PAUL MITCHELL
SCHOOL
3321 HESSMER AVE.
METAIRIE, LA
70002

SECOND FLOOR POWER PLAN



SECOND FLOOR POWER PLAN
SCALE: 1/8"=1'

FOR GENERAL ELECTRIC NOTES SEE SHEET E-9
FOR ELECTRIC PANEL SCHEDULES SEE SHEET E-8

SPECIALTY NOTES

- | | |
|---|--|
| <p>1 CEILING RECEPTACLE PROVIDED WITH AV PROJECTOR CEILING MOUNT PANEL.</p> <p>2 PROVIDE CABLE AND QUAD RECEPTACLE FOR FLATSCREEN TELEVISION, COORDINATE MOUNTING HEIGHT WITH A.V. CONSULTANT</p> <p>3 AV RACK FOR EQUIPMENT LOCATED IN CLOSET, COORDINATE EXACT POWER REQUIREMENT AND LOCATION WITH AV CONSULTANT.</p> <p>4 OWNER PROVIDED WASHER AND DRYER, VERIFY EXACT POWER, GAS, AND PLUMBING REQUIREMENTS WITH MANUFACTURER OF SELECTED UNITS.</p> <p>5 VERIFY POWER AND DATA REQUIREMENTS FOR TIME CLOCK, COORDINATE LOCATION WITH OWNER.</p> <p>7 PROVIDE POWER AND NETWORK CONNECTION FOR OWNER PROVIDED COPIER/PRINTER; VERIFY EQUIPMENT WITH OWNER.</p> <p>8 PROVIDE 2 DUPLEX OUTLETS, EACH WITH A DEDICATED CIRCUIT FOR 2 MICROWAVES. COORDINATE HEIGHTS WITH WALL SHELVES FOR MICROWAVES.
(2) AT 63" AFF AND (2) AT 78" AFF VERIFY WITH WADSWORTH DESIGN.</p> <p>9 PROVIDE POWER AND NETWORK CONNECTION FLOOR BOXES FOR OWNER PROVIDED COMPUTERS AND POINT OF SALE EQUIPMENT; VERIFY EQUIPMENT WITH OWNER. VERIFY EXACT LOCATION WITH WADSWORTH DESIGN.</p> | <p>10 PROVIDE POWER FOR OWNER PROVIDED REFRIDGERATORS AND VENDING MACHINES; VERIFY EQUIPMENT WITH OWNER.</p> <p>12 GAS HOT WATER HEATERS AND RECIRCULATING PUMP. REFER TO MEP DRAWINGS AND CUT SHEETS FOR REQUIREMENTS</p> <p>13 ELECTRIC HAND DRYER, REFER TO SHEET A401 AND A402 FOR DETAILS.</p> <p>15 PEDICURE STATIONS; PROVIDE GFI WALL OUTLET WITH DEDICATED CIRCUIT FOR EACH UNIT. REFER TO CUT SHEETS FOR DETAILS.</p> <p>16 WALL MOUNTED TOOL BAR BY WADSWORTH DESIGN; 3 OUTLETS WITH DEDICATED CIRCUITS REQ</p> <p>18 PROVIDE POWER FOR OWNER PROVIDED DISHWASHER AS REQUIRED.</p> <p>20 PROVIDE POWER AND DATA FOR LAPTOP OVER RIDE. VERIFY EXACT REQUIREMENTS AND LOCATION WITH AV CONSULTANT. (LOCATE DIRECTLY UNDER LCD SCREEN)</p> |
|---|--|

POWER LEGEND

- | | | | |
|--|--|--|---|
| | WALL MOUNTED FLUSH J-BOX | | FLUSH MOUNTED RECESSED JUNCTION BOX |
| | DUPLEX CONVENIENCE OUTLET | | CEILING MOUNTED OUTLET |
| | GROUND FAULT INDICATOR (GFI) RECEPTICAL. | | DATA CONNECTION. VERIFY WITH AV CONSULTANT AND COMPUTER, PHONE PROVIDER. |
| | EXTERIOR WALL MOUNTED WATER RESISTANT CONVENIENCE OUTLET. PROVIDE GROUND FAULT INDICATOR (GFI), TYPICAL. | | (2) CIRCUITS AT EACH STYLING STATION STUBBED THROUGH CONDUIT IN THE FLOOR. INSTALL FOURPLEX RECEPTACLE IN PRE-INSTALLED JUNCTION BOX IN STYLING STATION |
| | HALF SWITCHED CONVENIENCE OUTLET | | ELECTRIC PANEL |
| | FOURPLEX CONVENIENCE OUTLET | | |
| | FLOOR MOUNTED DUPLEX CONVENIENCE OUTLET | | |
| | FLOOR MOUNTED FOURPLEX CONVENIENCE OUTLET | | |

NOT APPROVED FOR CONSTRUCTION

REV:

SCALE: AS NOTED

JOB#:2051

DATE: 01-04-10

SHEET

E-2

OF