

**DAMMON ENGINEERING, INC.**

CHIEF ENGINEER  
EMMETT DAMMON, P.E.

CHIEF ARCHITECT  
ROBERT WILTSE

1095 FLORIDA AVENUE  
SLIDELL, LA. 70458  
OFFICE: 985-649-5832  
FAX: 985-641-5950

WEBSITE:  
WWW.DAMMONENGINEERING.COM

EMAIL:  
DAMMONENG@BELLSOUTH.NET

ARCHITECTURE

ENGINEERING

STUDIES

PLANNING

INVESTIGATION

EXPERT WITNESS

PAUL MITCHELL  
SCHOOL  
3321 HESSMER AVE.  
METAIRIE, LA  
70002

ROOF  
MECHANICAL  
EQUIPMENT  
PLAN

REV:

SCALE: AS NOTED

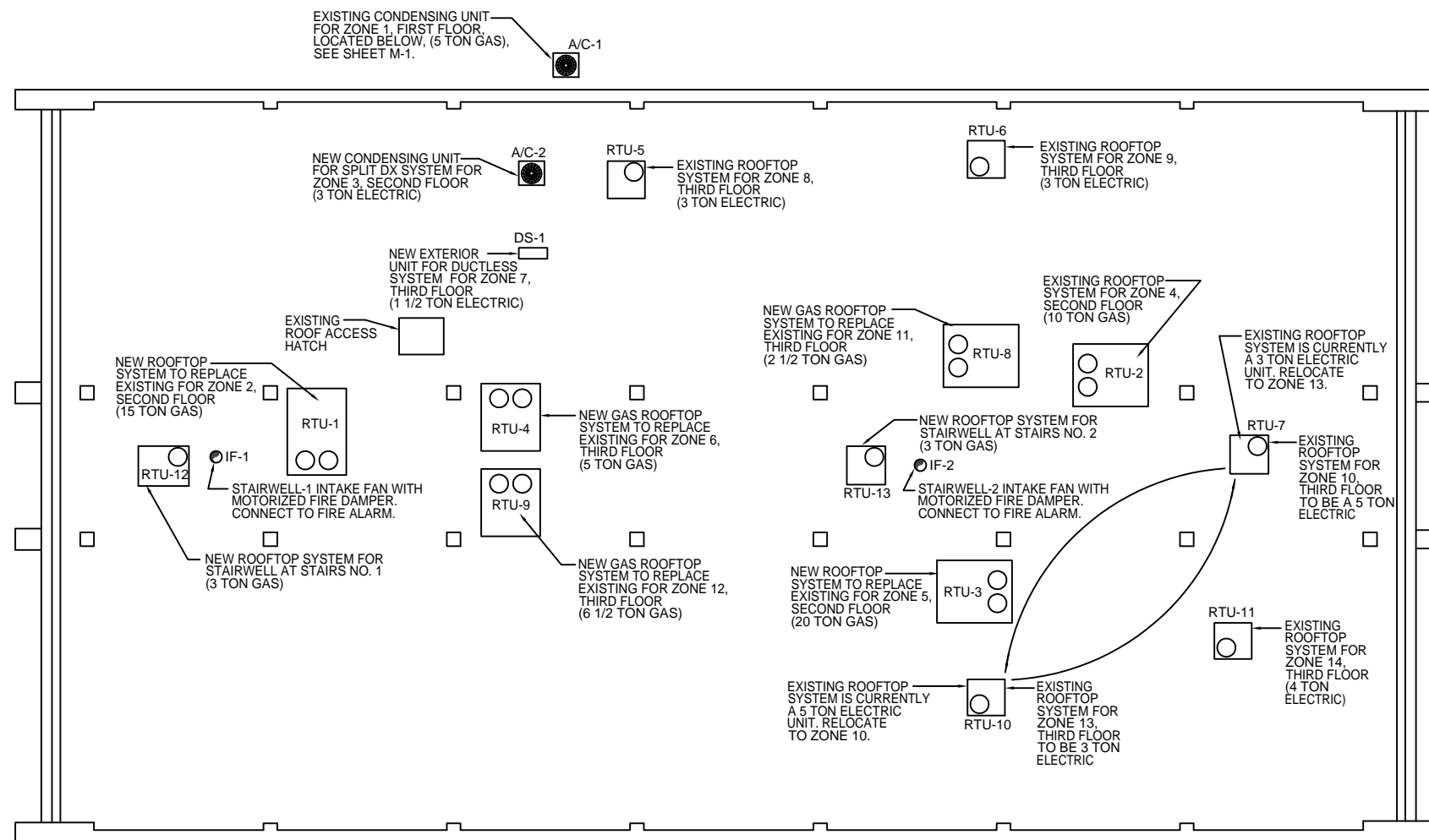
JOB#: 2051

DATE: 01-04-10

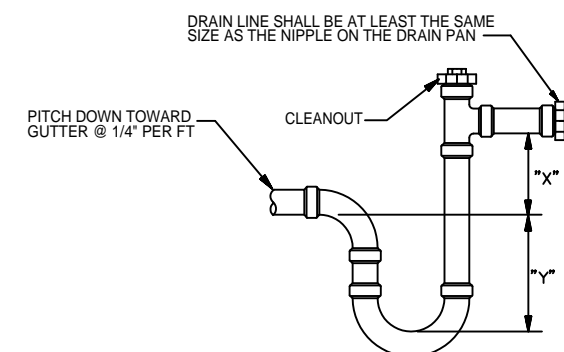
SHEET

**M-6**

OF

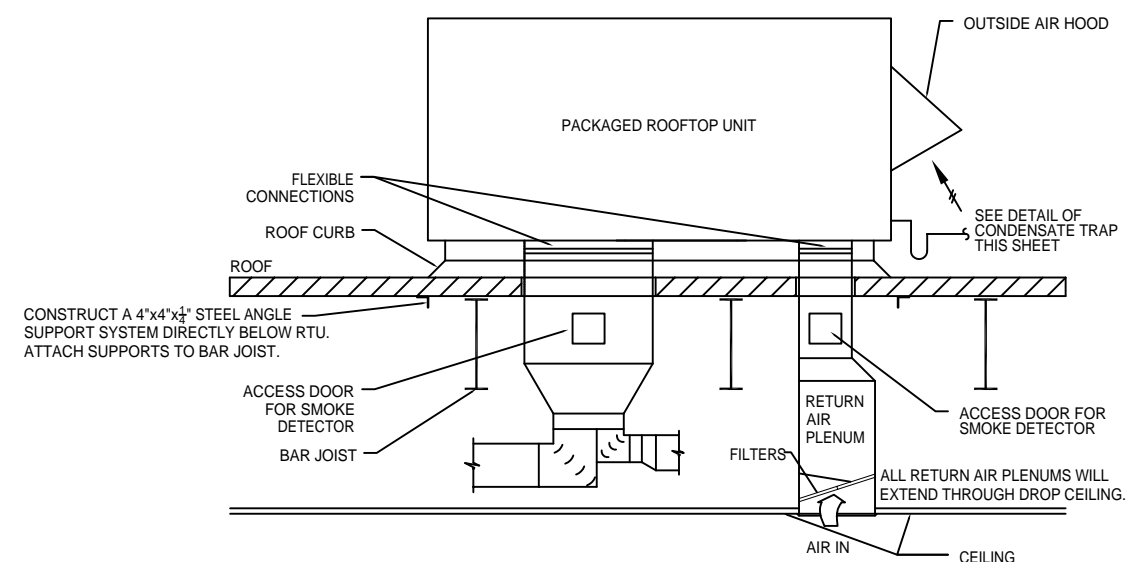


ROOF MECHANICAL EQUIPMENT PLAN  
SCALE: 1/8"=1'



NOTES:  
LENGTHS "X" AND "Y" SHALL BE DETERMINED BY ROOFTOP UNIT EQUIPMENT BASED ON TOTAL STATIC PRESSURE  
"X" AND "Y" SHALL BE EQUAL TO MINIMUM 1/2 TOTAL UNIT STATIC PRESSURE.  
ALL CONDENSATE PIPING SHALL BE SLOPED AT 1/4" PER FOOT

CONDENSATE TRAP DETAIL  
NOT TO SCALE



TYPICAL ROOFTOP UNIT DETAIL  
NOT TO SCALE

**NOT APPROVED FOR CONSTRUCTION**