

DAMMON ENGINEERING, INC.

CHIEF ENGINEER
EMMETT DAMMON, P.E.

CHIEF ARCHITECT
ROBERT WILTSE

1095 FLORIDA AVENUE
SUDELL, LA. 70458
OFFICE: 985-649-5832
FAX: 985-641-5950

WEBSITE:
WWW.DAMMONENGINEERING.COM

EMAIL:
DAMMONENG@BELLSOUTH.NET

ARCHITECTURE

ENGINEERING

STUDIES

PLANNING

INVESTIGATION

EXPERT WITNESS

PAUL MITCHELL
SCHOOL
3321 HESSMER AVE
METAIRIE, LA
70002

FIRST FLOOR
PLUMBING
PLAN

REV:

SCALE: AS NOTED

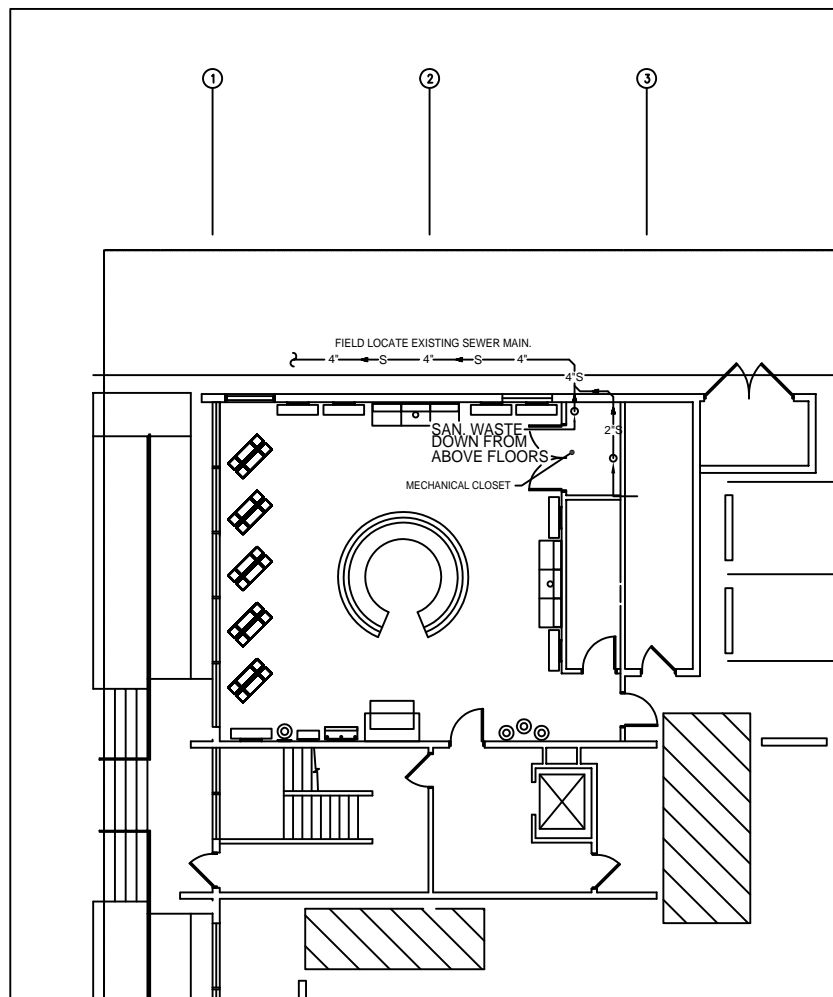
JOB#:2051

DATE: 01-04-10

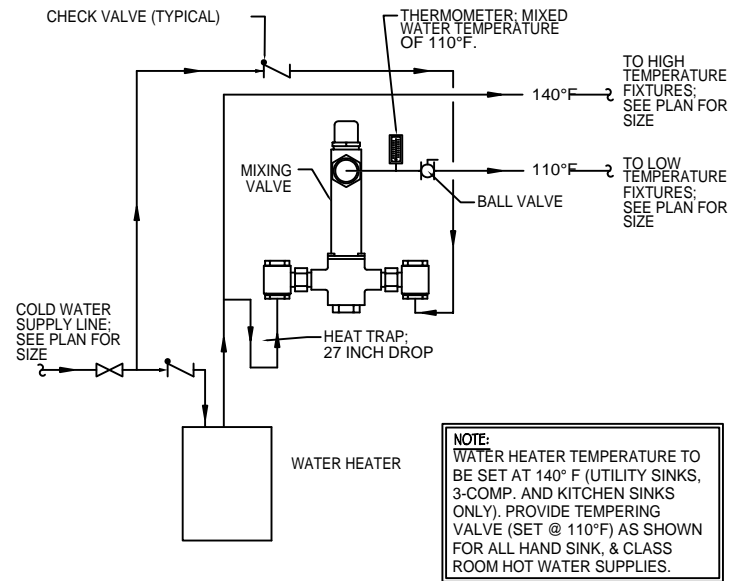
SHEET

P-1

OF



FIRST FLOOR PLUMBING PLAN

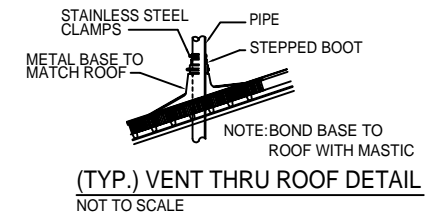


TEMPERED WATER VALVE

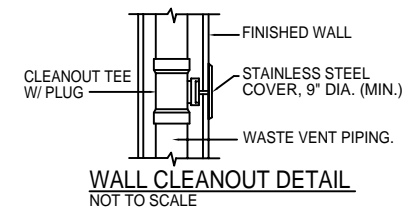
NOT TO SCALE

NOTES:
1. HEAT TRAP IS NOT REQUIRED WHERE MIXING VALVE IS INSTALLED BELOW STORAGE TANK OR WATER HEATER.
2. SET THE MIXING VALVE TO THE SYSTEM ACCORDING TO MANUFACTURER'S INSTRUCTIONS.

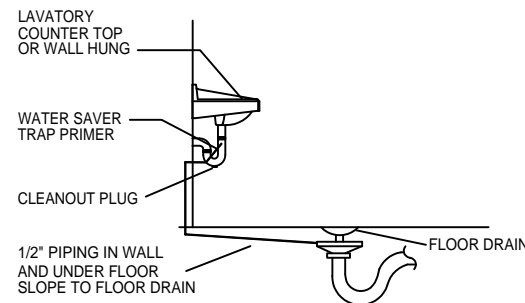
NOTE:
WATER HEATER TEMPERATURE TO BE SET AT 140° F (UTILITY SINKS, 3-COMP. AND KITCHEN SINKS ONLY). PROVIDE TEMPERING VALVE (SET @ 110°F) AS SHOWN FOR ALL HAND SINK, & CLASS ROOM HOT WATER SUPPLIES.



(TYP.) VENT THRU ROOF DETAIL

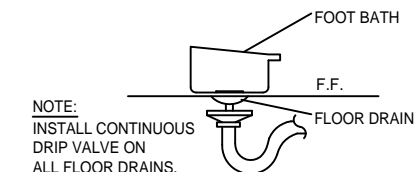


WALL CLEANOUT DETAIL



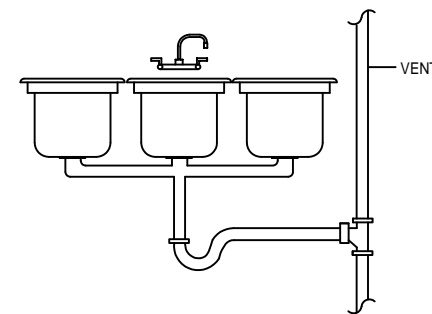
RESTROOM FLOOR DRAIN DETAIL

NOT TO SCALE



FOOT BATH DRAIN DETAIL IN NAIL CLINIC

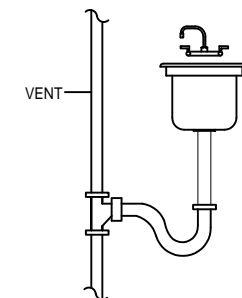
NOT TO SCALE



3 COMP SINK W/ HUB DRAIN

NOT TO SCALE

HUB DRAIN MUST BE EQUIPPED WITH A BASKET OR OTHER DEVICE WHICH SHALL PREVENT PASSAGE OF SOLIDS 1/2" OR LARGER. THIS BASKET OR DEVICE SHALL BE REMOVABLE FOR CLEANING.



TYPICAL SINK WITH HUB DRAIN DETAIL

NOT TO SCALE

NOT APPROVED FOR CONSTRUCTION