

DAMMON
ENGINEERING, INC.

CHIEF ENGINEER
EMMETT
DAMMON, P.E.

CHIEF ARCHITECT
ROBERT
WILTSE

1095 FLORIDA AVENUE
SLIDELL, LA. 70458
OFFICE: 985-649-5832
FAX: 985-641-5950

WEBSITE:
WWW.DAMMONENGINEERING.COM

EMAIL:
DAMMONENG@BELLSOUTH.NET

ARCHITECTURE
ENGINEERING
STUDIES
PLANNING
INVESTIGATION
EXPERT WITNESS

PAUL MITCHELL
SCHOOL
3321 HESSMER AVE.
METAIRIE, LA
70002

ROOF PLUMBING
PLAN

REV:

SCALE: AS NOTED

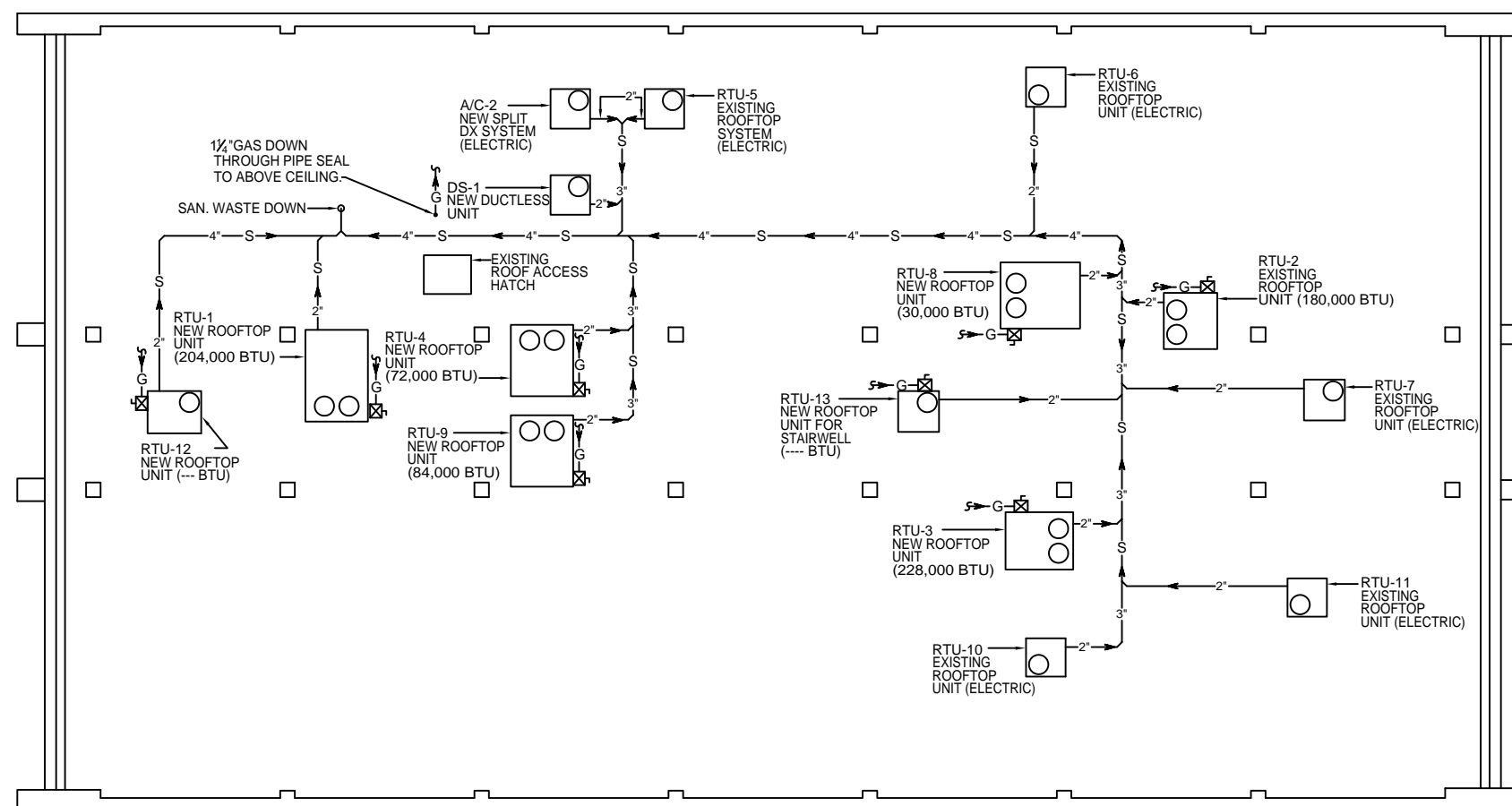
JOB#:2051

DATE: 01-04-10

SHEET

P-4

OF



ROOF PLUMBING PLAN
SCALE: 1/8"=1'

NOT APPROVED FOR CONSTRUCTION