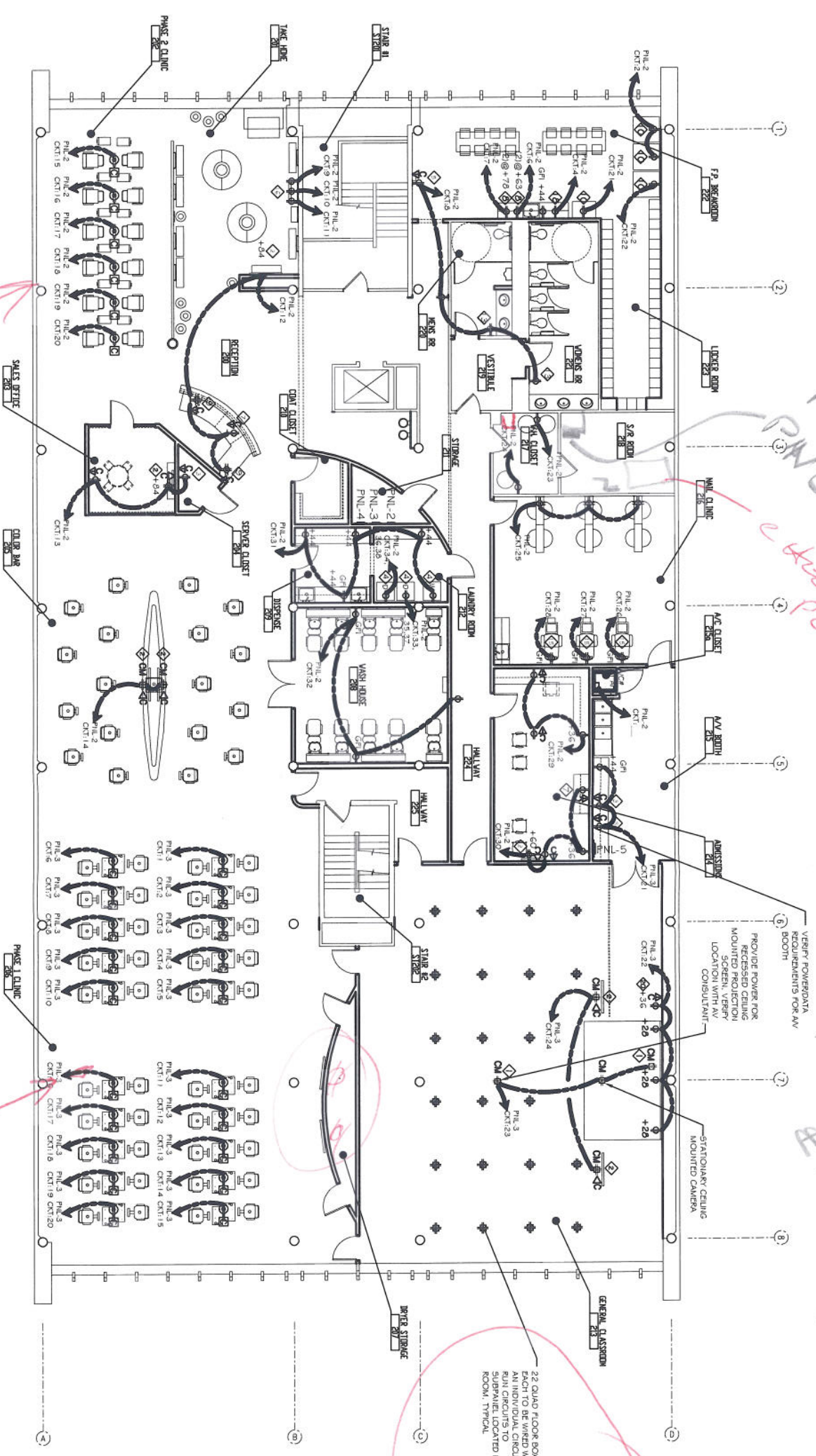
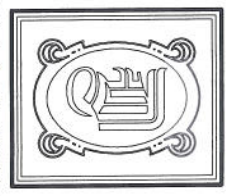


1201208

3 EMERGENCY LIGHTS
5 A/C #7
7 2ND FLOOR A/C #5 (S.W.)
9 2ND FLOOR A/C #6 (S.E.)
10 FRONT A/C



SECOND FLOOR POWER PLAN
SCALE: 1/8" = 1'



DAMMON ENGINEERING, INC.

CHIEF ENGINEER
EMMETT DAMMON, P.E.
CHIEF ARCHITECT
ROBERT WILTSE

1095 FLORIDA AVENUE
SLIDELL, LA, 70456
OFFICE: 985-649-5932
FAX: 985-641-5950

WEBSITE:
WWW.DAMMONENGINEERING.COM
EMAIL:
DAMMONENG@BLSOUTH.NET

ARCHITECTURE
ENGINEERING
STUDIES
PLANNING
INVESTIGATION
EXPERT WITNESS

PAUL MITCHELL
SCHOOL
3321 HESSMER AVE.
METAIRIE, LA
70002

SECOND FLOOR
POWER PLAN

REV:

SCALE: AS NOTED

JOB#: 2051

DATE: XX-XX-08

SHEET

E-2

OF

