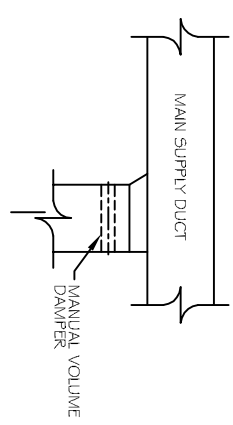
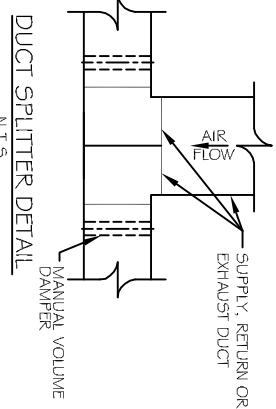


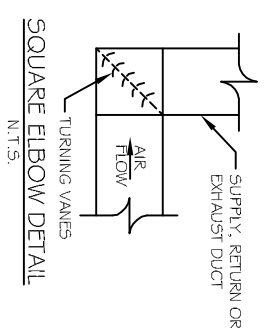
CONDENSING MOUNTING DETAIL
N.T.S.



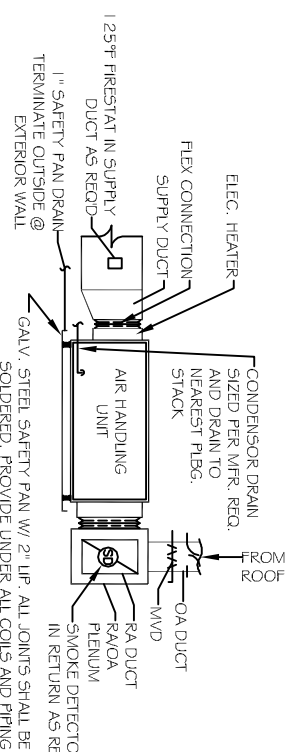
SUPPLY DUCT TAKE-OFF DETAIL
N.T.S.



DUCT SPLITTER DETAIL
N.T.S.



SQUARE ELBOW DETAIL
N.T.S.



TYPICAL HORIZONTAL AHU DETAIL
SCALE: N.T.S.

- HVAC NOTES**
1. CONCALED DUCTWORK TO BE UL-191, CLASS 1, FIRE-RESISTANT DUCTBOARD. DUCTS SHALL BE SIZED TO LIMIT MAIN DUCTS TO 1000 CFM & SECONDARY DUCTS TO 500 CFM. EXPOSED DUCTWORK TO BE GALVANIZED 30\"/>
 - 2. WIRE NEOPRENE COATED 1.0\"/>
 - 3. RIGID FLEXIBLE DUCT TO BE UL-191, CLASS 1, AIR DUCT MATERIALS.
 - 4. DUCT SIZES SHALL BE CLEAR INSIDE DIMENSIONS.
 - 5. IN ALL SPACES OVER 2000 CFM AND LESS THAN 15,000 CFM, SMOKE DETECTORS SHALL BE INSTALLED AT THE END OF THE DUCT RUN. DETECTORS SHALL BE INSTALLED AT THE END OF THE AIR HANDLING UNIT AND ALL BRANCHES TO AUTOMATICALLY STOP THE FAN. PROVIDE U.L. LISTED 125\"/>
 - 6. FAN TO SHUT DOWN THE FAN IN THE EVENT OF FIRE.
 - 7. PROVIDE U.L. LISTED FIRE DAMPERS WHERE REQUIRED AT ALL DUCT PENETRATIONS OF FIRE-RATED ASSEMBLIES AND WHERE REQUIRED BY CODE, INCLUDING OUTSIDE AIR INTAKES, AIR HANDLING UNITS.
 - 8. AIR HANDLING UNITS TO BE FIVE FEET SUN TO FINDER'S FIVE FEET WITHIN THE FEET OF THE UNIT.
 - 9. ALL AIR HANDLING SYSTEMS TO BE BALANCED TO ASSURE PROPER AIR FLOWS PER PLANS.
 - 10. ALL FLEXIBLE DUCTS TO BE AUTOMATIC-CHANGEOVER WITH HEAT SMOKE.
 - 11. EXHAUST FAN SHALL TO BE BROAN MODEL NO. 100 CF OR EQUAL. FAN SHALL BE CONTROLLED BY A SWITCH ON THE WALL IN THE SAME LOCATION AS LIGHT SWITCH(S).
 - 12. PROVIDE AND INSTALL WATER PROOF GRILLE VENT IN PROPER ROOF LOCATION FOR PLUMBING FIXTURE EXHAUST.
 - 13. ALL SUPPLY AIR VENTS SHALL BE EQUIPPED WITH AIR CONTROL DAMPERS.
 - 14. LOCATE OUTDOOR UNITS AS SHOWN ON A/C-DWG'S.
 - 15. RETURN/EXHAUST UNITS SHALL BE SIZED BY UNIT MANUFACTURER AND INSTALLED ACCORDING TO MANUFACTURER'S INSTRUCTIONS.
 - 16. REFRIG. AIR SHALL BE SUPPLIED TO EACH AIR HANDLER THROUGH EXTERIOR WALL DUCT INSTALLED WITH A CONTROL DAMPER.
 - 17. ALL ELECTRICAL, MECHANICAL, AND PLUMBING PENETRATING FIRE WALLS SHALL BE FIRE RATED. GASKETS OF SECTION 14.01 SHALL BE USED TO SEAL PENETRATIONS.
 - 18. ALL ELECTRICAL, MECHANICAL, AND PLUMBING PENETRATING FIRE WALLS SHALL BE FIRE RATED. GASKETS OF SECTION 14.01 SHALL BE USED TO SEAL PENETRATIONS.
 - 19. ALL VERTICAL SYSTEMS ARE DRAWN MECHANICALLY. CONTRACTOR TO VERIFY WITH OWNER LOCATIONS OF VENTS, DAMPERS, RECEIVERS, ETC.
 - 20. REFER TO STRUCTURAL DRAWINGS TO COORDINATE LOCATION(S) & MOUNTING OF MECHANICAL EQUIPMENT.
 - 21. REFER TO ELECTRICAL DRAWINGS FOR NOT TO SCALE.
 - 22. REFER TO ELECTRICAL DRAWINGS FOR FINAL GRILLE AND DIFFUSER LOCATIONS AND COORDINATE AS REQUIRED.
 - 23. FINAL LOCATION OF TEMPERATURE CONTROLS TO BE COORDINATED WITH OWNER AT JOB SITE.
 - 24. PROVIDE AND INSTALL SMOKE DETECTORS AS APPROVED BY LOCAL A.P.S. PLACE NEAR R/A AND S/A OPENINGS OF AHU AND PROVIDE WITH ACCESS PANEL, WIRING BY ELECTRICAL.
 - 25. REFRIG. AIR INTAKES ARE REQUIRED TO HAVE NOTICED OR GAINITY DAMPERS TO SHUT OFF WHEN SYSTEM IS NOT RUNNING. ALL THERMOSTATS MUST BE PROGRAMABLE. SEE SECTIONS 502.4.4 OR 503.2.4.3 OF THE 2006 INTERNATIONAL ENERGY CODE.

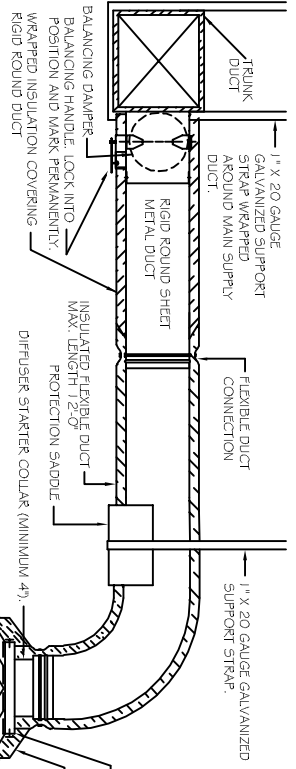
A/C UNIT SCHEDULE

NO.	TOTAL BTU	CFM	O.A.	HEAT ELECT.	ELECTRICAL WORK	OUT BRKR	COMMENTS
1	50,000	2,000	2/10	5 KW	200V, 3Ø	-	PAU
2	50,000	2,000	2/10	15 KW	200V, 3Ø	-	PAU

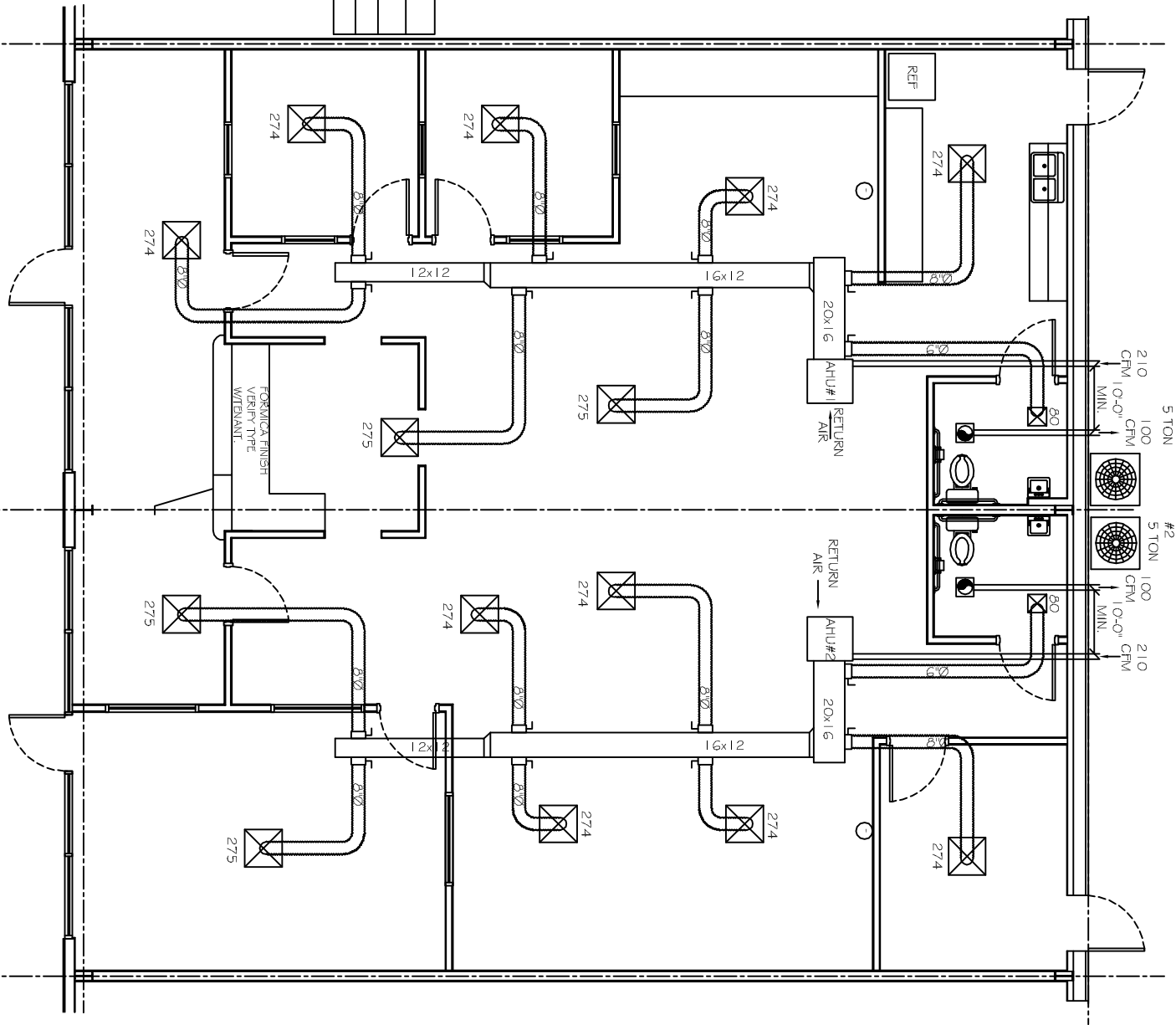
EXHAUST FAN SCHEDULE

FAN NO.	CFM	VOLTAGE	TYPE	YAHF
274	100	120	VENT/LIGHT	-
275	100	120	VENT/LIGHT	-

- LEGEND**
- ☒ 24x24 CEILING SPRINKLER
 - 12x12 DIFFUSERS IN TOLER ROOMS
 - THERMOSTAT
 - A/C UNIT



DIFFUSER CONNECTION DETAIL-FLEX DUCT
N.T.S.



MECHANICAL PLAN
SCALE: 1/4\"/>

DAMMON ENGINEERING INC.
Architects & Engineers

dammoneng@att.net
554 OLD SPANISH TRAIL
SUITE 1500
SUDELL, LA 70450
PHONE: 985-641-5832
FAX: 985-641-5950

SYLVAN LEARNING

TYLER SQUARE
584.65 TYLER STREET SUITE #3 & #4
SUDELL, LA

JOB No: 2153 DATE: 10-11-12
DRAWN BY: BSN CHECKED BY: BSN

REVISIONS

#	DESCRIPTION	DATE

M-1

SHEET No: 03 OF 4

MECHANICAL FLOOR PLAN