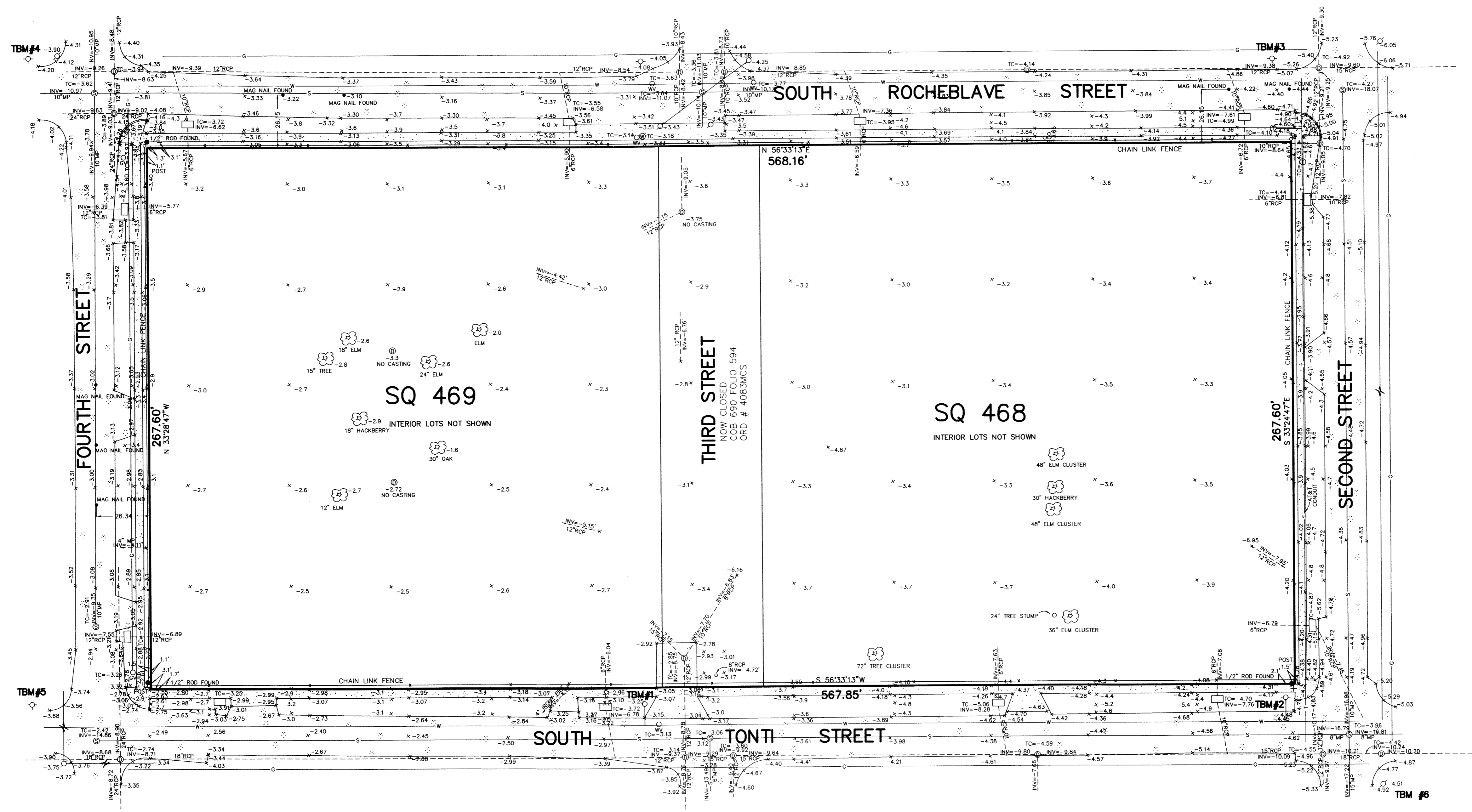
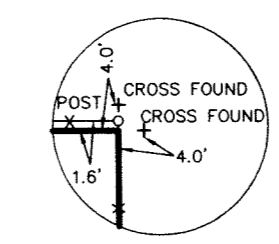
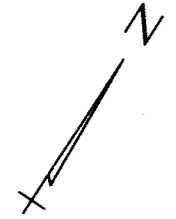


SQUARE 468 & 469
FOURTH DISTRICT
NEW ORLEANS
ORLEANS PARISH, LA



THIS PROPERTY IS LOCATED IN FIA FLOOD ZONE AB
BASE FLOOD ELEVATION = 1.5 NAVD88
COMMUNITY NUMBER 225203, PANEL 0160E, DATED MARCH 1, 1984.
ADVISORY BASE FLOOD ELEVATIONS ALSO REQUIRES MINIMUM
ELEVATION OF 3' ABOVE HIGHEST ADJACENT CURB.

ALL ELEVATIONS ARE IN FEET NAVD88 (2006.81)
BASED ON GPS OBSERVATIONS GEOID09

TBM #1: THE LETTERS PENN ON THE FIRE HYDRANT AT THE CORNER
OF 3RD STREET AND S. TONTI STREET.
ELEVATION = -1.22 NAVD88

TBM #2: THE LETTERS NY ON THE FIRE HYDRANT AT THE CORNER
OF 2ND STREET AND S. TONTI STREET.
ELEVATION = -2.32 NAVD88

TBM #3: THE LETTERS NY ON THE FIRE HYDRANT AT THE CORNER
OF 2ND STREET AND S. ROCHEBLAVE STREET.
ELEVATION = -2.17 NAVD88

TBM #4: THE LETTER PENN ON THE FIRE HYDRANT AT THE CORNER
OF 4TH STREET AND S. ROCHEBLAVE STREET
ELEVATION = -1.16 NAVD88

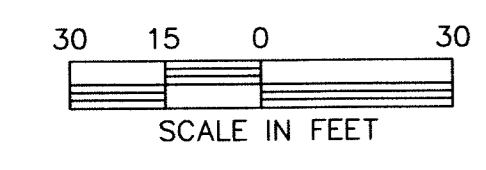
TBM #5: THE LETTERS PENN ON THE FIRE HYDRANT AT THE CORNER
OF 4TH STREET AND S. TONTI STREET.
ELEVATION = -1.13 NAVD88

TBM #6: A 60d NAIL SET IN A POWER POLE AT THE SOUTH EAST
CORNER OF SECOND STREET AND S. TONTI STREET.
ELEVATION = 1.50 NAVD88

- LEGEND**
- S — SEWER LINE
 - W — WATER LINE
 - G — GAS LINE
 - O — OVERHEAD UTILITY LINES
 - ⊗ GAS METER
 - ⊗ GAS VALVE
 - ⊗ WATER METER
 - ⊗ WATER VALVE
 - ⊗ FIRE HYDRANT
 - ⊗ DRAIN CLEANOUT
 - ⊗ SEWER CLEANOUT
 - ⊗ POWER POLE
 - ⊗ ANCHOR
 - ⊗ LIGHT POLE

The locations of underground and other nonvisible utilities shown hereon have been determined from data either furnished by the agencies controlling such data and/or extracted from records made available to us by the agencies controlling such records. Where found, the surface features of locations are shown. The actual nonvisible locations may vary from those shown hereon. Each agency should be contacted prior to any reliance upon the accuracy of such locations shown hereon, including prior to excavation and digging.

BEARINGS AND COORDINATES ARE BASED ON THE LOUISIANA COORDINATE SYSTEM OF 1983, SOUTH ZONE. INTERIOR LOT LINES ARE NOT SHOWN.



FEBRUARY 15, 2012
TOPOGRAPHIC SURVEY MADE IN ACCORDANCE WITH THE LOUISIANA STANDARDS OF PRACTICE FOR BOUNDARY SURVEYS FOR A CLASS C SURVEY, MADE AT THE REQUEST OF EVANS-GRAVES ENGINEERS INC.

DUFRENE SURVEYING & ENGINEERING INC.
1824 MANHATTAN BOULEVARD, HARVEY, LA 70056
504-368-8390 PH.
504-368-8394 FAX
duf@dufene.com

