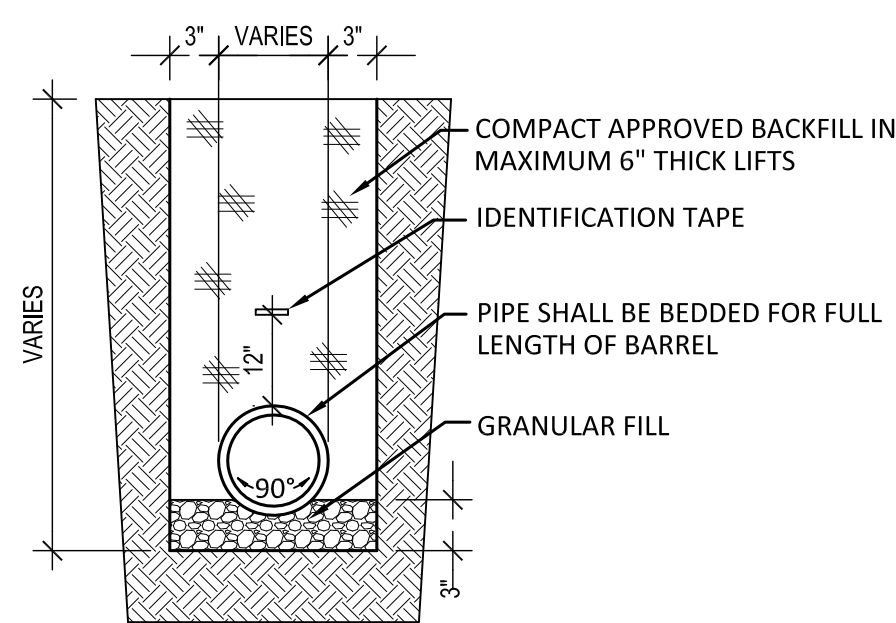
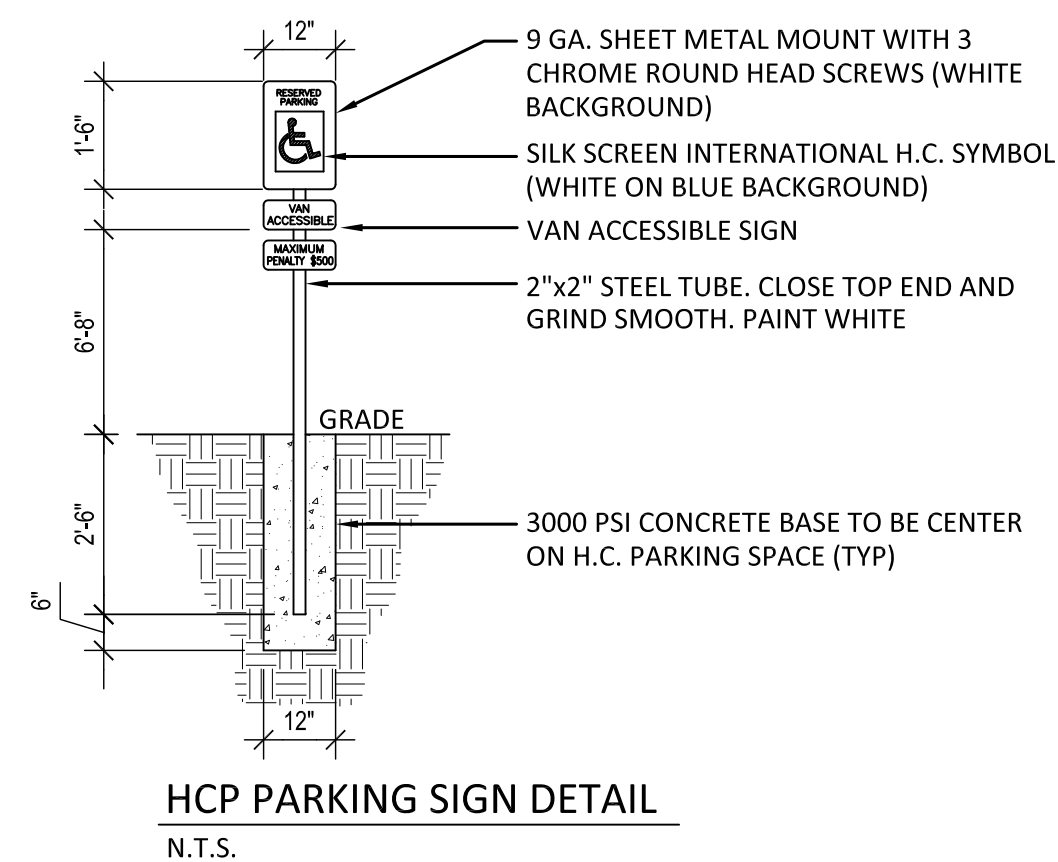


STORMWATER INLET DETAIL
N.T.S.

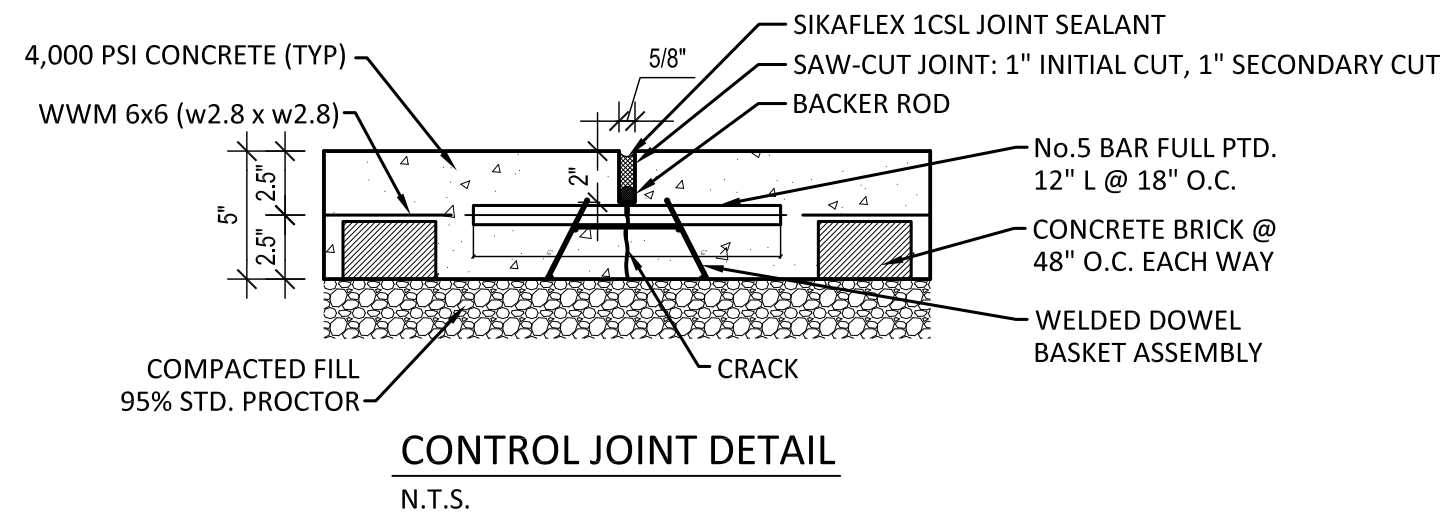
- STORMWATER SYSTEM NOTES:**
- 1) DRAIN PIPE AND FITTINGS SHALL BE SMOOTH INTERIOR HDPE.
 - 2) ALL CASTINGS THROUGHOUT PROJECT AREA SHALL BE ADA COMPLIANT AND BICYCLE SAFE. NO DOME OR BEEHIVE SHAPED CASTING SHALL BE USED.
 - 3) ALL STORMWATER SYSTEM MANHOLE CASTINGS SHALL BE LETTERED "STORM".
 - 4) BUILDING DOWNSPOWTS SHALL TIE INTO STORMWATER SYSTEM.



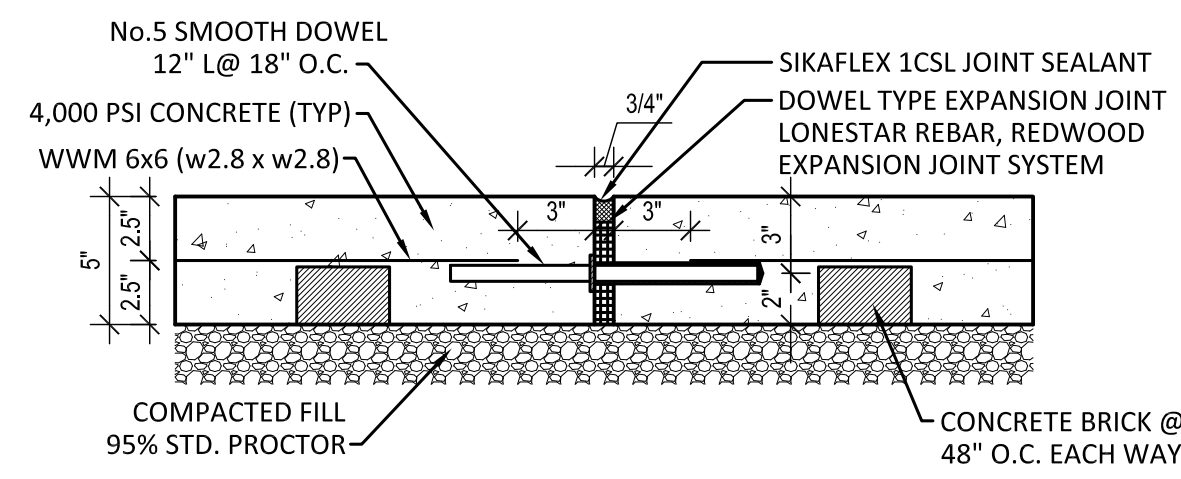
DRAIN PIPE BEDDING DETAIL
N.T.S.



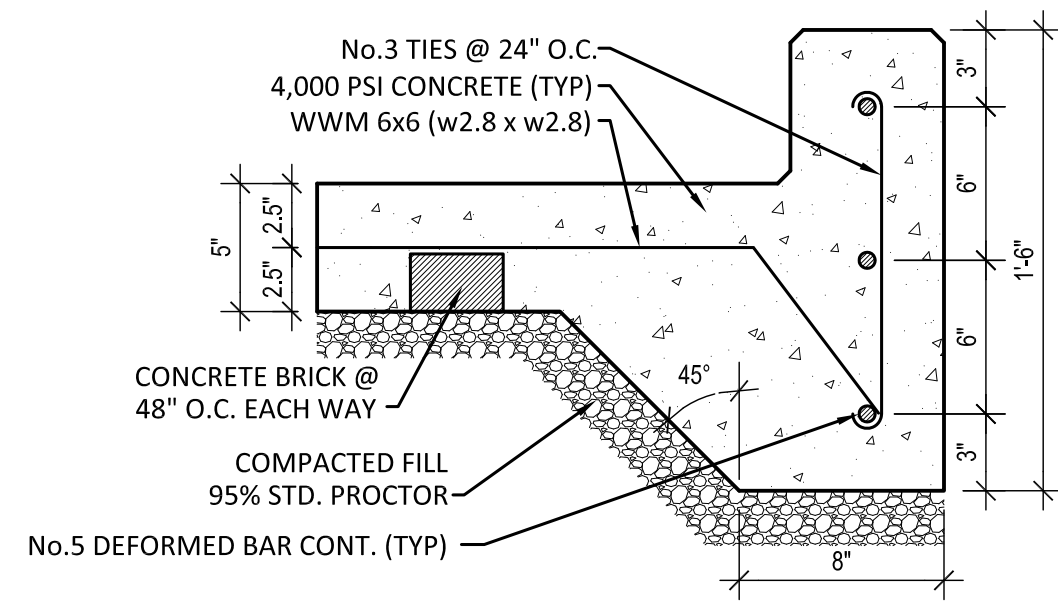
HCP PARKING SIGN DETAIL
N.T.S.



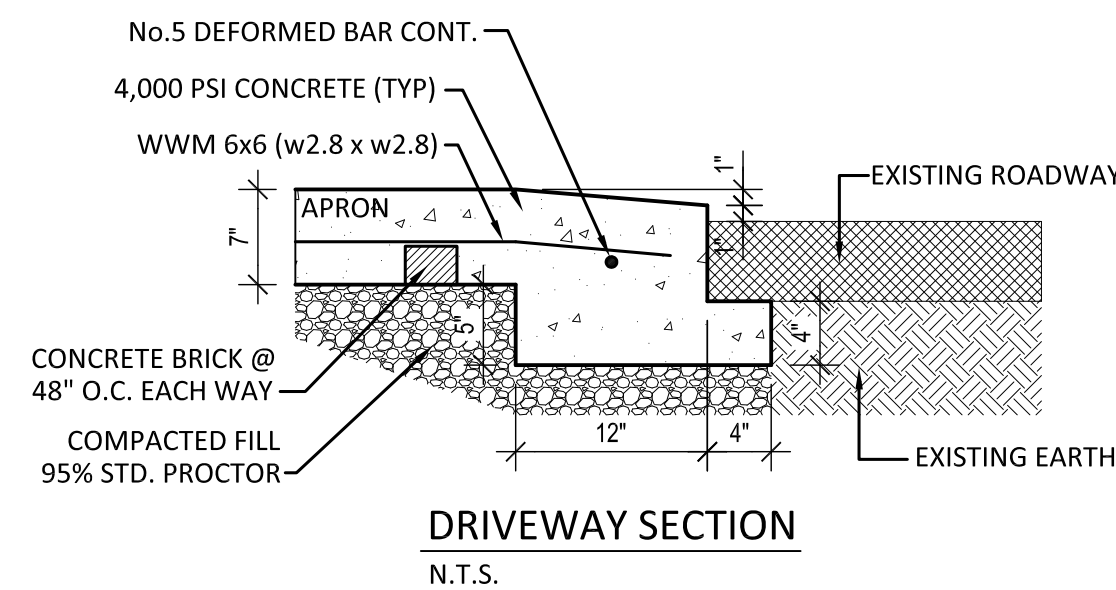
CONTROL JOINT DETAIL
N.T.S.



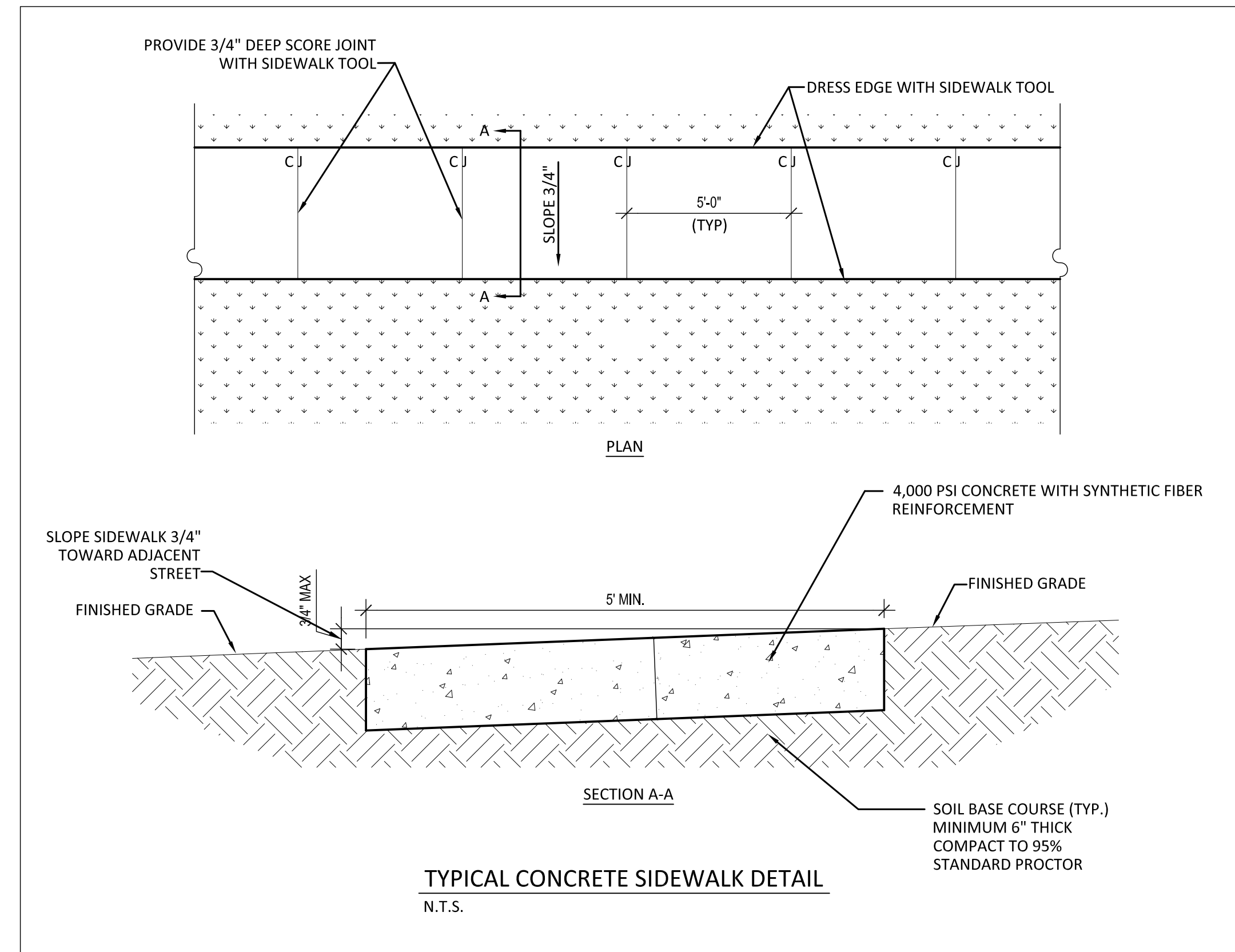
EXPANSION JOINT DETAIL
N.T.S.



TYPICAL CURB DETAIL
N.T.S.



DRIVEWAY SECTION
N.T.S.



TYPICAL CONCRETE SIDEWALK DETAIL
N.T.S.

PAVING NOTES:

- 1) ALL NEW CONCRETE SHALL HAVE A MINIMUM COMPRESSIVE STRENGTH OF 4,000 PSI AT 28 DAYS AND A MINIMUM THICKNESS OF 5". CONCRETE MIX SHALL BE IN ACCORDANCE WITH THE LATEST REVISION OF ASTM C-150 TYPE 1.
- 2) CONCRETE PAVING THICKNESS SHALL VARY AS FOLLOWS:
 - a) DUMPSTER PADS = 8"
 - b) APRONS = 7"
 - c) DRIVELANES = 6"
 - d) PARKING AREAS = 5"
- 3) ALL REINFORCING STEEL SHALL MEET ASTM-A615 (GRADE 60).
- 4) ALL REINFORCING STEEL SHALL BE SECURELY SUPPORTED TO PREVENT BOTH VERTICAL AND HORIZONTAL MOVEMENT DURING CONCRETE PLACEMENT. ALL CONTROL AND EXPANSION JOINTS SHALL BE LOCATED AND INSTALLED AS SHOWN ON THE PAVING PLAN AND IN ACCORDANCE WITH THE MANUFACTURER'S RECOMMENDATIONS.
- 5) ALL SUB GRADE FILL SHALL BE SELECT GRANULAR MATERIAL COMPACTED TO 95% STANDARD PROCTOR DENSITY IN A MAXIMUM OF 6" LIFTS.
- 6) CONTRACTOR SHALL CONTACT THEIR REGULATORY DEPARTMENT OF ENGINEERING PRIOR TO CONDUCTING ANY WORK.
- 7) ANY WORK WITHIN THE ROADWAY OR ADJACENT TO THE ROADWAY CAUSING AN INTERFERENCE TO VEHICULAR TRAFFIC REQUIRES PRIOR APPROVAL FROM THE CITY TRAFFIC ENGINEERING DIVISION, AND MUST CONFORM TO THE REQUIREMENTS SET FORTH BY THE UNIFORM MANUAL OF TRAFFIC CONTROL DEVICES OF THE STATE OF LOUISIANA. THE CONTRACTOR MUST FURNISH ALL NECESSARY TRAFFIC SIGNS AND/OR BARRICADES AND MAINTAIN THEM DURING CONSTRUCTION ACTIVITY.
- 8) RAMPS SHALL HAVE A MEDIUM BROOM FINISH, AND INCLUDE DETECTABLE WARNING SURFACE AT BOTTOM OF RAMP LEADING TO VEHICULAR AREAS.

