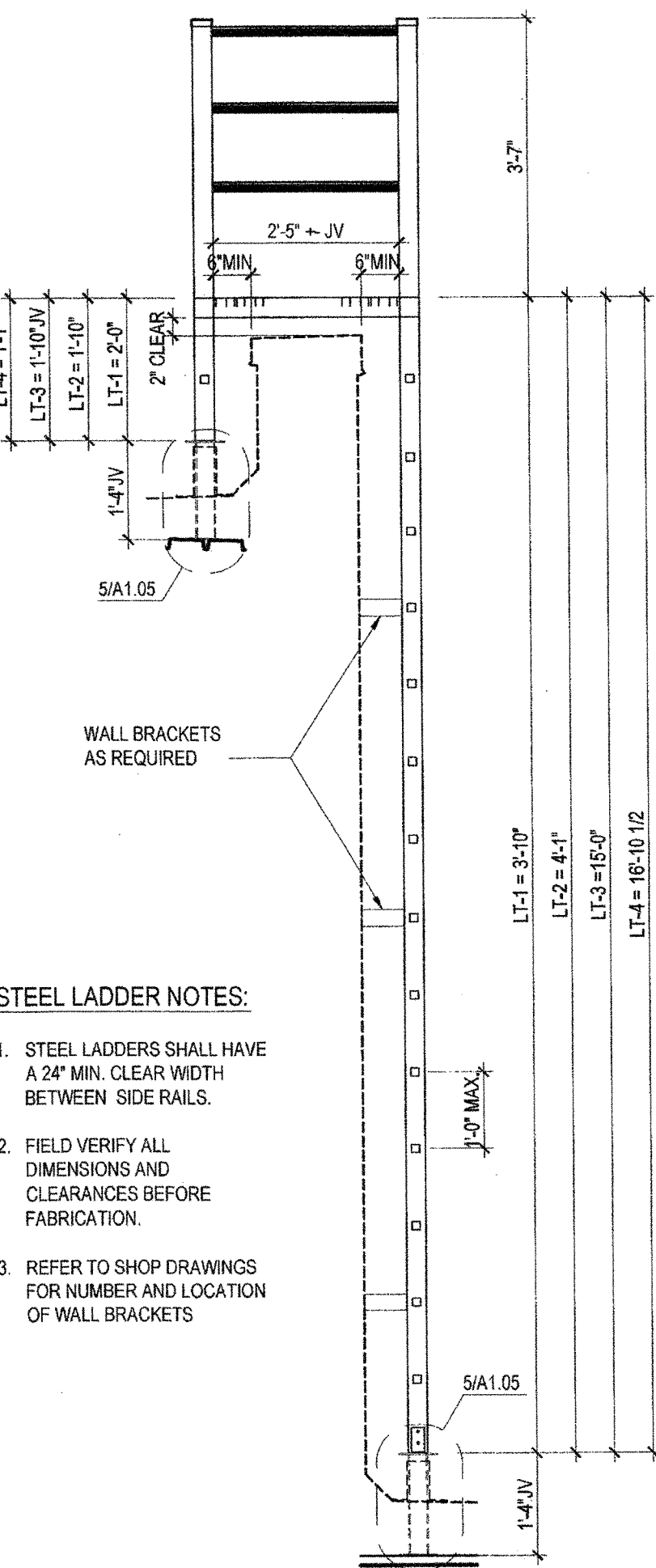


SPECIFIC ROOF NOTES:

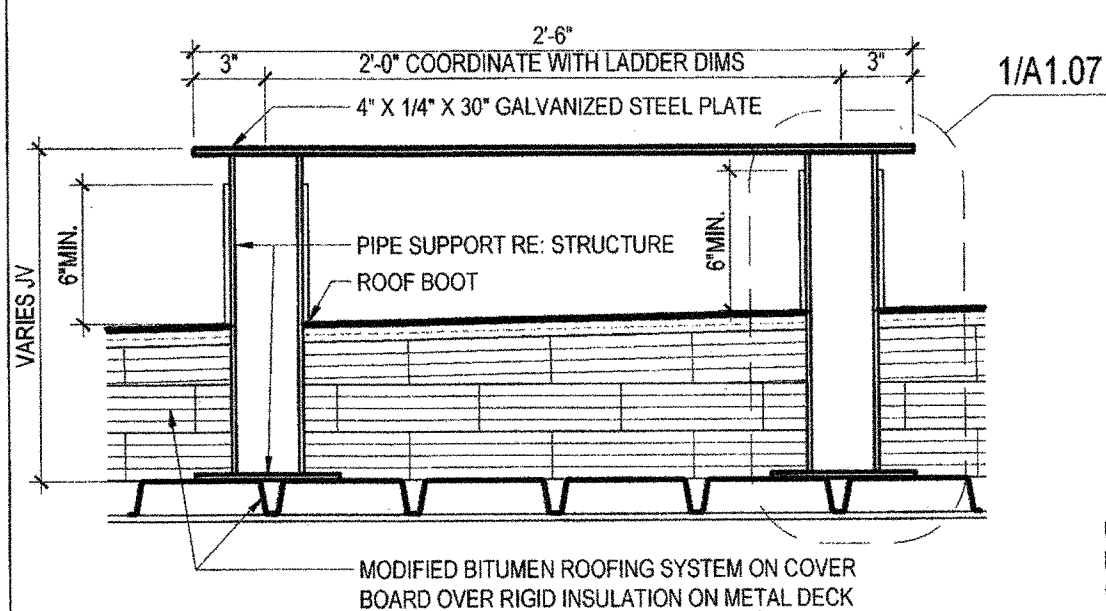
- 1 EXHAUST FAN ON CURB; SEE DETAIL 11/A1.07.
- 2 ROOF TOP MAKE-UP AIR UNIT ON CURB BY HVAC UNIT MANUFACTURER. SEE DETAIL 11/A1.07.
- 3 CONDENSING UNITS ON EQUIPMENT RAILS; SEE DETAIL 5/A1.05.
- 4 SOLATUBE; SEE DETAIL 10/A1.07.
- 5 SHEET METAL ENCLOSURE FOR PIPING ON CURB; SEE DETAIL 19/A1.07. AT EACH ENCLOSURE PROVIDE 6 PIPE/CONDUIT SUPPORTS FOR THE SUPPORT OF CONDUIT AND PIPING RUNNING BETWEEN CONDENSING UNITS AND ENCLOSURE AND FROM ELECTRICAL DISCONNECTS AND ENCLOSURE. SEE DETAIL 16/A1.07. THE FINAL LOCATIONS FOR ENCLOSURES, PIPING AND CONDUIT RUNS WILL BE DETERMINED IN THE FIELD.
- 6 EQUIPMENT RAILS AND UNISTRUT FOR ELECTRICAL DISCONNECTS; SEE DETAILS 4/A1.05. FOR EACH PAIR OF EQUIPMENT RAIL LOCATIONS, PROVIDE 6 PIPE/CONDUIT SUPPORTS FOR CONDUIT RUNNING FROM CONDENSING UNITS TO ELECTRICAL DISCONNECTS; SEE DETAIL 16/A1.07. THE FINAL LOCATIONS FOR ENCLOSURES, EQUIPMENT RAILS, AND PIPING AND CONDUIT RUNS WILL BE DETERMINED IN THE FIELD.
- 7 WALKWAYS.
- 8 GENERATOR ON STEEL STRUCTURE SUPPORTED ON PIPE COLUMNS; SEE DETAIL 1/A1.07 AT PIPE COLUMNS.
- 9 CHILLERS ON STEEL STRUCTURE SUPPORTED ON PIPE COLUMNS; SEE DETAIL 1/A1.07 AT PIPE COLUMNS.
- 10 KITCHEN EXHAUST HOOD. SEE DETAIL 18/A1.07.
- 11 CHILLER PIPING, CURBS BY CHILLER MANUFACTURE. SEE DETAIL 17/A1.07. FINAL LOCATION OF PIPING WILL BE DETERMINED IN FIELD. ELEVEN CURBS MINIMUM.
- 12 CHILLER PIPING THROUGH ROOF; SEE DETAIL 19/A1.07. FINAL LOCATION WILL BE DETERMINED IN FIELD.
- 13 EXHAUST FAN ON CURB BY EXHAUST FAN MANUFACTURER. SEE DETAIL 11/A1.07.



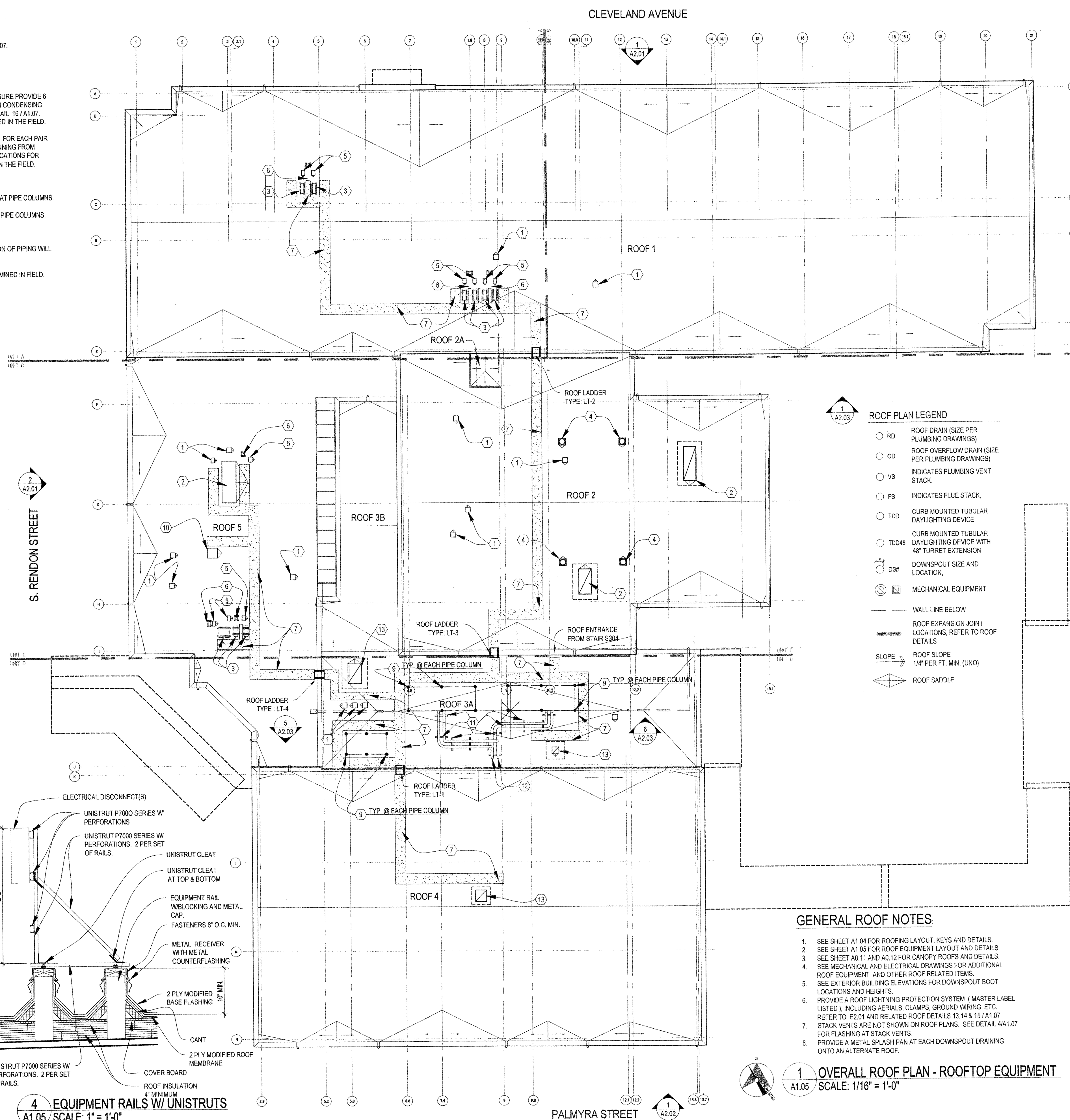
STEEL LADDER NOTES:

1. STEEL LADDERS SHALL HAVE A 24" MIN. CLEAR WIDTH BETWEEN SIDE RAILS.
2. FIELD VERIFY ALL DIMENSIONS AND CLEARANCES BEFORE FABRICATION.
3. REFER TO SHOP DRAWINGS FOR NUMBER AND LOCATION OF WALL BRACKETS

3 STEEL LADDER TYPES
A1.05 SCALE: 1/2" = 1'-0"



2 LADDER SUPPORTS
A1.05 SCALE: 1/2" = 1'-0"



ROOF PLAN LEGEND

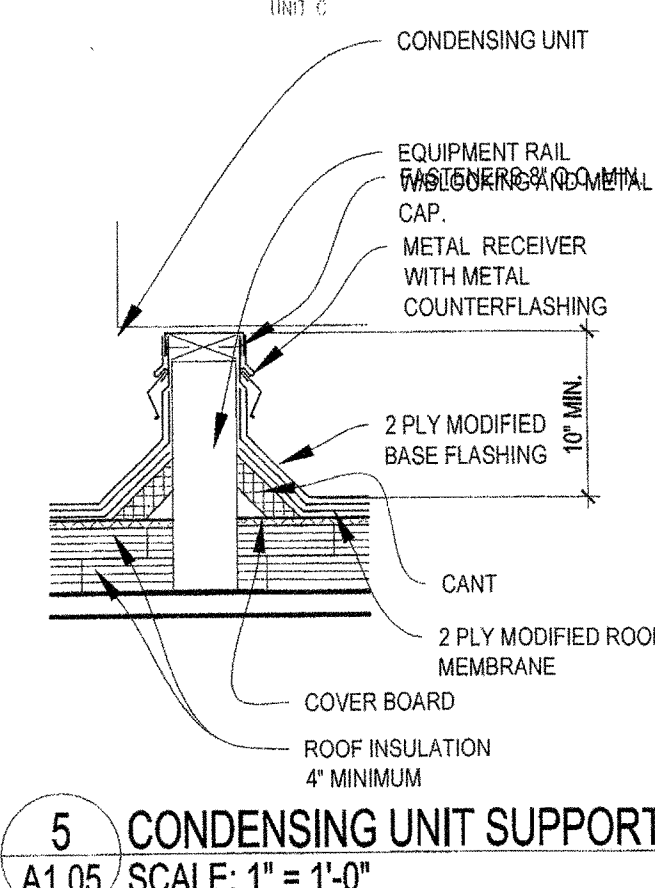
- RD ROOF DRAIN (SIZE PER PLUMBING DRAWINGS)
- OD ROOF OVERFLOW DRAIN (SIZE PER PLUMBING DRAWINGS)
- VS INDICATES PLUMBING VENT STACK
- FS INDICATES FLUE STACK
- TDD CURB MOUNTED TUBULAR DAYLIGHTING DEVICE
- TDD48 CURB MOUNTED TUBULAR DAYLIGHTING DEVICE WITH 48" TURRET EXTENSION
- D#S# DOWNSPOUT SIZE AND LOCATION
- MECHANICAL EQUIPMENT
- WALL LINE BELOW
- ROOF EXPANSION JOINT LOCATIONS, REFER TO ROOF DETAILS
- SLOPE ROOF SLOPE 1/4" PER FT. MIN. (UNO)
- ◇ ROOF SADDLE

GENERAL ROOF NOTES

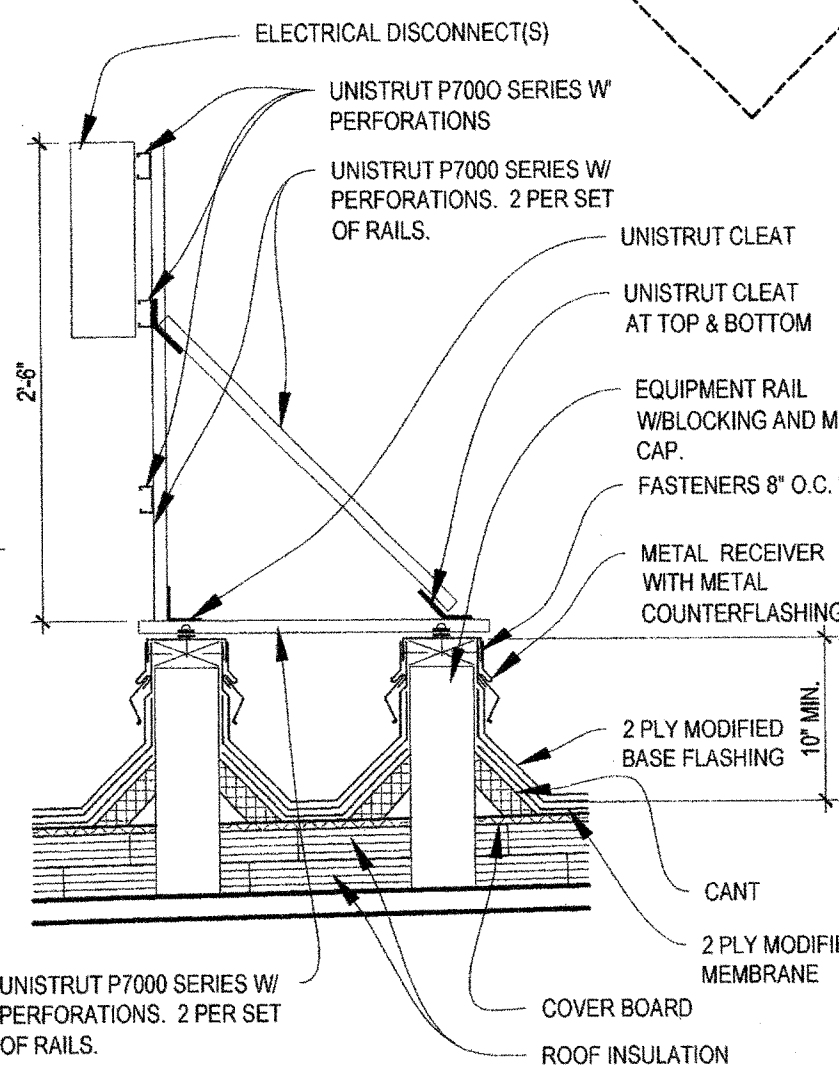
1. SEE SHEET A1.04 FOR ROOFING LAYOUT, KEYS AND DETAILS.
2. SEE SHEET A1.05 FOR ROOF EQUIPMENT LAYOUT AND DETAILS.
3. SEE SHEET A1.11 AND A1.12 FOR CANOPY ROOFS AND DETAILS.
4. SEE MECHANICAL AND ELECTRICAL DRAWINGS FOR ADDITIONAL ROOF EQUIPMENT AND OTHER ROOF RELATED ITEMS.
5. SEE EXTERIOR BUILDING ELEVATIONS FOR DOWNSPOUT BOOT LOCATIONS AND HEIGHTS.
6. PROVIDE A ROOF LIGHTNING PROTECTION SYSTEM (MASTER LABEL LISTED), INCLUDING AERIALS, CLAMPS, GROUND WIRING, ETC. REFER TO E2.01 AND RELATED ROOF DETAILS 13, 14 & 15 / A1.07.
7. STACK VENTS ARE NOT SHOWN ON ROOF PLANS. SEE DETAIL 4/A1.07 FOR FLASHING AT STACK VENTS.
8. PROVIDE A METAL SPLASH PAN AT EACH DOWNSPOUT DRAINING ONTO AN ALTERNATE ROOF.

1 OVERALL ROOF PLAN - ROOFTOP EQUIPMENT
A1.05 SCALE: 1/16" = 1'-0"

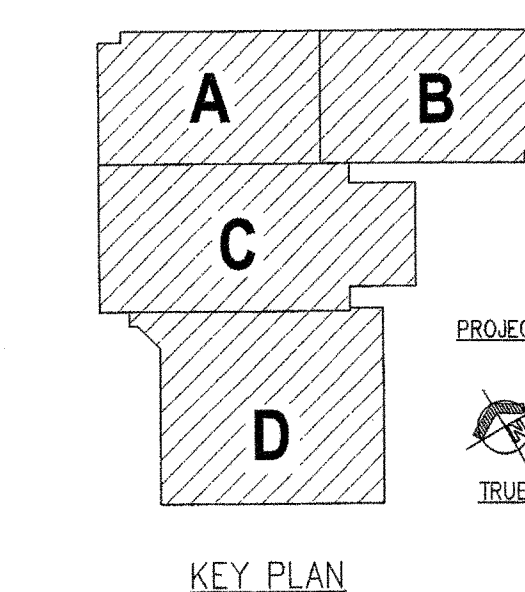
- NOTES - ROOFTOP EQUIPMENT:**
1. ON THE LEADING SIDE OF EACH CURB PROVIDE A CRICKET TO DIVERT WATER AROUND THE CURB.
 2. CURBS SHALL BE OF SUFFICIENT HEIGHT TO PROVIDE 10 INCH MINIMUM CLEARANCE BETWEEN THE TOP OF THE CAP SHEET AND THE TOP OF THE CURB AFTER THE INSTALLATION OF ALL BOARD INSULATION, COVER BOARDS, CRICKETS, ETC.



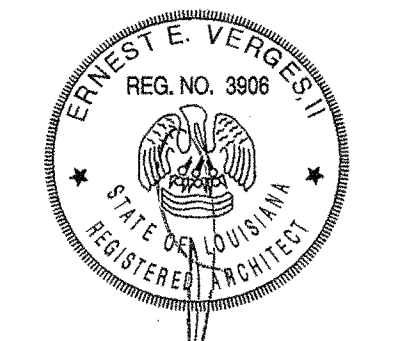
5 CONDENSING UNIT SUPPORT
A1.05 SCALE: 1" = 1'-0"



4 EQUIPMENT RAILS W/ UNISTRUTS
A1.05 SCALE: 1" = 1'-0"



KEY PLAN



**NEW 3 SECTION ELEMENTARY SCHOOL
AT FISK-HOWARD SCHOOL
RECOVERY SCHOOL DISTRICT**

211 S. LOPEZ STREET NEW ORLEANS, LOUISIANA 70119

DATE ISSUED: 7 DECEMBER, 2012

REVISED:

REVISED:

REVISED:

REVISED:

DRAWN BY: CMB

CHECKED BY: DGR, JFM

PHASE:

BID DOCUMENTS

11085

**TITLE:
ROOFTOP EQUIPMENT
PLAN AND DETAILS**

SHEET:
A1.05