



**NEW 3 SECTION ELEMENTARY SCHOOL  
AT FISK-HOWARD SCHOOL  
RECOVERY SCHOOL DISTRICT**

211 S. LOPEZ STREET NEW ORLEANS, LOUISIANA 70119

DATE ISSUED: 7 DECEMBER, 2012

REVISED:  
REVISED:  
REVISED:  
REVISED:  
DRAWN BY: MKS  
CHECKED BY:  
PHASE:

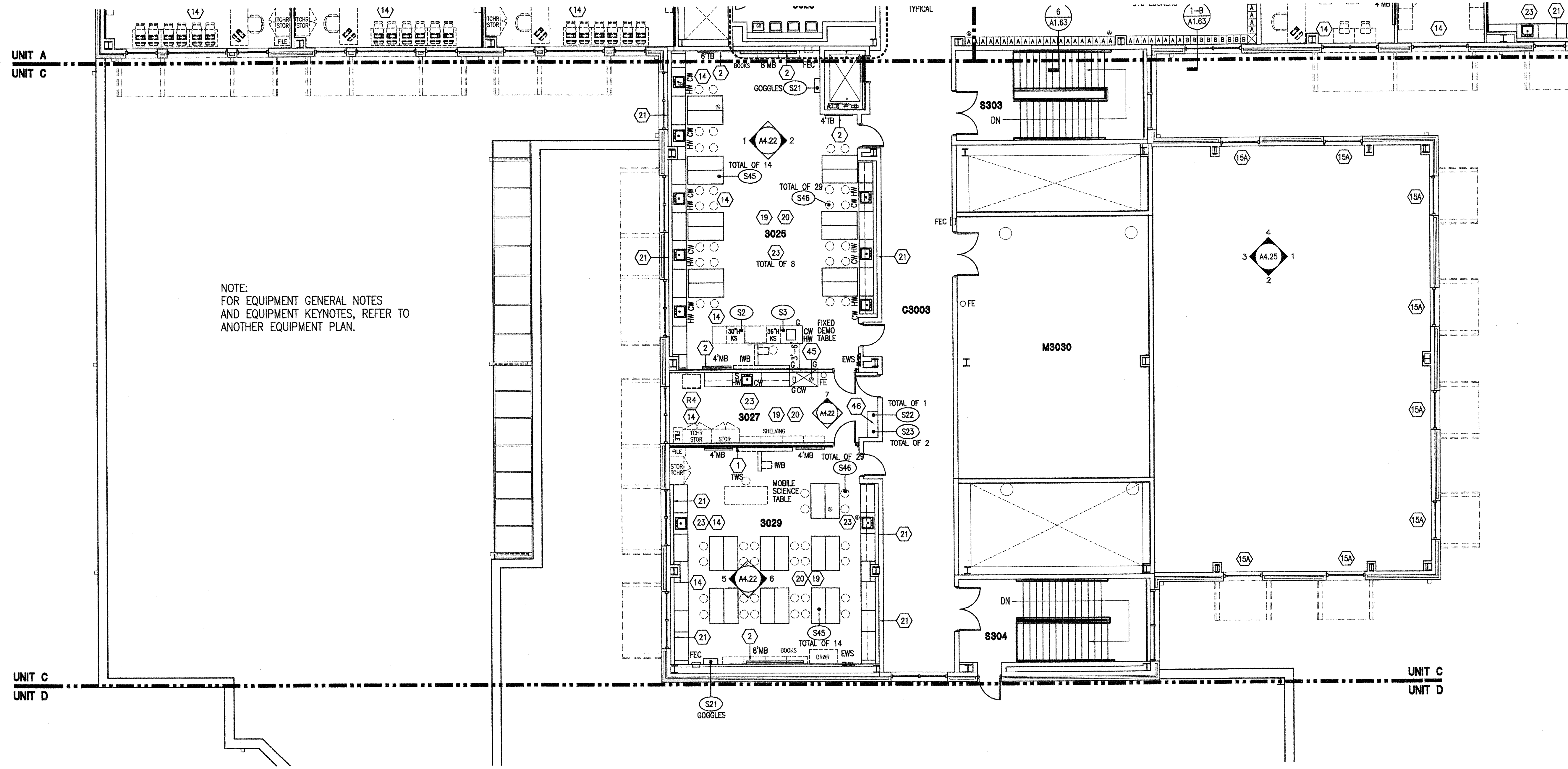
BID DOCUMENTS

11085

TITLE:  
**3RD FLOOR UNIT C  
EQUIPMENT PLAN**

SHEET:

**A1.61**



NOTE:  
FOR EQUIPMENT GENERAL NOTES  
AND EQUIPMENT KEYNOTES, REFER TO  
ANOTHER EQUIPMENT PLAN.

**SCIENCE LEGEND**

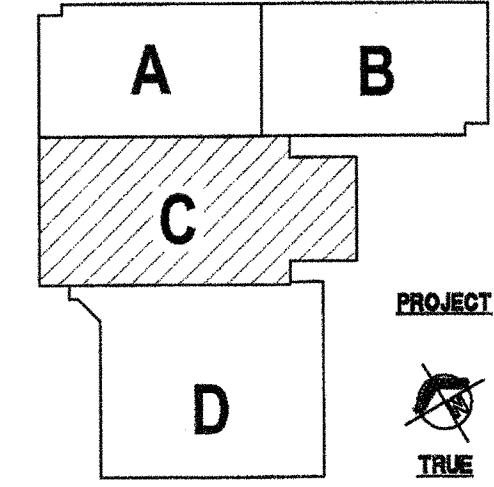
- CS CUP SINK
- CW COLD WATER
- EWS EYE WASH & SHOWER
- FE FIRE EXTINGUISHER
- FH FUME HOOD
- G SINGLE GAS TURRET
- HW HOT WATER
- IWB INTERACTIVE WHITE BOARD
- KS KNEESPACE
- MB MARKER BOARD
- PB PEGBOARD
- REF REFRIGERATOR
- SOV SHUT OFF VALVES
- S SPRAYER (HAND HELD)
- TB TACK BOARD
- TWS TACKABLE WALL SURFACE
- TD TOWEL DISPENSER

**RESIDENTIAL EQUIPMENT**

- REFER TO RESIDENTIAL EQUIPMENT SCHEDULE FOR MORE INFORMATION.
- R1 STACKABLE WASHER AND DRYER
  - R2 RESIDENTIAL WASHER
  - R3 RESIDENTIAL DRYER
  - R4 REFRIGERATOR WITH ICE MAKER
  - R5 MICROWAVE
  - R6 REFRIGERATOR WITH NO ICE MAKER
  - R7 COMMERCIAL ICE MAKER

**ROOM LEGEND**

ROOM NO.	ROOM NAME	UNIT C 3RD FLOOR	
		AREA	CLNG HT
3025	SCIENCE LAB	1206 SF	10'-0"
3027	SCIENCE PREP	292 SF	10'-0"
3029	SCIENCE CLASSROOM	894 SF	10'-0"
C3003	CORRIDOR	933 SF	10'-0"
M3030	MECHANICAL	999 SF	EXPOSED
S303	STAIR	342 SF	10'-0"
S304	STAIR	315 SF	10'-0"



KEY PLAN

**VERIFICATION NOTE**

CONTRACTOR SHALL VERIFY ALL DIMENSIONS AND CLEARANCES AND ALL EXISTING FIELD CONDITIONS BEFORE STARTING CONSTRUCTION. COMMENCEMENT OF WORK CONSTITUTES ACCEPTANCE OF CONDITIONS. SHOULD DIFFERENT CONDITIONS BE ENCOUNTERED, CONTACT THE ARCHITECT BEFORE PROCEEDING WITH WORK.

**1 UNIT C - EQUIPMENT PLAN - 3RD FLOOR**  
A1.61 SCALE: 1/8" = 1'-0"