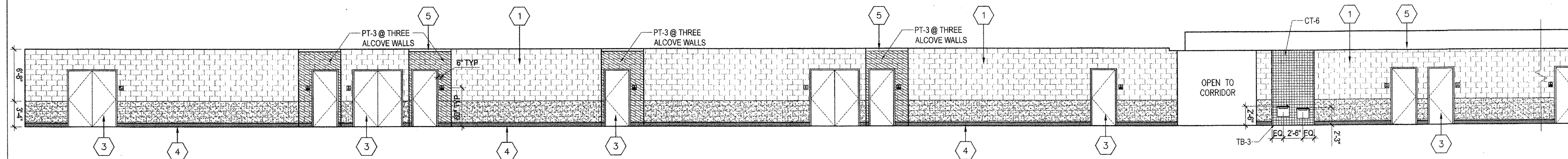
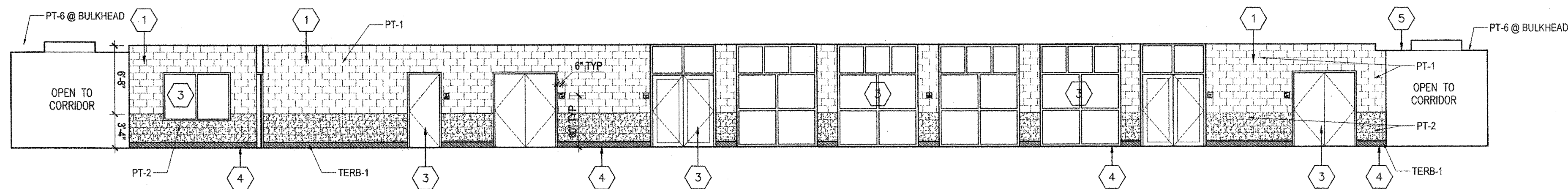


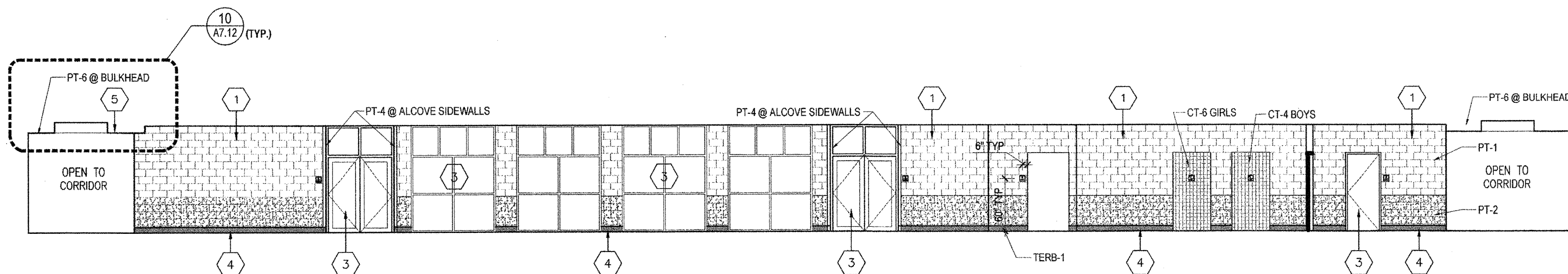
**1** CORRIDORS C1001/ C1003- NORTH ELEVATION  
A4.23 SCALE: 1/8" = 1'-0"



**2** CORRIDORS C1001/ C1003- SOUTH ELEVATION  
A4.23 SCALE: 1/8" = 1'-0"



**3** CORRIDORS C1002/ C1003- EAST ELEVATION  
A4.23 SCALE: 1/8" = 1'-0"



**4** CORRIDORS C1002/ C1003- WEST ELEVATION  
A4.23 SCALE: 1/8" = 1'-0"

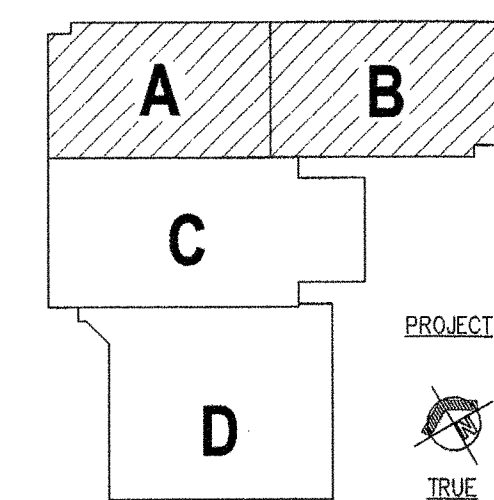
**GENERAL NOTES**

1. ALL WALLS OF CLASSROOM ALCOVES SHALL BE PAINTED SPECIFIED COLOR (SEE A6.00, A6.01, A6.02).
2. INSTALL TERRAZZO BASE TERB-1.2 FIRST FLOOR CORRIDORS. QUARRY TILE BASE QT-1 SHALL BE INSTALLED @ 2ND & 3RD FLOOR CORRIDORS.
3. REFER TO SHEETS A6.00 & A6.08 FOR LOCKER COLOR DESIGNATIONS.
4. UNLESS OTHERWISE NOTED, LOCKERS ARE TO BE LOCKER COLOR 1 AS LOCKER PER SPECIFICATIONS.
5. RETURN TERRAZZO BASE AND ALL WALL BASE INTO DOOR OPENINGS / FRAMES.
6. EXPOSED DUCTWORK IS TO BE PAINTED.
7. CMU BLOCK AND TILE PATTERNS ARE REPRESENTATIVE OF MATERIAL ONLY, NOT FOR USE OF COURSING LAYOUT.

**INTERIOR ELEVATION NOTES**

(ALL NOTES MAY NOT BE USED ON THIS DRAWING)

1. CONCRETE MASONRY UNIT (CMU), PAINTED.
2. GYPSUM WALLBOARD (GWB) PAINTED.
3. REFER TO OPENING SCHEDULE.
4. WALL BASE, REFER TO ROOM FINISH SCHEDULE.
5. GYPSUM WALLBOARD BULKHEAD (GWBH), PAINTED.
6. BLEACHERS, REFER TO EQUIPMENT PLANS.
7. BASKETBALL BACKSTOP, REFER TO EQUIPMENT PLANS.
8. SCOREBOARD, REFER TO EQUIPMENT PLANS AND ELECTRICAL PLANS.
9. WALL PADDING, REFER TO EQUIPMENT PLANS.
10. STEEL DECK, PAINTED.
11. STEEL JOISTS, PAINTED.
12. STEEL CHANNEL TO CAP CMU, PAINTED. REFER TO WALL SECTIONS.
13. GYM DIVIDER CURTAIN, REFER TO EQUIPMENT PLANS.
14. EDUCATIONAL CASEWORK, REFER TO EQUIPMENT PLANS.
15. MARKERBOARD, REFER TO EQUIPMENT PLANS.
16. TACKBOARD, REFER TO EQUIPMENT PLANS.
17. INTERACTIVE WHITE BOARD, REFER TO TECHNOLOGY DRAWINGS.
18. TACKABLE WALL SURFACE FROM CORNER TO CORNER AND TOP OF RESILIENT BASE TO CEILING. REFER TO DETAIL 16-A1.62.
19. ELECTRIC WATER COOLER.
20. COLLIM WRAP, REFER TO PLAN DETAILS.
21. STAGE OPENING / CURTAIN.
22. DASHED LINE INDICATES ACOUSTICAL CURTAIN IN CLOSED POSITION.
23. SUSPENDED CEILING LEVEL.
24. PAINTED EXPOSED STRUCTURE AT OPENING BETWEEN SUSPENDED CEILING.
25. LIBRARY SHELVING, REFER TO EQUIPMENT PLANS.
26. OPERABLE WALL.
27. ABUSE RESISTANT ACOUSTICAL WALL TREATMENT (AR-AWT), PAINTED.
28. ACOUSTICAL WALL TREATMENT (AWT).
29. WALL PADDING AT STAGE, SEE DETAIL 2-A1.64.
30. 12"H TACK STRIP.
31. TWS (TACKABLE WALL SURFACE) TO BE 4'-0"W PANELS AND RUN VERTICALLY.
32. MECHANICAL DUCTWORK, PAINTED.
33. MECHANICAL LOUVER, PAINT TO MATCH ADJACENT WALL COLOR.



KEY PLAN



**NEW 3 SECTION ELEMENTARY SCHOOL  
AT FISK-HOWARD SCHOOL  
RECOVERY SCHOOL DISTRICT**

211 S. LOPEZ STREET NEW ORLEANS, LOUISIANA 70119

DATE ISSUED: 7 DECEMBER, 2012

REVISED:

REVISED:

REVISED:

REVISED:

DRAWN BY: SMB, HML

CHECKED BY: DGR, JFM

PHASE:

BID  
DOCUMENTS

11085

TITLE:  
INTERIOR ELEVATIONS

SHEET:

A4.23