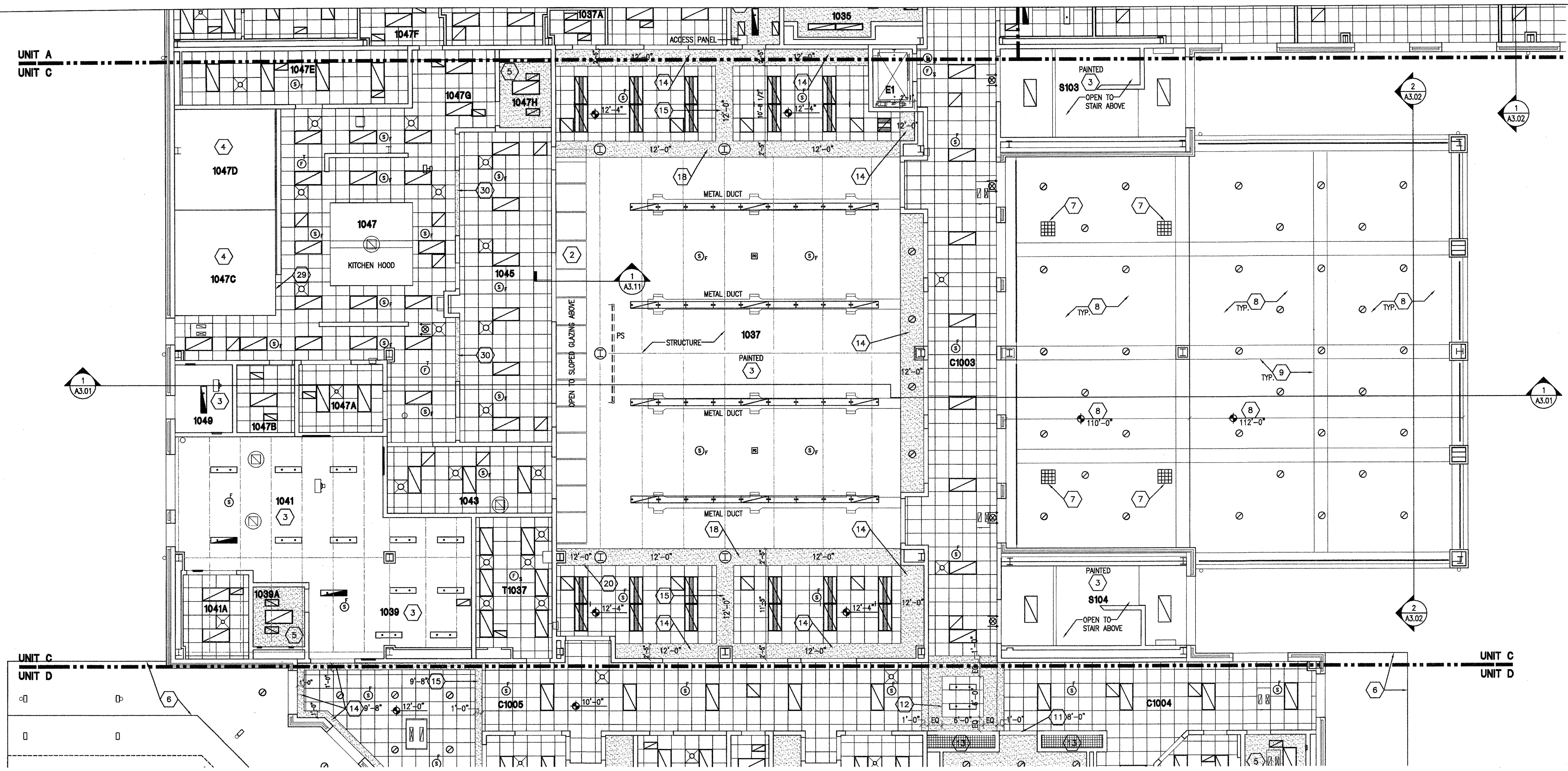




**NEW 3 SECTION ELEMENTARY SCHOOL  
AT FISK-HOWARD SCHOOL  
RECOVERY SCHOOL DISTRICT**  
211 S. SLOPEZ STREET  
NEW ORLEANS, LOUISIANA 70119



**REFLECTED CEILING PLAN LEGEND**

- 2x4 OR 2x2 ACOUSTICAL CEILING - REFER TO ROOM FINISH SCHEDULE FOR TYPE
- LIGHT FIXTURE - REFER TO ELECTRICAL DRAWINGS
- LIGHT FIXTURE - REFER TO ELECTRICAL DRAWINGS
- LIGHT FIXTURE - REFER TO ELECTRICAL DRAWINGS
- DIFFUSER - REFER TO MECHANICAL DRAWINGS
- DIFFUSER - REFER TO MECHANICAL DRAWINGS
- RETURN AIR GRILL - REFER TO MECHANICAL DRAWINGS
- SPEAKER - REFER TO ELECTRICAL DRAWINGS
- SMOKE DETECTOR - REFER TO ELECTRICAL DRAWINGS
- HEAT DETECTOR - REFER TO ELECTRICAL DRAWINGS
- CEILING MOUNTED EXIT LIGHT
- CEILING MOUNTED PROJECTOR - COORDINATE INSTALLATION OF VIDEO PROJECTOR WITH TECHNOLOGY CONTRACTOR
- CEILING MOUNTED WIRELESS ACCESS POINT
- CEILING MOUNTED INTERCOMMUNICATIONS LOUDSPEAKER
- CEILING MOUNTED SPECIALTY SOUND REINFORCEMENT SPEAKER
- CEILING MOUNTED MICROPHONE
- CEILING MOUNTED VIDEO SURVEILLANCE CAMERA
- CEILING MOUNTED MOTION DETECTOR
- CEILING MOUNTED DOOR ACCESS CONTROLLER JUNCTION BOX
- CABINET HEATER - REFER TO MECHANICAL DRAWINGS
- INDICATES GWB BULKHEAD/CEILING
- INDICATES PLASTER CEILING/SOFFT
- INDICATES PROJECTION SCREEN - REFER TO EQUIPMENT DRAWINGS
- 2" SOFFT VENT (CONT). TERMINATE 8" FROM FACE OF WALL CONSTRUCTION

**GENERAL NOTES**

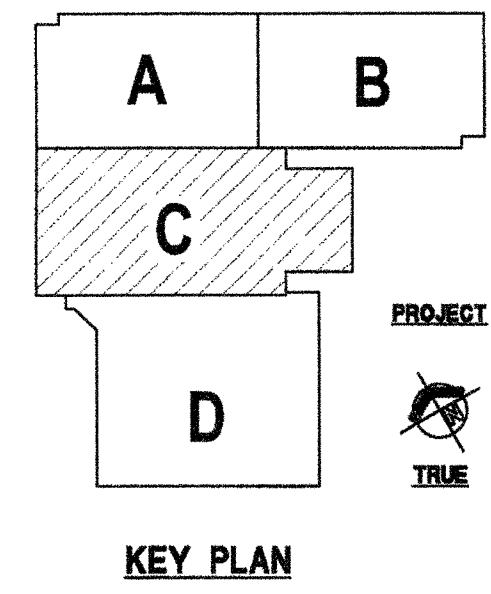
- A. THE ARCHITECTURAL REFLECTED CEILING PLANS GOVERN THE LAYOUT OF ALL CEILING ELEMENTS/PENETRATIONS.
- B. REFER TO MASTER PLANS/CODE PLANS FOR THE LOCATION OF RATED WALL CONSTRUCTION AND WALLS THAT EXTEND TO ROOF DECK OR FLOOR STRUCTURE ABOVE.
- C. REFER TO ROOM FINISH SCHEDULE FOR SPECIFIC CEILING TYPES.
- D. LINE INDICATES CANOPY AND STRUCTURE REFER TO SITE PLAN CANOPY DRAWINGS.
- E. TUBULAR DAYLIGHTING DIFFUSER - REFER TO ROOF PLAN AND PROJECT MANUAL.
- F. SUSPENDED PLASTER SOFFT - 3/4" PORTLAND CEMENT STUCCO ON METAL LATH ON RUNNERS SUSPENDED FROM STRUCTURE ABOVE. HEIGHT AS INDICATED.
- G. CONTROL JOINT AT SUSPENDED PLASTER SOFFT REFER TO PROJECT MANUAL.
- H. CONTINUOUS EXPANSION JOINT AT CEILING - SEE DETAIL 2-A7.13.
- I. CMU LINTEL (PAINT) BOTTOM OF LINTEL HEIGHT AS INDICATED - REFER TO STRUCTURAL DRAWINGS.
- J. LUMINOUS CEILING SYSTEM AND GWB BULKHEAD REFER TO PROJECT MANUAL AND DETAIL 10-A7.12.
- K. ACRYLIC EGGCRATE CEILING AT DISPLAY CASE REFER TO DETAIL 7-A1.64.

**REFLECTED PLAN KEY NOTES**

1. REFER TO SECOND FLOOR FOR CEILING.
2. SLOPED GLAZING SKYLIGHT - REFER TO ROOF PLAN AND WALL SECTIONS.
3. EXPOSED STRUCTURE IN THIS ROOM.
4. NO NEW CEILING FINISH REQUIRED AT FREEZER/COOLER AREA.
5. 5/8" GWB CEILING ON 3 5/8" STEEL STUDS AT 16" O.C. SUSPEND FROM STRUCTURE AS REQUIRED.
6. LINE INDICATES CANOPY AND STRUCTURE REFER TO SITE PLAN CANOPY DRAWINGS.
7. TUBULAR DAYLIGHTING DIFFUSER - REFER TO ROOF PLAN AND PROJECT MANUAL.
8. SUSPENDED PLASTER SOFFT - 3/4" PORTLAND CEMENT STUCCO ON METAL LATH ON RUNNERS SUSPENDED FROM STRUCTURE ABOVE. HEIGHT AS INDICATED.
9. CONTROL JOINT AT SUSPENDED PLASTER SOFFT REFER TO PROJECT MANUAL.
10. CONTINUOUS EXPANSION JOINT AT CEILING - SEE DETAIL 2-A7.13.
11. CMU LINTEL (PAINT) BOTTOM OF LINTEL HEIGHT AS INDICATED - REFER TO STRUCTURAL DRAWINGS.
12. LUMINOUS CEILING SYSTEM AND GWB BULKHEAD REFER TO PROJECT MANUAL AND DETAIL 10-A7.12.
13. ACRYLIC EGGCRATE CEILING AT DISPLAY CASE REFER TO DETAIL 7-A1.64.
14. GWB BULKHEAD - REFER TO DETAIL 2-A7.12.
15. GWB BULKHEAD - REFER TO DETAIL 3-A7.12.
16. GWB BULKHEAD - REFER TO DETAIL 4-A7.12.
17. GWB BULKHEAD - REFER TO DETAIL 5-A7.12.
18. GWB BULKHEAD - REFER TO DETAIL 6-A7.12.
19. GWB BULKHEAD - REFER TO DETAIL 7-A7.12.
20. GWB BULKHEAD - REFER TO DETAIL 8-A7.12.
21. GWB BULKHEAD - REFER TO DETAIL 9-A7.12.
22. GWB BULKHEAD - REFER TO DETAIL 11-A7.12.
23. GWB BULKHEAD - REFER TO DETAIL 12-A7.12.
24. GWB BULKHEAD - REFER TO DETAIL 13-A7.12.
25. FORWARD FOLDING BASKETBALL BACKSTOP REFER TO EQUIPMENT DRAWINGS.
26. GYMNASIUM DIVIDER CURTAIN - REFER TO EQUIPMENT DRAWINGS.
27. OPERABLE PARTITION WALL - REFER TO PROJECT MANUAL AND DETAIL 1-A7.13.
28. SUSPENDED ACOUSTICAL CEILING. HEIGHT AS INDICATED - PROVIDE 8" SUSPENSION (PERIMETER) TRIM AROUND EACH SUSPENDED GROUPING OF PANELS. PROVIDE 6" ACOUSTICAL INSULATION LAYING ON TOP OF PANELS AND EXTENDING TO PERIMETER TRIM. COORDINATE CEILING TERMINATION WITH COOLER/FREEZER CONTR.
29. GWB BULKHEAD - REFER TO DETAIL 3-A7.13.
30. PROVIDE 1 HOUR RATED CEILING IN THIS ROOM. (2) LAYERS OF 5/8" TYPE "X" GWB CEILING ON 6" STEEL STUDS AT 16" O.C. AND SECURED TO WALLS AS REQUIRED.
- 31.

**ROOM LEGEND**

ROOM NO.	ROOM NAME	AREA	CLNG HT
1037	STUDENT DINING/COMMONS	4541 SF	VARIES
1039	MAINTENANCE & REPAIR AREA	467 SF	EXPOSED
1039A	RESTROOM	66 SF	10'-0"
1041	RECEIVING	517 SF	EXPOSED
1041A	OFF. A	118 SF	10'-0"
1043	DISHWASHING	231 SF	10'-0"
1045	SERVING	607 SF	10'-0"
1047	KITCHEN	1213 SF	10'-0"
1047A	KIT. OFF.	121 SF	10'-0"
1047B	LAUNDRY	83 SF	10'-0"
1047C	COOLER	225 SF	-
1047D	FREEZER	215 SF	-
1047E	DRY STORAGE	252 SF	10'-0"
1047G	LOCKERS	65 SF	10'-0"
1047H	RESTROOM	70 SF	10'-0"
1049	SPRINKLER	83 SF	EXPOSED
C1003	CORRIDOR	1175 SF	10'-0"
E1	ELEVATOR	48 SF	-
S103	STAIR	342 SF	VARIES
S104	STAIR	315 SF	VARIES
T1037	TECHNOLOGY	219 SF	10'-0"



**1 UNIT C - FIRST FLOOR REFLECTED CEILING PLAN**  
A7.03 SCALE: 1/8" = 1'-0"

**VERIFICATION NOTE**  
CONTRACTOR SHALL VERIFY ALL DIMENSIONS AND CLEARANCES AND ALL EXISTING FIELD CONDITIONS BEFORE STARTING CONSTRUCTION. COMMENCEMENT OF WORK CONSTITUTES ACCEPTANCE OF CONDITIONS.  
SHOULD DIFFERENT CONDITIONS BE ENCOUNTERED, CONTACT THE ARCHITECT BEFORE PROCEEDING WITH WORK.

DATE ISSUED: 7 DECEMBER, 2012  
REVISED:  
REVISED:  
REVISED:  
DRAWN BY: MKS  
CHECKED BY:  
PHASE:  
**BID DOCUMENTS**  
**11085**  
TITLE:  
**UNIT C FIRST FLOOR REFLECTED CEILING**  
SHEET:  
**A7.03**