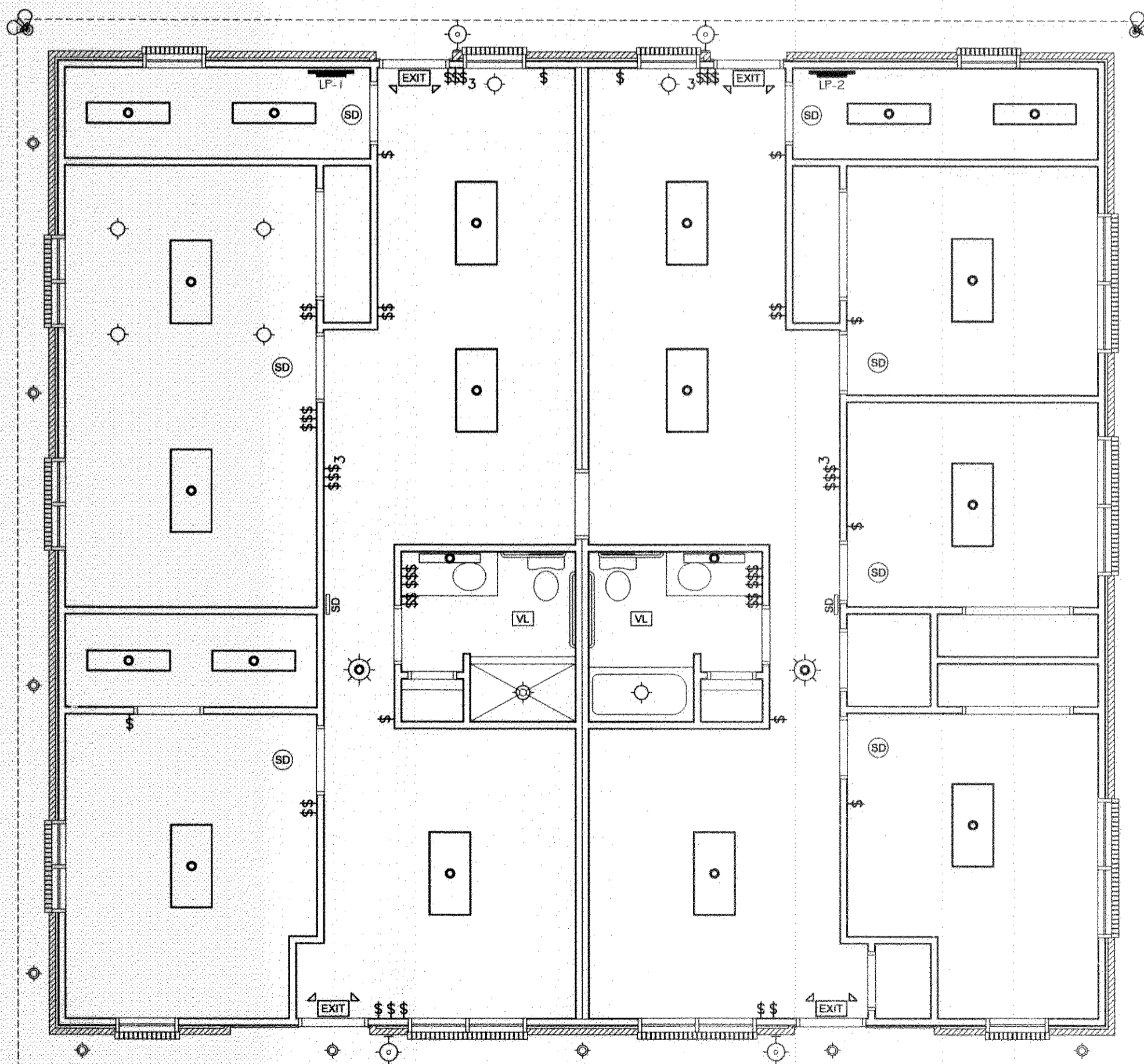


EXISTING ELECTRICAL POWER PLAN
SCALE: 3/16" = 1'



EXISTING ELECTRICAL LIGHTING PLAN
SCALE: 3/16" = 1'

PANEL: LP1 (EXISTING)
LOCATION: REAR WALL SUITE A
FEEDER SOURCE: EXISTING

VOLTAGE: 208/120V, 225A 3Ø, 4W
ENCLOSURE: SURFACE MOUNTED W/EQUIPMENT GND BAR

CKT. NO.	THHN WIRE SIZE	LOAD DESCRIPTION	BREAKER	LOAD (VA)	LOAD			LOAD DESCRIPTION	THHN WIRE SIZE	CKT. NO.
					AMP	POLE	VA			
1	-	WASHER	- 1 -	-	-	-	-	-	2	
3	-	LIGHTS & OUTLETS MEDIA ROOM	- 1 -	-	-	-	-	-	4	
5	-	LIGHTS KITCHEN & UTILITY ROOM	- 1 -	-	-	-	2 30	-	6	
7	-	HEATER/BLOWER UNIT 10 KW	- 2 -	-	-	-	-	-	8	
9	-	GFI SHOWER TUB-OUTDOOR OUTLETS	- 1 -	-	-	-	-	-	10	
11	-	KITCHEN GFI-DINING ROOM	- 1 -	-	-	-	-	-	12	
13	-	COMPUTER CIRCUIT	- 1 -	-	-	-	-	-	14	
15	-	MICROWAVE/RANGE HOOD	- 1 -	-	-	-	-	-	16	
17	-	DRYER	- 2 -	-	-	-	-	-	18	
19	-	SPACE	- - -	-	-	-	-	-	20	
21	-	SPACE	- - -	-	-	-	-	-	22	
23	-	SPACE	- - -	-	-	-	-	-	24	
25	-	SPACE	- - -	-	-	-	-	-	26	
27	-	SPACE	- - -	-	-	-	-	-	28	
29	-	SPACE	- - -	-	-	-	-	-	30	
31	-	SPACE	- - -	-	-	-	-	-	32	

Legend: SOLID NEUTRAL NEUTRAL WIRE (W), GROUND BUS GROUND WIRE (G)

TOTAL CONNECTED LOAD (VA) = 30,782
A# = 12,834 B# = 9,554 C# = 8,394

PANEL: LP2 (EXISTING)
LOCATION: REAR WALL SUITE B
FEEDER SOURCE: EXISTING

VOLTAGE: 208/120V, 225A 3Ø, 4W
ENCLOSURE: SURFACE MOUNTED W/EQUIPMENT GND BAR

CKT. NO.	THHN WIRE SIZE	LOAD DESCRIPTION	BREAKER	LOAD (VA)	LOAD			LOAD DESCRIPTION	THHN WIRE SIZE	CKT. NO.
					AMP	POLE	VA			
1	-	GFI RECEPTACLES RIGHT SIDE	- 1 -	-	-	-	-	-	2	
3	-	HEATER/BLOWER UNIT 10 KW	- 2 -	-	-	-	-	-	4	
5	-	SPACE	- - -	-	-	-	-	-	6	
7	-	SPACE	- - -	-	-	-	-	-	8	
9	-	SPACE	- - -	-	-	-	2 30	-	10	
11	-	PINK ROOM	- 1 -	-	-	-	-	-	12	
13	-	BLUE ROOM	- 1 -	-	-	-	-	-	14	
15	-	DRYER	- 2 -	-	-	-	-	-	16	
17	-	REFRIGERATOR	- 1 -	-	-	-	-	-	18	
19	-	WASHER	- 1 -	-	-	-	-	-	20	
21	-	KITCHEN GFI	- 1 -	-	-	-	-	-	22	
23	-	BATHROOM GFI RECEPTACLES	- 1 -	-	-	-	-	-	24	
25	-	KITCHEN GFI COUNTER	- 1 -	-	-	-	-	-	26	
27	-	MICROWAVE/RANGE HOOD	- 1 -	-	-	-	-	-	28	
29	-	SPACE	- - -	-	-	-	2	-	30	
31	-	SPACE	- - -	-	-	-	-	-	32	

Legend: SOLID NEUTRAL NEUTRAL WIRE (W), GROUND BUS GROUND WIRE (G)

TOTAL CONNECTED LOAD (VA) = 30,782
A# = 12,834 B# = 9,554 C# = 8,394

POWER LEGEND

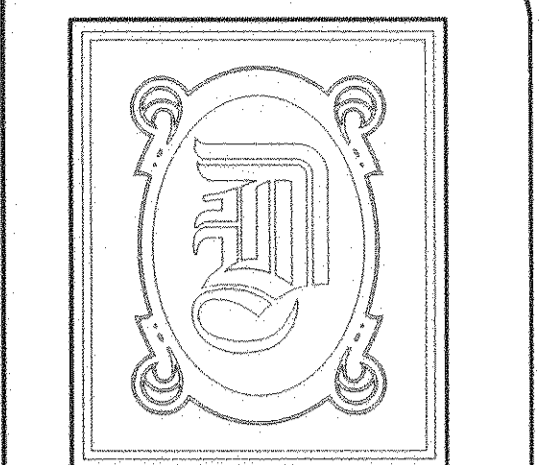
- ⊖ - RECEPTACLE 20A 115V
- ⊖^{GFI} - GFI RECEPTACLE 20A
- ⊖^{WP} - GFI WEATHERPROOF RECEPTACLE
- ☎ - TELEPHONE
- Ⓢ - CABLE TELEVISION
- ⊖²²⁰ - RECEPTACLE 220A
- ⊖^{CLG} - RECEPTACLE 20A 115V CEILING MOUNTED
- ⊖ - DEDICATED CIRCUIT FOR COMPUTERS MOUNTED ABOVE COUNTER TOP
- - EXISTING WALL
- ⊖ - DISCONNECT
- - POWER PANEL
- ⊖ - DOOR CHIME
- ⊖ - THERMOSTAT
- DATA - DATA PANEL
- Ⓢ - SWITCH

LIGHTING LEGEND

- - EXISTING WALL
- ⊖ - 2x4 FLUORESCENT LIGHT FIXTURE (4 BULB)
- ⊖ - 1x4 FLUORESCENT LIGHT FIXTURE (2 BULB)
- VL - EXHAUST FAN VENT/LIGHT
- ☀ - CEILING MOUNTED GLOBE FIXTURE
- ⊖ - WALL MOUNTED FLUORESCENT (1 BULB)
- ⊖ - RECESSED CAN LIGHT
- ⊖ - WALL MOUNTED EXTERIOR FIXTURE (1 BULB)
- ⊖ - SOFFIT MOUNTED FLOOD LIGHT-EXTERIOR
- ⊖ - SOFFIT MOUNTED CAN LIGHT-RECESSED-EXTERIOR
- ⊖ - SMOKE DETECTOR CEILING MOUNTED
- ⊖ - SMOKE DETECTOR WALL MOUNTED
- EXIT - EXIT LIGHT/EMERGENCY LIGHT COMBO W/90 MIN. BATTERY BACKUP
- Ⓢ - SWITCH
- Ⓢ³ - 3-WAY SWITCH

ELECTRICAL NOTES

1. ALL WORK SHALL CONFORM TO THE LATEST EDITION OF THE NATIONAL ELECTRICAL CODE, THE GOVERNING ELECTRICAL CODE AND ALL OTHER INSPECTION DEPARTMENTS HAVING JURISDICTION. OBTAIN CERTIFICATES OR APPROVAL WHERE REQUIRED.
2. ALL MATERIALS FURNISHED SHALL BE NEW AND SHALL BE U.L. LISTED.
3. THE DRAWINGS INDICATE SIZE AND GENERAL LOCATION OF WORK. SCALE DIMENSIONS SHALL NOT BE USED. THE EXACT LOCATION AND LOCATION OF ALL LIGHTING FIXTURES, RECEPTACLES AND TELEPHONE OUTLETS, ETC. SHALL BE DETERMINED BY ACTUAL CONDITIONS IN THE FIELD.
4. PRIOR TO BIDDING, CONTRACTOR SHALL VISIT THE JOB SITE AND FAMILIARIZE THEMSELVES WITH THE EXISTING CONDITIONS.
5. ELECTRICAL CONTRACTOR SHALL COORDINATE HIS WORK WITH OTHER TRADES AND WITH OTHER CONTRACTORS WHOSE WORK MAY AFFECT THIS INSTALLATION.
6. ELECTRICAL CONTRACTOR SHALL COORDINATE INCOMING ELECTRICAL SERVICE WITH UTILITY COMPANY AND INCLUDE IN HIS BID ALL CHARGES AND FEES INCURRED IN MODIFICATIONS.
7. WHERE MORE THAN ONE SWITCH OCCURS IN THE SAME LOCATION, THEY SHALL BE INSTALLED IN A GANG TYPE BOX UNDER ONE COVER PLATE.
8. ELECTRICAL CONTRACTOR SHALL COORDINATE THE TELEPHONE INSTALLATION WITH THE TELEPHONE COMPANY AND THE GENERAL CONTRACTOR.
9. ELECTRICAL CONTRACTOR, BEFORE INSTALLING ANY OF THE WORK, SHALL SEE THAT IT DOES NOT INTERFERE WITH CLEARANCES REQUIRED FOR FINISHED COLUMNS, HUNG CEILINGS, PLASTER, PARTITIONS, WALLS, ETC. AS SHOWN IN THE ARCHITECTURAL DRAWINGS AND DETAILS. IF ANY WORK IS INSTALLED AND IT LATER DEVELOPES THAT SUCH DETAILS OR DESIGN CANNOT BE FOLLOWED, THE CONTRACTOR, AT HIS OWN EXPENSE, SHALL MAKE SUCH CHANGES IN THE WORK AS DIRECTED BY THE ARCHITECT, AS WELL AS TO PERMIT THE INSTALLATION OF THE ARCHITECTURAL WORK AS SHOWN ON THE PLANS AND DETAILS.
10. PERFORM TEST REQUIRED BY THE OWNER OR THE ENGINEER IN CONNECTION WITH THE OPERATION OF THE ELECTRICAL SYSTEM IN THE BUILDING.
11. ALL TESTS SHALL BE MADE IN ACCORDANCE WITH THE LATEST STANDARD OF THE IEEE AND THE NATIONAL ELECTRICAL CODE.
12. MINIMUM CONDUCTOR SIZE SHALL BE #12, 600V INSULATION. MINIMUM SIZE CONDUIT SHALL BE 3/4" EMT FOR INTERIOR USE, AND 3/4" RIGID ALUMINUM FOR EXTERIOR USE. USE TYPE NMC CABLE COPPER, FOR LIGHTS AND RECEPTACLE CIRCUITS. EXTERIOR FITTINGS SHALL BE CAST BOXES AND COVERS. INTERIOR FITTINGS SHALL BE CAST WHERE EXPOSED ON WALLS. STAMPED BOXES MAY BE USED ABOVE CEILINGS IN AIR CONDITIONED SPACES. WHERE LAY IN FIXTURES ARE IN USE, USE 1/4" 2 ALLOWED FOR 6" WIDTH.
13. CONTRACTOR SHALL INSTALL WIRING AND OTHER CIRCUIT COMPONENTS TO MATCH EQUIPMENT ACTUALLY INSTALLED.
14. INSTALL GROUND FAULT RECEPTACLES AT RECEPTACLE LOCATIONS WITHIN 5' OF SINKS OR LAVATORIES, AND AT EXTERIOR LOCATIONS. EXTERIOR RECEPTACLES SHALL ALSO BE WATERPROOF.
15. BONDING AND GROUNDING SHALL BE IN ACCORDANCE WITH NFPA 70:230-63, NFPA 250-23, 250-71 & 250-72.
16. GROUND NEUTRAL IN ACCORDANCE WITH NFPA 70:250-23b.
17. FUSES SHALL BE ITT CLASS K5, 250 VOLT, 200,000 AMP INTERRUPTING CAP.
18. EXTERIOR LIGHTING SHALL BE SHADED OR INWARDLY DIRECTED IN SUCH A MANNER SO THAT NO DIRECT LIGHTING OR GLARE IS CAST BEYOND THE PROPERTY LINE. THE INTENSITY OF SUCH LIGHTING SHALL NOT EXCEED ONE FOOT CANDLE AS MEASURED AT THE ADJUTING PROPERTY LINE.
19. ALL ELECTRICAL, MECHANICAL AND PLUMBING PENETRATING FIRE PARTITIONS SHALL BE FIRE CAULKED. (PENETRATIONS THROUGH RATED CONSTRUCTION SHALL BE SEALED WITH A MATERIAL CAPABLE OF PREVENTING THE PASSAGE OF FLAMES AND HOT GASES WHEN TESTED IN ACCORDANCE WITH ASTM-E814.)



DAMMON ENGINEERING, INC.

CHIEF ENGINEER
EMMETT DAMMON, P.E.

CHIEF ARCHITECT
ROBERT WILTSE

1095 FLORIDA AVENUE
SLIDELL, LA. 70458
OFFICE: 985-649-5832
FAX: 985-641-5950

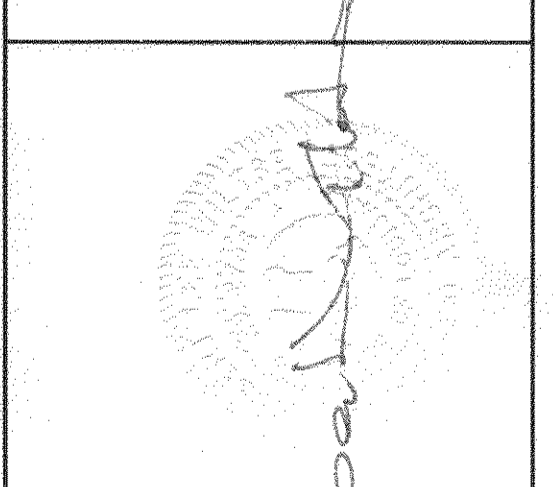
WEBSITE:
WWW.DAMMONENGINEERING.COM

EMAIL:
DAMMONENG@BELL.SOUTH.NET

- ARCHITECTURE
- ENGINEERING
- STUDIES
- PLANNING
- INVESTIGATION
- EXPERT WITNESS

OFFICE RENOVATION FOR ST. TAMMANY PARISH SCHOOLS SLIDELL, LA

ELECTRICAL PLANS



REV:

SCALE: AS NOTED

JOB#: 2035

DATE: 07-07-09

SHEET 9

E-1
OF 9

REVIEWED FOR STATE FIRE MARSHAL AS PER REVIEW LETTER BY OUIS V RANKE
367528