



DAMAGED GUTTERS
N.T.S. A
A1|A2



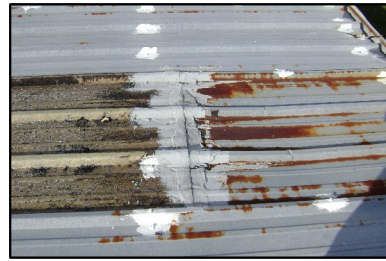
DAMAGED ROOF AND VENTILATORS
N.T.S. B
A1|A2



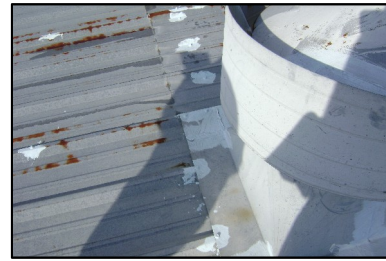
DAMAGED FIBERGLASS ROOF PANELS
N.T.S. C
A1|A2



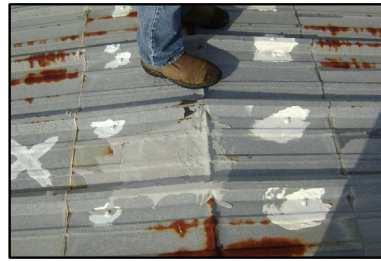
MISSING GUTTER
N.T.S. D
A1|A2



DAMAGED OVERLAPPING PANELS
N.T.S. E
A1|A2



DAMAGED VENTILATOR BASE
N.T.S. F
A1|A2



DAMAGED ROOF RIDGE
N.T.S. G
A1|A2



CORRODED GUTTERS
N.T.S. H
A1|A2



DAMAGED ROOF END RAKE
N.T.S. J
A1|A2



DAMAGED INTERIOR CEILING/ROOF
N.T.S. K
A1|A2



DAMAGED INTERIOR CEILING INSULATION
N.T.S. L
A1|A2



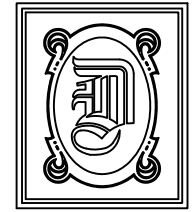
IMPROPER EXTERIOR DRAINAGE SYSTEM
N.T.S. M
A1|A2



DAMAGED EXTERIOR WALL PANELS
N.T.S. N
A1|A2



"CODE VIOLATION"
DRAINAGE OVER ELECTRICAL
N.T.S. P
A1|A2



DAMMON
ENGINEERING, INC.

CHIEF ENGINEER
EMMETT
DAMMON, P.E.

CHIEF ARCHITECT
ROBERT
WILTSE

1095 FLORIDA AVENUE
SLIDELL, LA. 70458
OFFICE: 985-649-5832
FAX: 985-641-5950

WEBSITE:
WWW.DAMMONENGINEERING.COM

EMAIL:
DAMMONENG@BELLSOUTH.NET

ARCHITECTURE
ENGINEERING
STUDIES
PLANNING
INVESTIGATION
EXPERT WITNESS

BUILDING
REROOFING

PEARL RIVER
HIGH SCHOOL
INDUSTRIAL ARTS
BUILDING
PEARL RIVER, LA

EXISTING
"IN NEED
OF REPAIR"
PICTURES

REV:

SCALE: AS NOTED

JOB#: 2043

DATE: 12-11-09

SHEET

A-3

OF