

**DAMMON**  
ENGINEERING, INC.

CHIEF ENGINEER  
EMMETT  
DAMMON, P.E.  
CHIEF ARCHITECT  
ROBERT  
WILTSE

1095 FLORIDA AVENUE  
SLIDELL, LA. 70458  
OFFICE: 985-649-5832  
FAX: 985-641-5950

WEBSITE:  
WWW.DAMMONENGINEERING.COM  
EMAIL:  
DAMMONENG@BELLFLOWER.NET

ARCHITECTURE  
ENGINEERING  
STUDIES  
PLANNING  
INVESTIGATION  
EXPERT WITNESS

**BUILDING  
REROOFINGS**

SIXTH WARD  
JUNIOR HIGH 'S  
CAFETERIUM  
& GYMNASIUM  
PEARL RIVER, LA

**GYMNASIUM  
ROOF PLAN**

REV:

SCALE: AS NOTED

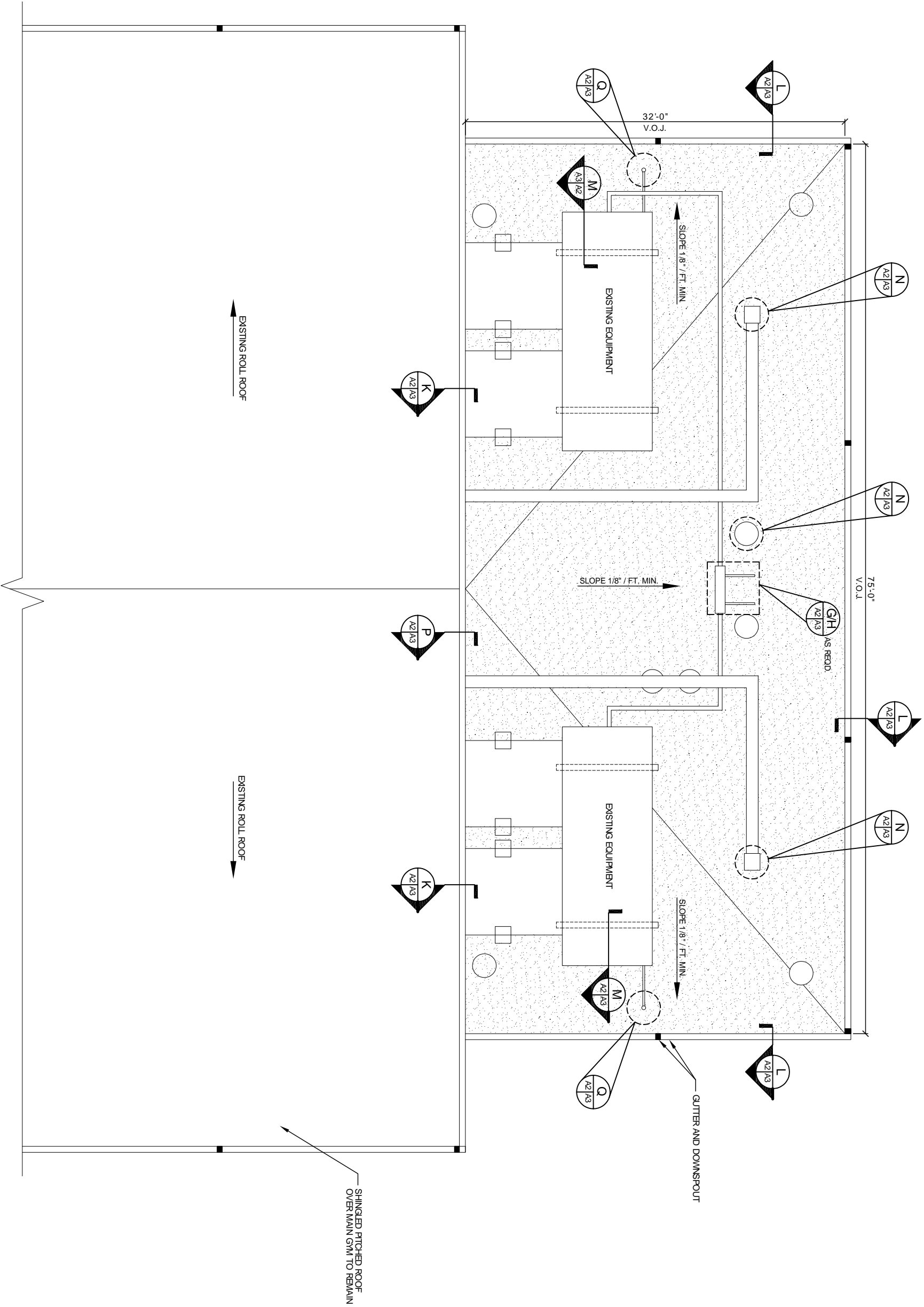
JOB#: 2047

DATE: 4-5-10

SHEET

**A-2**

OF



**GYMNASIUM ROOF PLAN**  
SCALE 1/4" = 1'

SEE ROOF NOTES, SH. A-1  
NOTES:  
1. VERIFY DIMENSIONS.