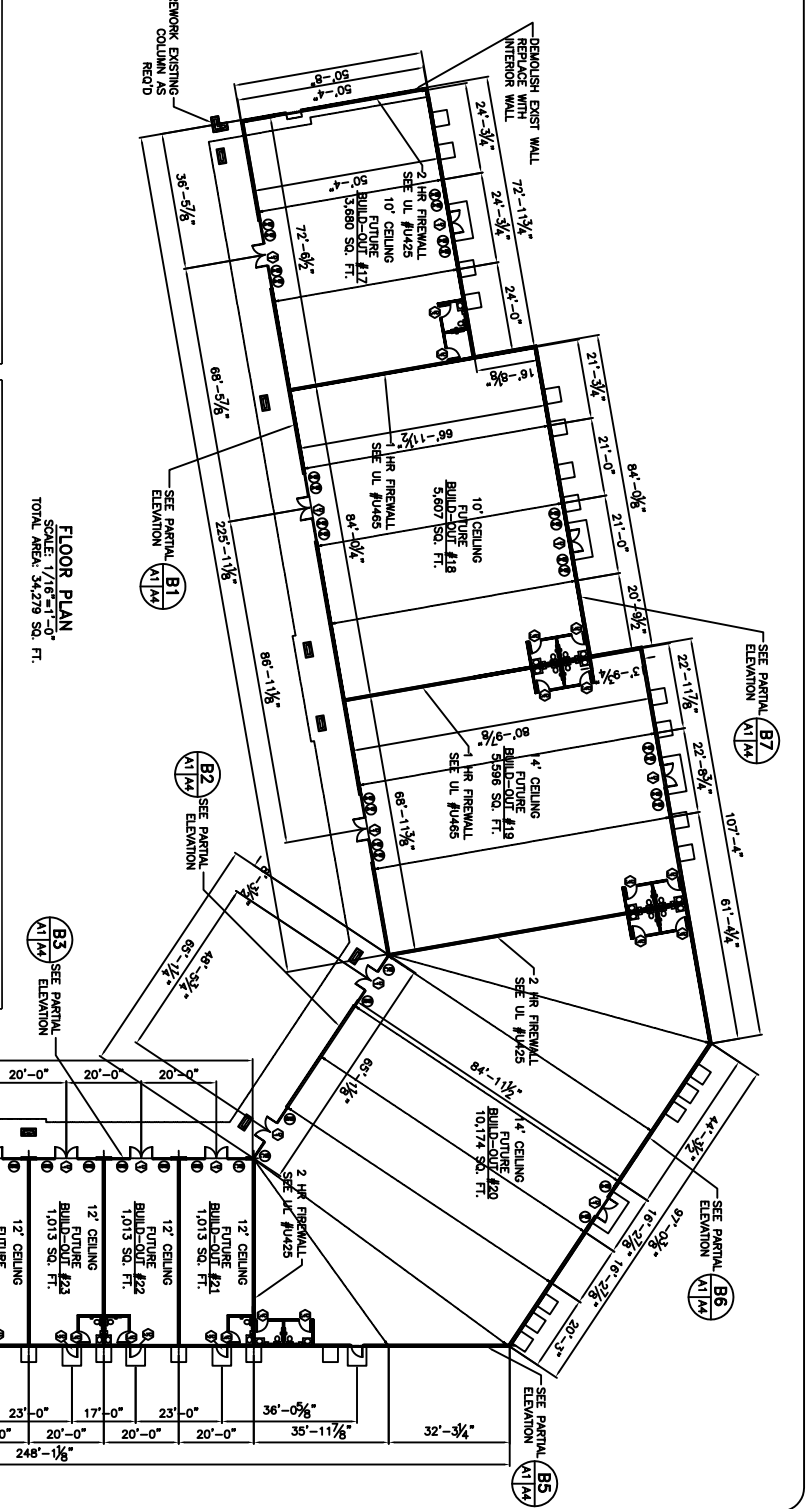


DOOR & HARDWARE SCHEDULE

NO.	DESCRIPTION	TYPE		FRAME		HINGE		LOCK		ACCESSORIES	REMARKS
		TYPE	FRAME	HINGE	LOCK	ACCESSORIES	REMARKS				
1	3/06/20/1 3/4"	HOLLOW WOOD									
2	3/06/20/1 3/4"	HOLLOW METAL									
3	3/06/20/1 3/4"	STEEL									

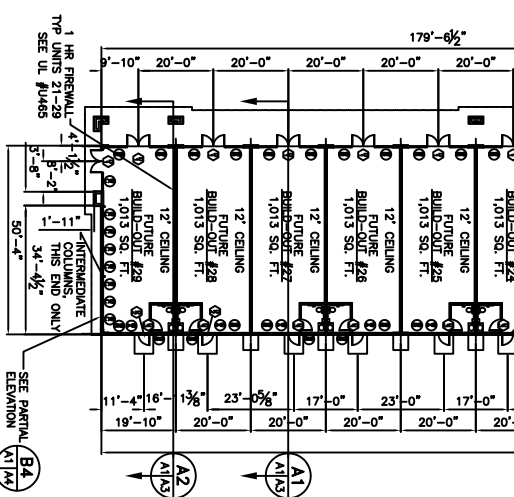
WINDOW SCHEDULE

NO.	DESCRIPTION	TYPE		FRAME		GLASS		UNIT		ACCESSORIES	REMARKS
		TYPE	FRAME	GLASS	UNIT	ACCESSORIES	REMARKS				
A	3/06/8	FIXED									
B	4/06/8	VERT. SLIDE									
C	4/06/8	HORIZ. SLIDE									



FINISH SCHEDULE

ROOM	FLOOR			WALLS			CEILING			REMARKS
	FLOOR	BASE	WALLS	CEILING	CLG HT	REMARKS				
BUILD-OUT #17	CARPET	VINYL	BRD. BATTON PLYWOOD	12' CEILING	10'-0"	DISPLAY UNIT				
BUILD-OUT #18	VINYL TILE	WOOD	GYP BOARD	12' CEILING	10'-0"					
BUILD-OUT #19	HARD WOOD FLOORING	CERAMIC	CMU	12' CEILING	10'-0"					
BUILD-OUT #20	CERAMIC TILE	CERAMIC	BENDE PLYWOOD	12' CEILING	10'-0"					
BUILD-OUT #21			GYP BOARD	12' CEILING	10'-0"					
BUILD-OUT #22			ACOUSTIC TILE (2x2)	12' CEILING	10'-0"					
BUILD-OUT #23				12' CEILING	10'-0"					
BUILD-OUT #24				12' CEILING	10'-0"					
BUILD-OUT #25				12' CEILING	10'-0"					
BUILD-OUT #26				12' CEILING	10'-0"					
BUILD-OUT #27				12' CEILING	10'-0"					
BUILD-OUT #28				12' CEILING	10'-0"					
BUILD-OUT #29				12' CEILING	10'-0"					



SCALE: AS NOTED JOB NO. 1700 DATE: 08-17-05 SHEET <b style="font-size: 2em;">A-1	<b style="font-size: 2em;">D SLIDELL WEST SHOPPING CENTER <b style="font-size: 2em;">DAMMON ENGINEERING. INC. 1095 FLORIDA AVENUE 985-649-5832 SLIDELL, LA. 70458 DAMMONENGINEERING.COM	<b style="font-size: 1.2em;">FLOOR PLAN GARY MUTTER 2170 HWY. 190 WEST SLIDELL, LOUISIANA
--------------------------------------------------------------------------------------------------	----------------------------------------------------------------------------------------------------------------------------------------------------------------------------------------------------------	--------------------------------------------------------------------------------------------------------