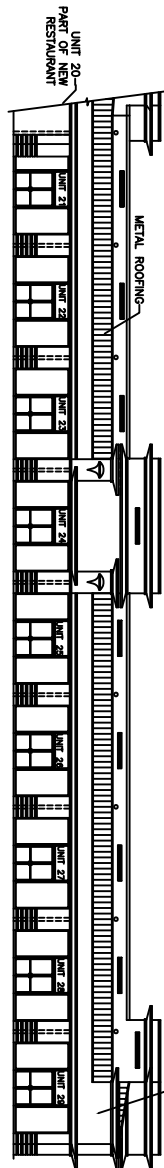
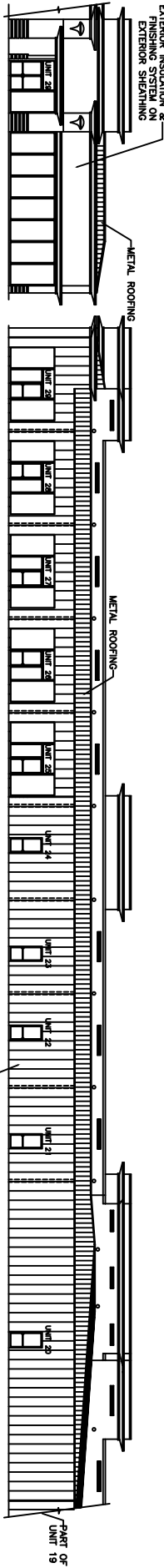


PARTIAL NORTH ELEVATION— UNITS 17-19
SCALE: 3/32"=1'-0"
M/A1

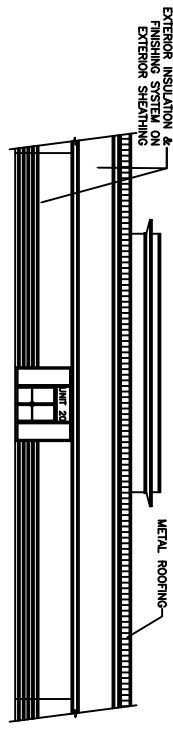


PARTIAL WEST ELEVATION— UNITS 21 - 29 / B3
SCALE: 3/32"=1'-0"
M/A1

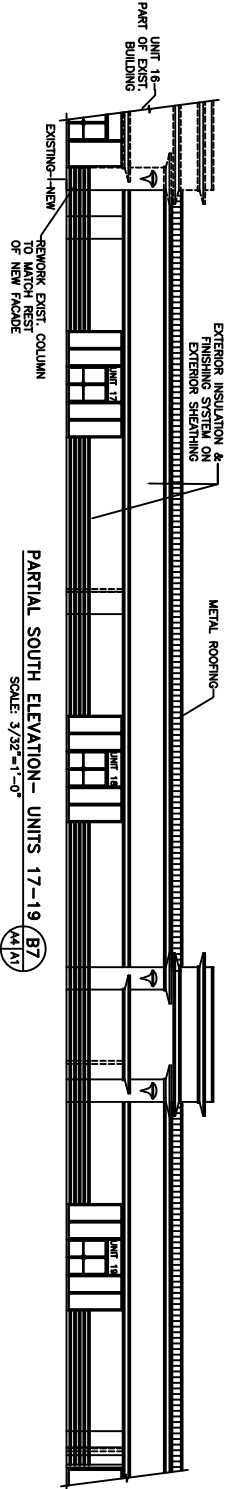
-SECTION-
METAL ROOF SHALL BE
BAKED ON EXTERIOR & ON-
COLUMN BY SHIMMER



EAST ELEVATION— UNITS 21 - 29 / B5
SCALE: 3/32"=1'-0"
M/A1



PARTIAL NORTH ELEVATION
REAR OF RESTAURANT— UNIT 20 / B6
SCALE: 3/32"=1'-0"
M/A1



PARTIAL SOUTH ELEVATION— UNITS 17-19
SCALE: 3/32"=1'-0"
M/A1

PARTIAL SOUTH ELEVATION / B4
END OF UNIT 29
SCALE: 3/32"=1'-0"
M/A1

ELEVATIONS

GARY MUTTER
2170 HWY. 190 WEST
SLIDELL, LOUISIANA

SLIDELL WEST SHOPPING CENTER
DAMMON ENGINEERING, INC.
 1095 FLORIDA AVENUE 985-649-6532 SLIDELL, LA. 70468
 DAMMONENGINEERING.COM

SCALE: AS NOTED
 FILE:
 JOB NO. 1700
 DATE: 08-17-05
 SHEET
 A-4
 OF