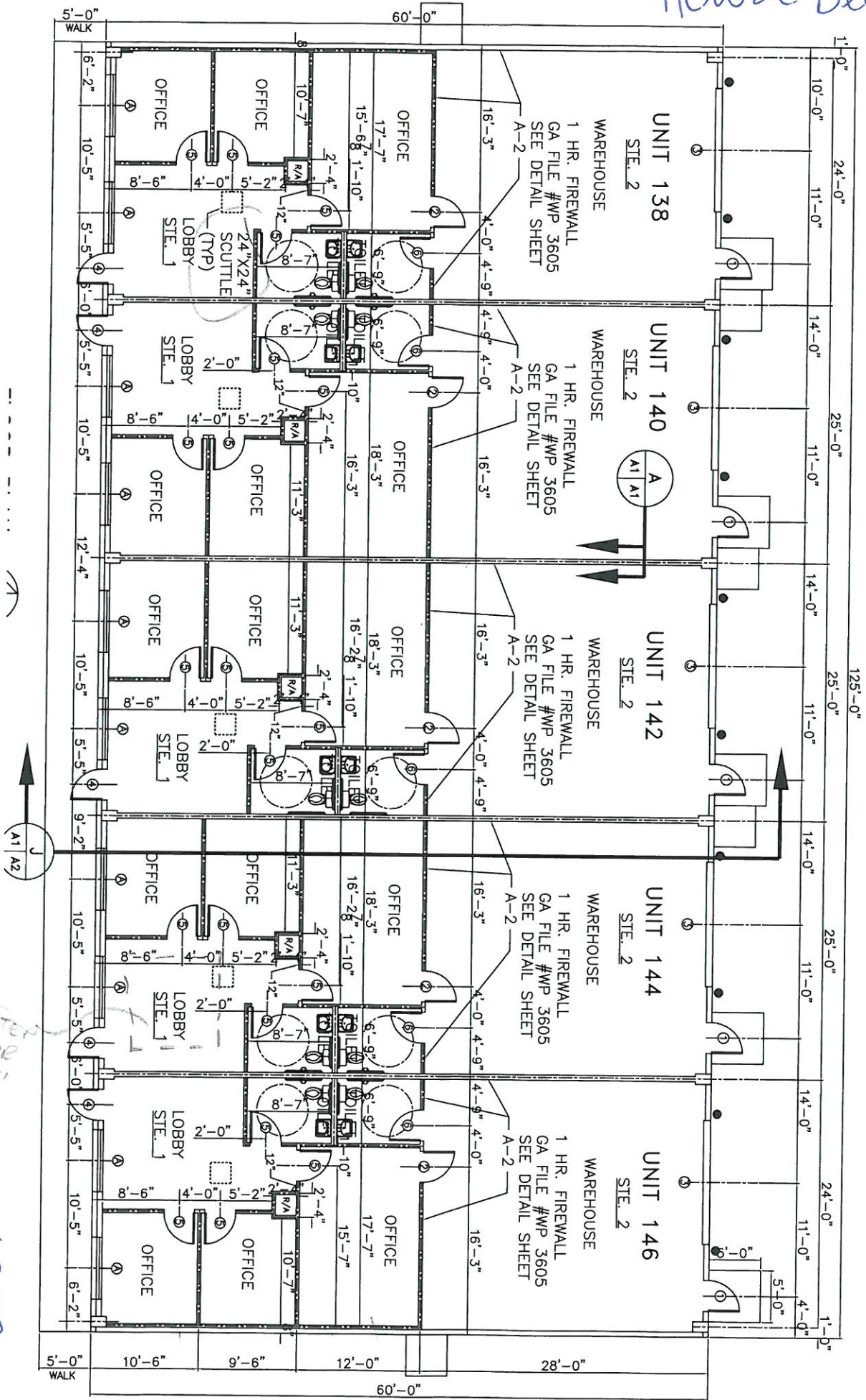
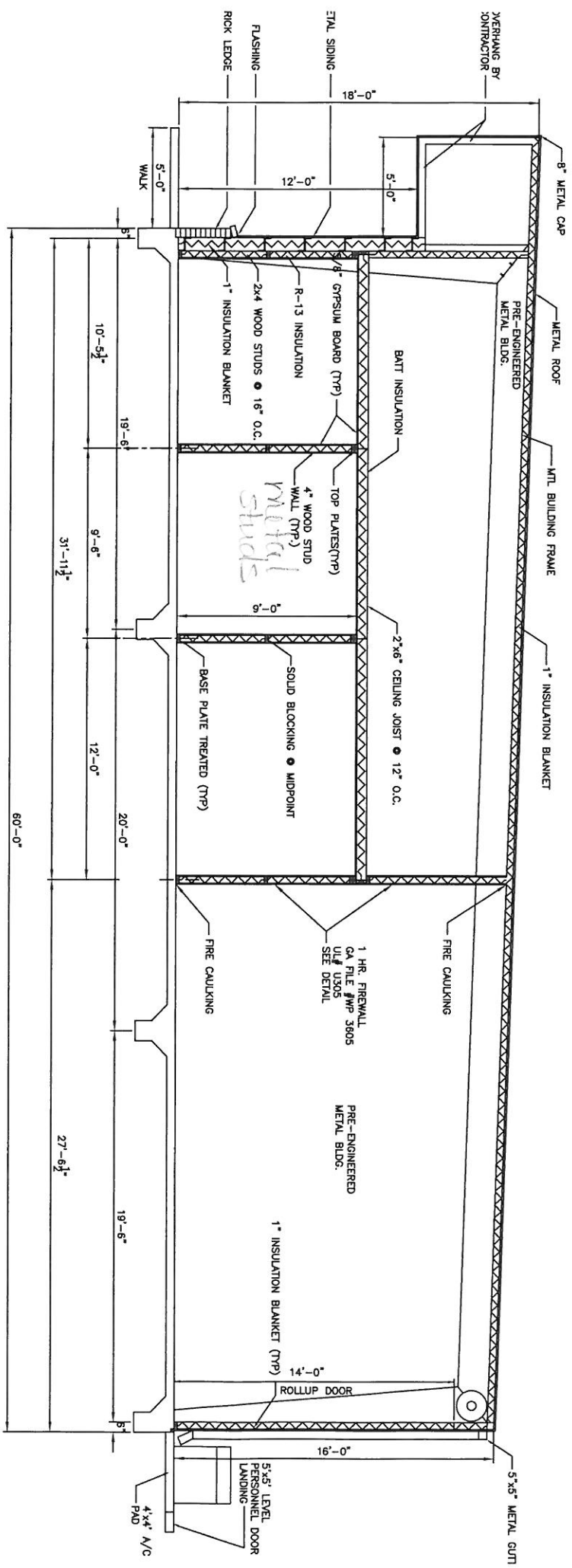


Howze Beach Rd



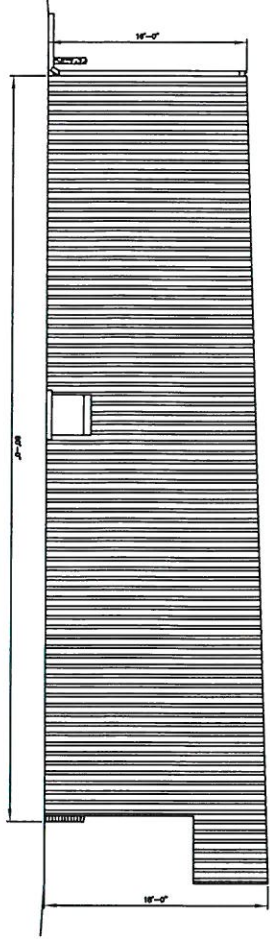
Step up 12"

Job 1879
Boine Int 7

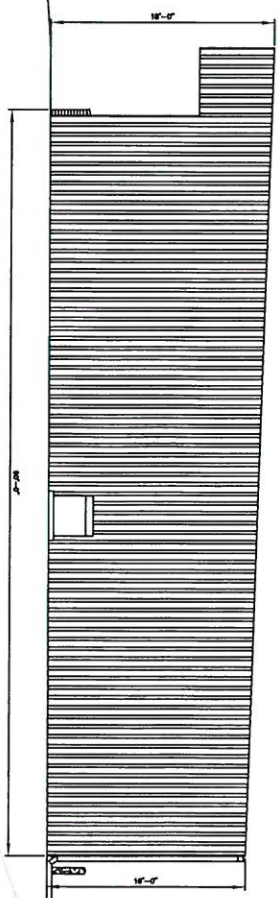


SECTION J
 SCALE: 3/8"=1'-0" (A1) (A2)

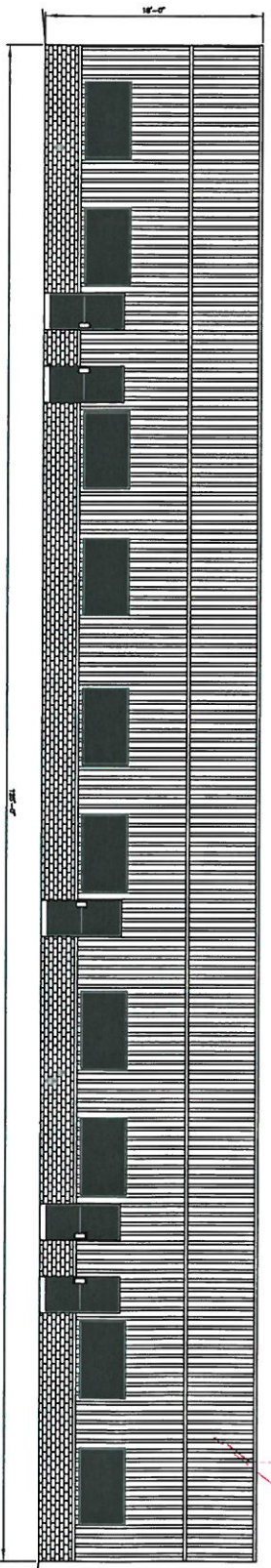
WP 1072



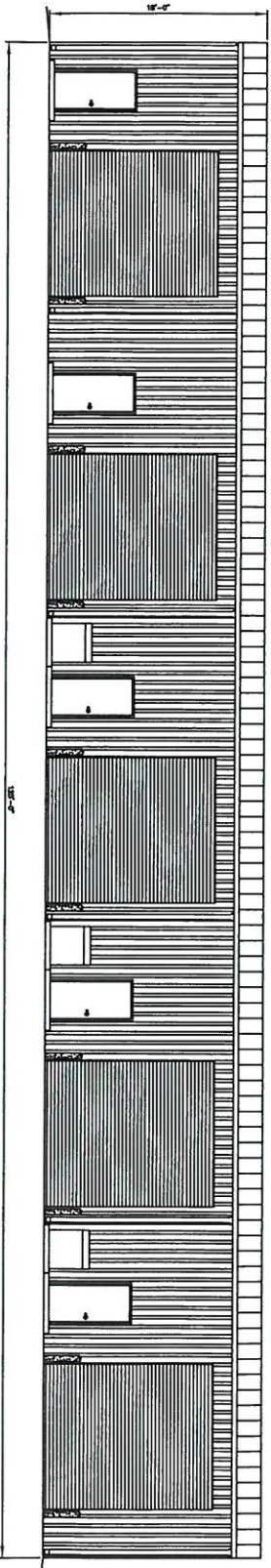
LEFT SIDE ELEVATION
SCALE: 3/16"=1'-0"



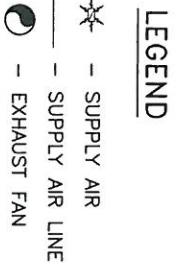
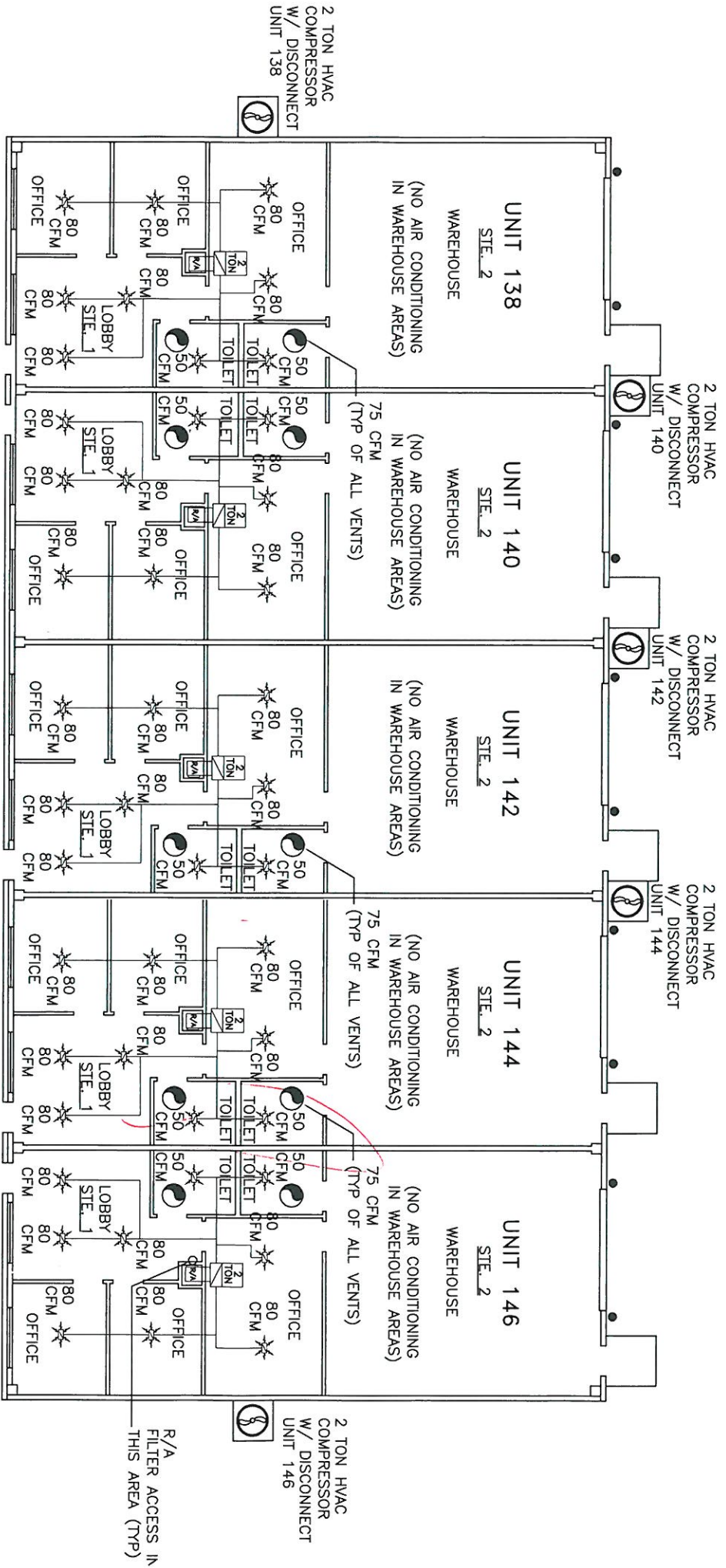
RIGHT SIDE ELEVATION
SCALE: 3/16"=1'-0"



FRONT ELEVATION
SCALE: 3/16"=1'-0"

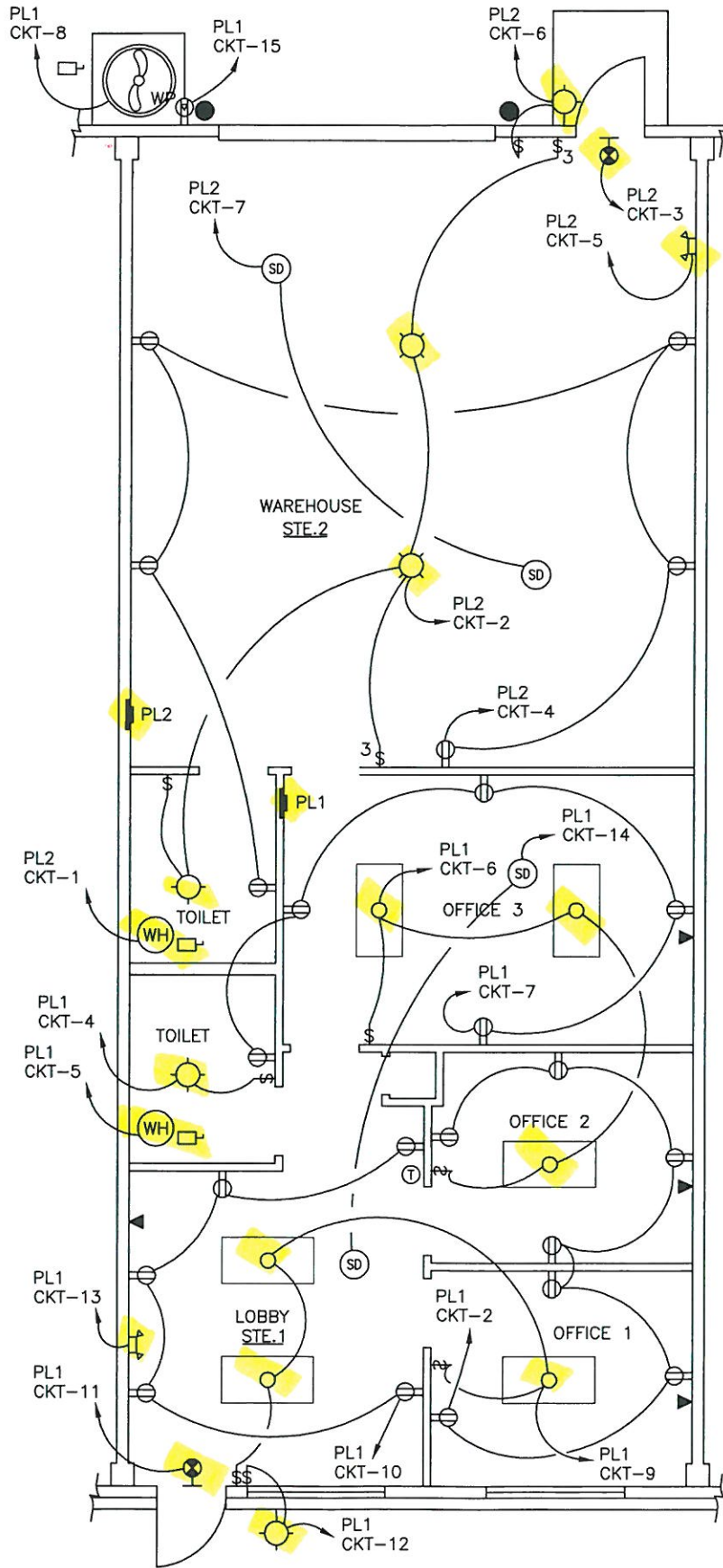


REAR ELEVATION
SCALE: 3/16"=1'-0"



MECHANICAL PLAN
SCALE: 3/16"=1'-0"

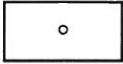





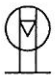

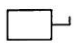



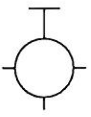
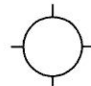



ELECTRICAL PLAN TYPICAL FOR ALL UNITS



ELECTRICAL PLAN
SCALE: 1/4"=1'-0"

ELECTRICAL PLAN TYPICAL FOR ALL UNITS

LEGEND

-  – F1– 1x4 FLUORESCENT FIXTURE SURFACE MT.
4–F40T12 LAMPS, ACRYLIC PRISMATIC LENS
-  – EXIT LIGHT W/ 90 MIN. BATTERY BACKUP
-  – EMERGENCY LIGHT W/ 90 MIN. BATTERY BACKUP
-  – SWITCH
-  – 3 WAY SWITCH
-  – DUPLEX RECEPTACLE
-  – GFI RECEPTACLE
-  – GFI RECEPTACLE (WEATHER PROOF)
-  – DISCONNECT SWITCH
-  – PANEL
-  – THERMOSTAT
-  – 6 GAL. HOT WATER HEATER WITH DISCONNECT
ON DECK ABOVE TOILETS
-  – WALL MOUNTED LIGHT FIXTURE
/W 90 MIN. BATTERY BACKUP
-  – VENT/LIGHT
-  – SMOKE DETECTOR–U.L. #285 WIRED TO
110V. CIRCUIT
-  – TELEPHONE/COMPUTER (VERIFY LOCATION
WITH OWNER BEFORE INSTALLATION)
-  – LOW BAY (250W)
WAREHOUSE LIGHT FIXTURES,

PANEL: PL1
 LOCATION: STE.1 (NEAR DEMISING WALL)
 FEEDER SOURCE: CLECO

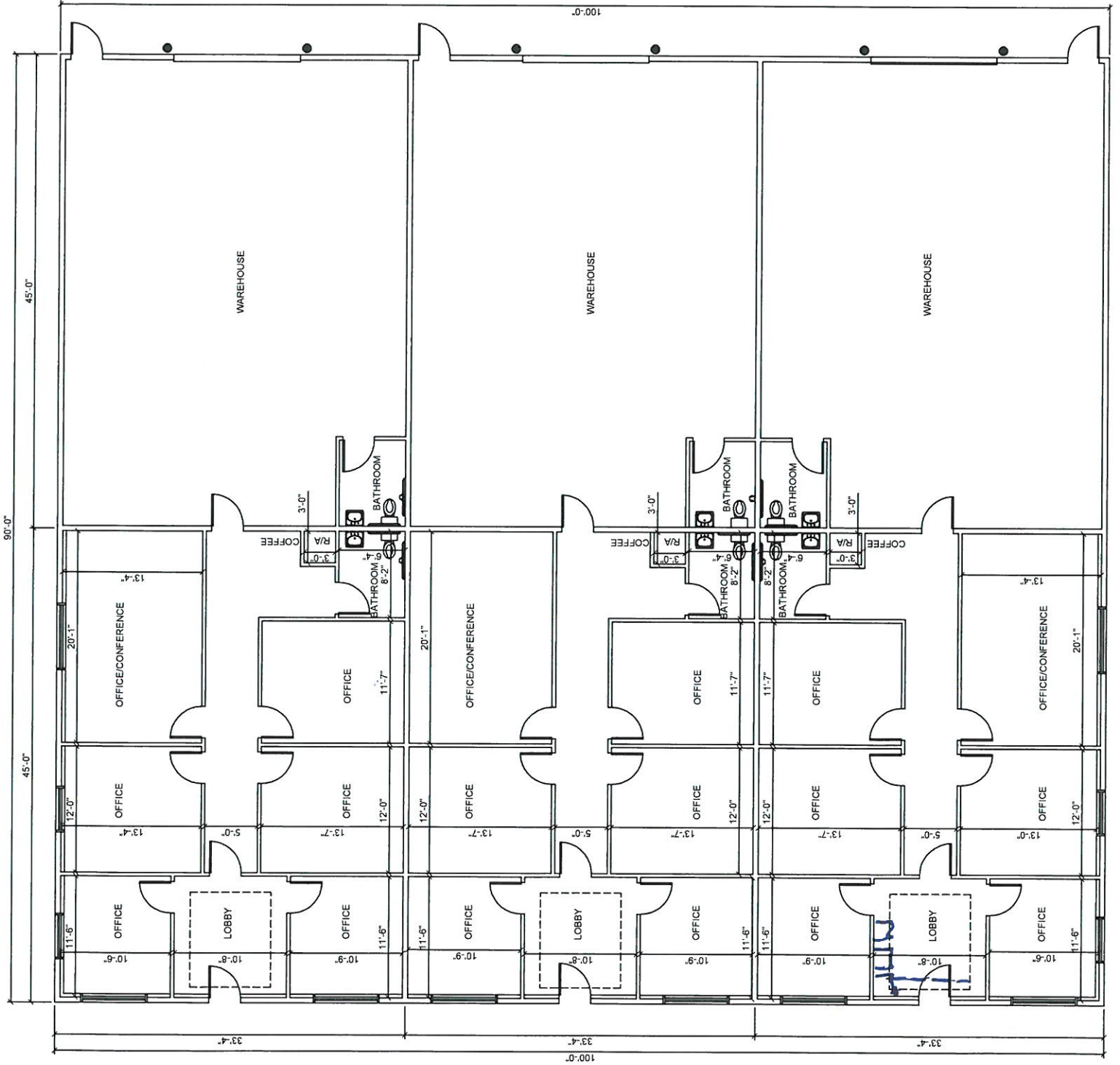
VOLTAGE: 120/240V, 1 ϕ , 3W
 100A MAIN BREAKER, 100A MAIN BUS
 WALL MOUNTED W/EQUIPMENT GROUND BAR
 SIEMENS TYPE EQ OR EQUAL

CKT NO.	LOAD DESCRIPTION	BREAKER		LOAD (VA)	100A		LOAD (VA)	BREAKER		LOAD DESCRIPTION LOCATION	CKT NO.
		AMP	POLE		A ϕ	B ϕ		POLE	AMP		
1	5KW HEATER/BLOWER UNIT	30	2	3000			2000	1	20	OFFICE 1/2 OUTLETS	2
3	W/SAFETY SWITCH				TOILET VENT/LIGHT	4					
5	6 GAL. WATER HEATER	20	1	2000			2000	1	20	OFFICE 2/3 LIGHTS	6
7	OFFICE 3/TOILET OUTLETS	20	1	2000			2000	1	20	A/C COMPRESSOR WITH DISCONNECT	8
9	OFFICE 1/LOBBY LIGHTS	20	1	2000			2000	1	20	LOBBY OUTLETS AND EXTERIOR LIGHT	10
11	EXIT LIGHT	20	1	2000			2000	1	20	EXTERIOR LIGHT	12
13	EMERGENCY LIGHT	20	1	2000			2000	1	20	SMOKE DETECTORS	14
15	WP GFI OUTLET	20	1	2000			-	-	-	SPARE	16
17	SPARE	-	-	-			-	-	-	SPARE	18
19	SPARE	-	-	-			-	-	-	SPARE	20
21	SPARE	-	-	-			-	-	-	SPARE	22
23	SPARE	-	-	-			-	-	-	SPARE	24
				TOTAL CONNECTED LOAD (VA)				GROUND BUS GROUND WIRE (G)			
				A ϕ = 15,500		B ϕ = 13,500					

PANEL: PL2
 LOCATION: STE.2 WAREHOUSE
 FEEDER SOURCE: CLECO

VOLTAGE: 120/240V, 1 ϕ , 3W
 150A MAIN BREAKER, 150A MAIN BUS
 WALL MOUNTED W/EQUIPMENT GROUND BAR
 SIEMENS TYPE EQ OR EQUAL

CKT NO.	LOAD DESCRIPTION	BREAKER		LOAD (VA)	150A		LOAD (VA)	BREAKER		LOAD DESCRIPTION LOCATION	CKT NO.
		AMP	POLE		A ϕ	B ϕ		POLE	AMP		
1	6 GAL. WATER HEATER	20	1	2400			2400	1	20	BAY LIGHTS/TOILET LIGHT	2
3	EXIT LIGHT				WAREHOUSE OUTLETS	4					
5	EMERGENCY LIGHT	20	1	2400			2400	1	20	EXTERIOR LIGHT	6
7	SMOKE DETECTORS	20	1	2400			-	-	-	SPARE	8
9	SPARE	-	-	-			-	-	-	SPARE	10
11	SPARE	-	-	-			-	-	-	SPARE	12
13	SPARE	-	-	-			-	-	-	SPARE	14
15	SPARE	-	-	-			-	-	-	SPARE	16
17	SPARE	-	-	-			-	-	-	SPARE	18
19	SPARE	-	-	-			-	-	-	SPARE	20
21	SPARE	-	-	-			-	-	-	SPARE	22
23	SPARE	-	-	-			-	-	-	SPARE	24
				TOTAL CONNECTED LOAD (VA)				GROUND BUS GROUND WIRE (G)			
				A ϕ = 9,600		B ϕ = 7,200					



PANEL: **PL-1 (Typical For all suites)**
 LOCATION: **Across from R1A**
 FEEDER SOURCE: **Cleco**

VOLTAGE: ~~208/120V~~ **100A 3Ø, 4W**
 ENCLOSURE: ~~SQUARE D TYPE~~ **125A main breaker**
 SQUARE D TYPE ~~CO~~ **LOAD CENTER**
125A main bus
Stiemens Type EA or Egn

120/240V 1Ø 3W 100A
125

CKT. NO.	THHN WIRE SIZE	LOAD DESCRIPTION		BREAKER AMP	POLE	LOAD (VA)	Diagram		LOAD (VA)	BREAKER AMP	POLE	LOAD DESCRIPTION	THHN WIRE SIZE	CKT. NO.
		LOCATION	LOCATION				AØ	BØ						
1		Office 1 & lobby recept.		20	1	900	○	○	800	20	1	Office 2 & Hall recept.		2
3		Office 1 lobby recept.		20	1	800	○	○	900	20	1	Offices 3 & 4 recept.		4
5		Offices 4 & 5 recept.		20	1	900	○	○	-	20	1	SPACE		6
7		Le gal water heater		20	1	2000	○	○	4000	20	2	A/C Suite 1		8
9		A/C Suite 1		20	2	3000	○	○	4000	20	2	4 Tons		10
11		5 Kw Heat		20	1	500	○	○	100	20	1	All emergency/exit lights		12
13		Lobby & Brant outside light		20	1	500	○	○	1800	20	1	All Office lights		14
15				20	1	-	○	○	350	20	1	bath recept & lights		16
17				20	1	-	○	○	-	20	1			18
19				20	1	-	○	○	-	20	1			20
21				20	1	-	○	○	-	20	1			22
23				20	1	-	○	○	-	20	1			24

SOLID NEUTRAL NEUTRAL WIRE (W)

TOTAL CONNECTED LOAD (VA)
 AØ ~~8800~~ **8520**
 BØ ~~7710~~ **7710**

GROUND BUS GROUND WIRE (G)

PANEL: **PL-2 (Typical for all suits)**
 LOCATION: **Warehouse**
 FEEDER SOURCE: **Cleco**

VOLTAGE: **208/120V, 200A 3 ϕ , 4W**
 ENCLOSURE: **SURFACE MOUNTED W/EQUIPMENT GND BAR**
~~SQUARE D TYPE QO LOAD CENTER~~

120/240V 1 ϕ 3W 100A 125A

CKT. NO.	THHN WIRE SIZE	LOAD DESCRIPTION		BREAKER AMP	BREAKER POLE	LOAD (VA)	Diagram		LOAD (VA)	BREAKER POLE	BREAKER AMP	LOAD DESCRIPTION	THHN WIRE SIZE	CKT. NO.
		LOCATION	LOCATION				A ϕ	B ϕ						
1		Warehouse recept.		20	1	640			800	1	20	Warehouse & outside recept.		2
3	SPARE			20	1				2000	1	20	Warehouse & outside recept.		4
5		low bay lights		20	1	400			1000	1	20	low bay lights		6
7		Exteriore light		20	1	100				1	20	Exteriore light		8
9		path recept & lights		20	1	350				1	20	path recept & lights		10
11				20	1					1	20			12
13				20	1					1	20			14
15				20	1					1	20			16
17				20	1					1	20			18
19				20	1					1	20			20
21				20	1					1	20			22
23				20	1					1	20			24

2290 2100

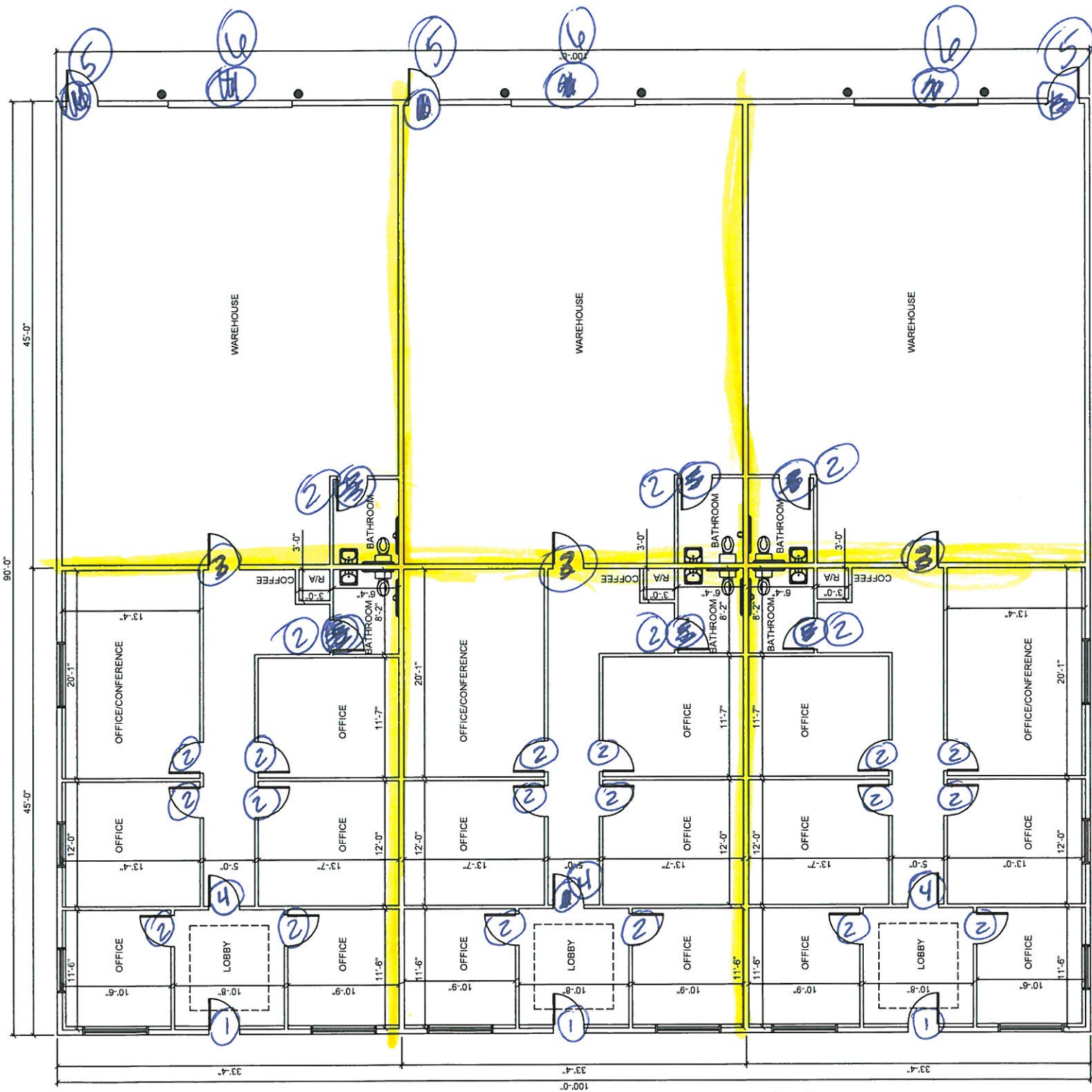
SOLID NEUTRAL NEUTRAL WIRE (W)

TOTAL CONNECTED LOAD (VA)

A ϕ **2290**

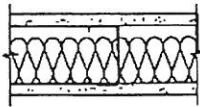
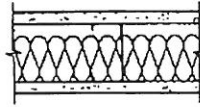
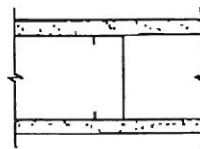
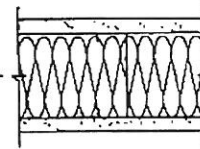
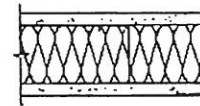
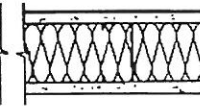
B ϕ **2100**

GROUND BUS GROUND WIRE (G)



Front

Job
1904

WALLS AND INTERIOR PARTITIONS, NONCOMBUSTIBLE			
GA FILE NO. WP 1071	PROPRIETARY*	1 HOUR FIRE	45 to 49 STC SOUND
<p style="text-align: center;">GYPSUM WALLBOARD, STEEL STUDS, MINERAL FIBER INSULATION</p> <p>One layer 1/2" proprietary type X gypsum wallboard or gypsum veneer base applied at right angles to each side of 2 1/2" steel studs 24" o.c. with 1" Type S drywall screws 8" o.c. at vertical joints and 12" o.c. at intermediate studs and wall perimeter. 2" mineral fiber insulation, 3.0 pcf, friction fit in stud space.</p> <p>Vertical joints staggered 24" on each side and on opposite sides. Horizontal joints need not be staggered. (NLB)</p> <p style="text-align: center;">PROPRIETARY GYPSUM BOARD National Gypsum Company - 1/2" Gold Bond® Brand FIRE-SHIELD C™ Gypsum Wallboard</p>			
		<p>Thickness: 3 1/2"</p> <p>Approx. Weight: 5 psf</p> <p>Fire Test: UL R3501, 93NK22748, 9-15-93, UL Design V401; FM WP-731, 9-12-84</p> <p>Sound Test: See WP 1070 (RAL TL69-42, 10-17-68)</p>	
GA FILE NO. WP 1072	GENERIC	1 HOUR FIRE	45 to 49 STC SOUND
<p style="text-align: center;">GYPSUM WALLBOARD, STEEL STUDS</p> <p>One layer 5/8" type X gypsum wallboard or gypsum veneer base applied parallel or at right angles to each side of 3 1/8" steel studs 24" o.c. with 1" Type S drywall screws 8" o.c. at vertical joints and 12" o.c. at floor and ceiling runners and intermediate studs.</p> <p>Joints staggered 24" on each side and on opposite sides. Sound tested with 3 1/2" glass fiber friction fit in stud space. (NLB)</p>			
		<p>Thickness: 4 7/8"</p> <p>Approx. Weight: 6 psf</p> <p>Fire Test: See WP 1350 (FM WP-45, 6-19-68; OSU T-1770, 8-61; ULC 79T484, 79T500, 79T497, 8-12-81, ULC Design W415)</p> <p>Sound Test: NRCC B16-NV, 2-3-81</p>	
GA FILE NO. WP 1073	PROPRIETARY*	1 HOUR FIRE	45 to 49 STC SOUND
<p style="text-align: center;">GLASS MAT GYPSUM BOARD, STEEL STUDS, GLASS FIBER INSULATION</p> <p>One layer 1/2" proprietary glass mat water-resistant gypsum backing board applied parallel to each side of 2 1/2" steel studs 16" o.c. with 1" Type S drywall screws 8" o.c. at vertical joints and 12" o.c. at intermediate studs and wall perimeter. 3 1/2" glass fiber insulation, 0.526 pcf, friction fit in stud space.</p> <p>Joints staggered 16" on opposite sides and covered with 10 x 10 mesh glass tape and tie adhesive. (NLB)</p> <p style="text-align: center;">PROPRIETARY GYPSUM PANEL PRODUCT G-P Gypsum - 1/2" DensShield®</p>			
		<p>Thickness: 3 1/2"</p> <p>Approx. Weight: 5 psf</p> <p>Fire Test: CTC 1897-1655, 1-11-88</p> <p>Sound Test: See WP 1070 (RAL TL69-42, 10-17-68)</p>	

*Contact the manufacturer for more detailed information on proprietary products.

