

STRUCTURAL NOTES

These notes are complementary to the drawings and specifications and are not to be considered all inclusive.

APPLICABLE CODES AND SPECIFICATIONS

- Southern Standard Building Code
- American Concrete Institute
- American Institute of Steel Construction
- American Iron and Steel Institute
- American Welding Society

DESIGN LOADS

MEZZANINE LOADING SCHEDULE

Live Load	105 psf
24" Concrete Slab	31
Joists	4
Sprinkler	4
Roof	8
Ceiling & Lights	3
Walls	3
MEZZANINE TOTAL LOAD TO JOISTS	167 psf

ROOF LOADING SCHEDULE

Live Load	30 psf
Build-up Roof	6
1" Rigid Insulation	1
Membrane	1
Sprinkler	4
Ceiling & Lights	3
Walls	3
ROOF TOTAL LOAD TO JOISTS	47 psf

MATERIAL SPECIFICATIONS

- Concrete: f'c = 3000 psi + 28 days
- Reinforcing Steel: 47,000 psi yield point
- Structural Steel: A-36
- Joist: 18 Series
- Boils for Steel Connections: A-125, bearing type connection, threads excluded from shear planes

SHOP DRAWINGS

- Submit the following for approval by the Architect and/or Engineer:
 - Reinforcement drawings, in accordance with latest "ACI Detailing Manual"
 - Layout and details of all structural steel and bar joists.
- Contractor shall verify all shop drawing dimensions and details with contract documents.

FOUNDATION

Footings are designed for a maximum soil bearing pressure of 4,000 psf and shall be placed on a firm strata capable of safely sustaining the elevations shown on plans. Report any different or unusual conditions to Architect and/or Engineer.

CONCRETE REINFORCEMENT

Unless otherwise detailed, protective concrete cover for reinforcing steel shall not be less than: Cast against and exposed to earth: 4" Slabs on Grade: 1" Place W.M. at 1/3 slab thickness from top.

MASONRY WALLS

All masonry walls shall have horizontal joint reinforcement at 16 inches on center vertically unless other spacing is indicated. Reinforcement shall be for full width of double-width walls. See architectural drawings for location and details of masonry construction. Concrete fill all block cells and cavities below finish floor of finish grade, whichever is higher. Concrete fill all jamb cells and cavities from foundation to finish grade. All U-Block bond beams shall be reinforced with 1-#5 cont., hooked at corners and intersections. All bond beams shall be reinforced with 1-#5 vertical in each of three corner cells, lapped to foundation and bond beam at roof.

COLUMNS IN MASONRY WALLS

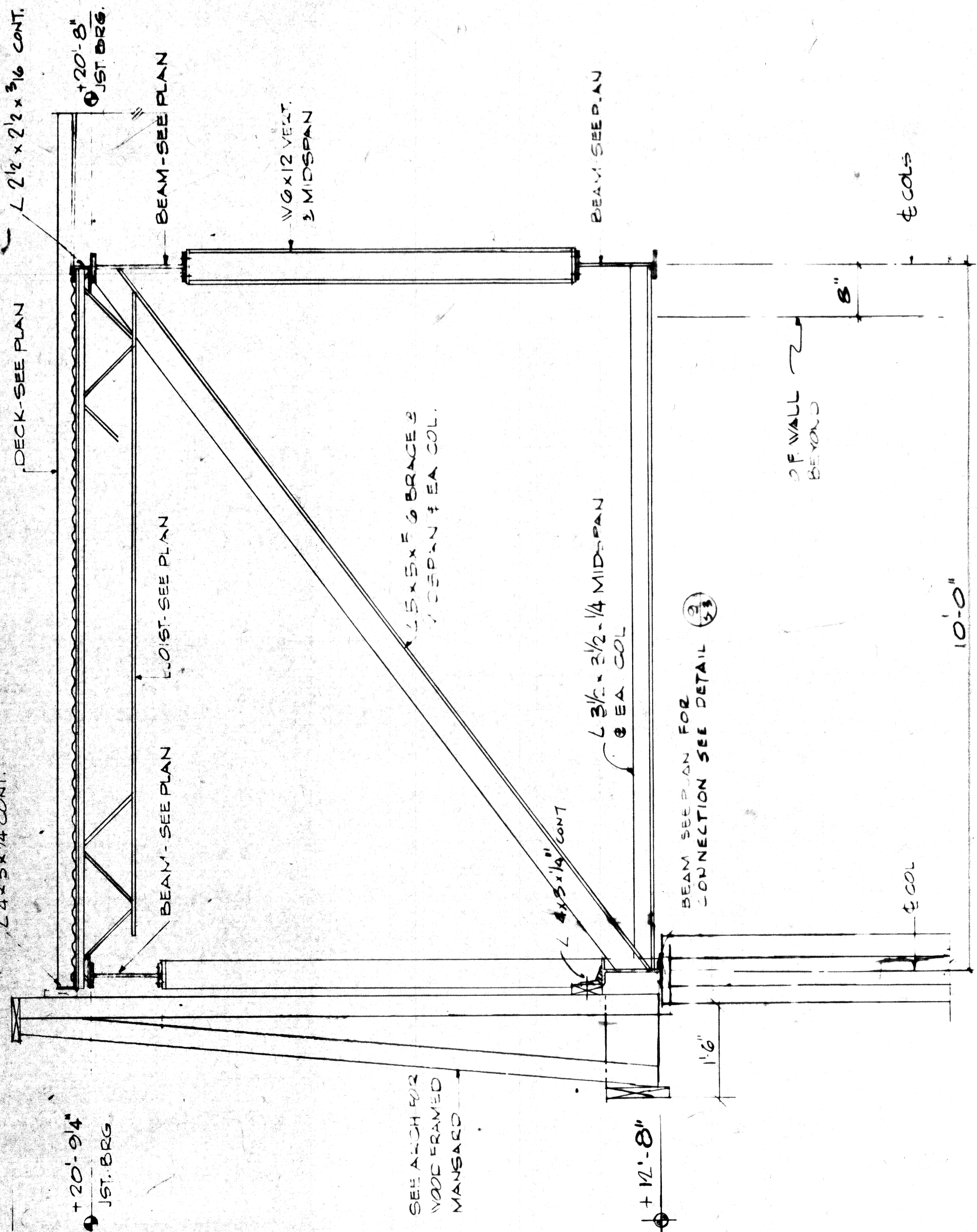
Columns in masonry walls: (a) Grout fill voids around columns in masonry walls to (b) Brace columns in masonry walls with 2-#3 x 6'-0" through holes in columns + 6'-0" o.c. vertically anchored in masonry joint.

LINTELS

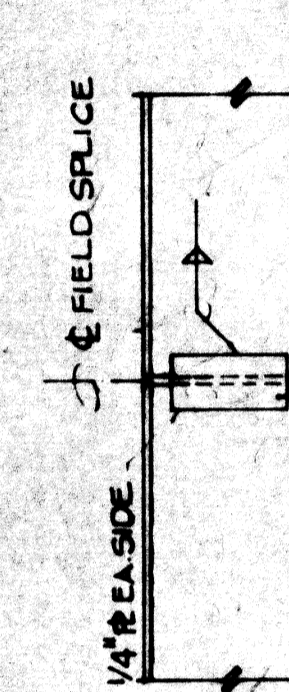
Where a lintel or beam is scheduled or detailed, provide steel section and detail. Lintels shall be masonry capable of safely sustaining the load over the masonry opening.

MISCELLANEOUS

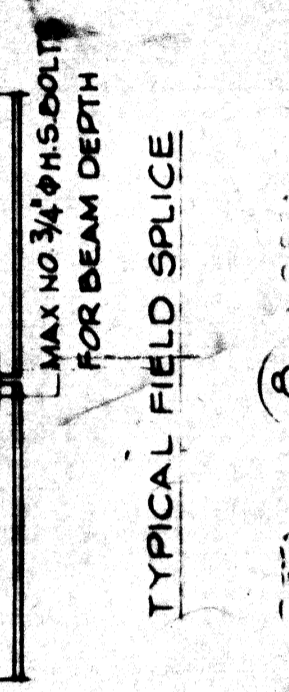
Reinforce all concrete slabs on grade with 6x6-10/10 W.M.M. unless otherwise noted. Provide vertical surfaces, provide precast expansion joint material as specified. Elevations such as 10'-0" or 11'-4" are distances above or below finish floor elevation.



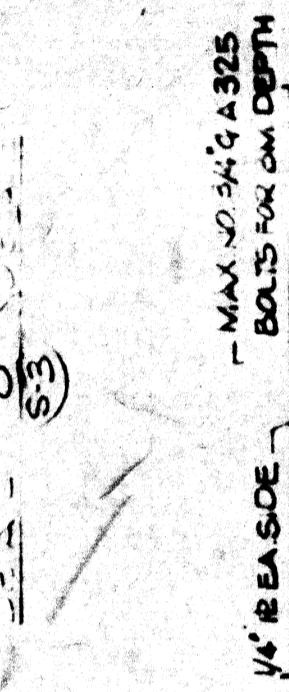
SECTION 1 (3/4" = 1'-0")



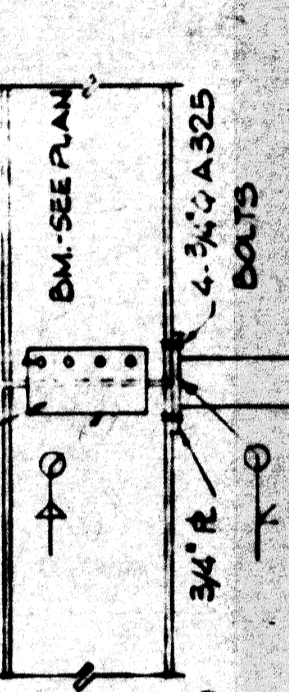
DETAIL 7 (NO SCALE)



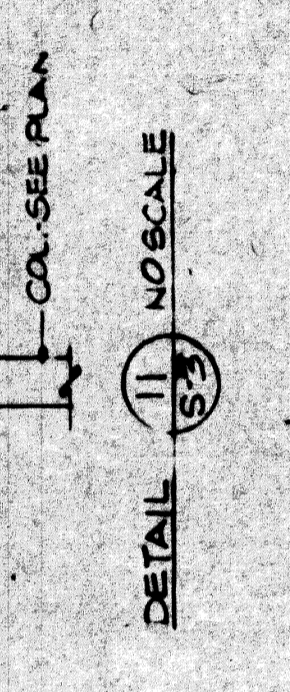
DETAIL 8 (NO SCALE)



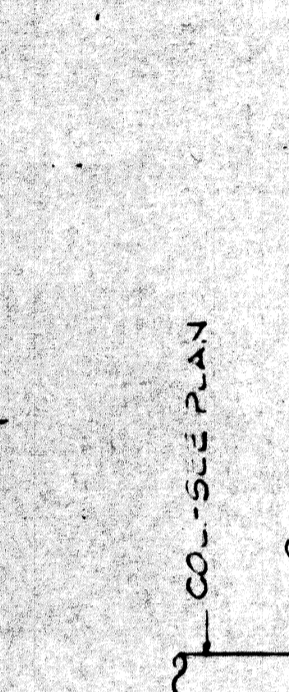
DETAIL 9 (NO SCALE)



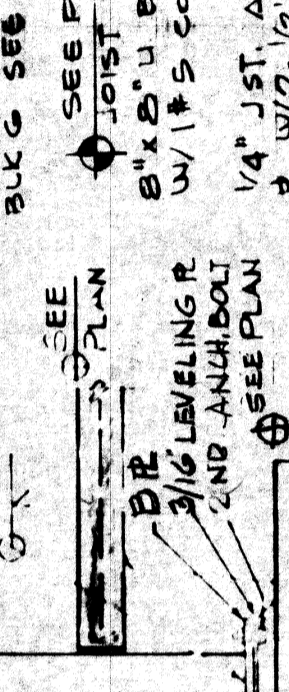
DETAIL 10 (NO SCALE)



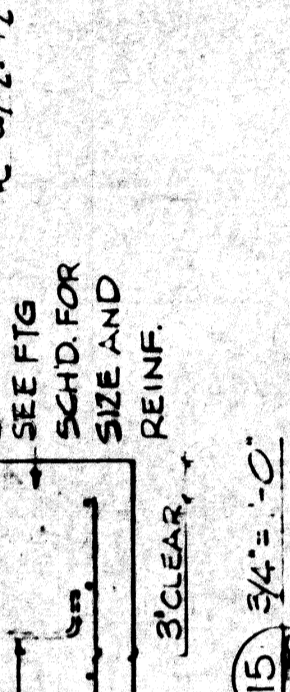
DETAIL 11 (NO SCALE)



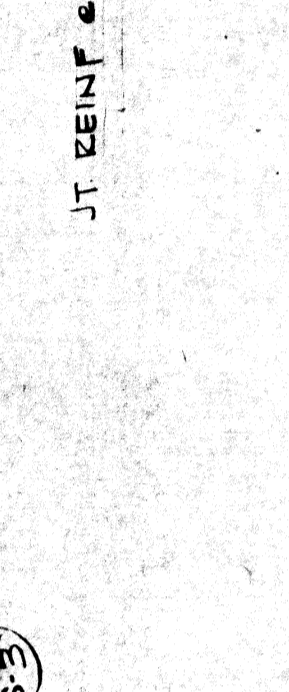
DETAIL 12 (NO SCALE)



DETAIL 13 (NO SCALE)



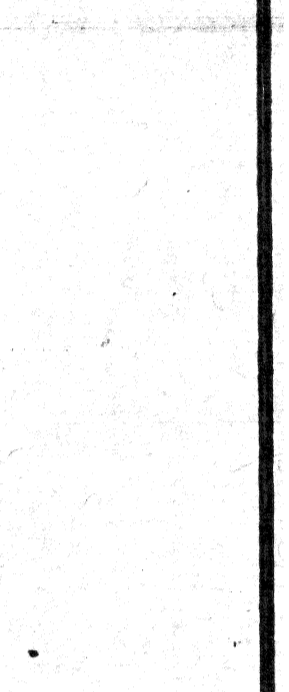
DETAIL 14 (NO SCALE)



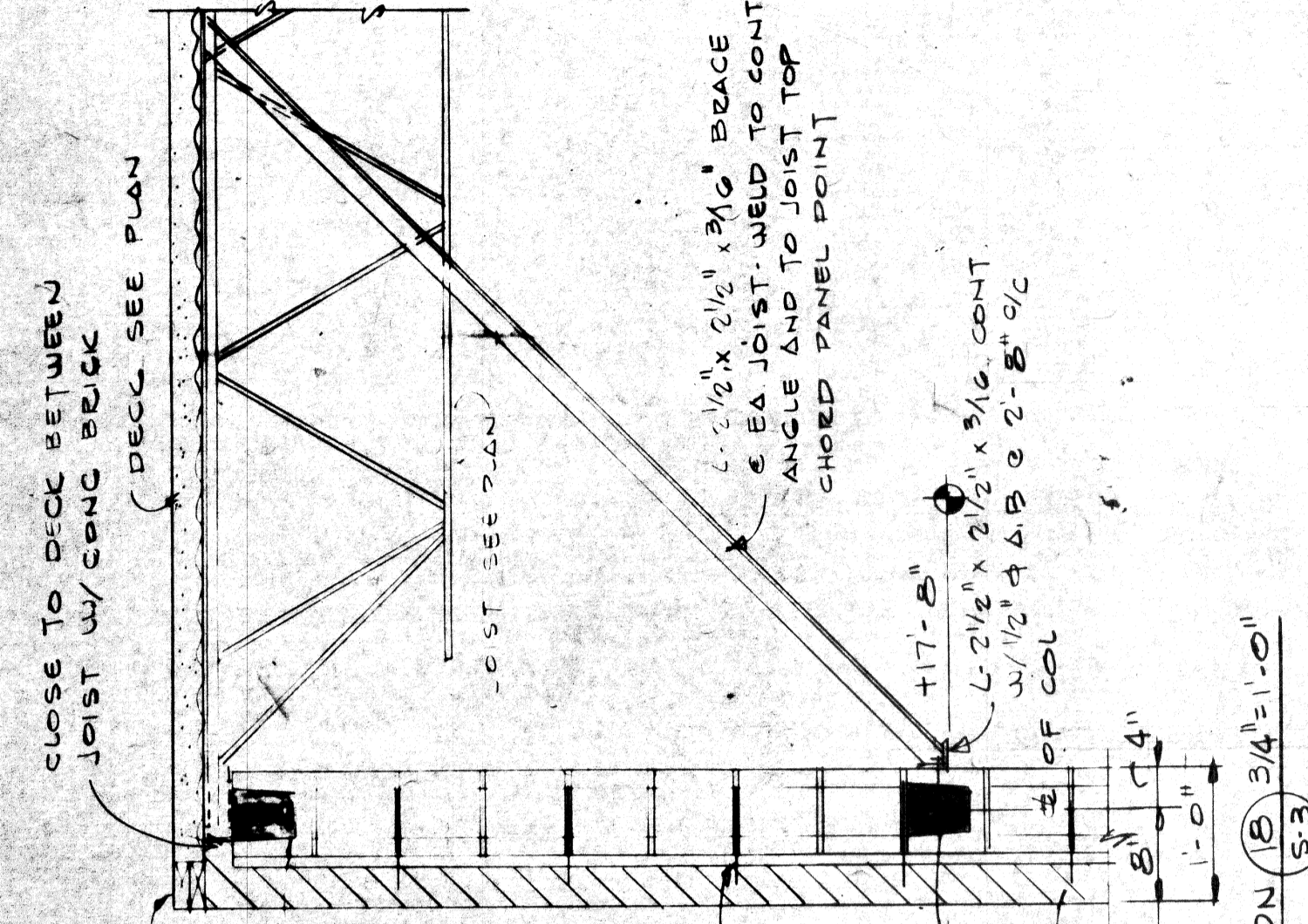
DETAIL 15 (NO SCALE)



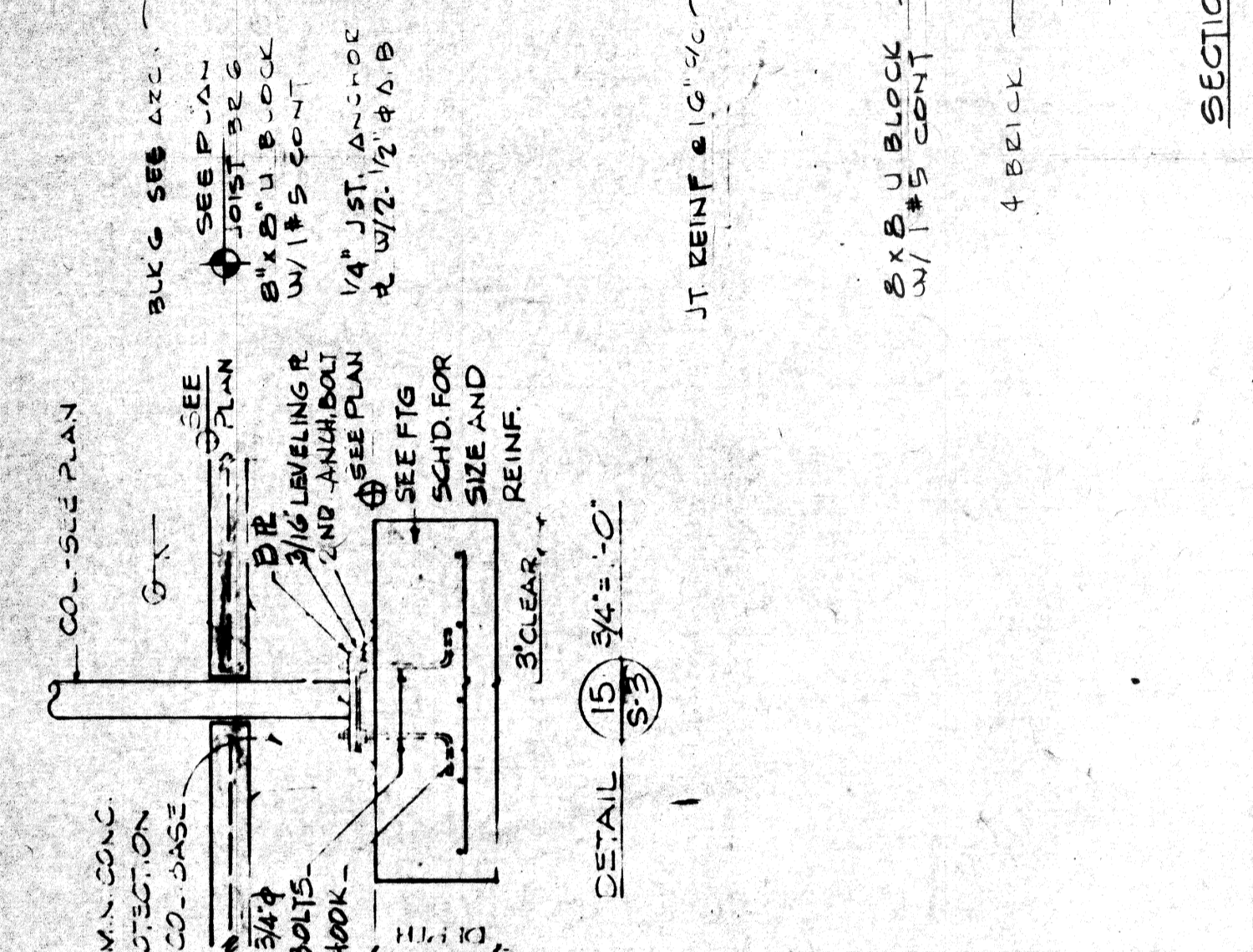
DETAIL 16 (NO SCALE)



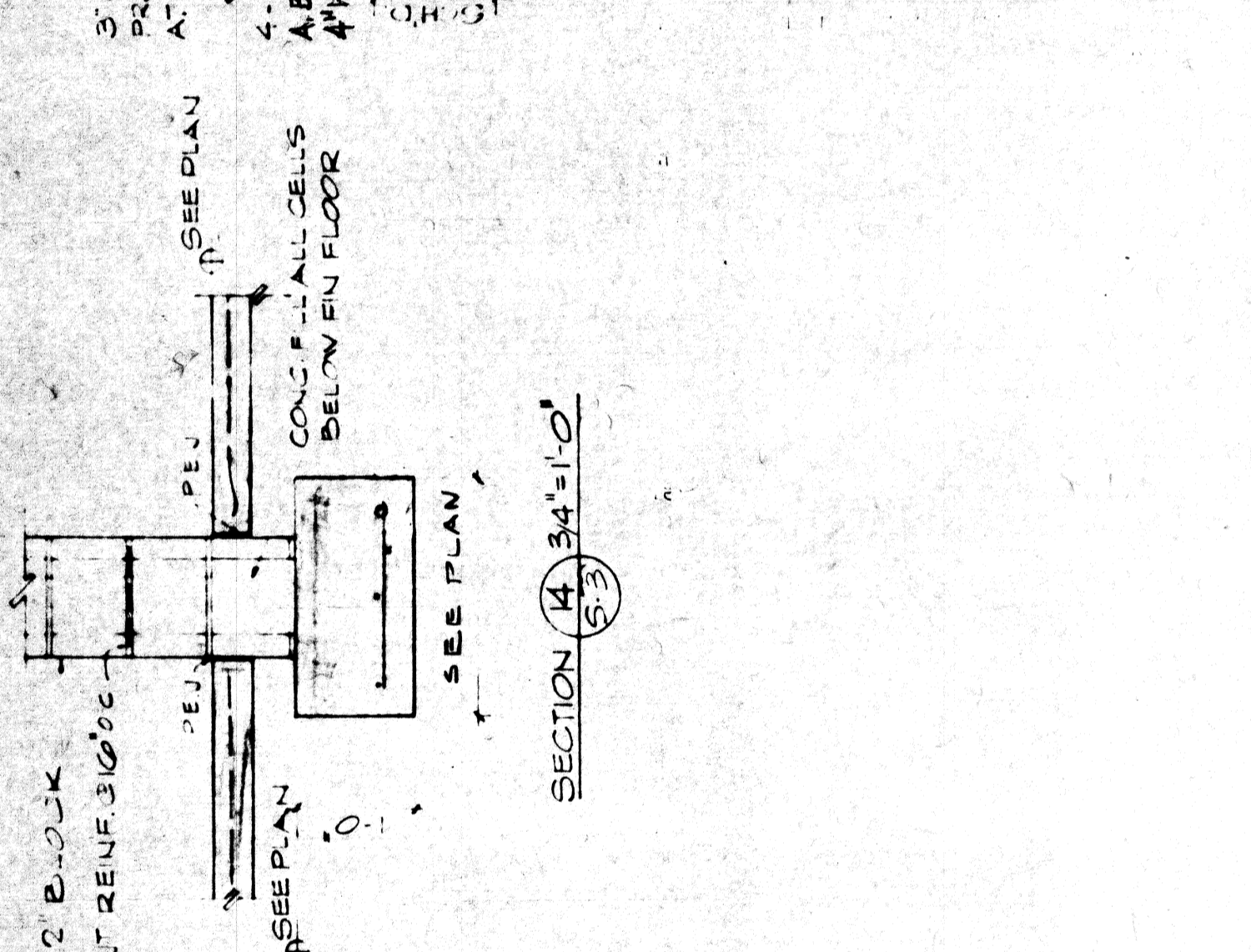
DETAIL 17 (NO SCALE)



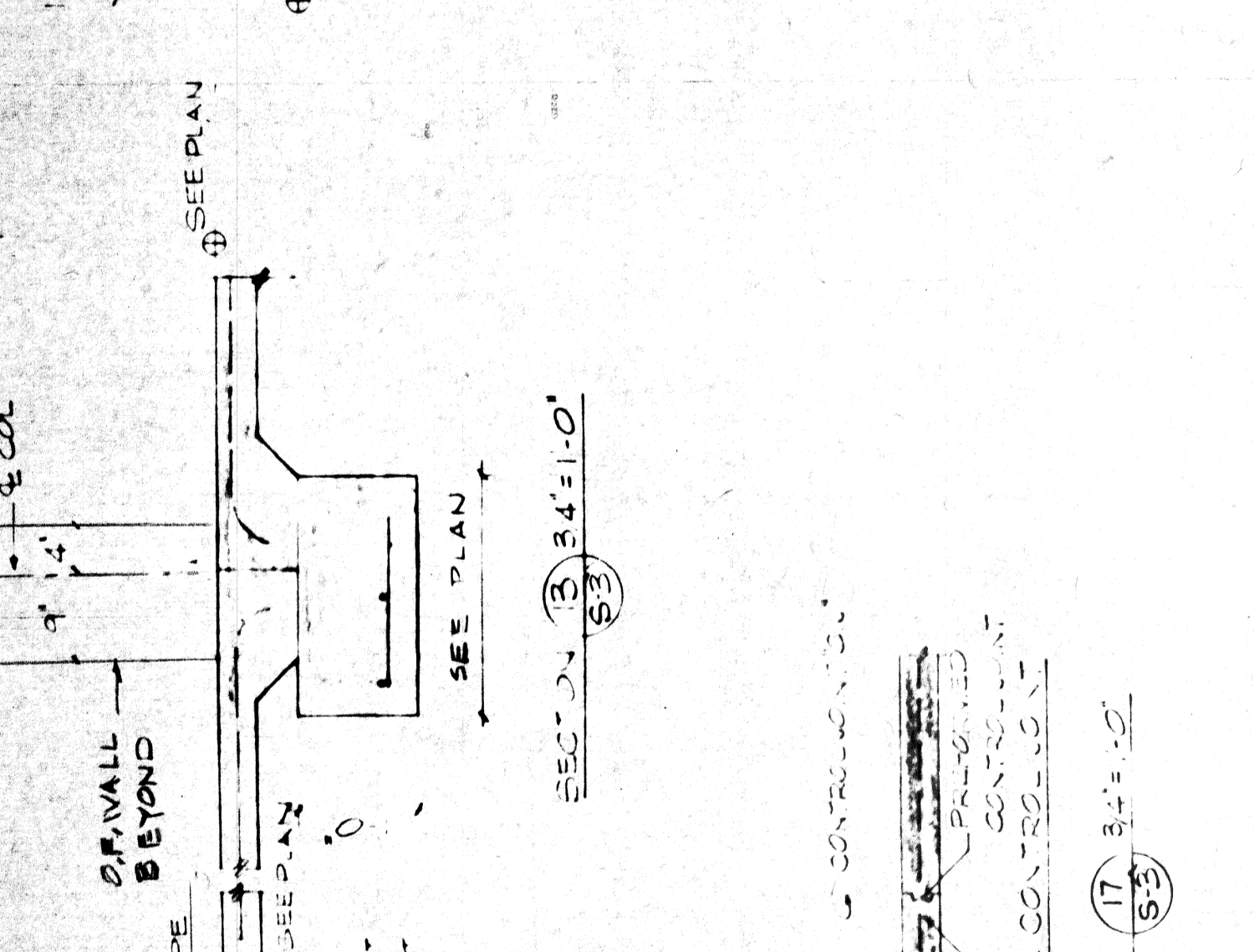
SECTION 18 (3/4" = 1'-0")



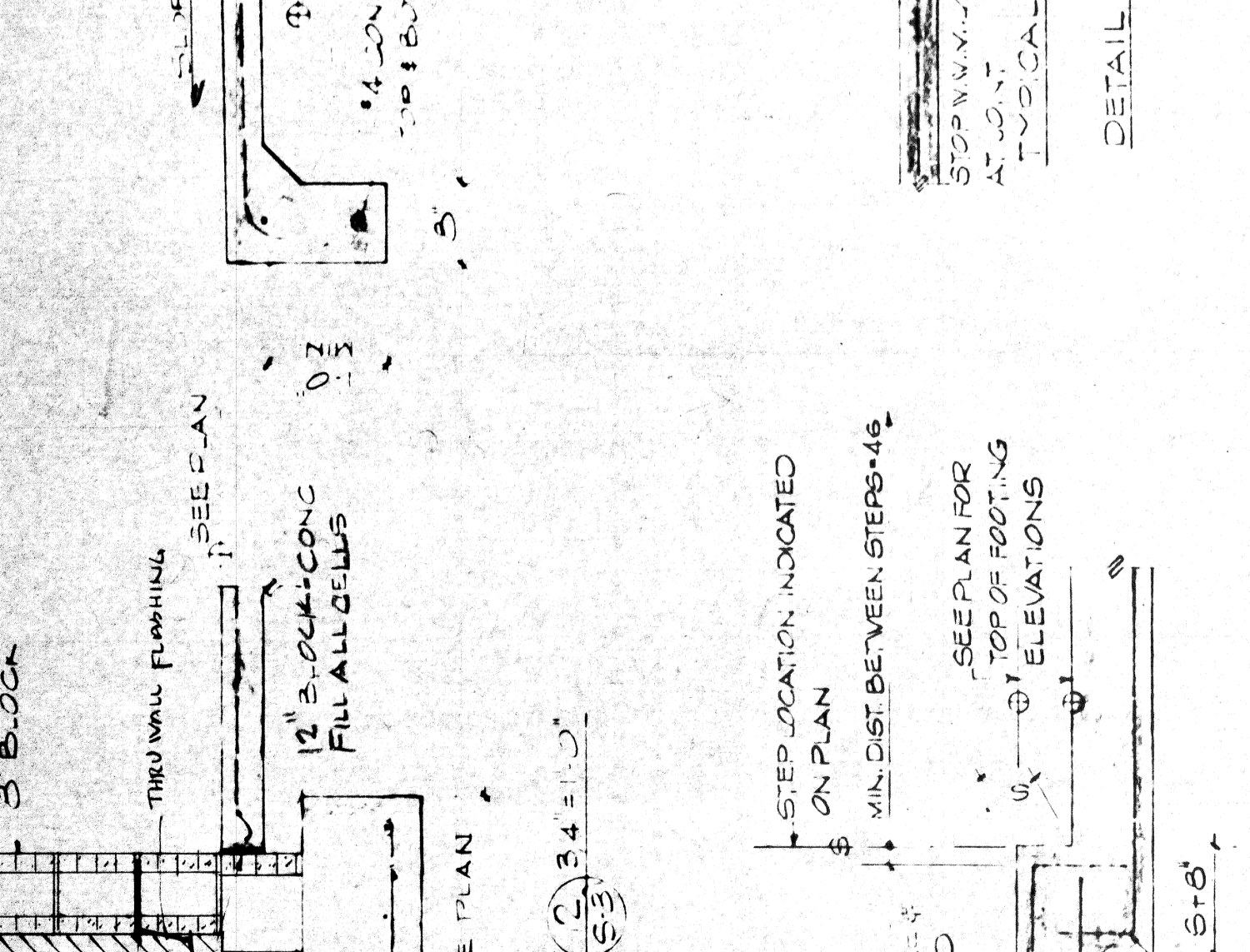
SECTION 19 (3/4" = 1'-0")



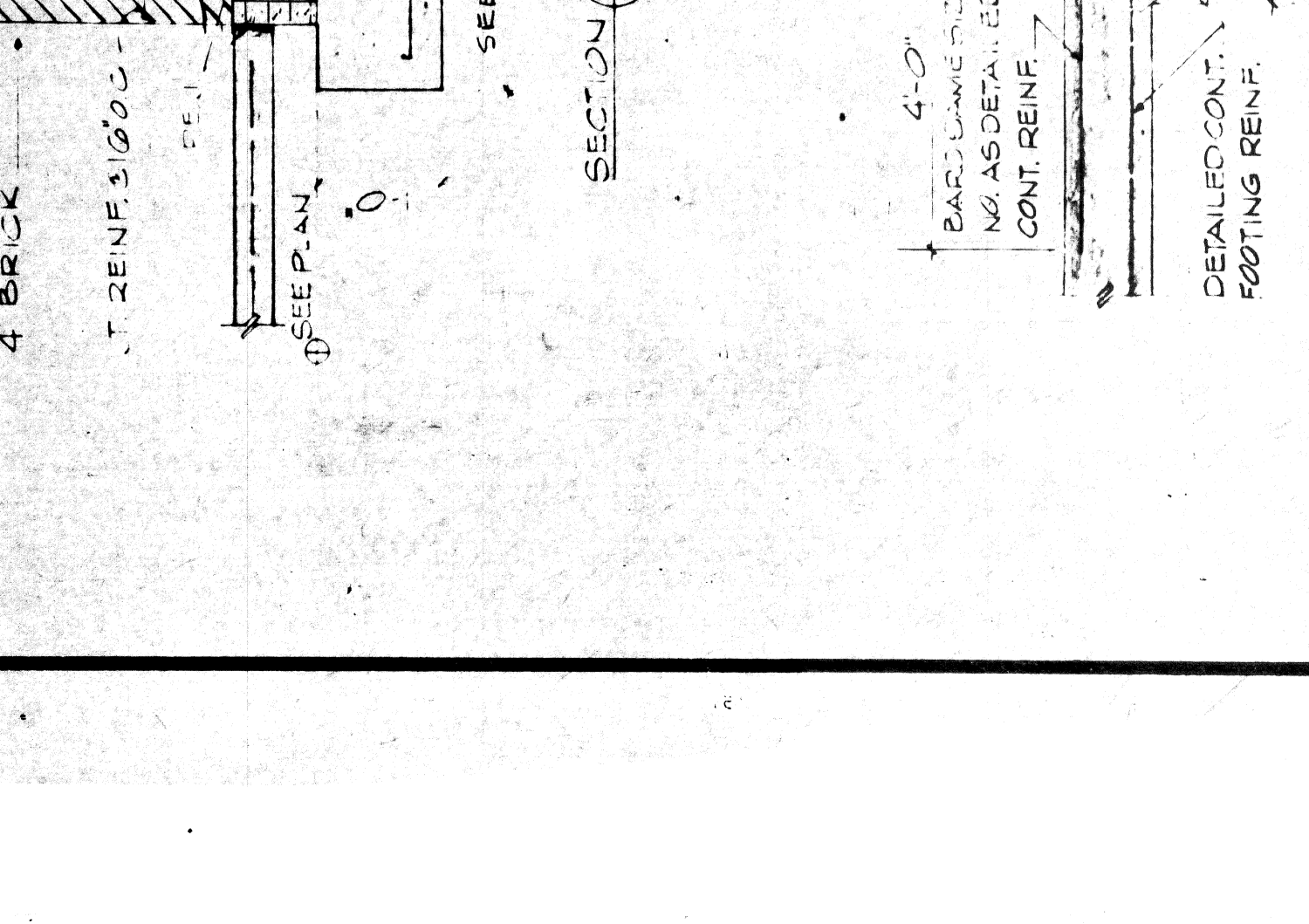
SECTION 20 (3/4" = 1'-0")



SECTION 21 (3/4" = 1'-0")



SECTION 22 (3/4" = 1'-0")



SECTION 23 (3/4" = 1'-0")