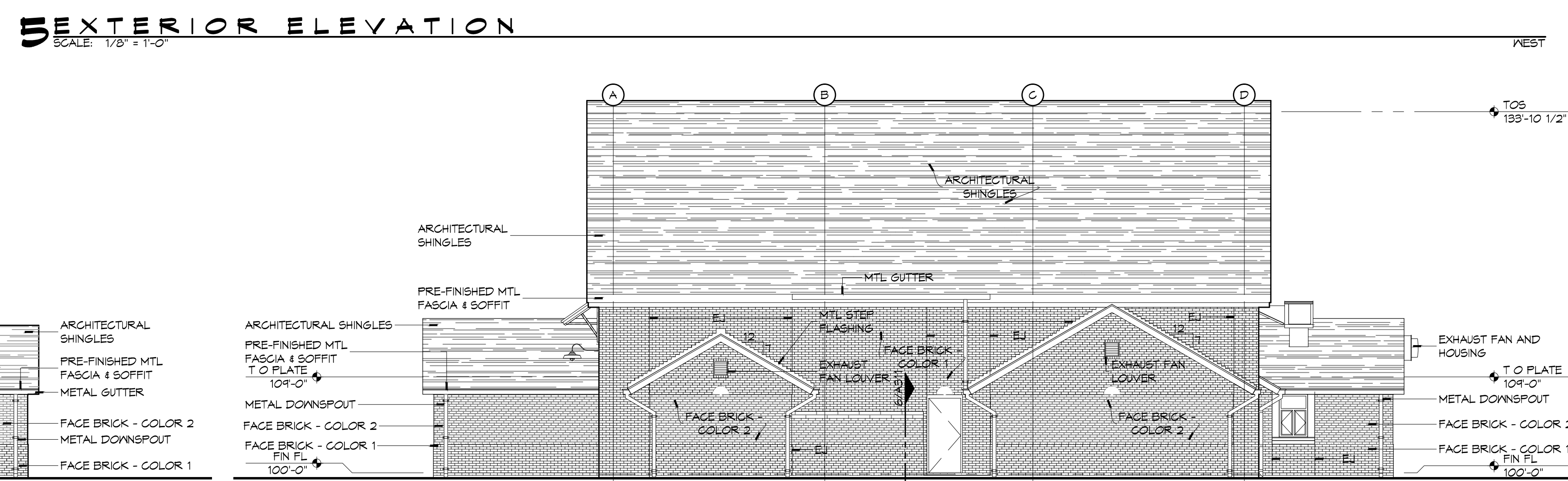
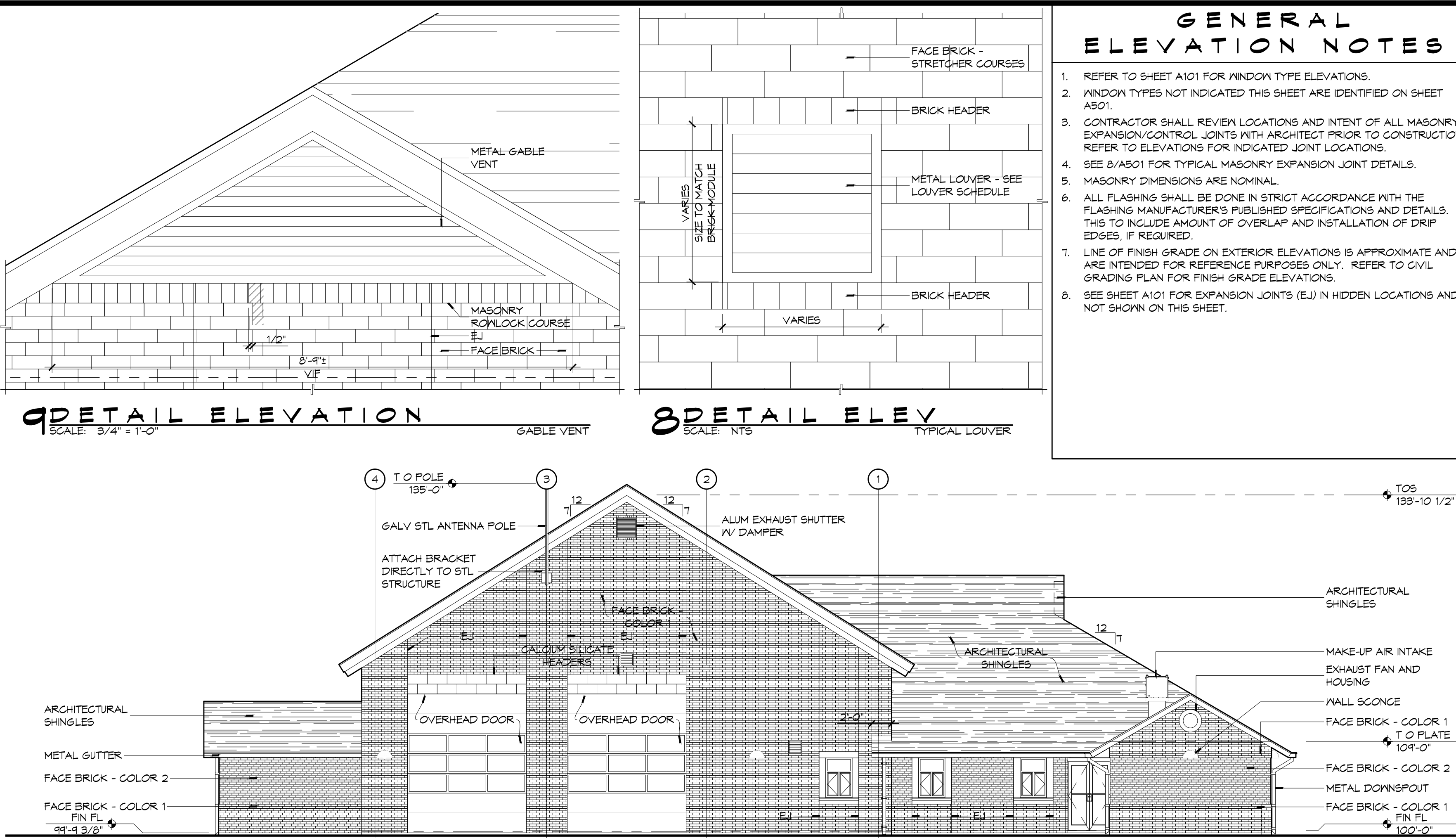
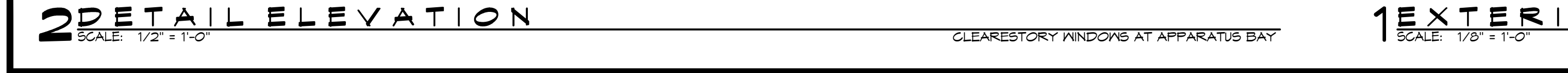
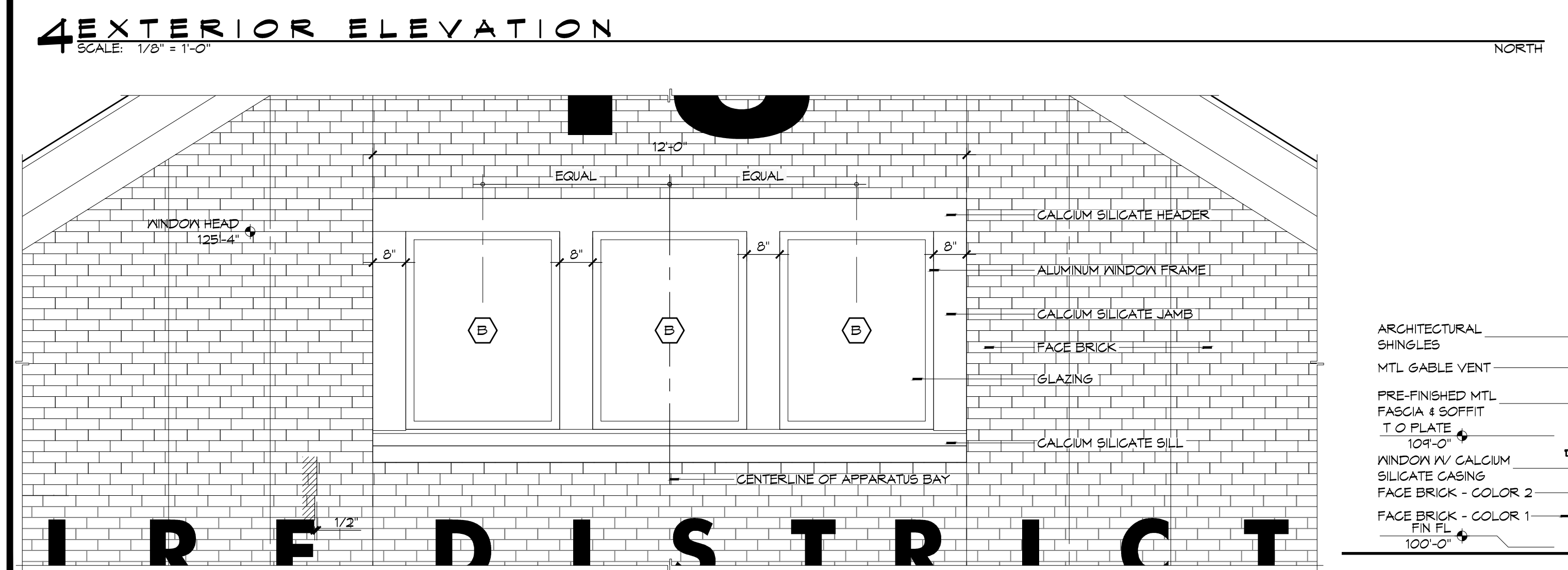
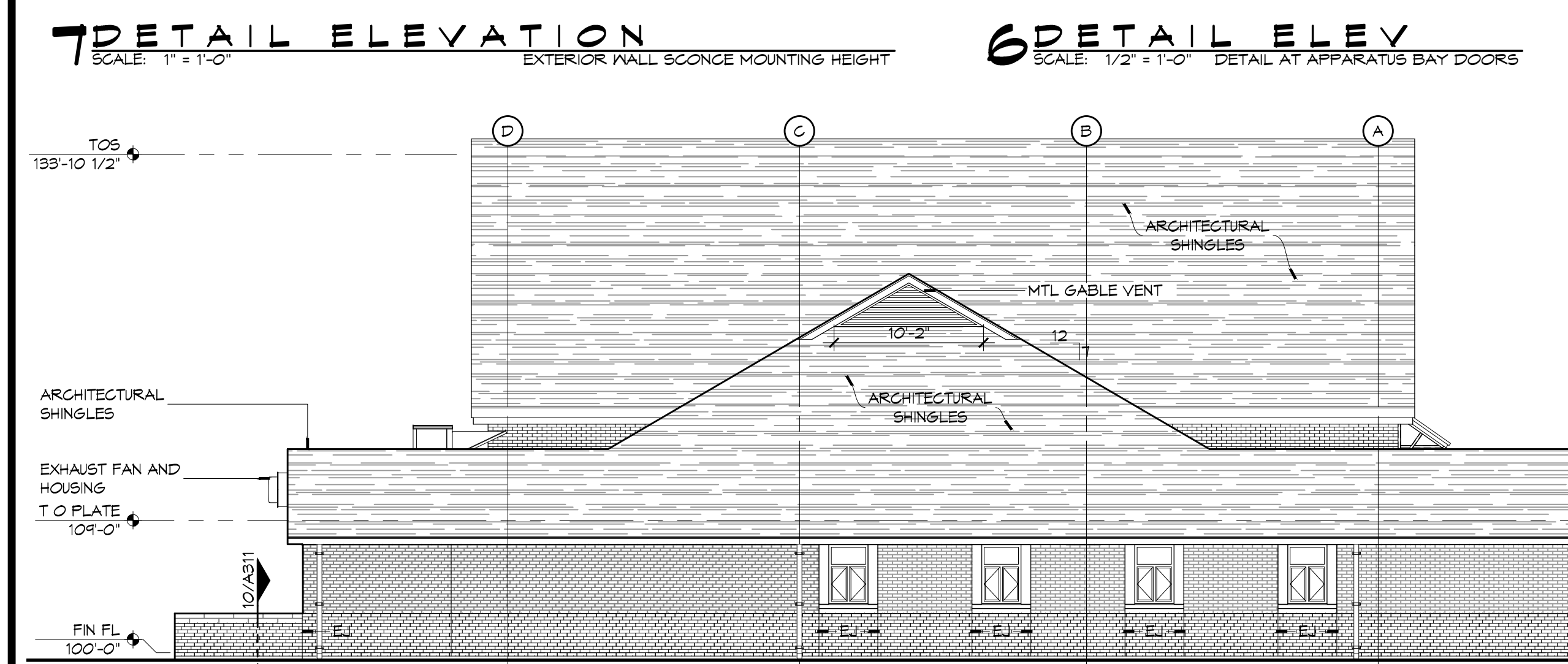
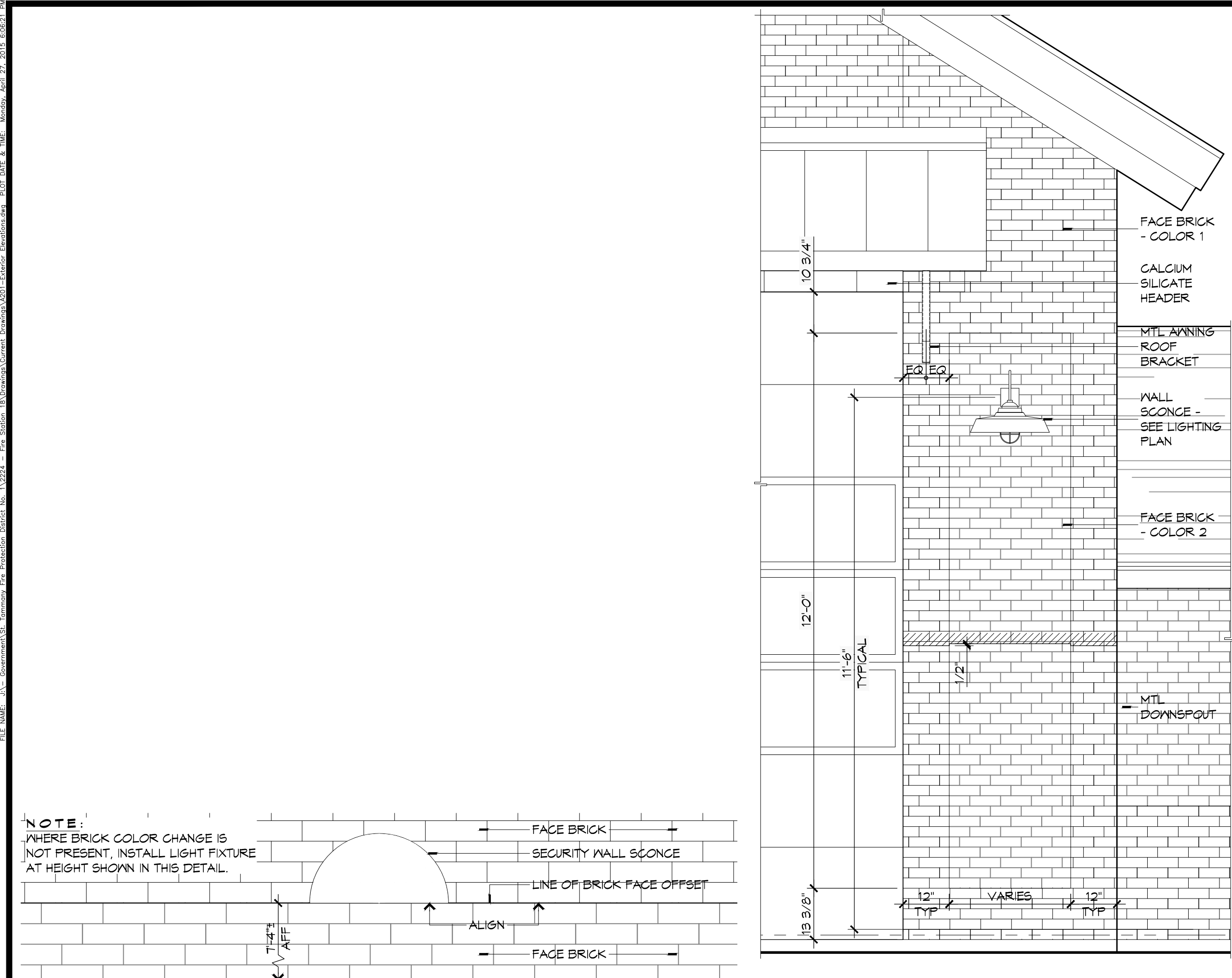


FILE NAME: A:\Projects\2015\2015-04-27\2015-04-27.dwg
 PLOT DATE: 4/27/2015 8:08:21 AM
 PLOT BY: J. K. K.



- GENERAL ELEVATION NOTES**
- REFER TO SHEET A101 FOR WINDOW TYPE ELEVATIONS.
 - WINDOW TYPES NOT INDICATED THIS SHEET ARE IDENTIFIED ON SHEET A501.
 - CONTRACTOR SHALL REVIEW LOCATIONS AND INTENT OF ALL MASONRY EXPANSION/CONTROL JOINTS WITH ARCHITECT PRIOR TO CONSTRUCTION. REFER TO ELEVATIONS FOR INDICATED JOINT LOCATIONS.
 - SEE 8/A501 FOR TYPICAL MASONRY EXPANSION JOINT DETAILS.
 - MASONRY DIMENSIONS ARE NOMINAL.
 - ALL FLASHING SHALL BE DONE IN STRICT ACCORDANCE WITH THE FLASHING MANUFACTURER'S PUBLISHED SPECIFICATIONS AND DETAILS. THIS TO INCLUDE AMOUNT OF OVERLAP AND INSTALLATION OF DRIP EDGES, IF REQUIRED.
 - LINE OF FINISH GRADE ON EXTERIOR ELEVATIONS IS APPROXIMATE AND ARE INTENDED FOR REFERENCE PURPOSES ONLY. REFER TO CIVIL GRADING PLAN FOR FINISH GRADE ELEVATIONS.
 - SEE SHEET A101 FOR EXPANSION JOINTS (EJ) IN HIDDEN LOCATIONS AND NOT SHOWN ON THIS SHEET.

DAMMON
 ENGINEERING, INC.
 Architects & Engineers
 www.dammonengineering.com
 info@dammonengineering.com
 PH: 985.649.5832
 F: 985.641.5990
 Chief Architect: Kevin J. Kinchen, NCARB
 Civil Engineer: Brian W. Minton, PE
 554 Old Spanish Trail
 Slidell, LA 70568

#	DESCRIPTION	REVISIONS	DATE

SEAL:

ST. TAMMANY FIRE PROTECTION DISTRICT NO. 1
FIRE STATION 18
 6195 AIRPORT ROAD
 SLIDELL, LOUISIANA 70460
 JOB No: 2224
 DATE: APRIL 10, 2015
 DRAWN BY: KJK
 CHECKED BY: KJK

SHEET TITLE:
 ARCHITECTURAL FLOOR
 PLAN, DETAIL FLOOR
 PLANS, AND SCHEDULES
 DRAWING NUMBER:
A201
 SHEET No: 19 of 36