

### BUILDING CODE INFORMATION

**BUILDING CODE**  
 IBC (INTERNATIONAL BUILDING CODE) 2009

**OCCUPANCY TYPE OF GROUP(S) (IBC 2009 CHAPTER 3):**  
 MERCANTILE (M)

**CONSTRUCTION TYPE(S):**  
 VB 8,000 S.F. GROSS

**MAXIMUM AREA (S.F.):**  
 MERCANTILE (M) 9,000 S.F.

**REQUIRED SEPARATION OF OCCUPANCIES (TABLE 508.2.5):**  
 N/A

**MAXIMUM AREA OF EXTERIOR WALL OPENINGS:**  
 UNLIMITED

**OCCUPANT LOAD CALCULATIONS BY OCCUPANCY:**  
 MERCANTILE (M) TOTAL = 267

**EXIT REQUIREMENTS:**  
 FIRST FLOOR - 2 EXITS

**MAXIMUM EXIT ACCESS TRAVEL DISTANCE (TABLE 1016.1):**  
 M - 200'

**MINIMUM CORRIDOR WIDTH (SECTION 1018.1 & SECTION 1005.1):**  
 44"

**MAXIMUM DEAD END CORRIDOR (SECTION 1018.4):**  
 50'

**MAXIMUM COMMON PATH OF TRAVEL (1014.3):**  
 M - 75'

**FIRE RESISTANCE RATING REQUIREMENTS FOR BLDG. ELEMENTS: (TBL 601)**  
 STRUCTURAL FRAME = 0 HRS.  
 BEARING WALLS (INTERIOR AND EXTERIOR) = 0 HRS.  
 NON-BEARING WALLS = 0 HRS.  
 FLOOR CONSTRUCTION = 0 HRS.  
 ROOF CONSTRUCTION = 0 HRS.

**FIRE ALARM SYSTEM REQUIREMENTS: (SEC 907)**  
 THIS BLDG. DOES NOT REQUIRE A FIRE ALARM SYSTEM

**FIRE PROTECTION SYSTEM REQUIREMENTS: (SEC 903)**  
 THIS BLDG. REQUIRES A FIRE PROTECTION SYSTEM IN ACCORDANCE WITH SEC 903.2.9

### LIFE-SAFETY INFORMATION

**LIFE SAFETY CODE:**  
 NFPA 101 LIFE SAFETY CODE 2009

**OCCUPANCY:**  
 MERCANTILE 8,000 S.F.

**REQUIRED SEPARATION:**  
 N/A

**CLASSIFICATION OF HAZARD OF CONTENTS:**  
 N/A

**OCCUPANT LOAD CALCULATIONS BY OCCUPANCY:**  
 MERCANTILE TOTAL = 267

**MEANS OF EGRESS:**  
 NUMBER OF EXITS - M-2  
 MINIMUM EXIT SEPARATION DISTANCE FOR REMOTELY LOCATED EXITS  
 1/3 DIAGONAL 20'0" x 28'8"  
 MAXIMUM DEAD-END CORRIDOR TRAVEL DISTANCE: 50'-0"  
 MAXIMUM COMMON PATH OF TRAVEL DISTANCE: M - 75'  
 MAXIMUM TRAVEL DISTANCE TO EXITS: M - 150'  
 STAIR WIDTH REQUIREMENTS: 44"

**HORIZONTAL EXIT:**  
 NONE

**EXTINGUISHMENT REQUIREMENTS:**  
 SPRINKLER (NOT REQUIRED)

**SUBDIVISION OF BUILDING SPACE:**  
 NONE

**DETECTION/ALARM:**  
 NONE

**EXIT REQUIREMENTS:**  
 2 EXITS

**MAXIMUM EXIT ACCESS TRAVEL DISTANCE (TABLE 1016.1):**  
 M - 200'

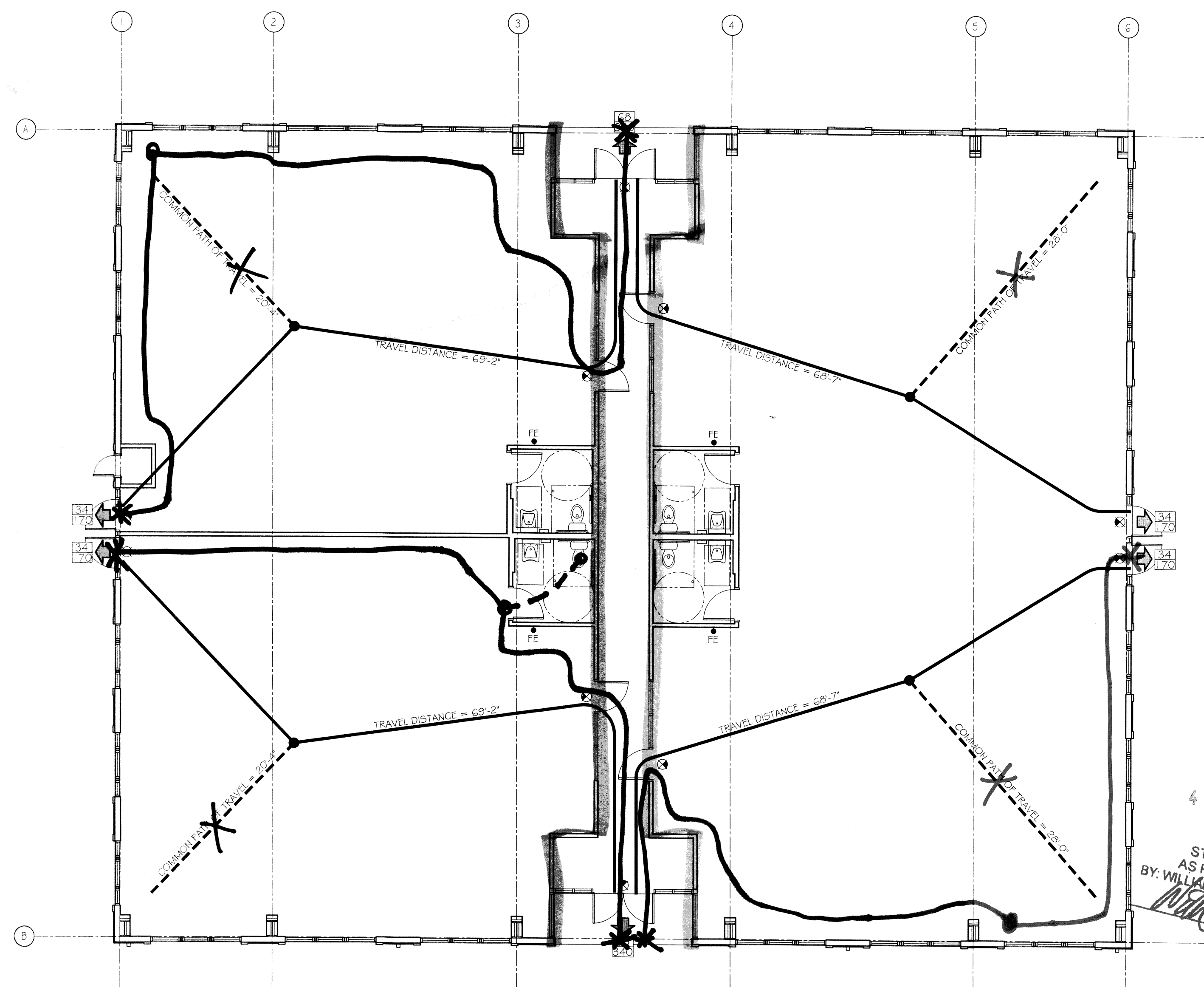
**MINIMUM CORRIDOR WIDTH (SECTION 1018.1 & SECTION 1005.1):**  
 44"

**MAXIMUM DEAD END CORRIDOR (SECTION 1018.4):**  
 20'

**MAXIMUM COMMON PATH OF TRAVEL (1014.3):**  
 M - 75'

- SYMBOLS**
- EXIT
  - DOOR FIRE RATING (MINUTES)
  - DOOR WIDTH/EGRESS CAPACITY
  - EXIT LIGHT
  - FIRE EXTINGUISHER, CABINET
  - FIRE EXTINGUISHER W/ WALL MOUNTED BRACKET
  - COMMON PATH OF TRAVEL/TRAVEL DISTANCE
  - TRAVEL DISTANCE
  - DECISION POINT

### LEGEND



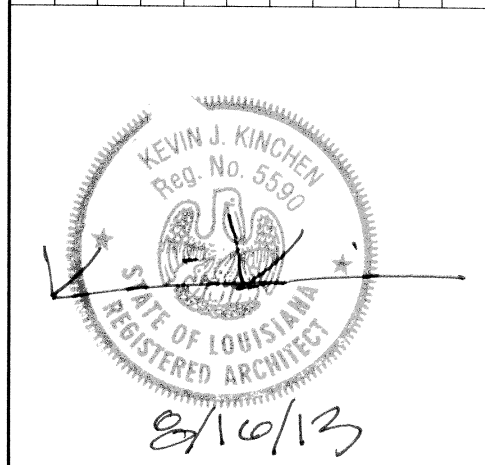
NEW COMMERCIAL BUILDING  
**DR. FARZAD ADULI**  
 LOT 288 MARGOLD DRIVE  
 COVINGTON, LA

**DAMMON ENGINEERING, INC.**  
*Architects & Engineers*

CHIEF ENGINEER: BRADLET DAMMON, P.E.  
 CHIEF ARCHITECT: KEVIN KINCHEN, NCARB  
 554 OLD SPANISH TRAIL  
 SUITE LL, LA 70458  
 PHONE: 985-641-5932  
 FAX: 985-641-5950

DATE	2/17/13	DATE: 08-16-2013	CHECKED BY: KJK
REVISIONS			
#	DESCRIPTION		

DATE	2/17/13	DATE: 08-16-2013	CHECKED BY: KJK
REVISIONS			
#	DESCRIPTION		



437655 LIFE-SAFETY PLANS  
 REVIEWED FOR STATE FIRE MARSHAL AS PER REVIEW LETTER BY WILLIAM A. EFFORD ARCHITECT  
 3 of 11  
**G2**