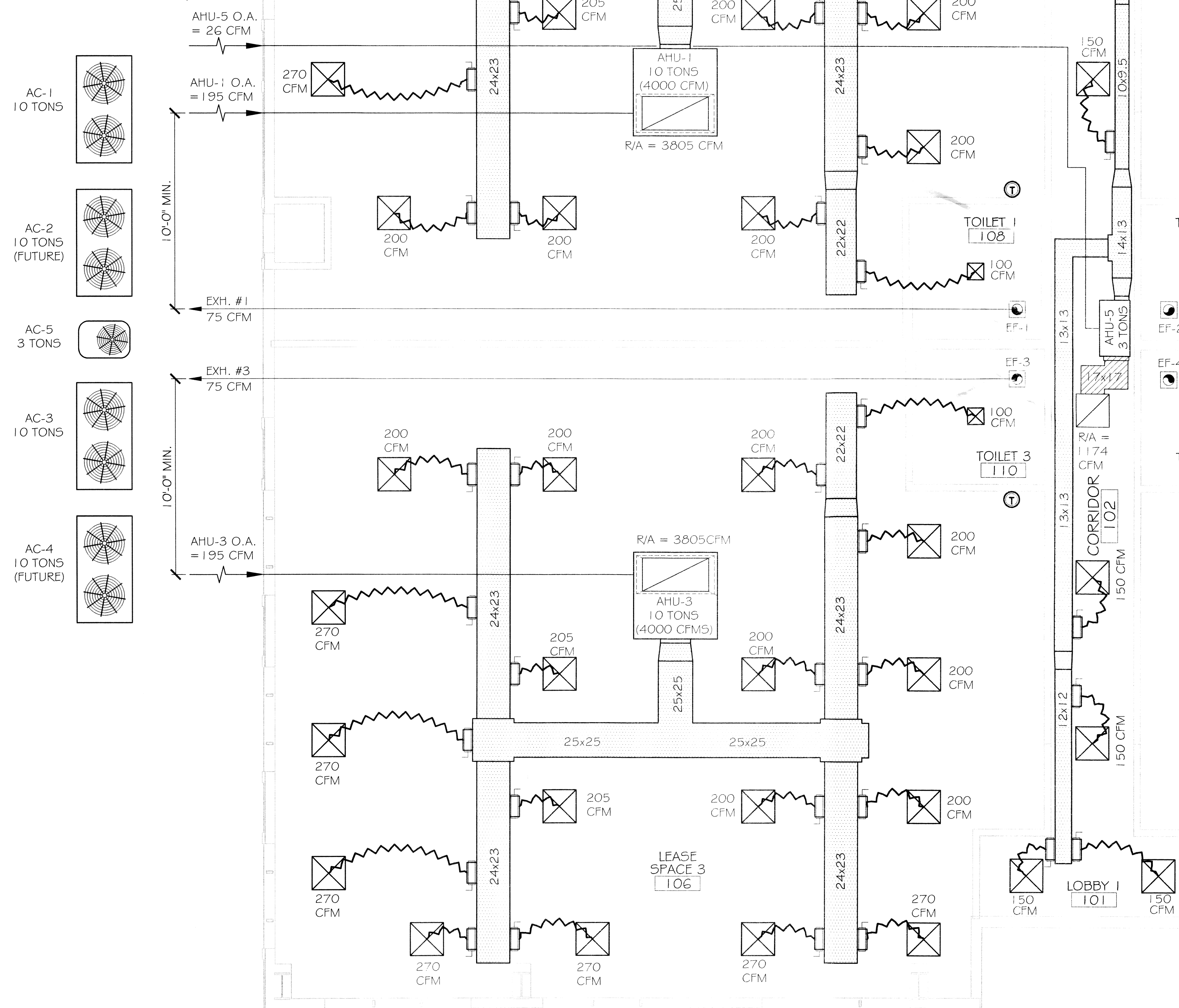


LEGEND

- SUPPLY AIR GRILLE
- RETURN AIR GRILLE
- EXHAUST FAN
- THERMOSTAT
- SUPPLY AIR DUCT
- RETURN AIR DUCT
- DAMPER
- ROUND FLEX DUCT, MAX. LENGTH 12'-0", MIN. R-G. PROVIDE MAN. DAMPER AT DIFFUSER CONNECTIONS, SIZE AS INDICATED OR: 0-200 CFM, USE 6"Ø; 201-300 CFM, USE 8"Ø; 301-400 CFM, USE 9"Ø



ZONE/ A/C #	TOTAL BTU	ELECTRICAL			COMMENTS
		VOLTAGE	MCA	CKT BRKRS	
1	20,000 10 TON LEASE SPACE 1 A/C #1	208V,3Ø	-	P1-2,4,6	NOTE: ALL A/C TO BE SPLIT- SYSTEM HVAC (YORK OR EQUAL)
2	20,000 10 TON LEASE SPACE 2 A/C #1 FUTURE	208V,3Ø	-	P1-2,4,6	
3	20,000 10 TON LEASE SPACE 3 A/C #1	208V,3Ø	-	P1-2,4,6	
4	20,000 10 TON LEASE SPACE 4 A/C #1 FUTURE	208V,3Ø	-	P1-2,4,6	
5	36,000 3 TON FOR LOBBY 101, CORRIDOR 102, & LOBBY 103 A/C #5	208V,3Ø	-	P1-2,4,6	

NO.	LOCATION	CFM	VOLTAGE	TYPE	MANF.
EF-1	TOILET 1	75	120	VENT	BROAN
EF-2	TOILET 2 (FUTURE)	75	120	VENT	BROAN
EF-3	TOILET 3	75	120	VENT	BROAN
EF-4	TOILET 4 (FUTURE)	75	120	VENT	BROAN

ZONE/ A/C #	TOTAL BTU	CFM	O.A.	HEAT (KW)	ELECTRICAL			COMMENTS
					VOLTAGE	MCA	CKT BRKRS	
1	20,000 10 TON AHU #1	4,000	195	36	208V,3Ø	-	P1-1,3,5	NOTE: ALL A/C TO BE SPLIT- SYSTEM HVAC (YORK OR EQUAL)
2	20,000 10 TON AHU #2 FUTURE	4,000	-	-	208V,3Ø	-	P1-1,3,5	
3	20,000 10 TON AHU #1	4,000	195	36	208V,3Ø	-	P1-1,3,5	
4	20,000 10 TON AHU #1 FUTURE	4,000	-	-	208V,3Ø	-	P1-1,3,5	
5	36,000 3 TON AHU #5	1,200	26	12	208V,3Ø	-	P1-1,3,5	

NOTE: MECHANICAL PLANS ARE DRAWN DIAGRAMATIC. DUCT LOCATIONS ARE FOR REFERENCE ONLY. FIELD LOCATE AS NEEDED BETWEEN JOISTS. INSTALL FIRE DAMPER AT ANY LOCATION WHERE DUCT PENETRATES A RATED WALL OR ROOF/DECK. ANY EXHAUST FAN FIXTURE INSTALLED IN A RATED CEILING WILL NEED TO BE RATED FOR THAT CEILING. COORDINATE LOCATIONS OF ALL SUPPLY AIR DIFFUSERS, RETURN AIR GRILLE, EXHAUST FANS, ETC...WITH THE LIGHTING PLAN.

REVIEWED FOR
STATE FIRE MARSHAL
AS PER REVIEW LETTER
BY: WILLIAM A. EFFERSON, ARCHITECT

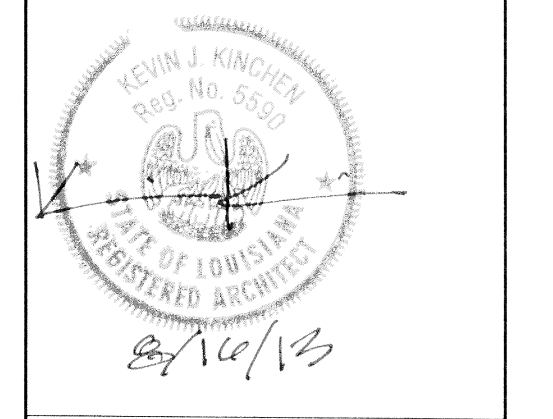
DAMMON ENGINEERING INC.
Architects & Engineers

CHIEF ENGINEER: EMETT DAMMON, P.E.
CHIEF ARCHITECT: KEVIN KINCHEN, NCARB
564 OLD SPANISH TRAIL
SUITE 200
BUDA, TX 78610
PHONE: 512-835-6452
FAX: 512-835-6453

NEW COMMERCIAL BUILDING
DR. FARZAD ADULI

LOT 288 MARGOLD DRIVE
COVINGTON, LA
JOB No: 2178
DATE: 08-16-2013
DRAWN BY: BSN
CHECKED BY: BSN

#	DESCRIPTION	DATE



MECHANICAL PLAN

SHEET No: 11 of 11

MI