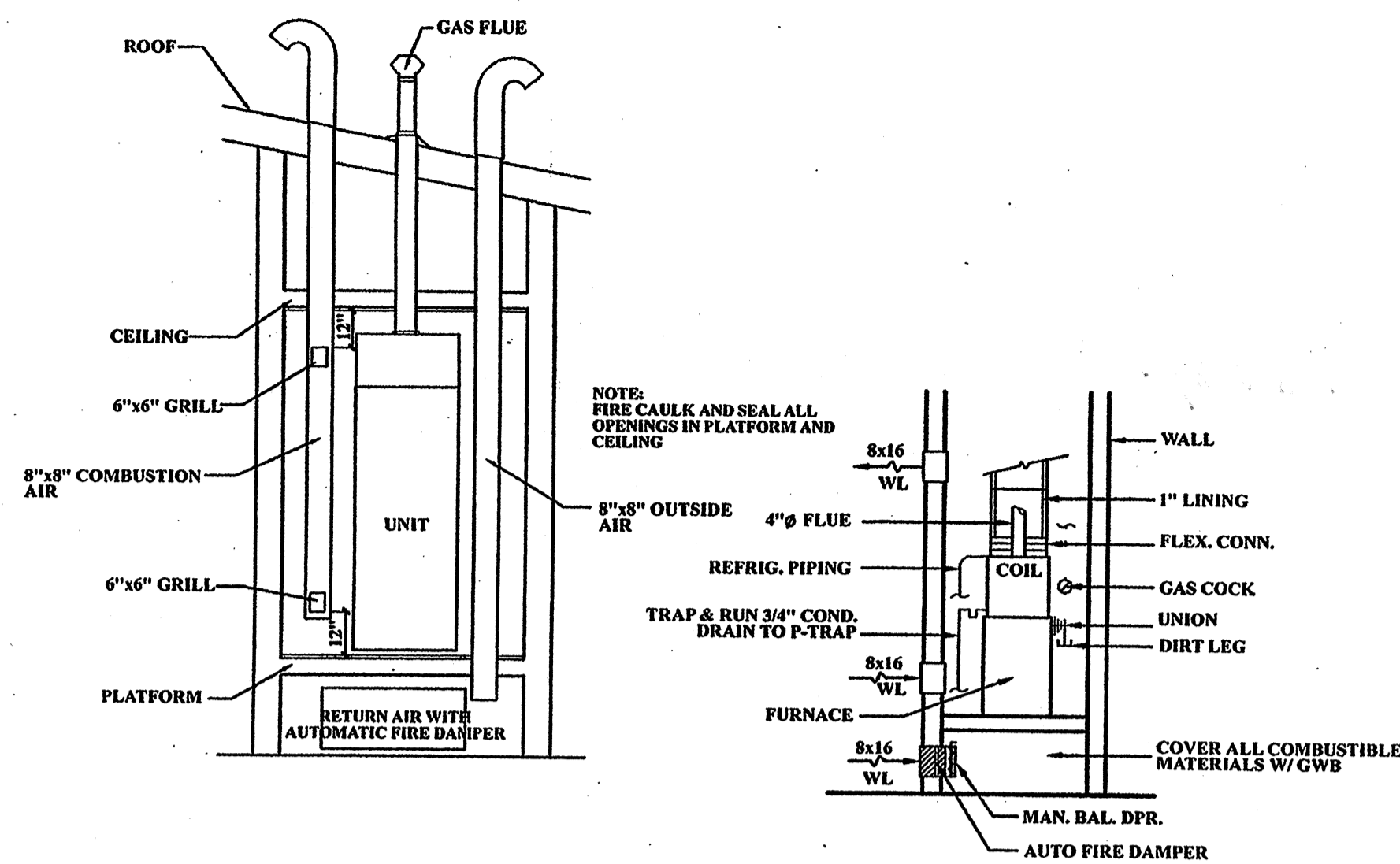


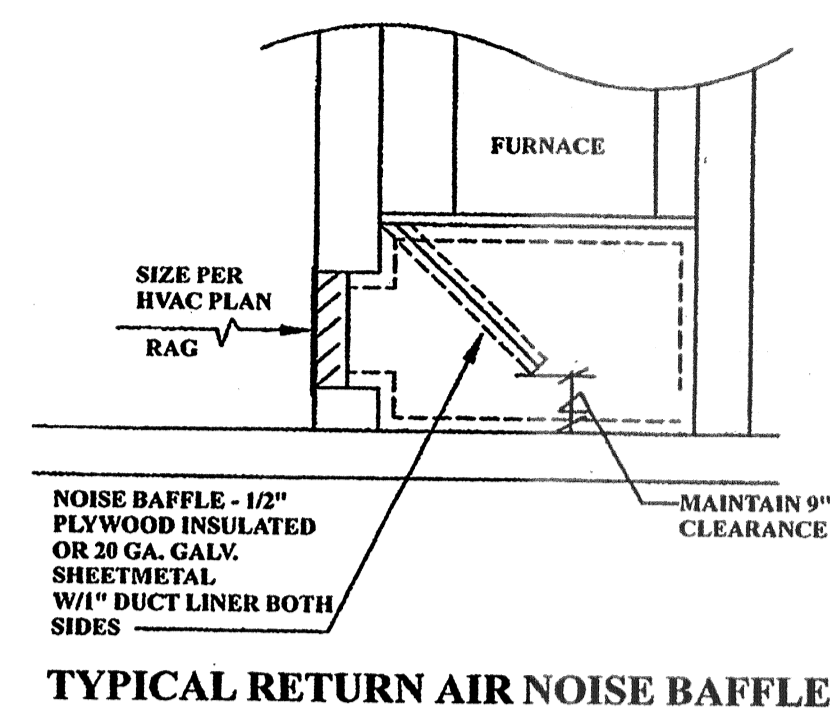
**HVAC DETAIL NOTES:**

1. EXISTING EXTERIOR WALL.
2. EXISTING FLOOR SYSTEM.
3. FINISHED CEILING-REFER TO ARCHITECTURAL DRAWINGS FOR HEIGHTS.
4. INSULATED SUPPLY DUCT.
5. INSULATED SUPPLY DUCT MAIN DUCT.
6. 5/8" FIRE RATED GYPSUM BOARD ALL WALLS AND CEILINGS OF HVAC CLOSET.
7. FLEXIBLE CONNECTION.
8. FRAMED DOOR OPENING OF HVAC CLOSET.
9. HVAC CLOSET DOOR.
10. VERTICAL AIR HANDLER.
11. COIL UNIT-FULL CASED MULTI-POSITION TYPE.
12. 1/2" CONDENSATION DRAIN LINE WITH "P" TRAP. CONNECT TO EITHER HOUSE.
13. 20 GA. GALV. SHEET METAL OVER PLYWOOD PLATFORM.
14. SMOKE DETECTOR OR FIRESTAT AS SPECIFIED.
15. 2"x4" BLOCKING UNDER UNIT TO ALLOW TRAPPING FOR CONDENSATE DRAIN.
16. 2"x4" PLATFORM FRAMING WITH 1/2" PLYWOOD TOP.
17. RETURN AIR WALL GRILL-REFER TO DRAWINGS FOR SIZE.
18. LINE RETURN AIR PLENUM WITH 1" ACOUSTIC DUCT LINER.
19. 8"x16" OUTSIDE AIR (OSA) ALUMINUM WALL GRILL WITH INSECT SCREEN EQUAL TO RUSKIN MODEL ELF-211 OR EQUAL.
20. AUTOMATIC FIRE DAMPER (AFD).
21. MANUAL DAMPER.
22. SHEET METAL SLEEVE.
23. FILTER.
24. METAL WALL SLEEVE WITH SEALANT.
25. ANGLE 3/4"x4" OVER LOUVER OPENING WITH THRU-WALL FLASHING.
26. SEAL ALL WALL PENETRATIONS BY DUCTWORK.
27. REFRIGERANT LINES-SIZE PER MANUFACTURER'S SPECIFICATION. INSULATE ALL LINES.
28. NOISE Baffle-1/2" PLYWOOD WITH 1" DUCT LINER BOTH SIDES.
29. RETURN AIR PLENUM.

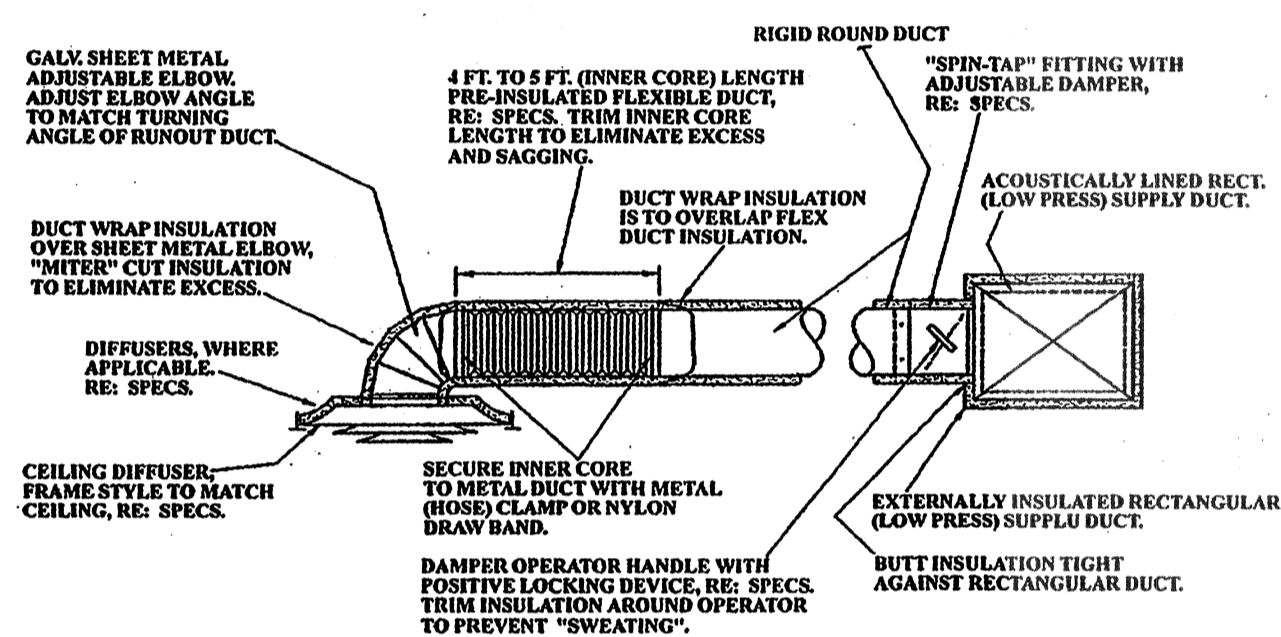
**TYPICAL HVAC VERTICAL UNIT ON EXTERIOR WALL DETAIL**



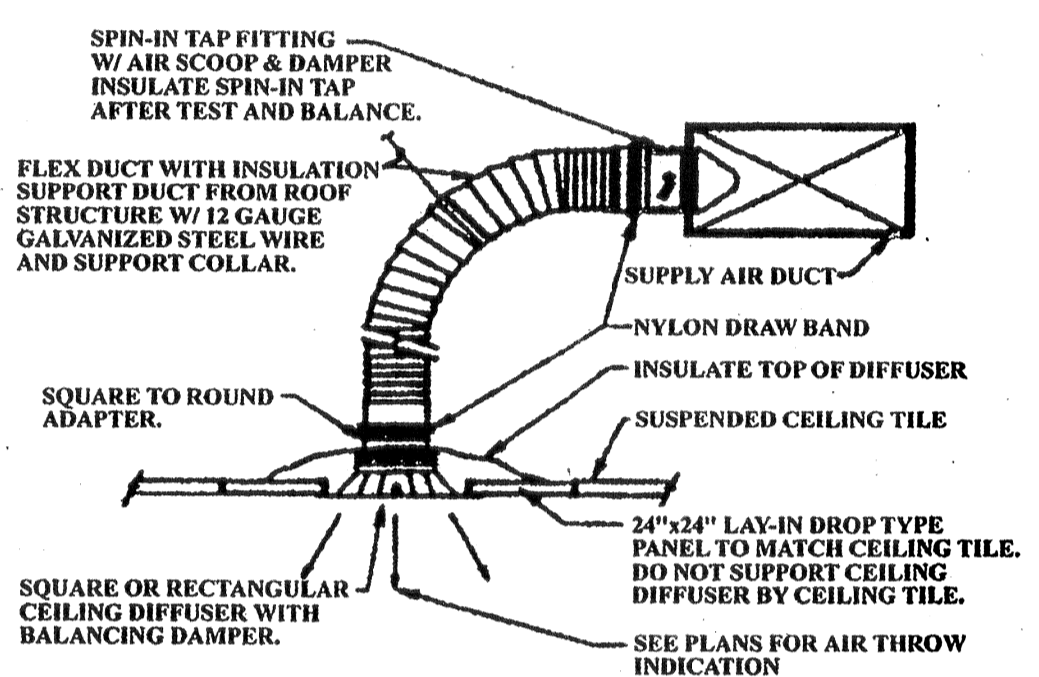
**TYPICAL GAS FIRE CLOSET UNIT DETAIL**



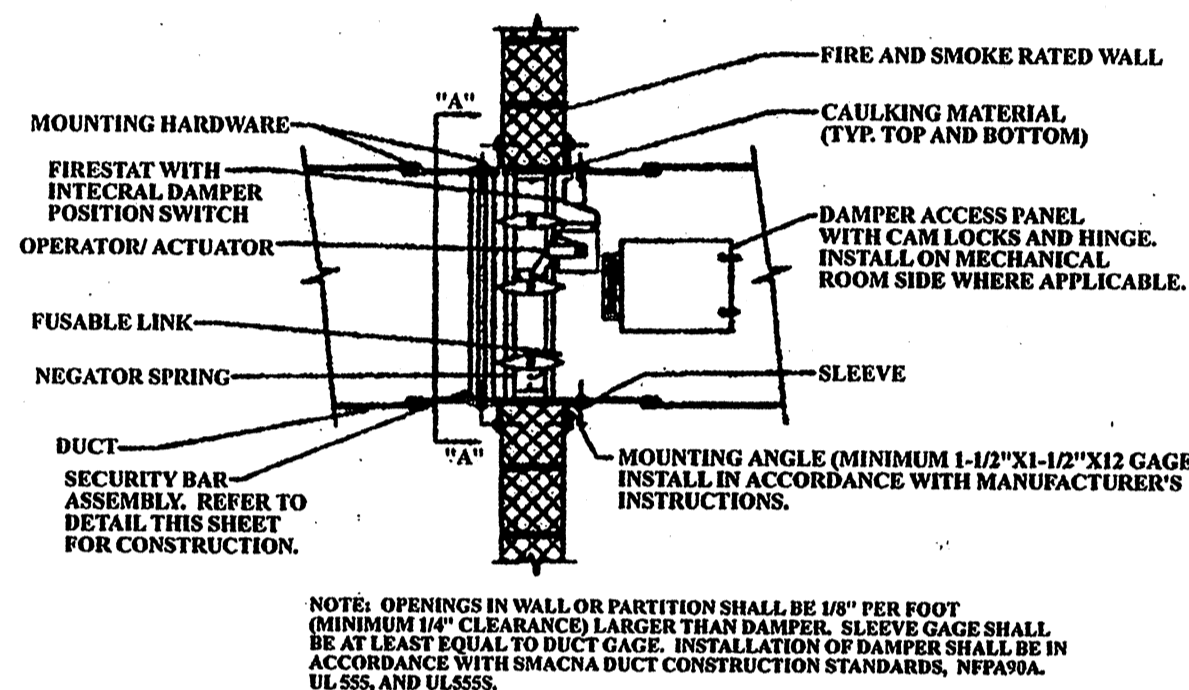
**TYPICAL RETURN AIR NOISE Baffle**



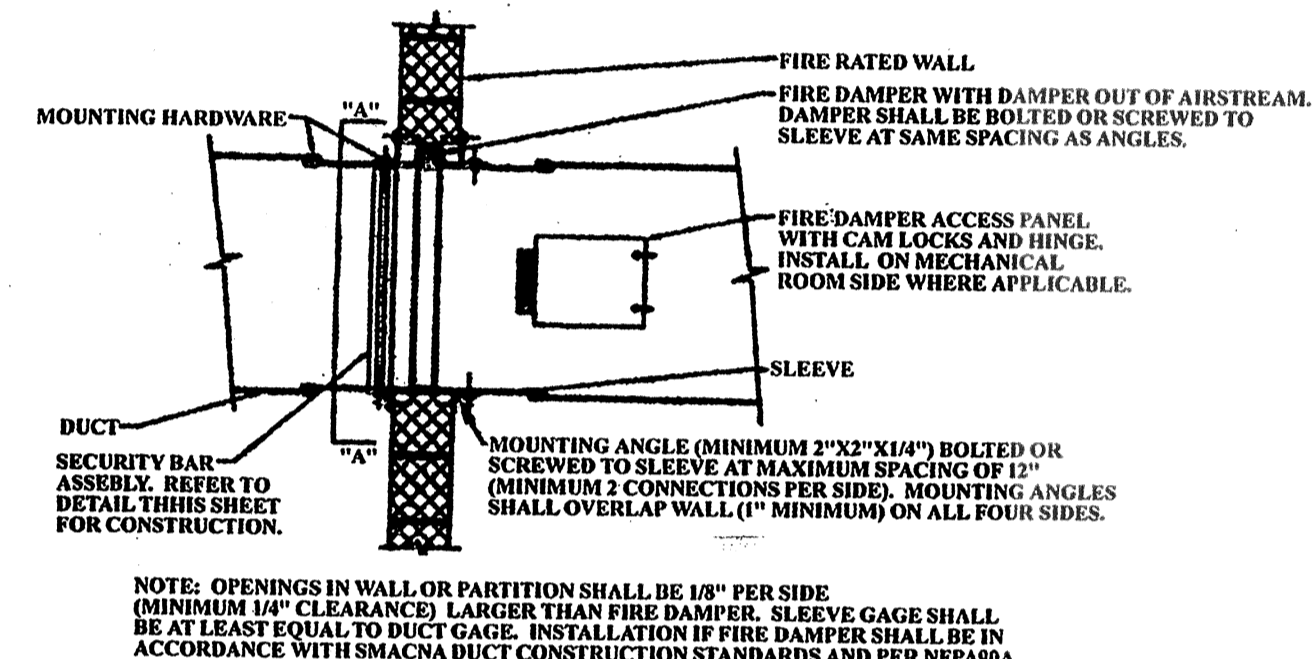
**ROUND DUCT BRANCH RUNOUT CONNECTION DETAIL**



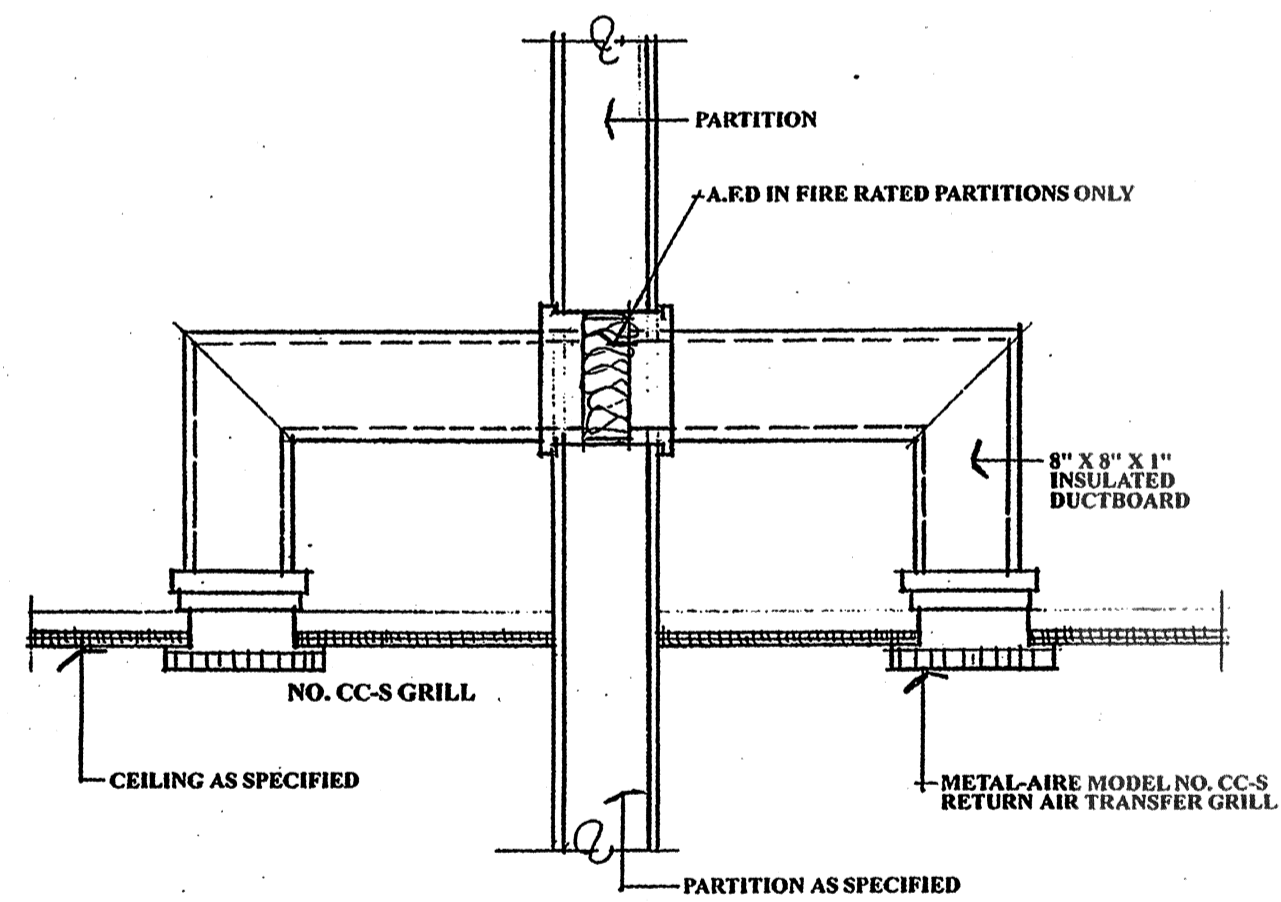
**TYPICAL LAY-IN CEILING DIFFUSER DETAIL**



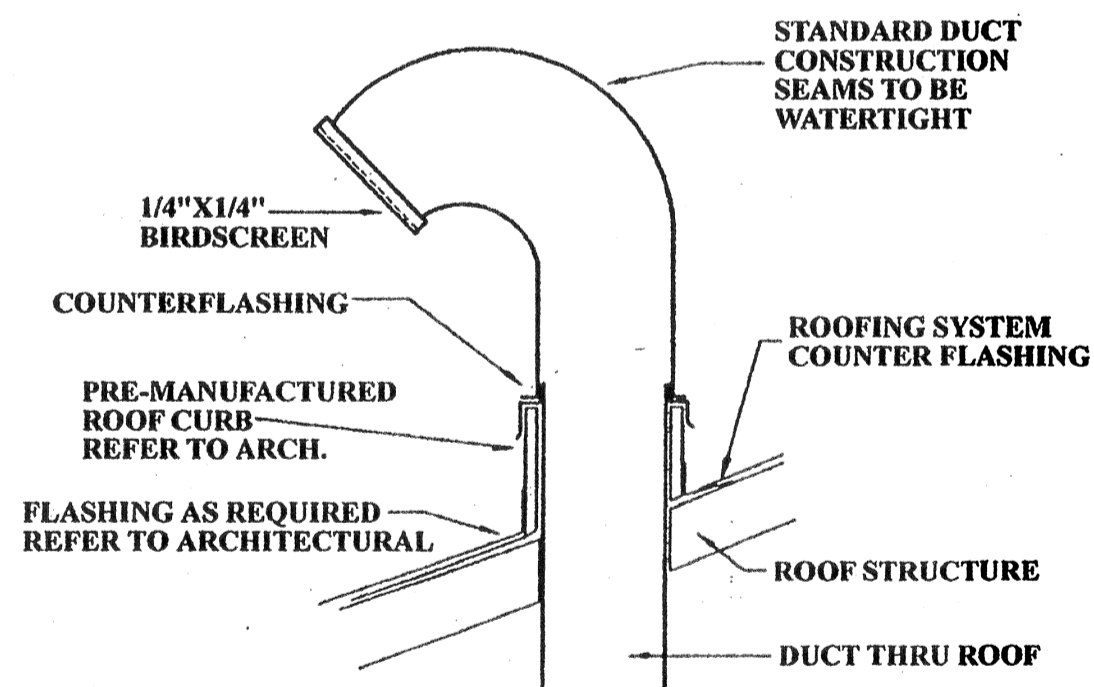
**COMBINATION FIRE/SMOKE DAMPER DETAIL**



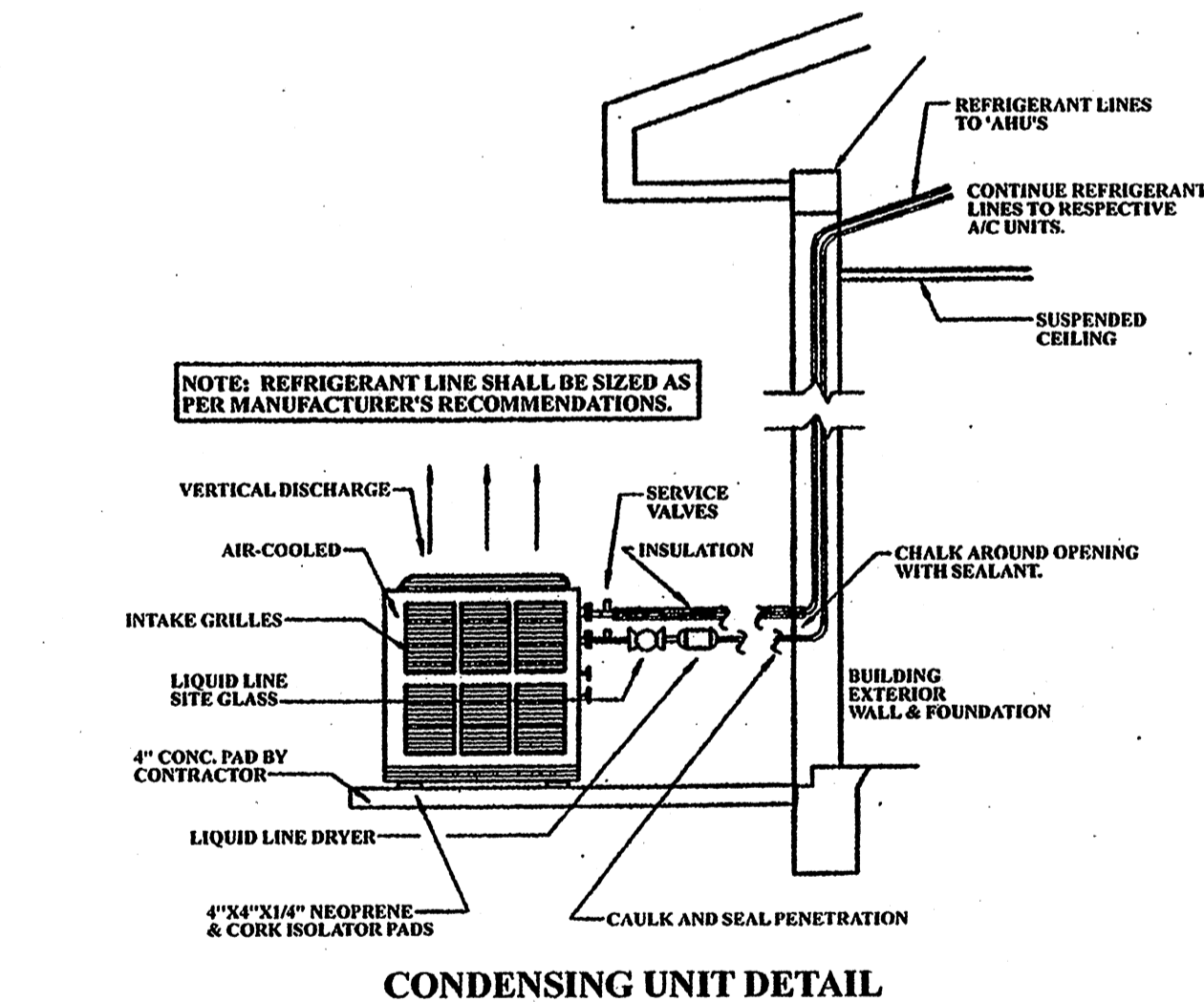
**TYPICAL VERTICAL FIRE DAMPER DETAIL**



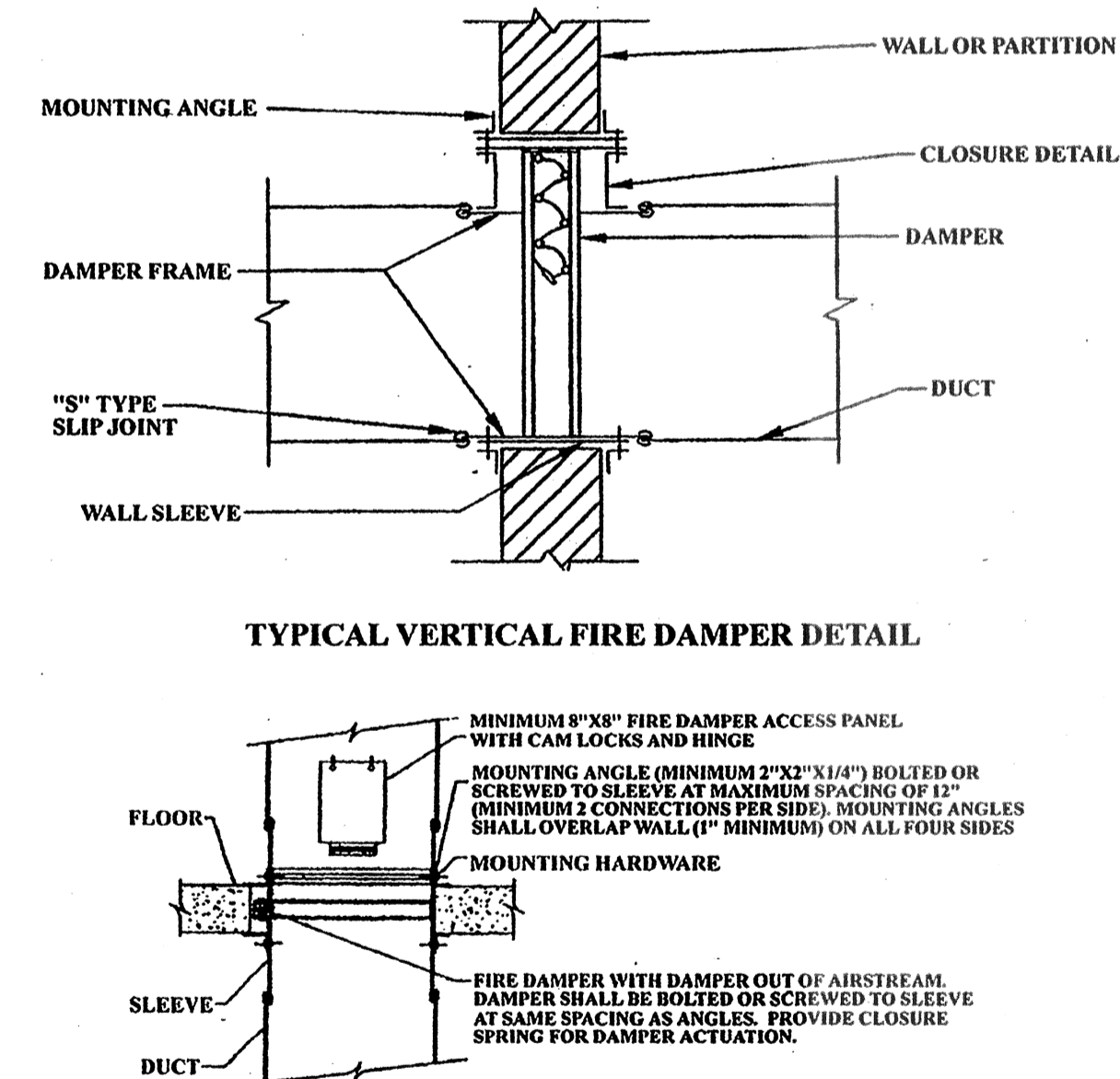
**CEILING RETURN-AIR TRANSFER DETAIL**



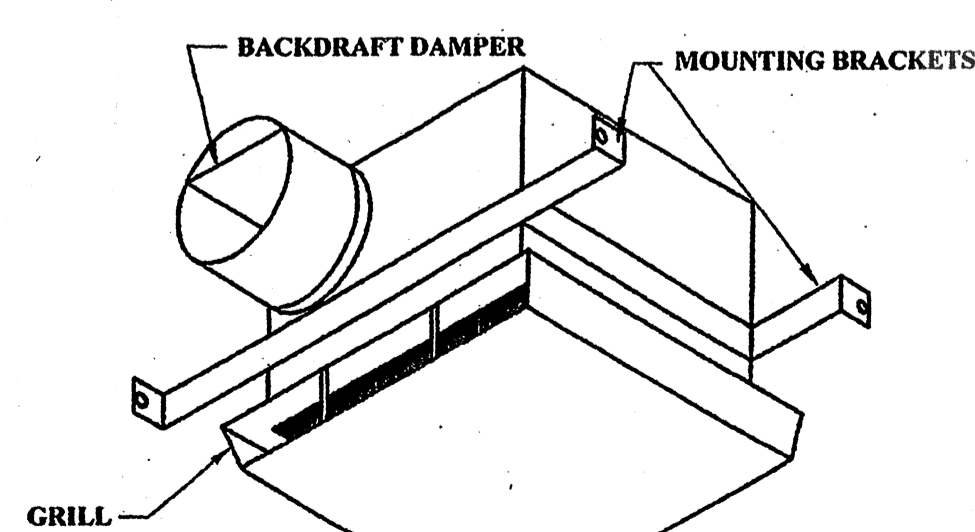
**GOOSENECK DETAIL - SLOPED ROOF**



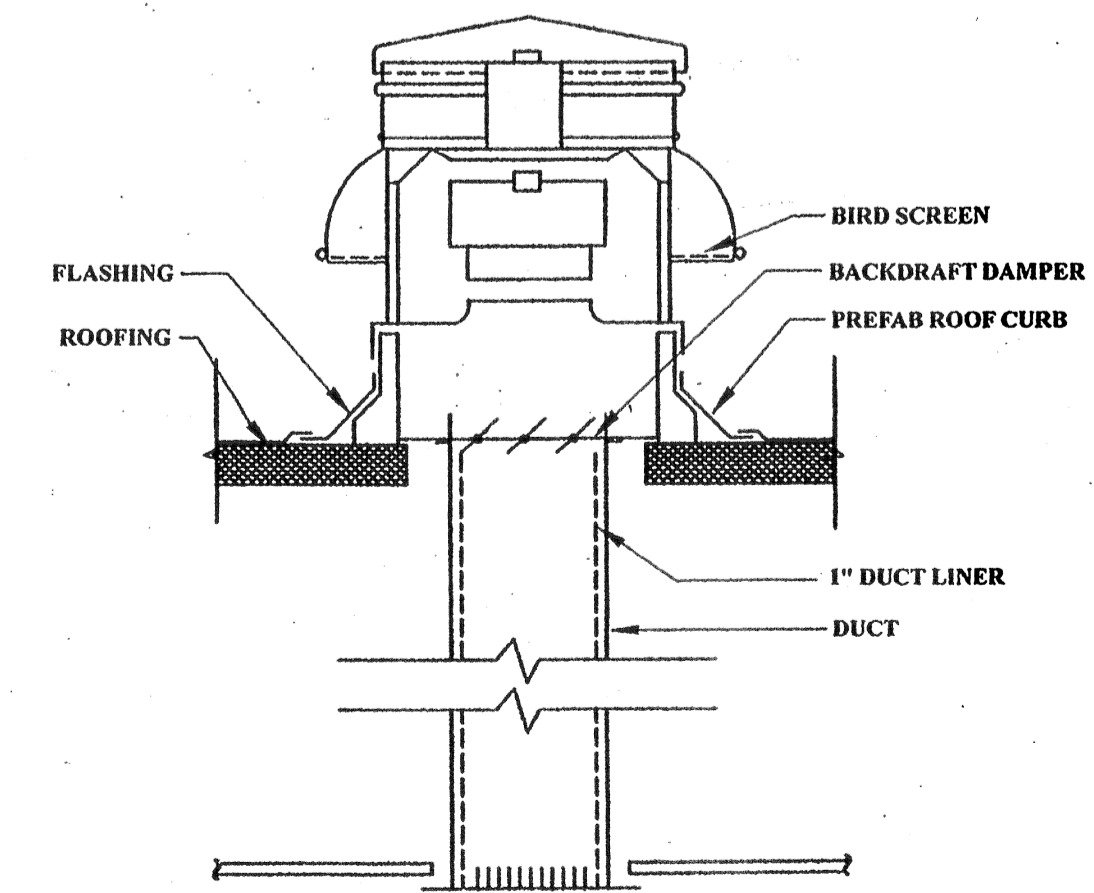
**CONDENSING UNIT DETAIL**



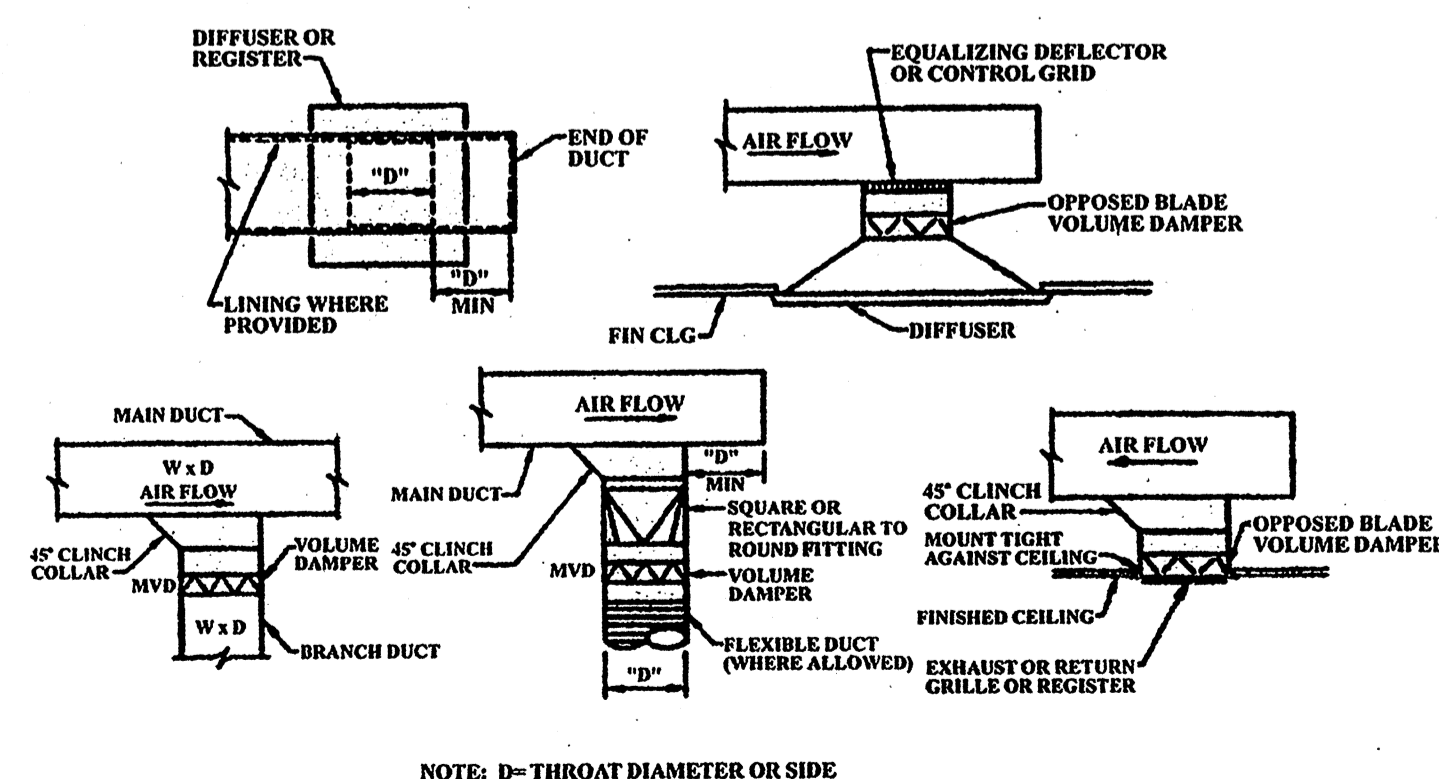
**TYPICAL VERTICAL FIRE DAMPER DETAIL**



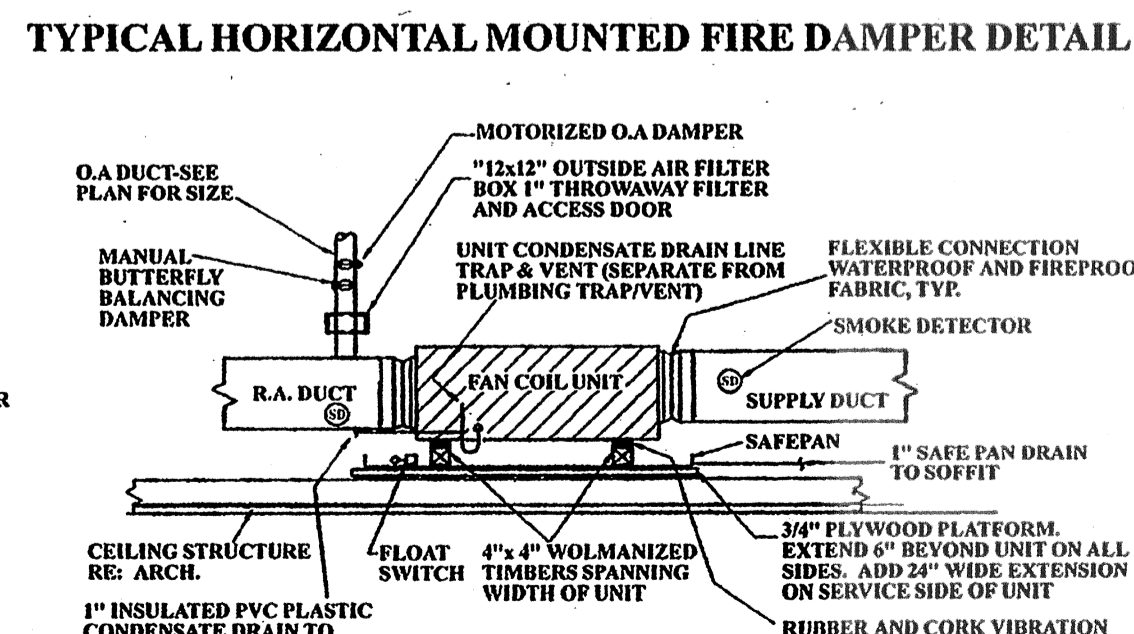
**CEILING MOUNTED EXHAUST FAN**



**ROOF MOUNTED EXHAUST FAN DETAIL**



**TYPICAL HARD DUCT TO AIR DEVICE CONNECTION DETAILS**



**HORIZONTAL FAN COIL UNIT DETAIL**

REVISIONS	BY

**TYPICAL MECHANICAL DETAILS**

**JOSEPH F. SCHNEIDER, JR. AIA**  
architect  
105 Evangeline Drive Slidell, Louisiana 70460 (985) 847-0714

DRAWN	SCHNEIDER
CHECKED	
DATE	MAY 18 06
SCALE	AS NOTED
JOB NO.	000
SHEET	
<b>ME-3</b>	
OF	SHEETS