

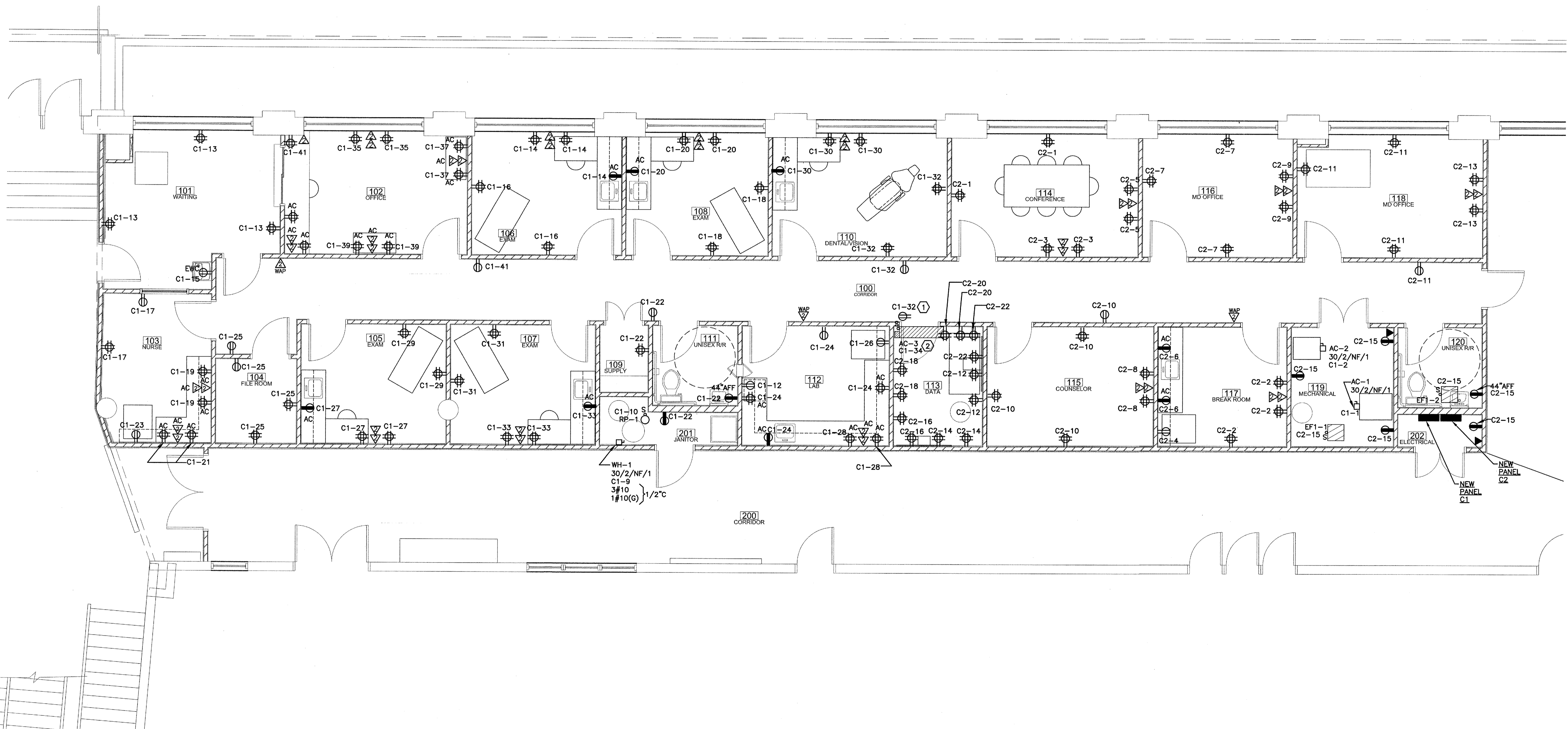
ALL DESIGN, SPECIFICATIONS, DRAWINGS, AND SPECIFICATIONS ARE OWNED BY AND ARE THE PROPERTY OF MOSES ENGINEERS CONSULTING ENGINEERS AND SHALL REMAIN THE PROPERTY OF MOSES ENGINEERS CONSULTING ENGINEERS. THESE DOCUMENTS ARE NOT TO BE REPRODUCED, COPIED, OR USED IN ANY MANNER WITHOUT THE WRITTEN PERMISSION OF MOSES ENGINEERS CONSULTING ENGINEERS. THESE DOCUMENTS ARE NOT TO BE USED FOR ANY PURPOSE OTHER THAN THAT SPECIFICALLY INTENDED FOR THE SAME USE AS INDICATED ON THESE DOCUMENTS.

MCMAIN HEALTH CLINIC RENOVATION
AT
ELEANOR MCMAIN SECONDARY HIGH SCHOOL
5712 SOUTH CLAIBORNE AVENUE
NEW ORLEANS, LOUISIANA 70125

STAMP:
STATE OF LOUISIANA
L.C. ZIMMERMANN
REG. NO. 16249
REGISTERED PROFESSIONAL ENGINEER
ELECTRICAL ENGINEERING
S/11/12

REVISION(S):

CONTRACTOR MUST VERIFY AND CHECK ALL JOB DIMENSIONS, DETAILS, AND SPECIFICATIONS ON SITE AND REPORT ANY ERRORS, OMISSIONS, OR DISCREPANCY TO THE ARCHITECT IN WRITING BEFORE PROCEEDING WITH WORK.
DRAWN BY:
CHECKED BY: BPO DATE: 05/11/12
DATE:
JOB NO: 1007B
SHEET NO: E-3.01



1 FIRST FLOOR PLAN - POWER
SCALE: 1/4" = 1' - 0"

- REFERENCE NOTES**
- ① RECEPTACLE FOR CONDENSATE PUMP. VERIFY FINAL LOCATION IN CEILING WITH MECHANICAL.
 - ② ROUTE TO CONDENSING UNIT ON ROOF THAT SERVES ROOM. VERIFY REQUIREMENTS WITH MECHANICAL.

BUILDING LEGEND

[Pattern]	MCMAIN HEALTH CENTER RENOVATION PROJECT LOCATION
[Pattern]	EXISTING MCMAIN SECONDARY HIGH SCHOOL
[Pattern]	NEW GYMNASIUM ADDITION & COVERED WALKWAY (CONCURRENT PROJECT)
[Pattern]	EXISTING MCMAIN HEALTH CENTER

