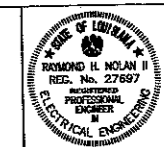


**OPERATING ROOM
RENOVATIONS**

**ST. TAMMANY PARISH
HOSPITAL**

1202 SOUTH TYLER STREET
COVINGTON, LOUISIANA 70433



THESE DRAWINGS ARE THE SOLE PROPERTY OF FAUNTLEROY LATHAM WELDON BARRÉ ARCHITECTS, APC, AND ARE ISSUED AS INSTRUMENTS OF SERVICE. THESE DRAWINGS SHALL NOT BE COPIED, REPRODUCED OR USED IN ANY MANNER WITHOUT WRITTEN CONSENT OF FAUNTLEROY LATHAM WELDON BARRÉ ARCHITECTS, APC.

Issue	Date	Remark

SYMBOL LIST
LIGHTING FIXTURE SCHEDULE

CONSTRUCTION DOCUMENT

Job No.	212001.01	Sheet No.	
Drawn by	ERS	E1.0	
Checked by	KDS		
Date	29 FEB. 12		

ELECTRICAL SYMBOLS		DESCRIPTION
CEILING	WALL	
□	□	FLUORESCENT FIXTURE
□	□	LIGHT FIXTURE - POLE MOUNTED
⊙	⊙	EXIT LIGHT. SHADING DENOTES SIDE WITH FACE.
⊙	⊙	LIGHT FIXTURE - WALL WASHER
— —	— —	LIGHT FIXTURE FLUORESCENT STRIP
⊙	⊙	EMERGENCY LIGHT FIXTURE
⊙	⊙	EMERGENCY LIGHT - BATTERY UNIT
⊙	⊙	JUNCTION BOX 4"
⊙	⊙	SINGLE RECEPTACLE 20 AMP, 2 POLE, 3W, 120V, GROUNDING TYPE
⊙	⊙	SAME AS ABOVE, MOUNTED ABOVE COUNTER
⊙	⊙	DUPLEX RECEPTACLE 15 AMP, 2 POLE, 3W, 120V GROUNDING TYPE
⊙	⊙	SINGLE RECEPTACLE, 20AMP, 2 POLE, 3W, 250V, GROUNDING TYPE (SUFFIX INDICATES AMPERAGE WHEN MORE THAN 20A)
⊙	⊙	DUPLEX RECEPTACLE, 20 AMP, 2 POLE, 3W, 120V, GROUNDING DEDICATED CIRCUIT (SUFFIX INDICATES AMPERAGE WHEN MORE THAN 20A)
⊙	⊙	SAME AS ABOVE, MOUNTED ABOVE COUNTER
⊙	⊙	QUADRUPLEX RECEPTACLE (2 DUPLEX RECEPTACLES WITH SINGLE COVER PLATE)
⊙	⊙	QUADRUPLEX RECEPTACLE MOUNTED ABOVE COUNTER (2 DUPLEX RECEPTACLES WITH SINGLE COVER PLATE)
⊙	⊙	DUPLEX RECEPTACLE, 15 AMP, 2 POLE, 3W OR TYPE (GROUND FAULT INTERRUPTER)
⊙	⊙	DUPLEX RECEPTACLE, 15 AMP, 2 POLE, 3W ISOLATED GROUND TYPE
⊙	⊙	STANDARD OCCUPANCY SENSOR (WALL MOUNTED)
⊙	⊙	STANDARD OCCUPANCY SENSOR (CEILING MOUNTED)
⊙	⊙	DUAL RELAY OCCUPANCY SENSOR (WALL MOUNTED) (FOR DUAL LEVEL SWITCHING)
⊙	⊙	ULTRASONIC OCCUPANCY SENSOR (CEILING, CORNER, WALL MOUNTED)
⊙	⊙	POWER PACK RELAY, DUAL VOLTAGE (MOUNTED IN ACCESSIBLE CEILING SPACE, UNLESS NOTED OTHERWISE)
⊙	⊙	DUAL TECHNOLOGY OCCUPANCY SENSOR (CEILING, CORNER, WALL MOUNTED)
⊙	⊙	AUTOMATIC CONTROL SWITCH (CEILING, CORNER, WALL MOUNTED)
⊙	⊙	DIGITAL TIMER SWITCH
⊙	⊙	LOW VOLTAGE SWITCH
⊙	⊙	SUFFIX: EXISTING TO REMAIN
⊙	⊙	SUFFIX: EXISTING TO BE REMOVED
⊙	⊙	WEATHERPROOF
⊙	⊙	CONDUIT ONLY
⊙	⊙	ELECTRIC WATER COOLER
⊙	⊙	TYPICAL
⊙	⊙	ABOVE FINISHED FLOOR
⊙	⊙	FLUSH SURFACE
⊙	⊙	LIGHTING AND APPLIANCE PANELBOARD
⊙	⊙	DISTRIBUTION PANELBOARD OR SWITCHBOARD
⊙	⊙	TELEPHONE BACKBOARD
⊙	⊙	SPECIAL CABINET AS NOTED

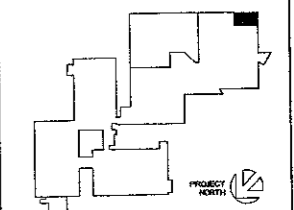
ELECTRICAL SYMBOLS		DESCRIPTION
⊙	⊙	TRANSFORMER
⊙	⊙	FLOOR BOX WITH 15A DUPLEX RECEPTACLE (SUFFIX INDICATES AMPERAGE WHEN MORE THAN 15A)
⊙	⊙	MULTI-SERVICE FLOOR BOX
⊙	⊙	MOTOR (NUMERAL INDICATES H.P.)
⊙	⊙	COMBINATION MAGNETIC STARTER & DISCONNECT SWITCH
⊙	⊙	MAGNETIC STARTER (FVNR)
⊙	⊙	ENCLOSED CIRCUIT BREAKER
⊙	⊙	DISCONNECT SWITCH - SIZE/POLES/FUSE/NEMA TYPE
⊙	⊙	LIGHTING CONTACTOR
⊙	⊙	SINGLE POLE TOGGLE SWITCH. (SUBSCRIPT DENOTES FIXTURE CONTROLLED)
⊙	⊙	THREE WAY TOGGLE SWITCH. (SUBSCRIPT DENOTES FIXTURE CONTROLLED)
⊙	⊙	FOUR WAY TOGGLE SWITCH. (SUBSCRIPT DENOTES FIXTURE CONTROLLED)
⊙	⊙	MANUAL STARTER WITH THERMAL OVERLOAD ELEMENT
⊙	⊙	TOGGLE SWITCH WITH PILOT LIGHT
⊙	⊙	SINGLE POLE SWITCH KEY OPERATED
⊙	⊙	WALL BOX DIMMER SWITCH. (SUBSCRIPT DENOTES FIXTURE CONTROLLED)
⊙	⊙	PUSH BUTTON STATION
⊙	⊙	PULL BOX
⊙	⊙	CROSSHATCHING INDICATES EQUIP. DISCONNECTION AND REMOVAL
⊙	⊙	MULTI-OUTLET ASSEMBLY (PLUG STRIP)
⊙	⊙	CIRCUIT WIRING IN CONDUIT (CONCEALED). TICK MARKS DENOTE QUANTITY OF PHASE AND NEUTRAL CONDUCTORS. CONDUIT IS TO INCLUDE AN EQUIPMENT GROUND WIRE SIZED PER NEC (NOT SHOWN), UNLESS NOTED OTHERWISE. NO MARKS INDICATE 2#12, 1#12 GROUND, 1/2" CONDUIT.
⊙	⊙	CONDUIT IN OR UNDER FLOOR SLAB, OR UNDERGROUND.
⊙	⊙	CONDUIT EXPOSED
⊙	⊙	EXISTING CONDUIT TO REMAIN
⊙	⊙	EXISTING CONDUIT TO BE REMOVED
⊙	⊙	CABLE TRAY
TELECOMMUNICATIONS		
⊙	⊙	COMMUNICATION OUTLET
⊙	⊙	WALL MOUNTED COMMUNICATION OUTLET, +54" AFF
⊙	⊙	COMMUNICATION OUTLET MOUNTED ABOVE COUNTER
⊙	⊙	T.V. OUTLET
⊙	⊙	SOUND SYSTEM SPEAKER
⊙	⊙	CLOCK (MASTER CLOCK SYSTEM)
FIRE ALARM SYSTEM		
⊙	⊙	MANUAL PULL STATION
⊙	⊙	SPEAKER ONLY
⊙	⊙	STROBE ONLY (SUBSCRIPT DENOTES CANDELA OF STROBE)
⊙	⊙	HORN/STROBE (SUBSCRIPT DENOTES CANDELA OF STROBE)
⊙	⊙	SPEAKER/STROBE (SUBSCRIPT DENOTES CANDELA OF STROBE)
⊙	⊙	SMOKE DETECTOR
⊙	⊙	THERMAL DETECTOR
⊙	⊙	DUCT MOUNTED SMOKE DETECTOR
⊙	⊙	DUCT DETECTOR REMOTE INDICATOR LIGHT
⊙	⊙	MAGNETIC DOOR HOLDER-PROVIDE 120V-1P RELAY W/24V COIL
⊙	⊙	FLOW SWITCH
⊙	⊙	TAMPER SWITCH
⊙	⊙	OS & Y VALVE
NURSE CALL SYSTEM		
⊙	⊙	CODE BLUE STATION
⊙	⊙	STAFF STATION
⊙	⊙	DOME LIGHT

LIGHTING FIXTURE SCHEDULE							
TYPE	REMARKS	CATALOG NO.	MOUNTING	LAMPS			
				QTY	TYPE	TOTAL WATTS	NOTES
F1	DOWNLIGHTS	GOTHAM AFV-26DTT-6AR-MVOLT	RECESS	1	26DTT	33	3500K
F2	PERIMETER LIGHTS	FOCAL POINT FW2-PL-2TB-1C-277-E-RC-SERIES	RECESS	VARIES	F32TB	VARIES	3500K
F3	SURGICAL LIGHTS	HEALTHCARE HST124-F-UNV-TBPK-3C-RS-PL-GPL-AM	RECESS	6	F32TB	177	3500K
F4	SURGICAL LIGHTS	HEALTHCARE HST122-F-UNV-TBPK-3C-RS-PL-GPL-AM	RECESS	6	F17TB	99	3500K
F5	SURGICAL LIGHTS	HEALTHCARE HST124-F-UNV-TBPK-2C-RS-PL-GPL-AM	RECESS	4	F32TB	118	3500K
F6	STERILE CORE	HEALTHCARE HST122-F-UNV-TBPK-1C-RS-PF-AM	RECESS	4	F17TB	66	3500K

**OPERATING ROOM
 RENOVATIONS**

ST. TAMMANY PARISH
 HOSPITAL
 1202 SOUTH TYLER STREET
 COVINGTON, LOUISIANA 70433

KEY PLAN - FLOOR



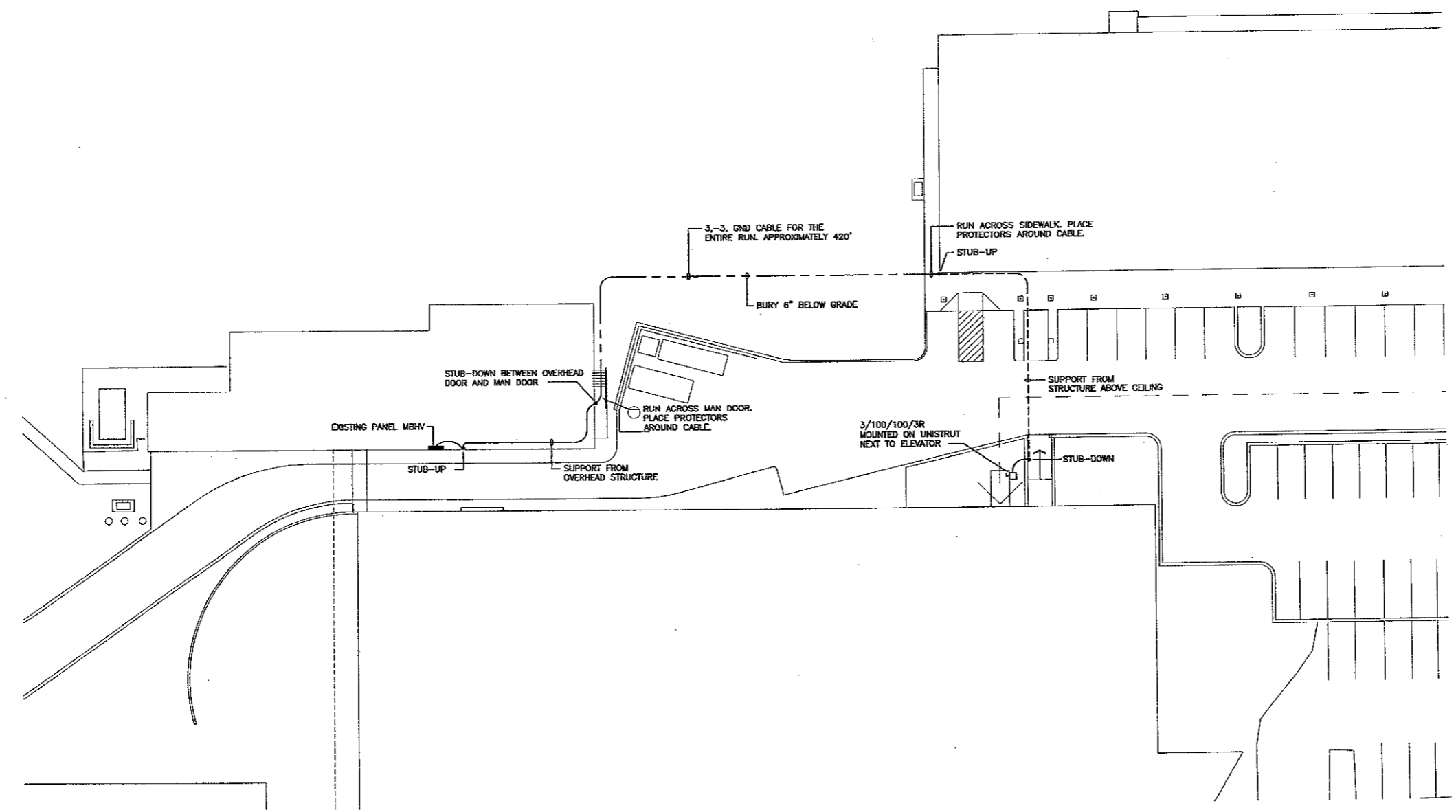
THESE DRAWINGS ARE THE SOLE PROPERTY OF FAUNTLEROY LATHAM WELDON BARRÉ ARCHITECTS, APC, AND ARE ISSUED AS INSTRUMENTS OF SERVICE. THESE DRAWINGS SHALL NOT BE COPIED, REPRODUCED OR USED IN ANY MANNER WITHOUT THE WRITTEN CONSENT OF FAUNTLEROY LATHAM WELDON BARRÉ ARCHITECTS, APC.

Issue	Date	Remark

PARTIAL SITE PLAN - ELECTRICAL

CONSTRUCTION DOCUMENT

Job No.	212001.01	Sheet No.	E2.0
Drawn by	ERS		
Checked by	KDS		
Date	29 FEB. 12		



1 PARTIAL SITE PLAN - ELECTRICAL
 E2.0 SCALE: 1" = 20'-0"



fautleroy latham weldon barré architects

a professional corporation in continuous practice since 1981

*architecture
planning
interiors
sustainable design
consulting*

229 ST. JOHN LANE
COVINGTON, LA 70433
985-893-4100

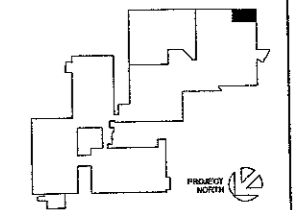
REFERENCE NOTES:

- 1 REMOVE FIXTURE AND SAVE FOR PARTS.
- 2 FIXTURES ARE TO REMAIN IN OPERATION THRU CONSTRUCTION.
- 3 REMOVE AND STORE AND REUSE.
- 4 RELOCATE THIS RECEPTACLE TO OUTSIDE OF THE LOCATION OF THE NEW DOOR.
- 5 SURFACE MOUNTED. REMOVE SURFACE CONDUIT AND J-BOX AND REINSTALL CABLE CONCEALED IN WALL WITH NEW J-BOX.
- 6 REMOVE ISOLATION PANELS AND STORE FOR REUSE.
- 7 ALL OPERATING ROOMS HAVE TYPICAL POWER LAYOUT. REMOVE ALL DEVICES AND LEAVE HOMERUNS FOR FUTURE USE. LASER RECEPTACLE MODULE, RECEPTACLE AND GROUND MODULE AND VIEW BOX TO BE REUSED.
- 8 ALL OPERATING ROOMS HAVE TYPICAL SPECIAL SYSTEM LAYOUT. REMOVE ALL DEVICES AND SAVE FOR REUSE.
- 9 ALL OPERATING ROOMS HAVE TYPICAL LIGHTING LAYOUTS. REMOVE LIGHTS AND DISPOSE.
- 10 REMOVE RECEPTACLE FOR STERILIZER. LEAVE HOMERUN FOR EXTENSION.
- 11 REMOVE THIS FIXTURE AND CLOCK AND SAVE FOR REINSTALLATION OVER NEW SCRUB SINK.
- 12 DISCONNECT VA UNIT TO ALLOW REMOVAL.

OPERATING ROOM RENOVATIONS

ST. TAMMANY PARISH HOSPITAL
1202 SOUTH TYLER STREET
COVINGTON, LOUISIANA 70433

KEY PLAN - FLOOR



THESE DRAWINGS ARE THE SOLE PROPERTY OF FAULTERLOY LATHAM WELDON BARRÉ ARCHITECTS, APC, AND ARE ISSUED AS INSTRUMENTS OF SERVICE. THESE DRAWINGS SHALL NOT BE COPIED, REPRODUCED OR USED IN ANY MANNER WITHOUT WRITTEN CONSENT OF FAULTERLOY LATHAM WELDON BARRÉ ARCHITECTS, APC.

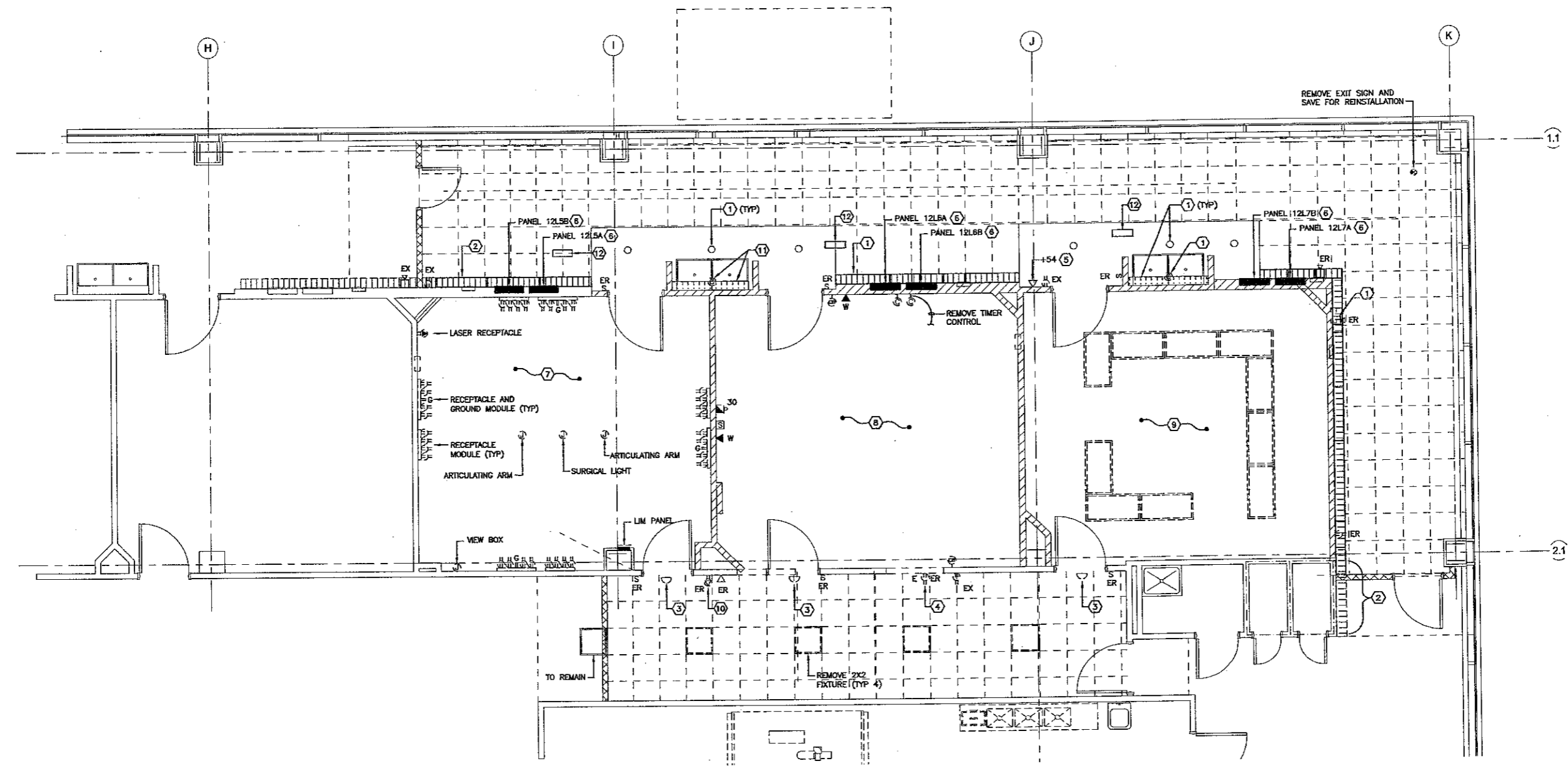
Issue	Date	Revised

DEMOLITION PLAN

CONSTRUCTION DOCUMENT

Job No.	212001.01	Sheet No.	E3.0
Drawn by	ERS		
Checked by	KRS		
Date	26 FEB. 12		

COPYRIGHT 2012, FAULTERLOY LATHAM WELDON BARRÉ ARCHITECTS, APC

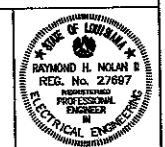
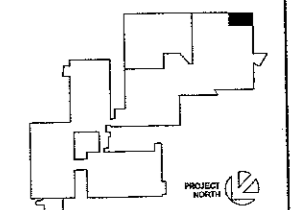


1 DEMOLITION PLAN
E3.0
SCALE: 1/4" = 1'

**OPERATING ROOM
RENOVATIONS**

ST. TAMMANY PARISH
HOSPITAL
1202 SOUTH TYLER STREET
COVINGTON, LOUISIANA 70433

KEY PLAN - FLOOR



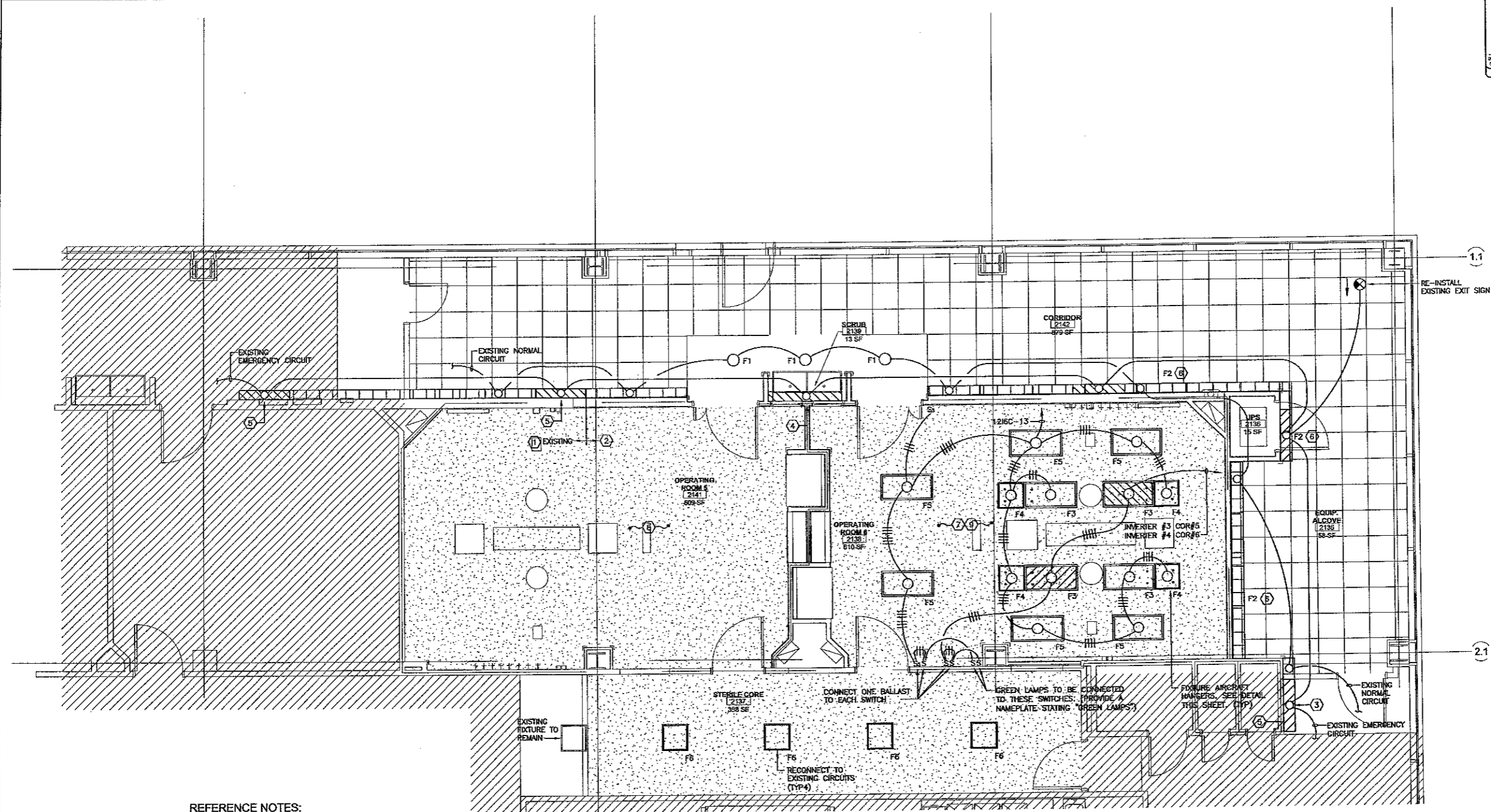
THESE DRAWINGS ARE THE SOLE PROPERTY OF FAUNTLEROY LATHAM WELDON BARRÉ ARCHITECTS, APC, AND ARE ISSUED AS INSTRUMENTS OF SERVICE. THESE DRAWINGS SHALL NOT BE COPIED, REPRODUCED OR USED IN ANY MANNER WITHOUT WRITTEN CONSENT OF FAUNTLEROY LATHAM WELDON BARRÉ ARCHITECTS, APC.

Room	Date	Revised

NEW FLOOR PLAN - LIGHTING
OPERATING ROOM FIXTURE HANGING DETAIL

CONSTRUCTION DOCUMENT

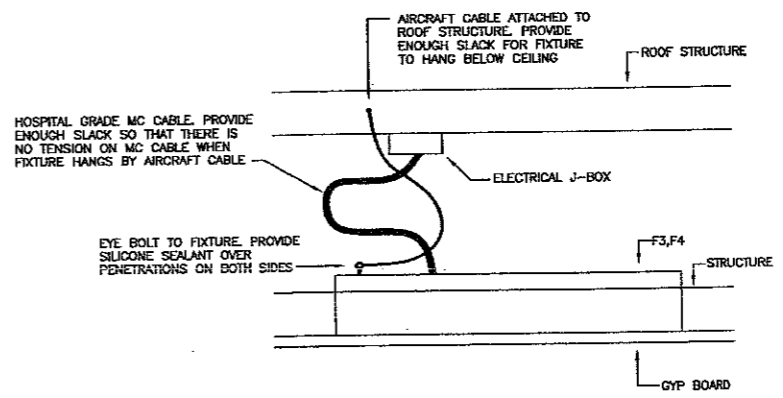
Job No.	212001.01	Sheet No.	E4.0
Drawn by	ERS		
Checked by	WDS		
Date	20/FEB/12		



REFERENCE NOTES:

- ① EXISTING PERIMETER WALL WASH FIXTURES. REWORK END TO ALLOW EXTENSION OF WALL WASH FIXTURES
- ② REUSE EXISTING FIXTURES, THAT WERE REMOVED UNDER DEMOLITION, TO COMPLETE RUN OF FIXTURES.
- ③ EXISTING PERIMETER WALL WASH FIXTURES. REWORK END SO THAT FIXTURE STOPS AT NEW CORNER UTILIZING FIXTURES REMOVED UNDER DEMOLITION.
- ④ REINSTALL EXISTING FIXTURE REMOVED FROM EXISTING SCRUB SINK.
- ⑤ EXISTING EMERGENCY FIXTURE.
- ⑥ LIGHTING FIXTURE SCHEDULE CALLS OUT SERIES OF FIXTURE. PROVIDE ENDS, CORNERS AND ALL OTHER COMPONENTS NECESSARY FOR A COMPLETE INSTALLATION.
- ⑦ ASSYMETRICAL DISTRIBUTION IN ALL FIXTURES TO BE AIMED TO CENTER OF ROOM.
- ⑧ LIGHTING IN OR#5 TO BE SIMILAR (REVERSE HAND) TO LIGHTING IN OR#6. LIGHTS, SWITCHES, CONDUIT, HANGERS AND ALL OTHER ITEMS AS INDICATED IN OR#6 TO BE PROVIDED IN OR#5.
- ⑨ ALL 120V OR 208V CONDUCTORS UTILIZED IN OPERATING ROOM ARE TO BE XHHW WITH CROSSLINKED POLYETHYLENE INSULATION AND A DIELECTRIC CONSTANT OF 3.5 OR LESS.

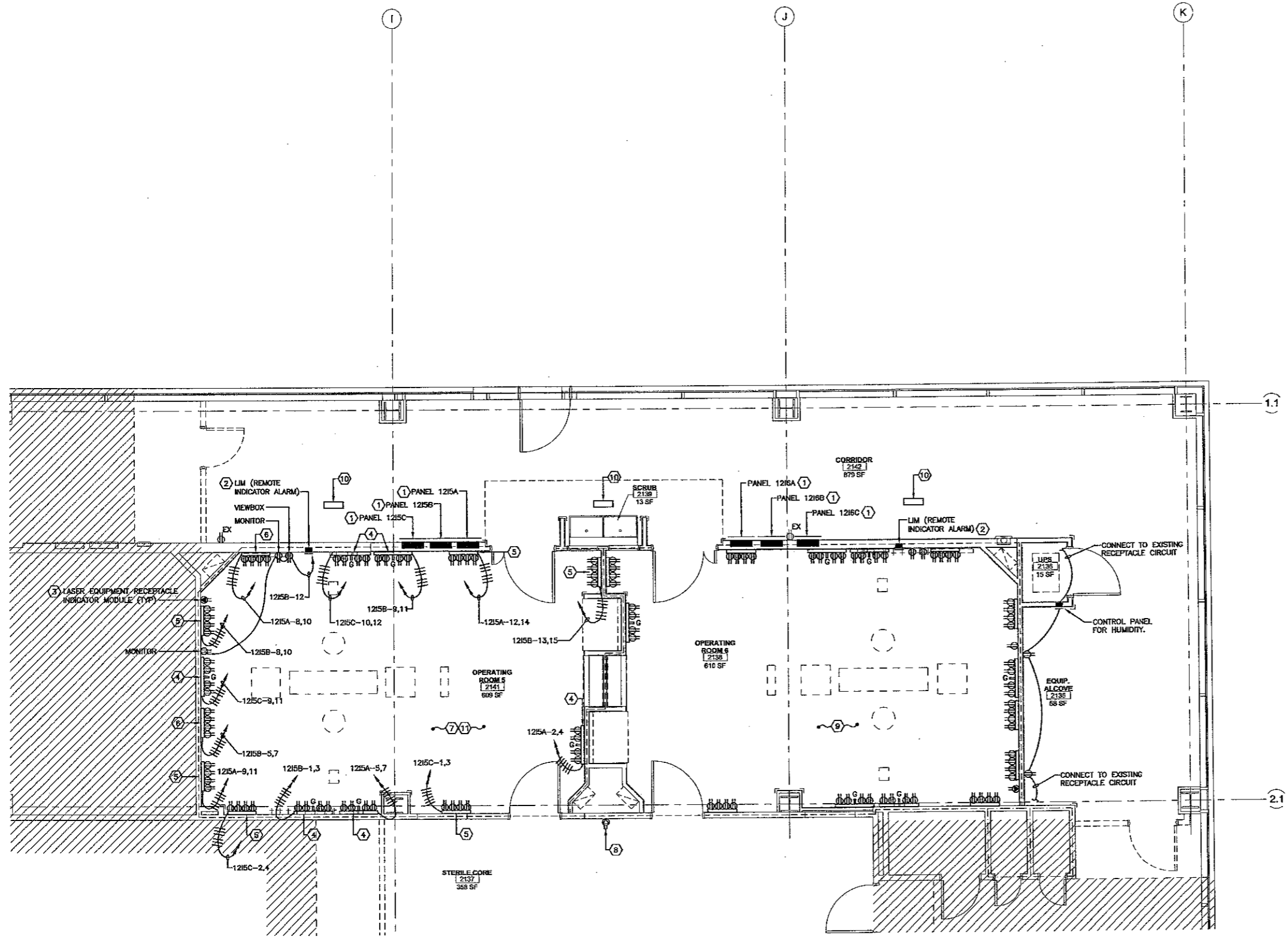
1 NEW FLOOR PLAN - LIGHTING
SCALE: 1/4" = 1'



2 OPERATING ROOM FIXTURE HANGING DETAIL
SCALE: N.T.S.

REFERENCE NOTES:

- ① EXISTING ISOLATION PANEL TO BE REUSED. REPLACE ALL EXISTING CIRCUIT BREAKERS (25A-2P, 80A-2P, (12) 20A-2P EACH). INTERCEPT & EXTEND EXISTING FEEDER TO NEW LOCATION. PROVIDE NEW NAMEPLATE AS REQUIRED. PROVIDE NEW CIRCUIT BREAKERS AS REQUIRED. EACH SYSTEM IS TO BE TESTED BY MANUFACTURER AFTER INSTALLATION.
- ② LINE ISOLATION MONITOR. PROVIDE NEW MONITORS MANUFACTURED BY THE SAME MANUFACTURER OF THE ISOLATION PANELS. (POST GLOVER MARK IV-LIM)
- ③ EXISTING LASER RECEPTACLE. INTERCEPT & EXTEND EXISTING FEEDER TO NEW LOCATION. (1"=2#6, #10 GND)
- ④ EXISTING POWER & GROUND MODULE. PROVIDE A STANDARD BACK BOX OF CORRECT SIZE FOR MODULE. REPLACE RECEPTACLES WITH 20A-120V ISOLATED GROUND, HOSPITAL GRADE RECEPTACLES. EXTEND INSULATED GROUND CONDUCTOR FROM GROUND PLUGS TO PANEL GROUND PER MANUFACTURERS RECOMMENDATION.
- ⑤ EXISTING POWER MODULE. PROVIDE A STANDARD BACK BOX OF CORRECT SIZE FOR MODULE. REPLACE RECEPTACLES WITH 20A-120V ISOLATED GROUND, HOSPITAL GRADE RECEPTACLES.
- ⑥ NEW POWER MODULE. POST GLOVER #RRP-400-C/E. PROVIDE A STANDARD BACK BOX OF CORRECT SIZE FOR MODULE.
- ⑦ SEE ARCHITECTURAL INTERIOR ELEVATIONS FOR EXACT MOUNTING OF ALL EQUIPMENT.
- ⑧ INTERCEPT AND EXTEND EXISTING HOMERUN FOR STERILIZER TO NEW LOCATION SHOWN.
- ⑨ POWER SYSTEM IN OR#6 TO BE SIMILAR (REVERSE HAND) TO POWER SYSTEM IN OR#5. CONDUIT, J-BOXES, CIRCUITING AND ALL OTHER ITEMS, AS INDICATED IN OR#5 TO BE PROVIDED IN OR#6.
- ⑩ EXTEND EXISTING VAV CIRCUIT TO NEW LOCATION AND CONNECT TO NEW VAV.
- ⑪ ALL 120V OR 208V CONDUCTORS UTILIZED IN OPERATING ROOM ARE TO BE XHHW WITH CROSSLINKED POLYETHYLENE INSULATION AND A DIELECTRIC CONSTANT OF 3.5 OR LESS.

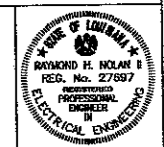
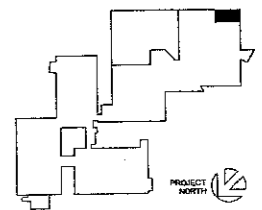


1 NEW FLOOR PLAN - POWER
 E5.0 SCALE: 1/4" = 1'

**OPERATING ROOM
 RENOVATIONS**

**ST. TAMMANY PARISH
 HOSPITAL**
 1202 SOUTH TYLER STREET
 COVINGTON, LOUISIANA 70433

KEY PLAN - FLOOR



THESE DRAWINGS ARE THE SOLE PROPERTY OF FAUTLEROY LATHAM WELDON BARRÉ ARCHITECTS, APC, AND ARE ISSUED AS RESTRICTIONS OF SERVICE. THESE DRAWINGS SHALL NOT BE COPIED, REPRODUCED OR USED IN ANY MANNER WITHOUT WRITTEN CONSENT OF FAUTLEROY LATHAM WELDON BARRÉ ARCHITECTS, APC.

Issue	Date	Remark

NEW FLOOR PLAN - POWER

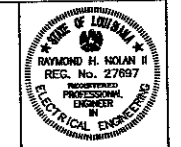
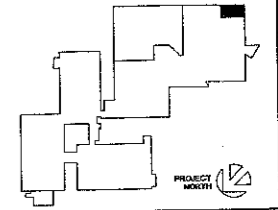
CONSTRUCTION DOCUMENT

Job No.	212001.01	Sheet No.	E5.0
Drawn by	ERS		
Checked by	KDR		
Date	28.FEB.12		

**OPERATING ROOM
 RENOVATIONS**

**ST. TAMMANY PARISH
 HOSPITAL**
 1202 SOUTH TYLER STREET
 COVINGTON, LOUISIANA 70433

KEY PLAN - FLOOR



THESE DRAWINGS ARE THE SOLE PROPERTY OF FAUNTLEROY LATHAM WELDON BARRÉ ARCHITECTS, APC, AND ARE ISSUED AS INSTRUMENTS OF SERVICE. THESE DRAWINGS SHALL NOT BE COPIED, REPRODUCED OR USED IN ANY MANNER WITHOUT WRITTEN CONSENT OF FAUNTLEROY LATHAM WELDON BARRÉ ARCHITECTS, APC.

Issue	Date	Remark

NEW FLOOR PLAN - SPECIAL SYSTEMS

CONSTRUCTION DOCUMENT

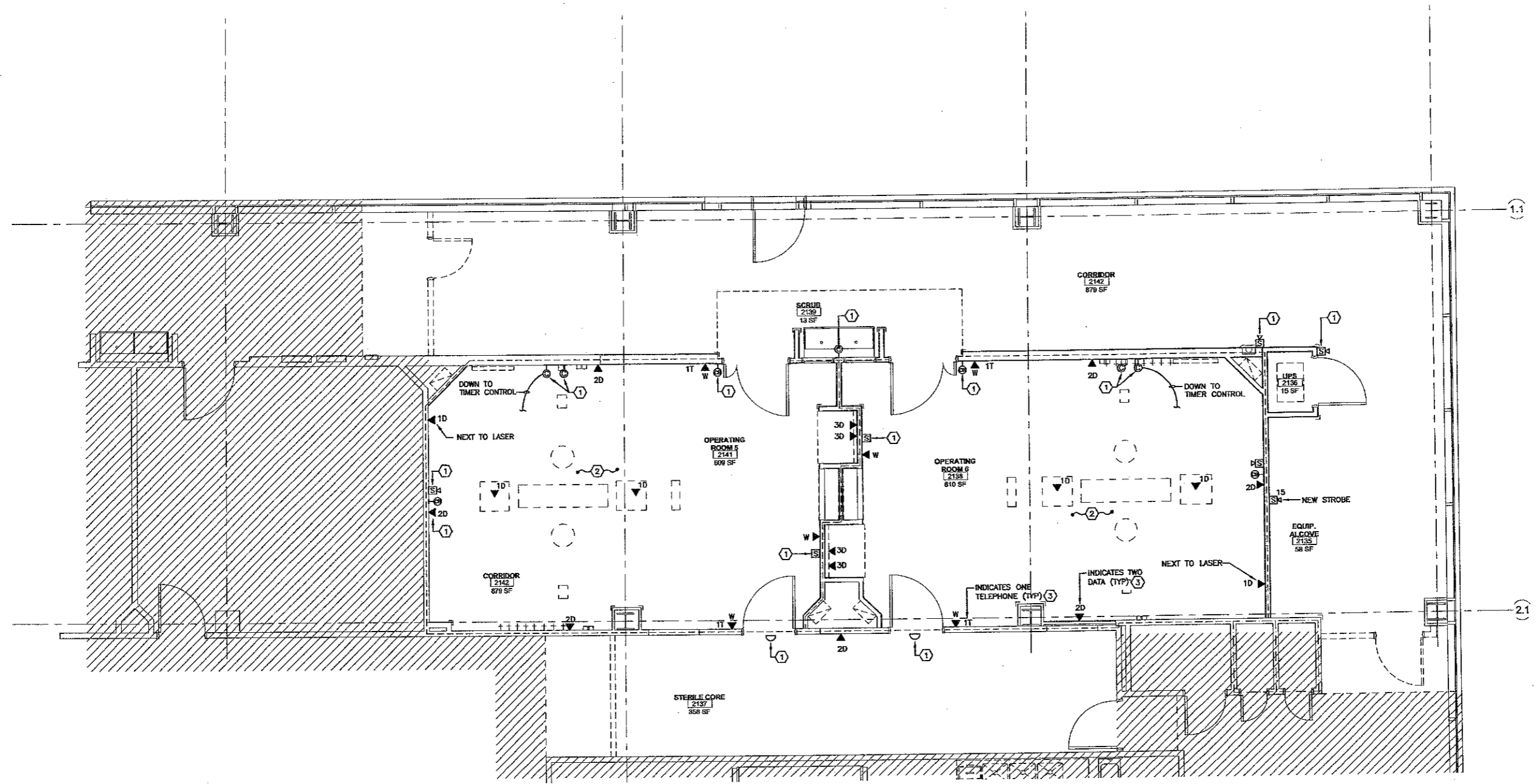
Job No.	212001.01	Sheet No.	E6.0
Drawn by	ERS		
Checked by	KDS		
Date	25/FEB/12		

REFERENCE NOTES:

- ① EXISTING EQUIPMENT TO BE REINSTALLED. EXTEND CIRCUITING AS REQUIRED.
- ② VERIFY ALL MOUNTING HEIGHTS OF ALL DEVICES WITH ARCHITECTURAL DRAWINGS.
- ③ TELEPHONE AND DATA CABLES PROVIDED BY OWNER. 3/4" C.C. INTO ACCESSIBLE CEILING SPACE.

GENERAL NOTES:

1. FIRE ALARM SYSTEM TO BE RECERTIFIED AFTER INSTALLATION.
2. NURSE CALL TO BE TESTED BY MANUFACTURER AFTER INSTALLATION.



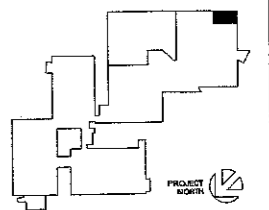
1 NEW FLOOR PLAN - SPECIAL SYSTEMS
 E6.0 SCALE: 1/4" = 1'

**OPERATING ROOM
 RENOVATIONS**

**ST. TAMMANY PARISH
 HOSPITAL**

1202 SOUTH TYLER STREET
 COVINGTON, LOUISIANA 70433

KEY PLAN - FLOOR



THESE DRAWINGS ARE THE SOLE PROPERTY OF FAUNTLEROY LATHAM WELDON BARRÉ ARCHITECTS, APC, AND ARE ISSUED AS INSTRUMENTS OF SERVICE. THESE DRAWINGS SHALL NOT BE COPIED, REPRODUCED OR USED IN ANY MANNER WITHOUT WRITTEN CONSENT OF FAUNTLEROY LATHAM WELDON BARRÉ ARCHITECTS, APC.

Issue	Date	Remark

NEW FLOOR PLAN - STRYKER SYSTEMS

CONSTRUCTION DOCUMENT

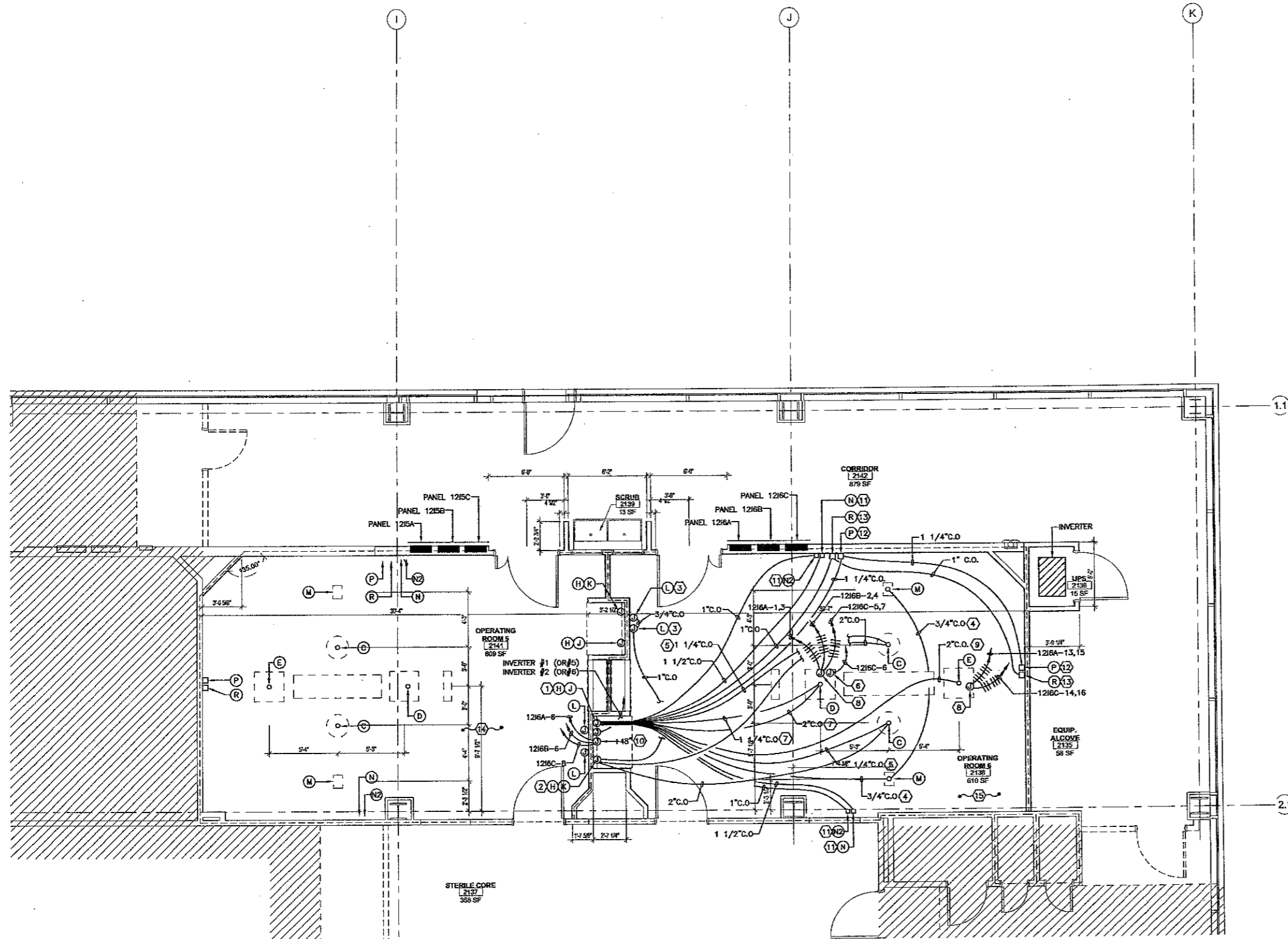
Job No.	212001.01	Sheet No.	E7.0
Drawn by	ERS		
Checked by	KDS		
Date	29.FEB.12		

GENERAL NOTES:

1. PROVIDE INSULATED BUSHING AT ENDS OF ALL OPEN CONDUITS.
2. PROVIDE PULL STRINGS IN ALL EMPTY CONDUITS.
3. EACH RECEPTACLE ON BOOMS ARE TO BE LABELED PER SPECIFICATIONS.

REFERENCE NOTES:

- ① 18"x18"x4" DEEP (OR LARGER) J-BOX FLUSH MOUNTED. SET BOTTOM OF BOX 9" AFF ON RIGHT SIDE OF DOC STATION. (FOR AV ROUTER).
- ② 6"x6"x4" DEEP J-BOX FLUSH MOUNTED. SET BOTTOM OF BOX 14" AFF ON LEFT SIDE OF DOC STATION. (FOR STRYKER LIGHT POWER SUPPLY)
- ③ STANDARD RACO 942 THREE GANG J-BOX MOUNTED VERTICAL ORIENTATION @ 50" AFF TO BOTTOM OF J-BOX. (FOR VISUM LIGHT AND CAMERA WALL CONTROL PANEL)
- ④ STUB-OUT 2" ABOVE CEILING AT SPEAKER LOCATION
- ⑤ TERMINATE CONDUIT TO J-BOX WITH INSULATED BUSHING. STUB-OUT WITHIN 18" OF CEILING MOUNT. (SURGICAL LIGHT)
- ⑥ MOUNT J-BOX WITHIN 18" OF CEILING MOUNT. CONTRACTOR TO HARDWIRE STRYKER WHIP DURING STRYKER INSTALLATION. (SURGICAL LIGHT & FLAT PANEL ARM)
- ⑦ TERMINATE CONDUIT TO J-BOX WITH INSULATED BUSHING. STUB-OUT WITHIN 18" OF CEILING MOUNT. (FLAT PANEL ARM & EQUIPMENT BOOM)
- ⑧ MOUNT J-BOX WITHIN 18" OF CEILING MOUNT. CONTRACTOR TO HARDWIRE STRYKER WHIP DURING STRYKER INSTALLATION. PROVIDE (8) RED 20A-120V-HOSPITAL GRADE, INSULATED GROUND RECEPTACLES. MOUNT WITH GROUND UP IN EACH OF THE EQUIPMENT BOOM & ANESTHESIA BOOM.
- ⑨ TERMINATE CONDUIT TO J-BOX WITH INSULATED BUSHING. STUB-OUT WITHIN 18" OF CEILING MOUNT. (ANESTHESIA BOOM)
- ⑩ CONNECT ONE CIRCUIT TO OUTLETS BEHIND ITEM J. ONE CIRCUIT TO OUTLETS BEHIND ITEM K. AND ONE CIRCUIT FOR OUTLETS IN MID AND UPPER SECTIONS.
- ⑪ 4"x4" J-BOX & SINGLE GANG MUD RING FLUSH MOUNTED IN WALL AT 18" AFF
- ⑫ 4"x4" J-BOX & SINGLE GANG MUD RING FLUSH MOUNTED IN WALL DIRECTLY ABOVE TOP OF MOUNTING BRACKET.
- ⑬ 4"x4" J-BOX & DUAL GANG MUD RING FLUSH MOUNTED IN WALL AT 12" BELOW FINISHED CEILING
- ⑭ STRYKER SYSTEM IN OR #5 TO BE SIMILAR. (REVERSE HAND) TO STRYKER SYSTEM OR #6. CONDUIT J-BOXES CIRCUITING AND ALL OTHER ITEMS AS INDICATED IN OR #6 TO BE PROVIDED IN OR #5.
- ⑮ THIS IS A DEPICTION OF THE WORK INDICATED ON THE STRYKER DRAWINGS. REVIEW STRYKER DRAWINGS AND INCLUDE ALL REQUIREMENTS IN BID.



1 NEW FLOOR PLAN - STRYKER SYSTEM
 E7.0
 SCALE: 1/4" = 1'

**OPERATING ROOM
RENOVATIONS**

**ST. TAMMANY PARISH
HOSPITAL**
1202 SOUTH TYLER STREET
COVINGTON, LOUISIANA 70433

KEY PLAN - FLOOR



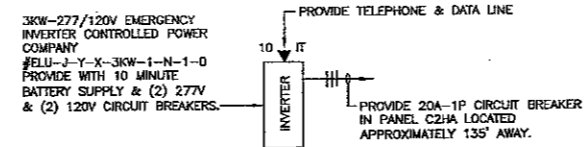
THESE DRAWINGS ARE THE SOLE PROPERTY OF FAUNTLEROY LATHAM WELDON BARRE ARCHITECTS, APC, AND ARE LOANED TO YOU AS INSTRUMENTS OF SERVICE. THESE DRAWINGS SHALL NOT BE COPIED, REPRODUCED OR USED IN ANY MANNER WITHOUT WRITTEN CONSENT OF FAUNTLEROY LATHAM WELDON BARRE ARCHITECTS, APC.

Issue	Date	Remark

EXISTING PANEL SCHEDULES
INVERTER DETAIL

CONSTRUCTION DOCUMENT

Job No.	212001.01	Sheet No.	E8.0
Drawn by	ERS		
Checked by	KDS		
Date	29.FEB.12		



- INVERTER LOAD**
1. SURGICAL LIGHTS OR#5 720VA (120V)
 2. SURGICAL LIGHTS OR#5 720VA (120V)
 3. LIGHTING OR#5 354VA (277V)
 4. LIGHTING OR#6 354VA (277V)
2148VA

2148VA X 1.25=2685VA=9.7 AMPS @ 277V-1φ

1 INVERTER DETAIL
E8.0 SCALE: N.T.S.

EXISTING PANEL SCHEDULE

PANEL 1200 & 1200
LOCATION TRPS & CIRCS

NEUTRAL MOUNTING 100% SURFACE 200% FULLY RATED SERIES RATED

VOLUME PRIMARY 277V-120V-3W
 SECONDARY - 120V-120V-3W
30 AMP PRIMARY MAIN CIRCUIT BREAKER
60 AMP SECONDARY MAIN CIRCUIT BREAKER

ENCLOSURE NEMA 1 NEMA 3R
 LOCKABLE COVER
FEED TOP
 BOTTOM
BRANCHES BOLT-ON, PANELBORED CONSTR.

NEUTRAL 100% SURFACE 200% FULLY RATED SERIES RATED

ENCLOSURE NEMA 1 NEMA 3R
 LOCKABLE COVER
FEED TOP
 BOTTOM
BRANCHES BOLT-ON, PANELBORED CONSTR.

FURNISH ISOLATED GROUND BAR KIT

PANEL NAMEPLATE, 3/4" ENGRAVED LAMINATED PLASTIC
USE 1/8" LETTERING FOR PANEL MAKE, 1 LINE
USE 1/8" LETTERING FOR VOLTS/AMPS/WHERE
FEED FROM, NO./YR. INSTALLED, 4 LINES
RED FIELD, WHITE LETTERS

7.5 KVA ISOLATING TRANSFORMER (277/120-240)

Ckt. No.	# of Poles	TRIP AMPS	LOAD DESCRIPTION	VOLT-AMPS	LOAD CODE	LOAD VOLT-AMPS	LOAD DESCRIPTION	TRIP AMPS	# of Poles	Ckt. No.
1	2	20	EQUIPMENT ROOM	400 R	R	400	RECEPTACLE MODULE	20	2	2
2	2	20	EQUIPMENT ROOM	400 R	R	400	RECEPTACLE MODULE	20	2	4
3	2	20	EQUIPMENT ROOM	400 R	R	400	RECEPTACLE MODULE	20	2	6
4	2	20	EQUIPMENT ROOM	400 R	R	400	RECEPTACLE MODULE	20	2	8
5	2	20	EQUIPMENT ROOM	400 R	R	400	RECEPTACLE MODULE	20	2	10
6	2	20	EQUIPMENT ROOM	400 R	R	400	RECEPTACLE MODULE	20	2	12
7	2	20	EQUIPMENT ROOM	400 R	R	400	RECEPTACLE MODULE	20	2	14
8	2	20	EQUIPMENT ROOM	400 R	R	400	RECEPTACLE MODULE	20	2	16
9	2	20	EQUIPMENT ROOM	400 R	R	400	RECEPTACLE MODULE	20	2	18
10	2	20	EQUIPMENT ROOM	400 R	R	400	RECEPTACLE MODULE	20	2	20
11	2	20	EQUIPMENT ROOM	400 R	R	400	RECEPTACLE MODULE	20	2	22
12	2	20	EQUIPMENT ROOM	400 R	R	400	RECEPTACLE MODULE	20	2	24
13	2	20	EQUIPMENT ROOM	400 R	R	400	RECEPTACLE MODULE	20	2	26
14	2	20	EQUIPMENT ROOM	400 R	R	400	RECEPTACLE MODULE	20	2	28
15	2	20	EQUIPMENT ROOM	400 R	R	400	RECEPTACLE MODULE	20	2	30
16	2	20	EQUIPMENT ROOM	400 R	R	400	RECEPTACLE MODULE	20	2	32
17	2	20	EQUIPMENT ROOM	400 R	R	400	RECEPTACLE MODULE	20	2	34
18	2	20	EQUIPMENT ROOM	400 R	R	400	RECEPTACLE MODULE	20	2	36
19	2	20	EQUIPMENT ROOM	400 R	R	400	RECEPTACLE MODULE	20	2	38
20	2	20	EQUIPMENT ROOM	400 R	R	400	RECEPTACLE MODULE	20	2	40

TRIP AMPS = FUSE SIZE
IF FUSIBLE SWITCHES

REMARKS:

• A/C @ 120K & HEAT @ 100K LARGEST LOAD OF A/C OR HEAT IS USED IN CALCULATIONS EXCEPT IN THE CASE OF HEAT PUMPS IN WHICH BOTH LOADS ARE USED.

EXISTING PANEL SCHEDULE

PANEL 1200 & 1200
LOCATION TRPS & CIRCS

NEUTRAL MOUNTING 100% SURFACE 200% FULLY RATED SERIES RATED

VOLUME PRIMARY 277V-120V-3W
 SECONDARY - 120V-120V-3W
30 AMP PRIMARY MAIN CIRCUIT BREAKER
60 AMP SECONDARY MAIN CIRCUIT BREAKER

ENCLOSURE NEMA 1 NEMA 3R
 LOCKABLE COVER
FEED TOP
 BOTTOM
BRANCHES BOLT-ON, PANELBORED CONSTR.

NEUTRAL 100% SURFACE 200% FULLY RATED SERIES RATED

ENCLOSURE NEMA 1 NEMA 3R
 LOCKABLE COVER
FEED TOP
 BOTTOM
BRANCHES BOLT-ON, PANELBORED CONSTR.

FURNISH ISOLATED GROUND BAR KIT

PANEL NAMEPLATE, 3/4" ENGRAVED LAMINATED PLASTIC
USE 1/8" LETTERING FOR PANEL MAKE, 1 LINE
USE 1/8" LETTERING FOR VOLTS/AMPS/WHERE
FEED FROM, NO./YR. INSTALLED, 4 LINES
RED FIELD, WHITE LETTERS

7.5 KVA ISOLATING TRANSFORMER (277/120-240)

Ckt. No.	# of Poles	TRIP AMPS	LOAD DESCRIPTION	VOLT-AMPS	LOAD CODE	LOAD VOLT-AMPS	LOAD DESCRIPTION	TRIP AMPS	# of Poles	Ckt. No.
1	2	20	EQUIPMENT ROOM	400 R	R	400	RECEPTACLE MODULE	20	2	2
2	2	20	EQUIPMENT ROOM	400 R	R	400	RECEPTACLE MODULE	20	2	4
3	2	20	EQUIPMENT ROOM	400 R	R	400	RECEPTACLE MODULE	20	2	6
4	2	20	EQUIPMENT ROOM	400 R	R	400	RECEPTACLE MODULE	20	2	8
5	2	20	EQUIPMENT ROOM	400 R	R	400	RECEPTACLE MODULE	20	2	10
6	2	20	EQUIPMENT ROOM	400 R	R	400	RECEPTACLE MODULE	20	2	12
7	2	20	EQUIPMENT ROOM	400 R	R	400	RECEPTACLE MODULE	20	2	14
8	2	20	EQUIPMENT ROOM	400 R	R	400	RECEPTACLE MODULE	20	2	16
9	2	20	EQUIPMENT ROOM	400 R	R	400	RECEPTACLE MODULE	20	2	18
10	2	20	EQUIPMENT ROOM	400 R	R	400	RECEPTACLE MODULE	20	2	20
11	2	20	EQUIPMENT ROOM	400 R	R	400	RECEPTACLE MODULE	20	2	22
12	2	20	EQUIPMENT ROOM	400 R	R	400	RECEPTACLE MODULE	20	2	24
13	2	20	EQUIPMENT ROOM	400 R	R	400	RECEPTACLE MODULE	20	2	26
14	2	20	EQUIPMENT ROOM	400 R	R	400	RECEPTACLE MODULE	20	2	28
15	2	20	EQUIPMENT ROOM	400 R	R	400	RECEPTACLE MODULE	20	2	30
16	2	20	EQUIPMENT ROOM	400 R	R	400	RECEPTACLE MODULE	20	2	32
17	2	20	EQUIPMENT ROOM	400 R	R	400	RECEPTACLE MODULE	20	2	34
18	2	20	EQUIPMENT ROOM	400 R	R	400	RECEPTACLE MODULE	20	2	36
19	2	20	EQUIPMENT ROOM	400 R	R	400	RECEPTACLE MODULE	20	2	38
20	2	20	EQUIPMENT ROOM	400 R	R	400	RECEPTACLE MODULE	20	2	40

TRIP AMPS = FUSE SIZE
IF FUSIBLE SWITCHES

REMARKS:

• A/C @ 120K & HEAT @ 100K LARGEST LOAD OF A/C OR HEAT IS USED IN CALCULATIONS EXCEPT IN THE CASE OF HEAT PUMPS IN WHICH BOTH LOADS ARE USED.

EXISTING PANEL SCHEDULE

PANEL 1200 & 1200
LOCATION TRPS & CIRCS

NEUTRAL MOUNTING 100% SURFACE 200% FULLY RATED SERIES RATED

VOLUME PRIMARY 277V-120V-3W
 SECONDARY - 120V-120V-3W
30 AMP PRIMARY MAIN CIRCUIT BREAKER
60 AMP SECONDARY MAIN CIRCUIT BREAKER

ENCLOSURE NEMA 1 NEMA 3R
 LOCKABLE COVER
FEED TOP
 BOTTOM
BRANCHES BOLT-ON, PANELBORED CONSTR.

NEUTRAL 100% SURFACE 200% FULLY RATED SERIES RATED

ENCLOSURE NEMA 1 NEMA 3R
 LOCKABLE COVER
FEED TOP
 BOTTOM
BRANCHES BOLT-ON, PANELBORED CONSTR.

FURNISH ISOLATED GROUND BAR KIT

PANEL NAMEPLATE, 3/4" ENGRAVED LAMINATED PLASTIC
USE 1/8" LETTERING FOR PANEL MAKE, 1 LINE
USE 1/8" LETTERING FOR VOLTS/AMPS/WHERE
FEED FROM, NO./YR. INSTALLED, 4 LINES
RED FIELD, WHITE LETTERS

7.5 KVA ISOLATING TRANSFORMER (277/120-240)

Ckt. No.	# of Poles	TRIP AMPS	LOAD DESCRIPTION	VOLT-AMPS	LOAD CODE	LOAD VOLT-AMPS	LOAD DESCRIPTION	TRIP AMPS	# of Poles	Ckt. No.
1	2	20	EQUIPMENT ROOM	400 R	R	400	RECEPTACLE MODULE	20	2	2
2	2	20	EQUIPMENT ROOM	400 R	R	400	RECEPTACLE MODULE	20	2	4
3	2	20	EQUIPMENT ROOM	400 R	R	400	RECEPTACLE MODULE	20	2	6
4	2	20	EQUIPMENT ROOM	400 R	R	400	RECEPTACLE MODULE	20	2	8
5	2	20	EQUIPMENT ROOM	400 R	R	400	RECEPTACLE MODULE	20	2	10
6	2	20	EQUIPMENT ROOM	400 R	R	400	RECEPTACLE MODULE	20	2	12
7	2	20	EQUIPMENT ROOM	400 R	R	400	RECEPTACLE MODULE	20	2	14
8	2	20	EQUIPMENT ROOM	400 R	R	400	RECEPTACLE MODULE	20	2	16
9	2	20	EQUIPMENT ROOM	400 R	R	400	RECEPTACLE MODULE	20	2	18
10	2	20	EQUIPMENT ROOM	400 R	R	400	RECEPTACLE MODULE	20	2	20
11	2	20	EQUIPMENT ROOM	400 R	R	400	RECEPTACLE MODULE	20	2	22
12	2	20	EQUIPMENT ROOM	400 R	R	400	RECEPTACLE MODULE	20	2	24
13	2	20	EQUIPMENT ROOM	400 R	R	400	RECEPTACLE MODULE	20	2	26
14	2	20	EQUIPMENT ROOM	400 R	R	400	RECEPTACLE MODULE	20	2	28
15	2	20	EQUIPMENT ROOM	400 R	R	400	RECEPTACLE MODULE	20	2	30
16	2	20	EQUIPMENT ROOM	400 R	R	400	RECEPTACLE MODULE	20	2	32
17	2	20	EQUIPMENT ROOM	400 R	R	400	RECEPTACLE MODULE	20	2	34
18	2	20	EQUIPMENT ROOM	400 R	R	400	RECEPTACLE MODULE	20	2	36
19	2	20	EQUIPMENT ROOM	400 R	R	400	RECEPTACLE MODULE	20	2	38
20	2	20	EQUIPMENT ROOM	400 R	R	400	RECEPTACLE MODULE	20	2	40

TRIP AMPS = FUSE SIZE
IF FUSIBLE SWITCHES

REMARKS:

• A/C @ 120K & HEAT @ 100K LARGEST LOAD OF A/C OR HEAT IS USED IN CALCULATIONS EXCEPT IN THE CASE OF HEAT PUMPS IN WHICH BOTH LOADS ARE USED.