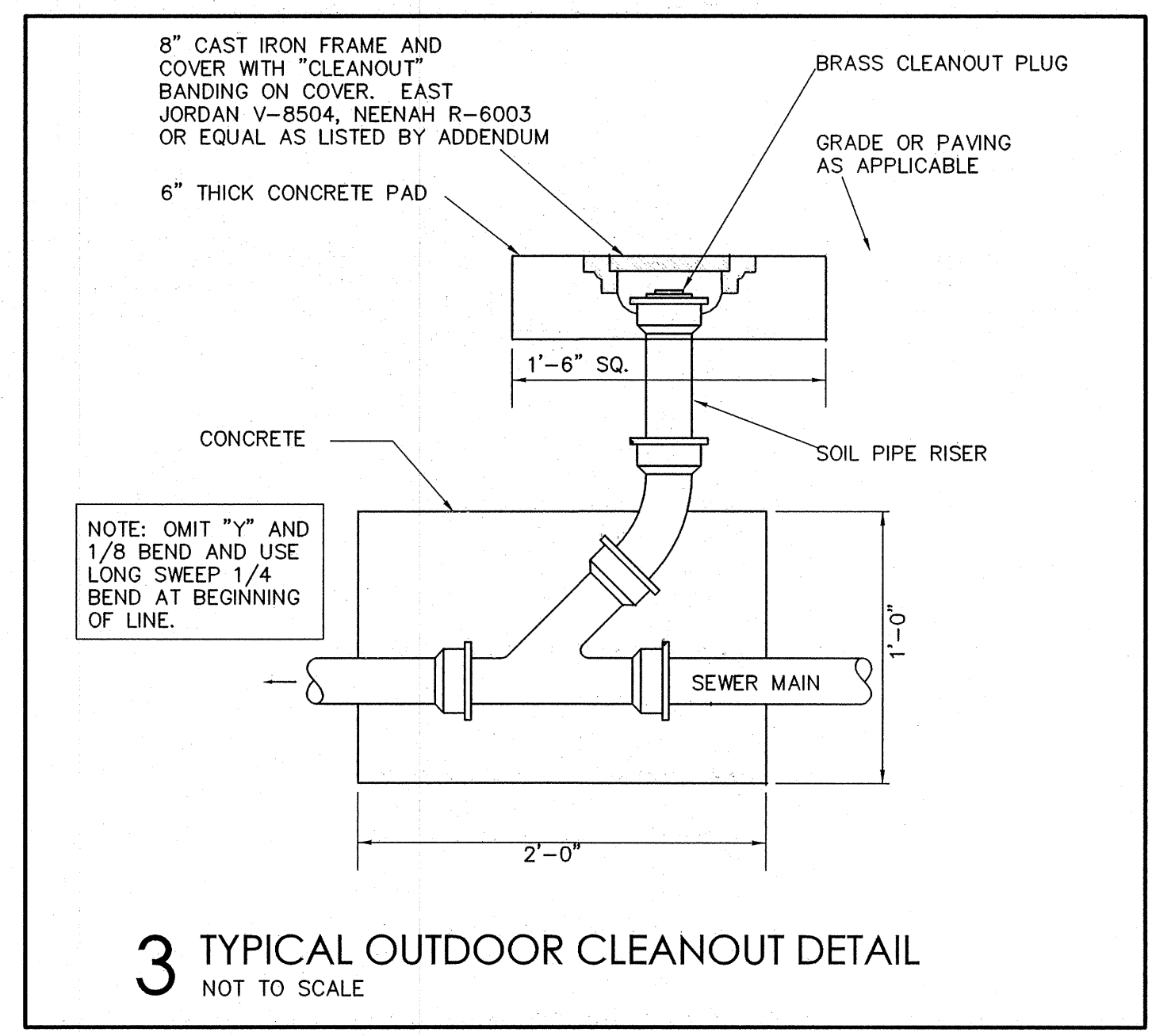


- 2 KEYNOTES:**
- ① ROUTE DISCHARGE PIPING TO DETENTION POND. PROVIDE SCREEN ON END OF DISCHARGE PIPING.
 - ② RE: 3M02 AND 5M02 FOR LIFT STATION DETAILS.
 - ③ PROVIDE GATE VALVE IN UNDERGROUND BOX.
 - ④ WATER WELL SHALL CONSIST OF PUMP P-3, AS WELL AS 220 GALLON CAPACITY GALVANIZED TANK WITH BASE AND SUPPORT.
 - ⑤ TIE-IN TO TRAILER PLUMBING (SCALE HOUSE) AND INSTALL A HOSE BIBB @ GRADE.
 - ⑥ INSTALL HOSE BIBB ON ELEVATED LEVEL, OUTSIDE BUILDING @ WALL.
 - ⑦ INSTALL HOSE BIBB INSIDE OF BLDG. @ WALL.
 - ⑧ SEE CONNECTION ON FOUNDATION DWG.
 - ⑨ ROUTE DISCHARGE PIPING TO EXISTING DITCH. PROVIDE SCREEN ON END OF DISCHARGE PIPING.

1 SITE PLAN
SCALE: 1"=40'



DESIGN CONSULTANT
domain design
CONSULTANTS AND ENGINEERS

GRSA-SIGMA
CONSULTANTS AND ENGINEERS

NEW OFFICE/WAREHOUSE BUILDING FOR
IESI WASTE TRANSFER STATION
COVINGTON LA 70435
HWY 25

THESE DRAWINGS ARE THE PROPERTY OF DOMAIN DESIGN ARCHITECTURE AND ARE NOT TO BE REPRODUCED IN WHOLE OR IN PART. THEY ARE ONLY TO BE USED FOR THE PROJECT AND SITE SPECIFICALLY IDENTIFIED HEREIN.

SCALE BYTES HEREON ARE VALID ON THE ORIGINAL DRAWINGS ONLY. CONTRACTOR SHALL CAREFULLY REVIEW ALL DIMENSIONS AND CONDITIONS BEFORE AND REPORT TO THE ARCHITECT ANY ERRORS, OMISSIONS, OR DISCREPANCIES DISCOVERED.

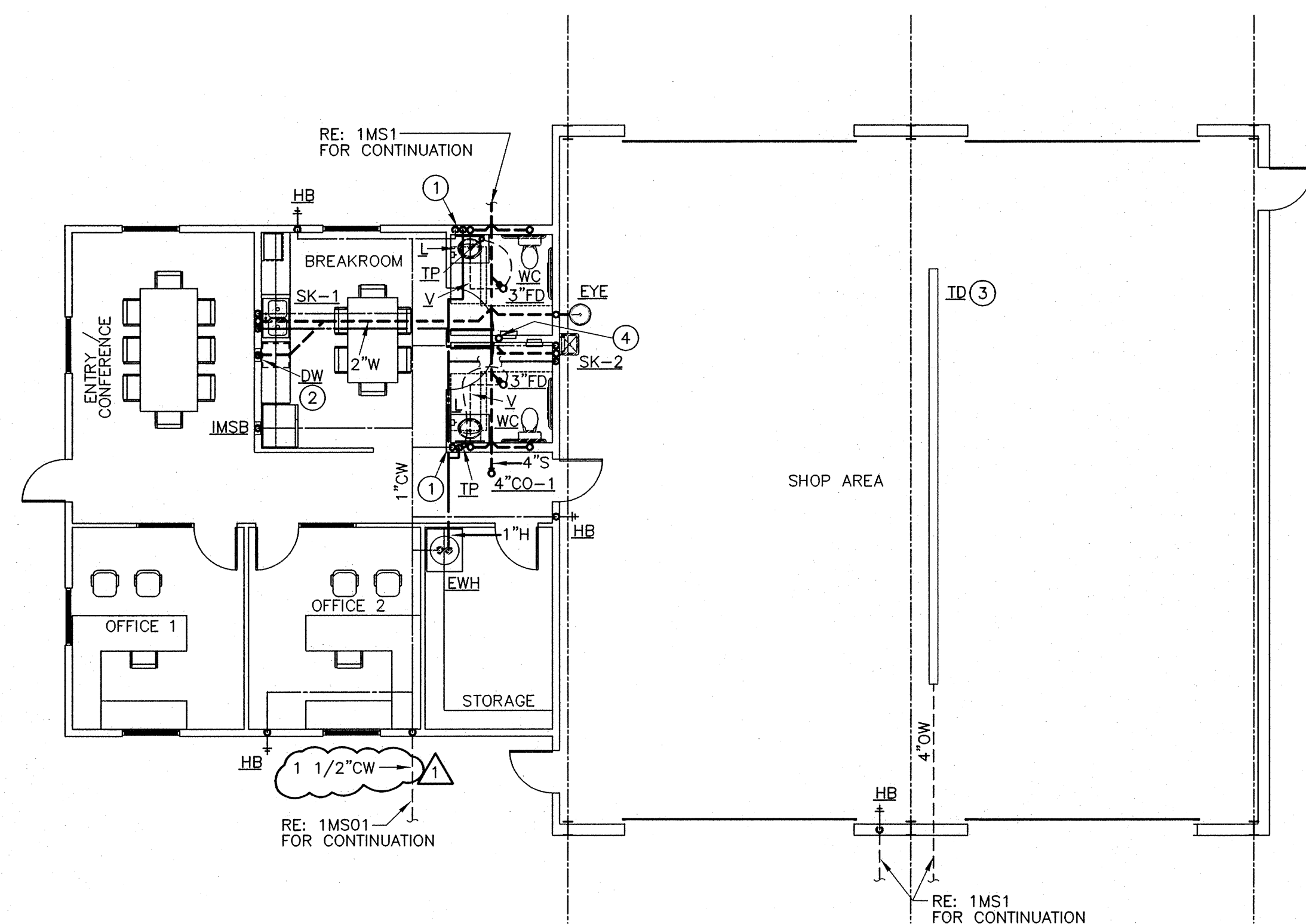
THESE PLANS WERE PREPARED IN THIS OFFICE UNDER OUR PERSONAL SUPERVISION, AND TO THE BEST OF OUR KNOWLEDGE COMPLY WITH STATE AND LOCAL CODES. WE WILL GENERALLY ADMINISTER CONSTRUCTION.

PROJ. # 07-0033

REVISIONS	DATE
1 REVISED PER ADDENDUM 5-7-09	

DATE
12 MAR 2008

SHEET
MS01

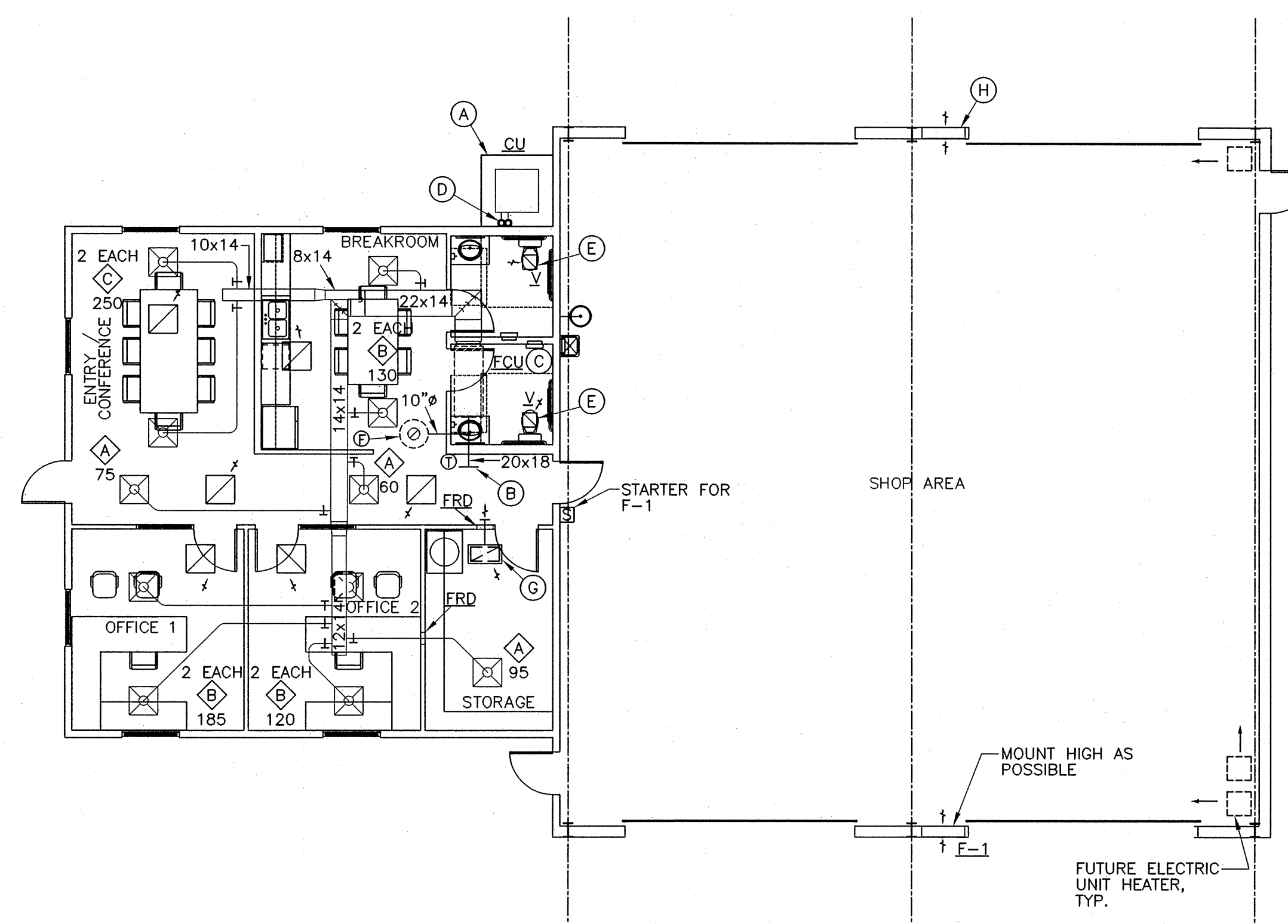


NOTE:
RE: 1M02 PLUMBING RISER FOR PIPE SIZES NOT SHOWN.

1 MAINTENANCE BUILDING PLUMBING PLAN
SCALE: 1/8"=1'-0"

—	DOMESTIC COLD WATER (CW)	$\overline{6 \times 6}$ OR $\overline{6 \times 6}$	6"x6" RECTANGULAR DUCT
--- CW ---	DOMESTIC COLD WATER UNDERFLOOR/ UNDERGROUND, OTHERS SIMILAR	$\overline{12" \phi}$ OR $\overline{12" \phi}$	12" DIAMETER ROUND DUCT
—	DOMESTIC HOT WATER (H)	FRD	FIRE RATED DAMPER
---	SOIL LINE	\overline{OBD}	OPPOSED BLADE DAMPER
--- OW ---	OILY WATER	$\overline{BOUND DUCT}$	MANUAL BALANCING DAMPER (MBD)
---	WASTE LINE	\overline{MCD}	MOTORIZED CONTROL DAMPER
---	VENT	⊙	THERMOSTAT
—⊙ ED	FLOOR DRAIN	⊙	MANUAL STARTER/SWITCH
—⊙ HD	HUB DRAIN	⊙	RETURN/SUPPLY AIR SMOKE DETECTOR
—⊙ CO	CLEAN OUT	⊙	COMBINATION MOTOR STARTER DISCONNECT BY MECHANICAL
RA	RETURN AIR		
SA	SUPPLY AIR		
EXH	EXHAUST		
OA	OUTSIDE AIR		
RE: 2M1	REFER TO DETAIL 2, SHEET M1		
①	REFERENCE TO MECHANICAL KEYNOTE NUMBER 1.		
— HB	HOSE BIBB		
—	GATE VALVE IN UNDERGROUND BOX		
⊙	24x24 RETURN AIR GRILLE IN CEILING		
⊙	TYPE "B" CEILING DIFFUSER (4 WAY THROW UNLESS NOTED OTHERWISE BY DIRECTION ARROWS.) BALANCE TO 200 CFM, SEE EQUIPMENT SCHEDULE, OTHERS SIMILAR.		
⊙	DUCT TURNING VANE		

3 MECHANICAL SYMBOL SCHEDULE



2 MAINTENANCE BUILDING HVAC PLAN
SCALE: 1/8"=1'-0"

SYMBOL	DESCRIPTION	CW	H	WASTE	VENT
WC	WATER CLOSET (TANK)	1/2"	--	4"	3"
L	LAVATORY	1/2"	1/2"	2"	1-1/2"
SK	SINK	1/2"	1/2"	2"	1-1/2"
DW	DISHWASHER	--	1/2"	2"	1-1/2"
HB	HOSE BIBB	1/2"	--	--	--
IMSB	ICE MAKER SERVICE BOX	1/2"	--	--	--
EYE	EMERGENCY EYEWASH	1/2"	--	2"	1-1/2"
3"FD	3" FLOOR DRAIN	--	--	3"	1-1/2"
2"HD	2" HUB DRAIN	--	--	2"	1-1/2"

WATER PIPE SIZING TABLE

UNLESS SHOWN OTHERWISE, DOMESTIC WATER LINES SHALL RUN CONCEALED OVERHEAD AS DESIGNATED IN PLUMBING FIXTURE SCHEDULE & BE SIZED ACCORDING TO TABLE BELOW. PLANS & RISERS DO NOT NECESSARILY SHOW ALL PIPING RUNS. INSTALL A FACTORY WATER HAMMER ARRESTOR AT TOP OF EACH FIXTURE GROUP AND AT WATER HEATER.

NUMBER OF FIXTURES *	PIPE SIZE (IPS)
2 OR LESS	1/2"
3 TO 5	3/4"
6 TO 10	1"
11 TO 15	1-1/4"
16 TO 28	1-1/2"

* FLUSH VALVE WATER CLOSET IS EQUIVALENT TO 6 FIXTURES

4 PLUMBING LEGEND

- ① ROUTE 3/4" CW DOWN IN WALL AND CONNECT TO LAVATORY AND WATER CLOSET.
- ② PROVIDE DRAIN AND VENT FOR DISHWASHER. CONNECT HOT WATER LINES TO PIPING FOR ADJACENT SINK.
- ③ TRENCH DRAIN SHALL BE ACO MODEL S100K WITH ADA IRON GRATE, DIN 19580 CLASS F, OR APPROVED EQUAL.
- ④ PROVIDE 2" HUB DRAIN ABOVE CEILING. ROUTE CONDENSATE DRAIN LINE FROM FCU TO HUB DRAIN. ROUTE 2" WASTE LINE FROM 2" HD DOWN WALL AND CONNECT TO 4" S.

5 PLUMBING KEYNOTES

- (A) 4" THICK CONCRETE HOUSEKEEPING PAD. EXTEND MINIMUM OF 6" AROUND UNIT, ALL SIDES.
- (B) PROVIDE 20" x 18" RA DUCT, ROUTE AS SHOWN, LEAVE END OF DUCT OPEN TO CEILING SPACE.
- (C) FAN COIL UNIT SUSPENDED ABOVE CEILING, RE: 2M03 FOR DETAILS.
- (D) ROUTE REFRIGERANT SUCTION AND LIQUID LINES UP WALL, SUPPORT PROPERLY, TO LEVEL ABOVE INTERIOR CEILING. ROUTE TO AND CONNECT TO FCU. SEAL PIPING PENETRATIONS THROUGH WALL.
- (E) PROVIDE 4" ϕ DUCT FROM VENT AND ROUTE UP THROUGH ROOF. ENSURE THAT DUCT IS ROUTED AS CLOSE TO NORTH WALL AS POSSIBLE. PROVIDE RAIN CAP ON DUCT EXPOSED ABOVE ROOF.
- (F) PROVIDE ROOF MOUNTED GRAVITY INTAKE. CONNECT TO 10" ϕ O.A. DUCT.
- (G) PROVIDE 12" x 24" RA CEILING GRILLE WITH 14" x 26" x 8" SHEETMETAL PLENUM. CONNECT 6" ϕ DUCT TO PLENUM, ROUTE AS SHOWN, LEAVE END OPEN TO CEILING SPACE.
- (H) PROVIDE 36" x 48" INTAKE LOUVER. LOUVER SHALL BE INSTALLED HIGH ON WALL AS POSSIBLE. PROVIDE BIRDSCREEN ON EXTERIOR SIDE OF LOUVER.

6 HVAC KEYNOTES

DESIGN CONSULTANT
domain design
ARCHITECTURE & INTERIORS

GRSA-SIGMA
CONSULTANTS AND ENGINEERS

NEW OFFICE/ WAREHOUSE BUILDING FOR
**IESI WASTE
TRANSFER STATION**

HWY 25 LA 70435
COVINGTON

PROJ. # 007-0033

REVISIONS

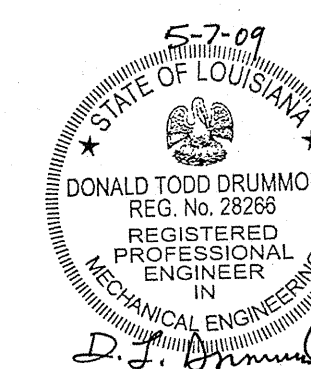
1 REVISED PER ADDENDUM 5-7-09

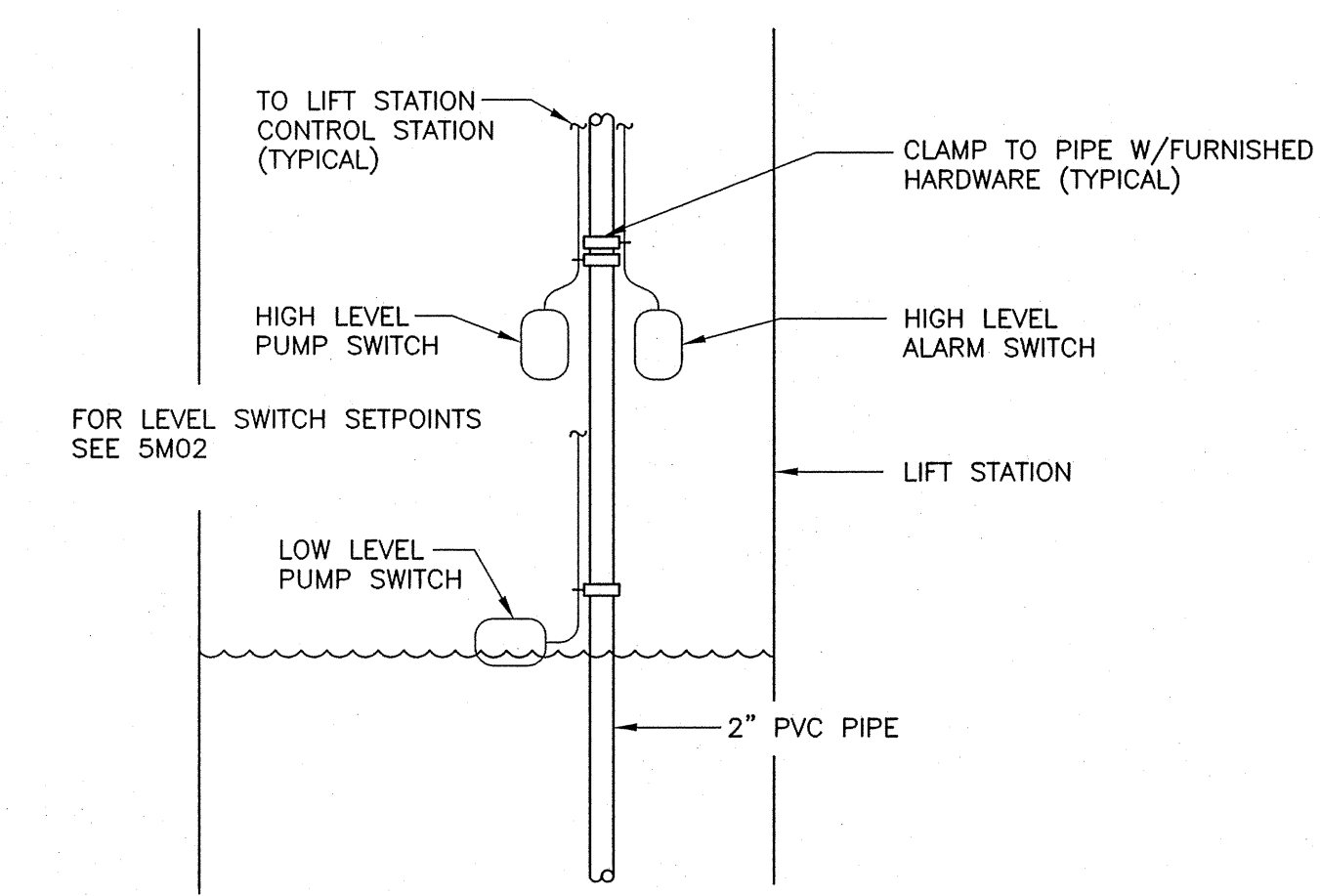
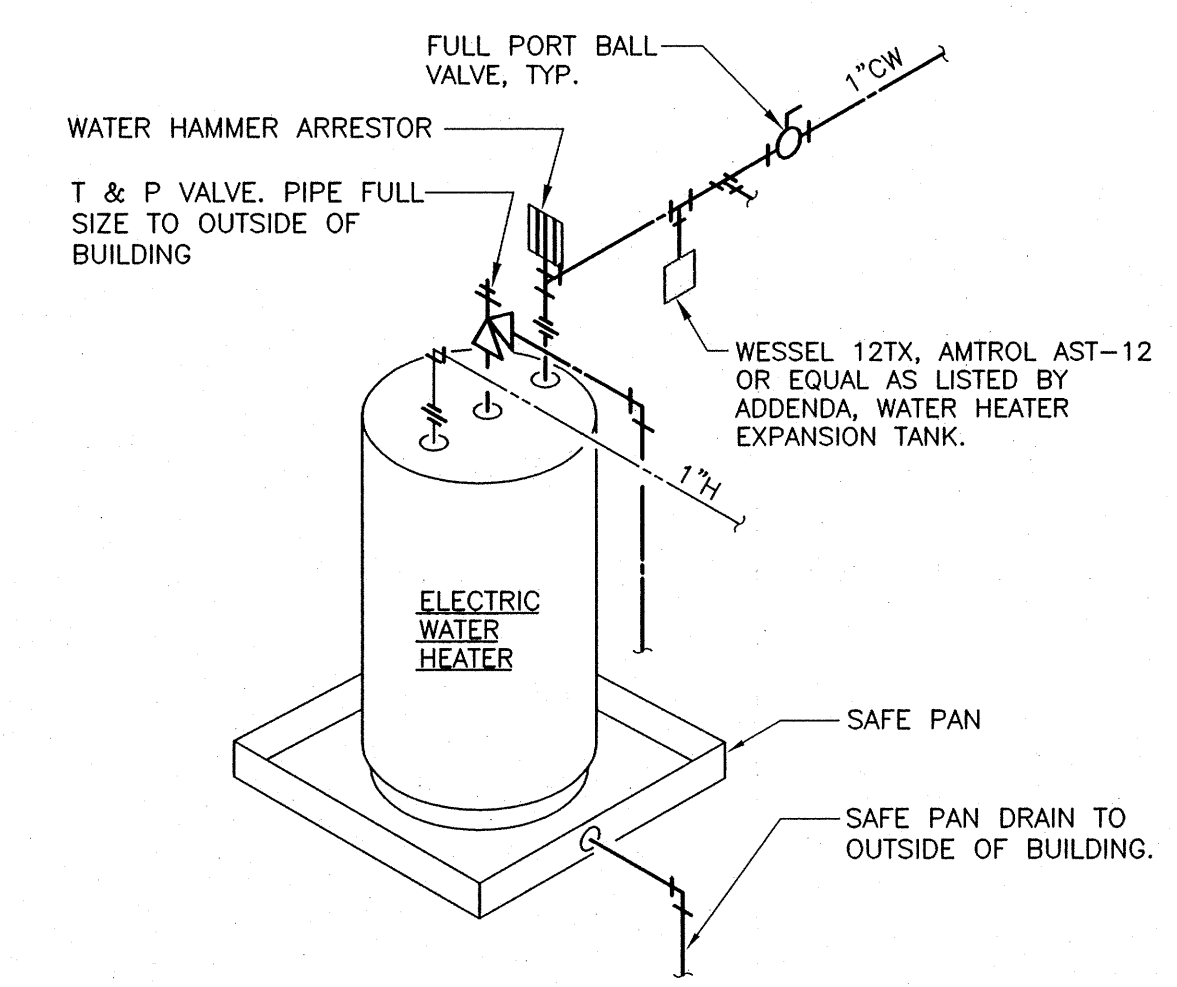
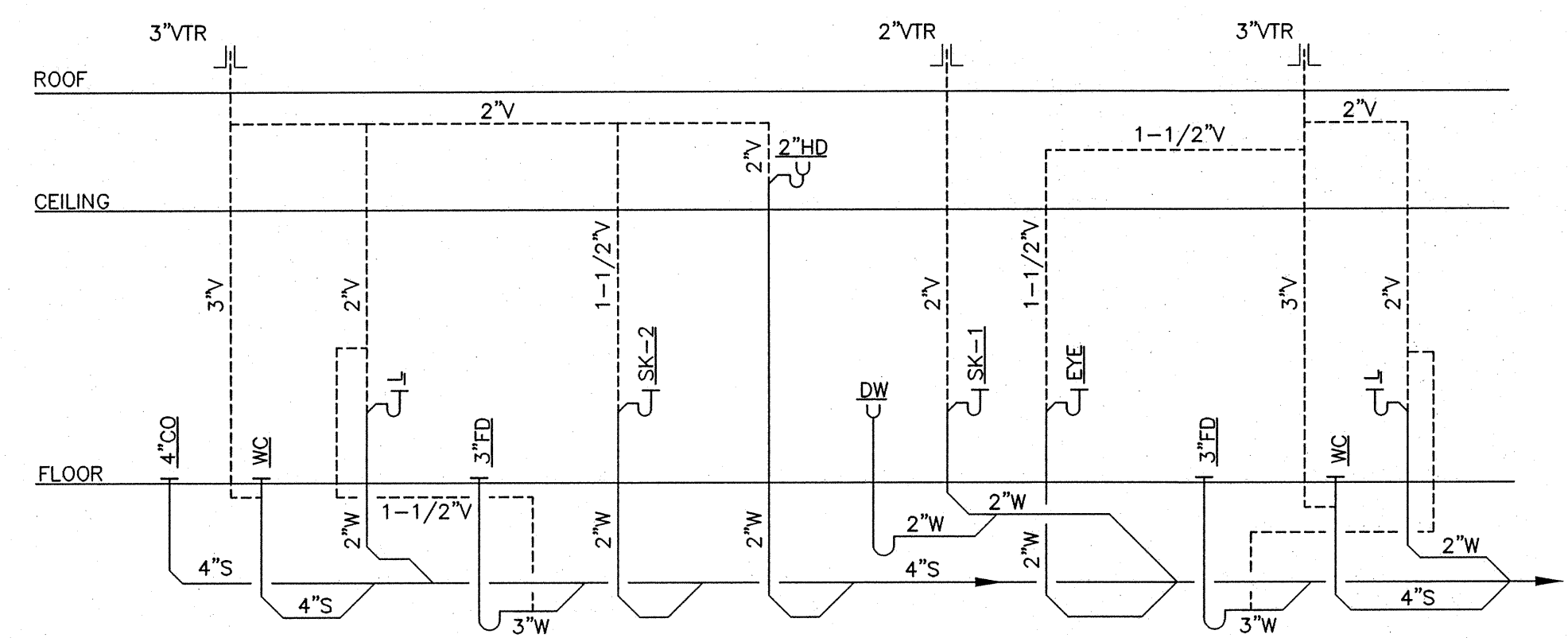
DATE

12 MAR 2008

SHEET

M01

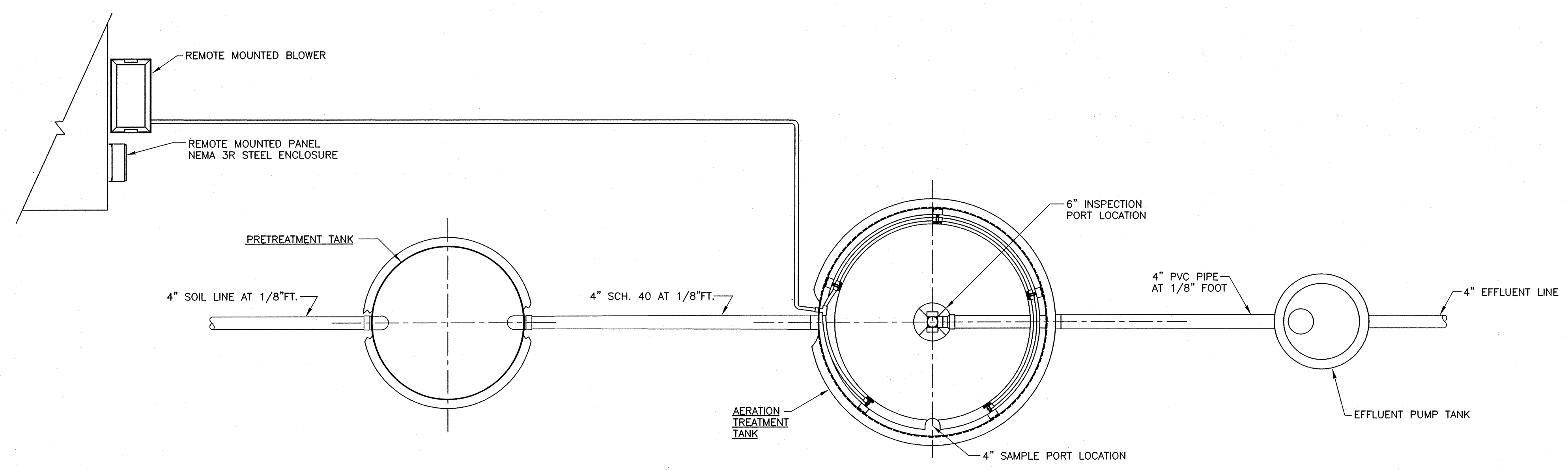




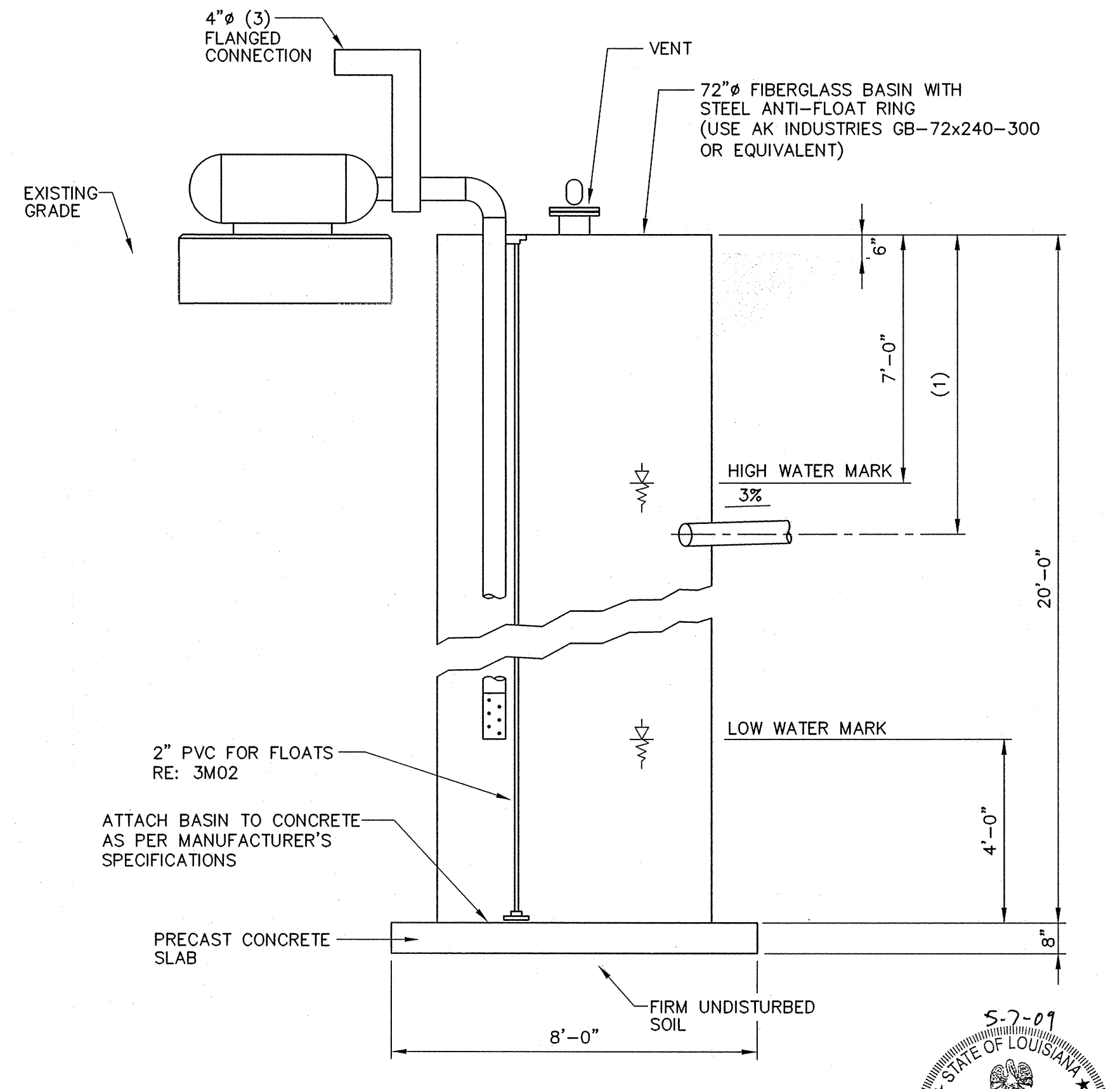
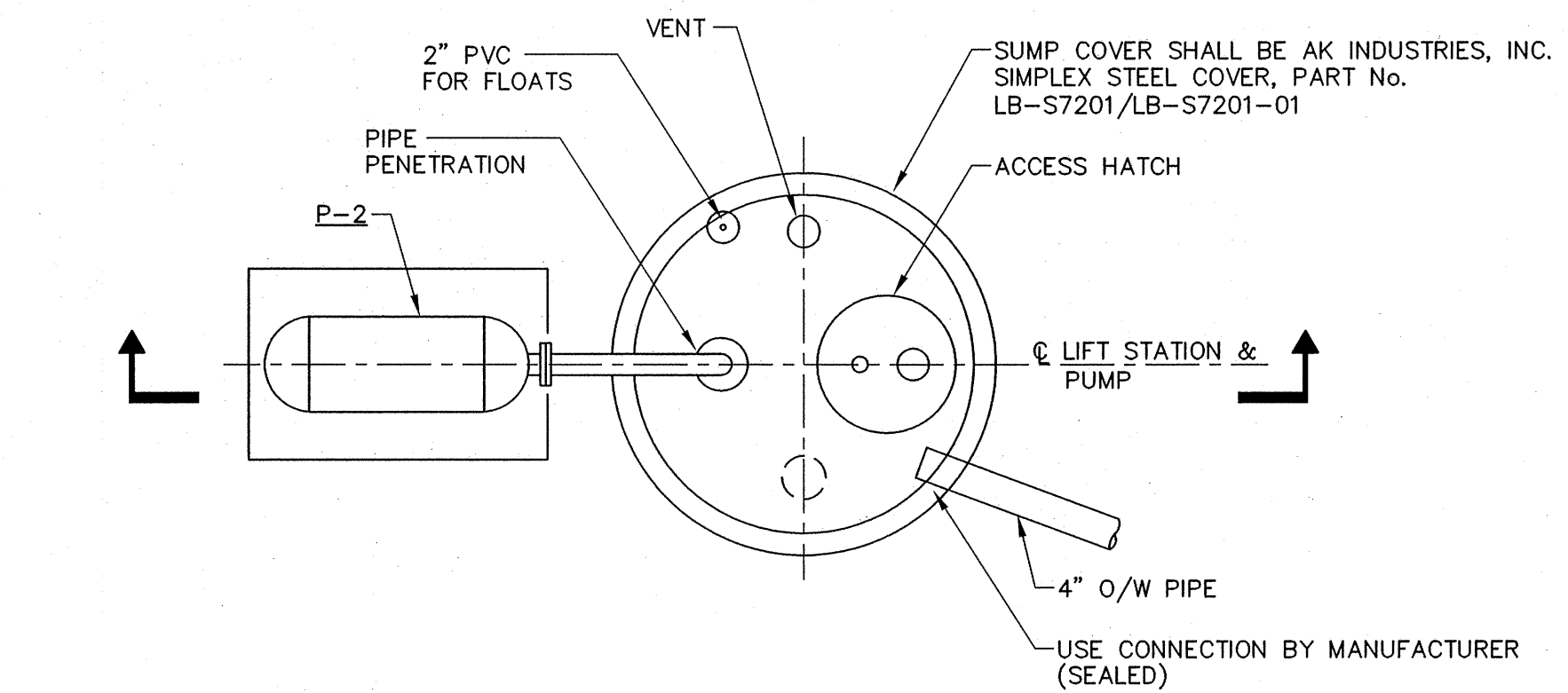
1 PLUMBING RISER DIAGRAM
NOT TO SCALE

2 ELECTRIC WATER HEATER DETAIL
NOT TO SCALE

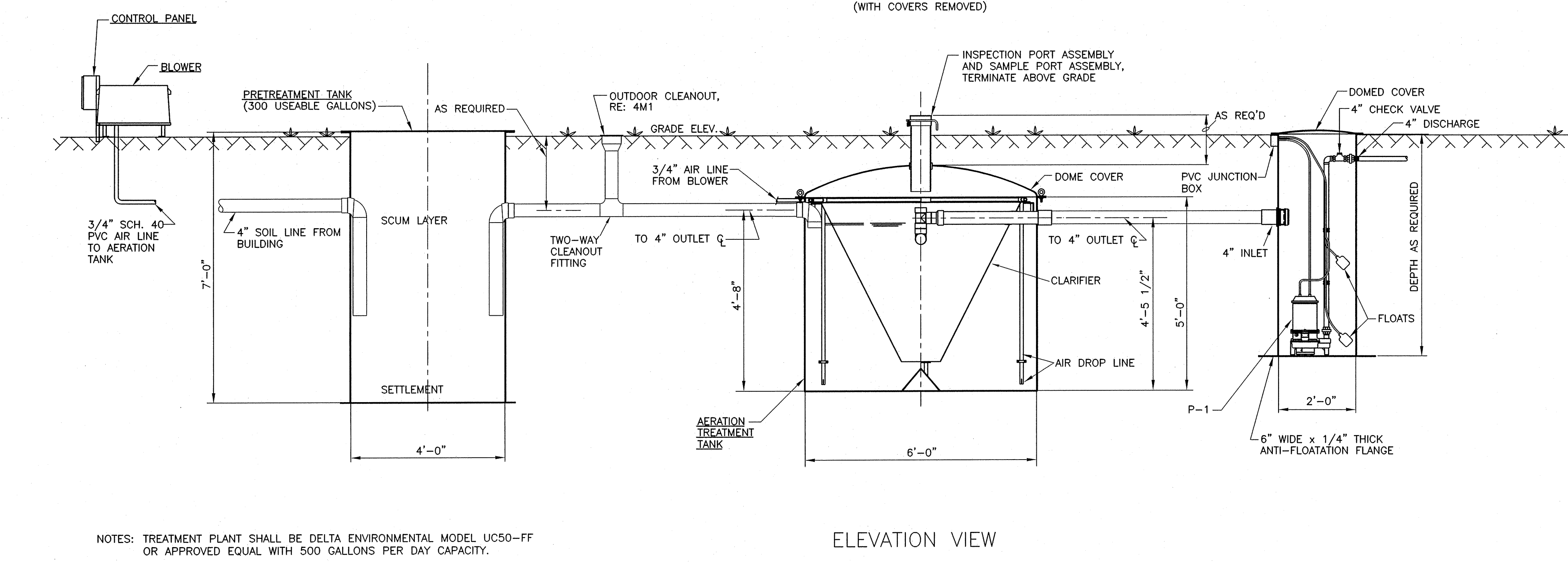
3 LEVEL SWITCH DETAIL
NOT TO SCALE



PLAN VIEW
(WITH COVERS REMOVED)



- NOTES:
- (1) INLET PIPING. VERIFY DEPTH ON JOB PRIOR TO CONSTRUCTION. TYPICAL OF 2.
 - (2) RE: 1MS01 FOR INLET PIPING.
 - (3) PROVIDE SHUT-OFF VALVE AND 4\"/>



ELEVATION VIEW

NOTES: TREATMENT PLANT SHALL BE DELTA ENVIRONMENTAL MODEL UC50-FF OR APPROVED EQUAL WITH 500 GALLONS PER DAY CAPACITY.

4 SEWAGE TREATMENT PLANT SYSTEM DETAIL
1/2"=1'-0"

5 TYPICAL LIFT STATION DETAIL
NOT TO SCALE

PROJ. # 007-0033

REVISIONS	DATE
1 REVISED PER ADDENDUM 5-7-09	

12 MAR 2008
SHEET

M02

