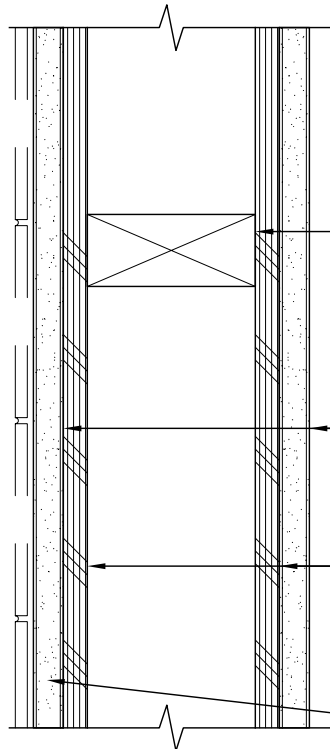


**NOTE:**  
 1. S.S.D. FOR BEARING WALL LOCATIONS AND PLYWOOD SHEAR LOCATIONS



2X4 WD. STUDS @ 16" O.C. U.O.N.  
 2X6 WD. STUDS @ 16" O.C. ALL PLUMBING WALLS, U.O.N., S.S.D. FOR FRAMING DETAILS

5/8" GYP. BD. EACH SIDE, TYP.

PLYWOOD @ SHEAR WALL LOCATIONS, S.S.D.

BACKER BOARD WHERE TILE OCCURS, SEE INTERIOR ELEVATIONS -  
 NOTE: BACKER BOARD OVER GYP. BD AT RATED WALL LOCATIONS -  
 SEE ELEVATIONS FOR DETAILS

TYPE	RATING	DESIGN #	REMARKS
A1	1-HOUR & NR	U309	2 X 4 STUD RATED ONLY WHERE INDICATED ON PLANS
A2	1-HOUR & NR	U309	2 X 6 STUD RATED ONLY WHERE INDICATED ON PLANS
A3	NON RATED	N/A	2 X 8 STUD

IF A FIRE TESTED ASSEMBLY IS REFERENCED, THE CONTRACTOR IS RESPONSIBLE TO PROVIDE THAT ASSEMBLY EXACTLY AS NOTED IN THE TEST DATA. IF THE CONTRACTOR WISHES TO PROVIDE AN ASSEMBLY THAT DIFFERS FROM THE TEST DATA, THAT CONTRACTOR IS RESPONSIBLE TO DO THE RESEARCH TO FIND AN ALTERNATE ASSEMBLY AND PRESENT

**Michael  
 Willis  
 Architects**



MWA JOB #: 200807

REVISION:  
 - -

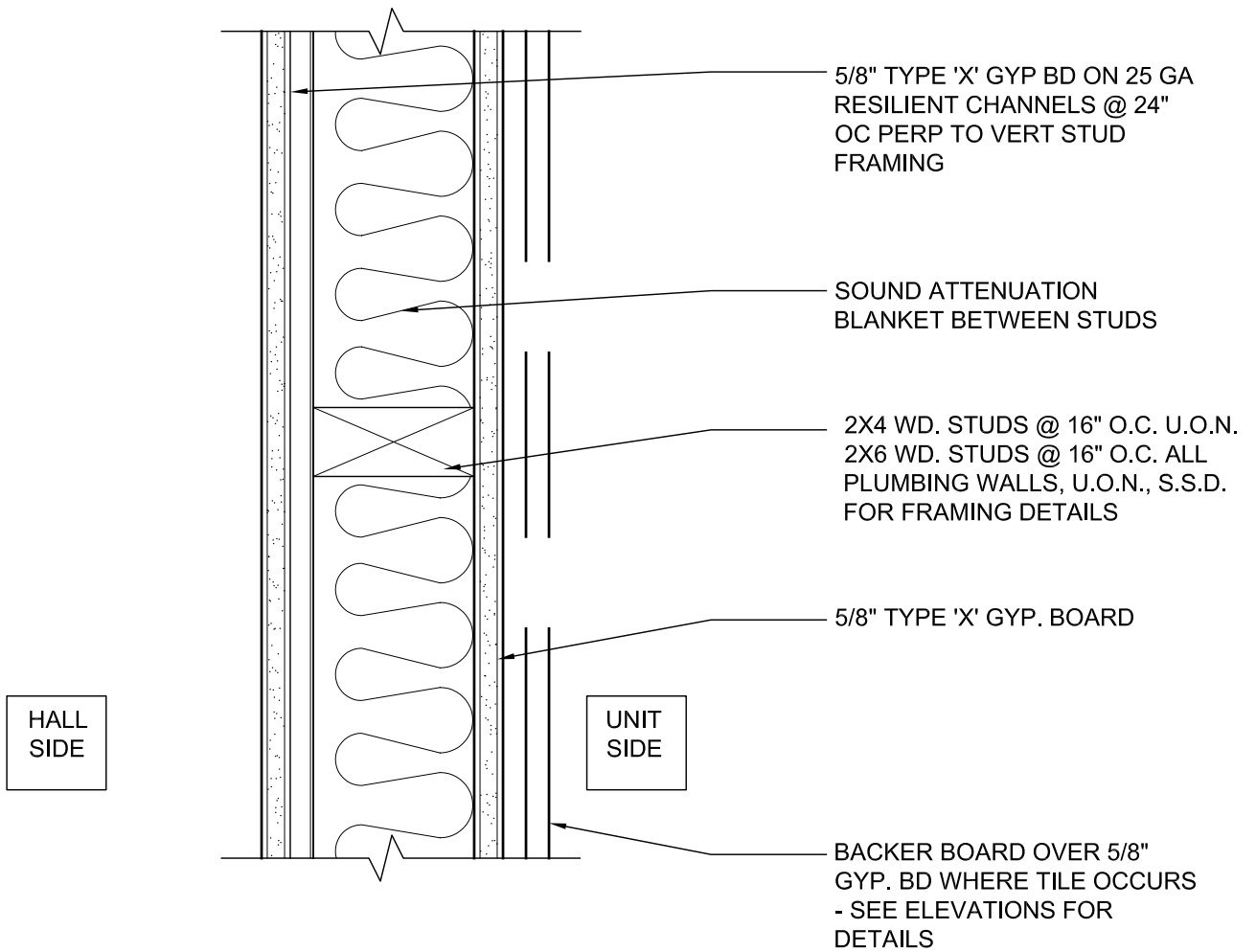
TREME/LAFITTE AND TULANE GRAVIER HOME  
 BUILDING PLAN  
 NEW ORLEANS, LOUISIANA

DATE: 10/09/08

SCALE: 3"=1'-0"


INTERIOR PARTITION TYPE A

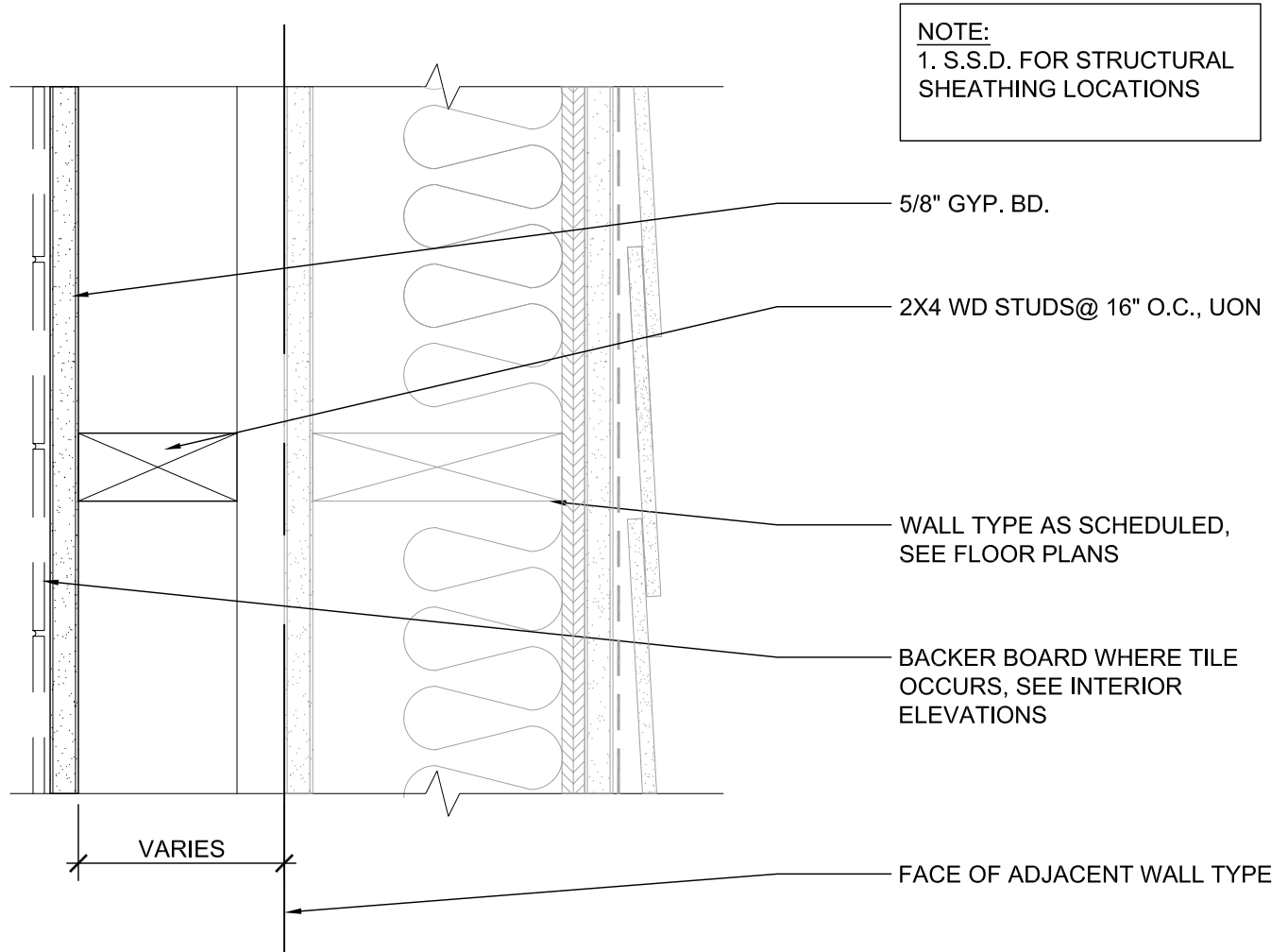
A510.001



TYPE	RATING	DESIGN #	REMARKS
B1	1-HOUR	U311	STC=50 TO 54, PER GA FILE NO. WP3240

IF A FIRE TESTED ASSEMBLY IS REFERENCED, THE CONTRACTOR IS RESPONSIBLE TO PROVIDE THAT ASSEMBLY EXACTLY AS NOTED IN THE TEST DATA. IF THE CONTRACTOR WISHES TO PROVIDE AN ASSEMBLY THAT DIFFERS FROM THE TEST DATA, THAT CONTRACTOR IS RESPONSIBLE TO DO THE RESEARCH TO FIND AN ALTERNATE ASSEMBLY AND PRESENT

	MWA JOB #: 200807	TREME/LAFITTE AND TULANE GRAVIER HOME BUILDING PLAN NEW ORLEANS, LOUISIANA	DATE: 10/09/08
	REVISION: -	INTERIOR PARTITION TYPE B	SCALE: 3"=1'-0"
			A510.002



TYPE	RATING	DESIGN #	REMARKS
C	NON RATED	N/A	NONBEARING PARTITION UON, SSD FOR DETAILS

**Michael  
Willis  
Architects**



MWA JOB #: 200807

REVISION:  
- -

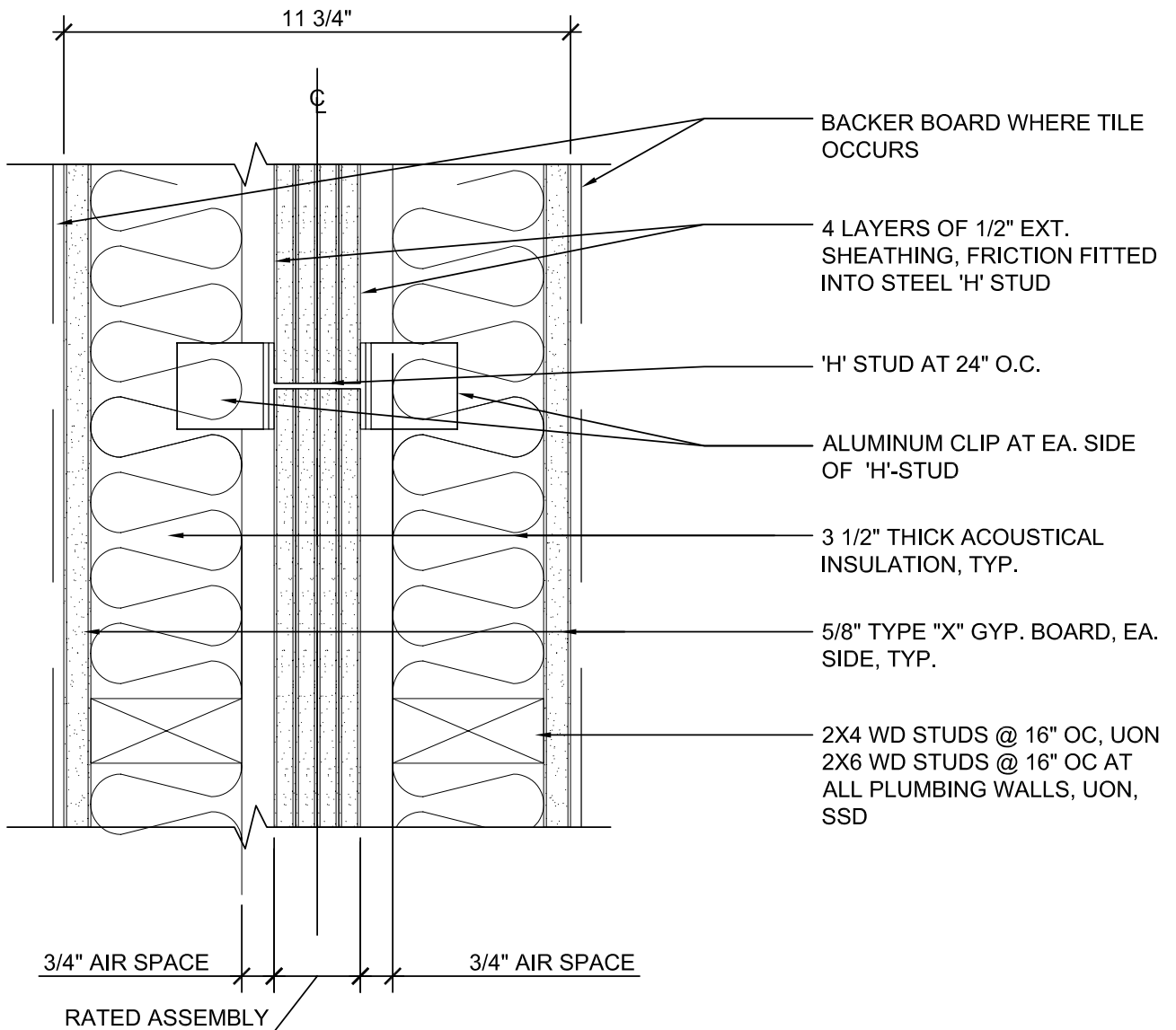
TREME/LAFITTE AND TULANE GRAVIER HOME  
BUILDING PLAN  
NEW ORLEANS, LOUISIANA

DATE: 10/09/08

SCALE: 3"=1'-0"

INTERIOR PARTITION TYPE C

A510.003



TYPE	RATING	DESIGN #	REMARKS
F1	2-HOUR	U366	2 X 4 STUD
F2	2-HOUR	U366	2 X 6 STUD

IF A FIRE TESTED ASSEMBLY IS REFERENCED, THE CONTRACTOR IS RESPONSIBLE TO PROVIDE THAT ASSEMBLY EXACTLY AS NOTED IN THE TEST DATA. IF THE CONTRACTOR WISHES TO PROVIDE AN ASSEMBLY THAT DIFFERS FROM THE TEST DATA, THAT CONTRACTOR IS RESPONSIBLE TO DO THE RESEARCH TO FIND AN ALTERNATE ASSEMBLY AND PRESENT

**Michael  
Willis  
Architects**



MWA JOB #: 200807

REVISION:  
- -

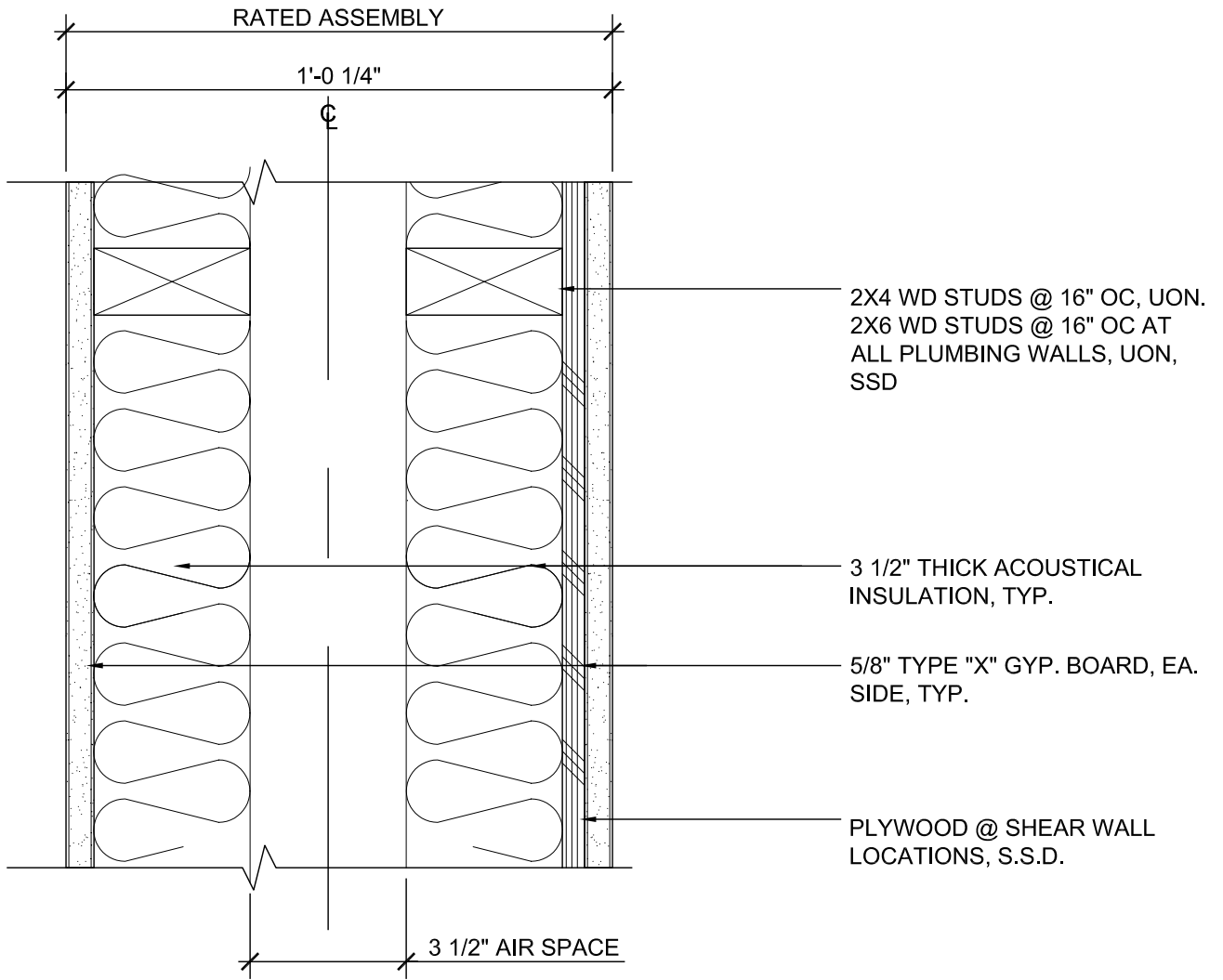
TREME/LAFITTE AND TULANE GRAVIER HOME  
BUILDING PLAN  
NEW ORLEANS, LOUISIANA

DATE: 10/15/08

SCALE: 3"=1'-0"

AREA SEPARATION WALL F

A510.006



TYPE	RATING	DESIGN #	REMARKS
G1	1-HOUR	WP 5512	2 X 4 STUD STC=45 TO 49
G2	1-HOUR	WP 5512	2 X 6 STUD STC=45 TO 49

**Michael  
Willis  
Architects**



MWA JOB #: 200807

REVISION:  
- -

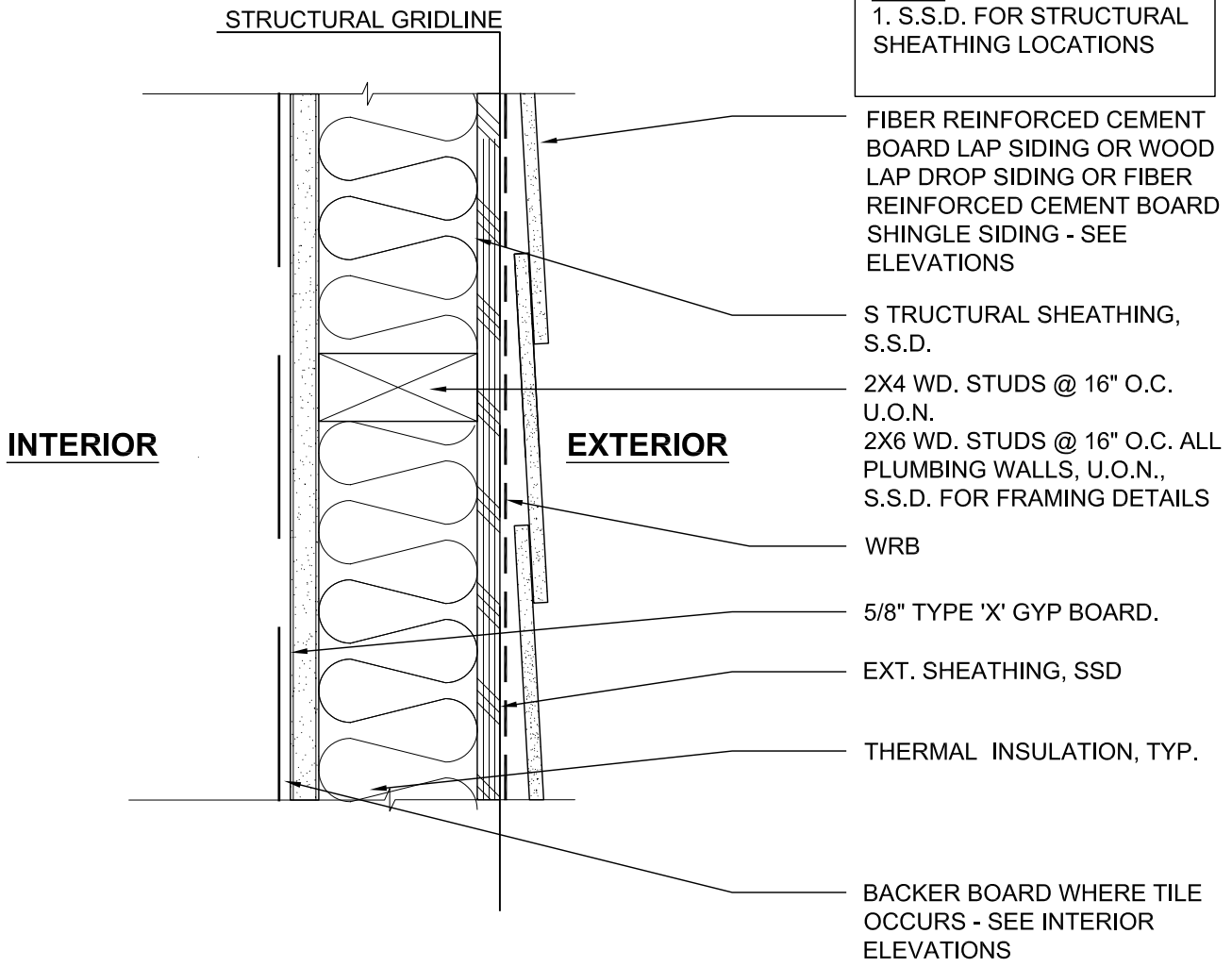
TREME/LAFITTE AND TULANE GRAVIER HOME  
BUILDING PLAN  
NEW ORLEANS, LOUISIANA

INTERIOR PARTITION TYPE G

DATE: 10/09/08

SCALE: 3"=1'-0"


A510.007

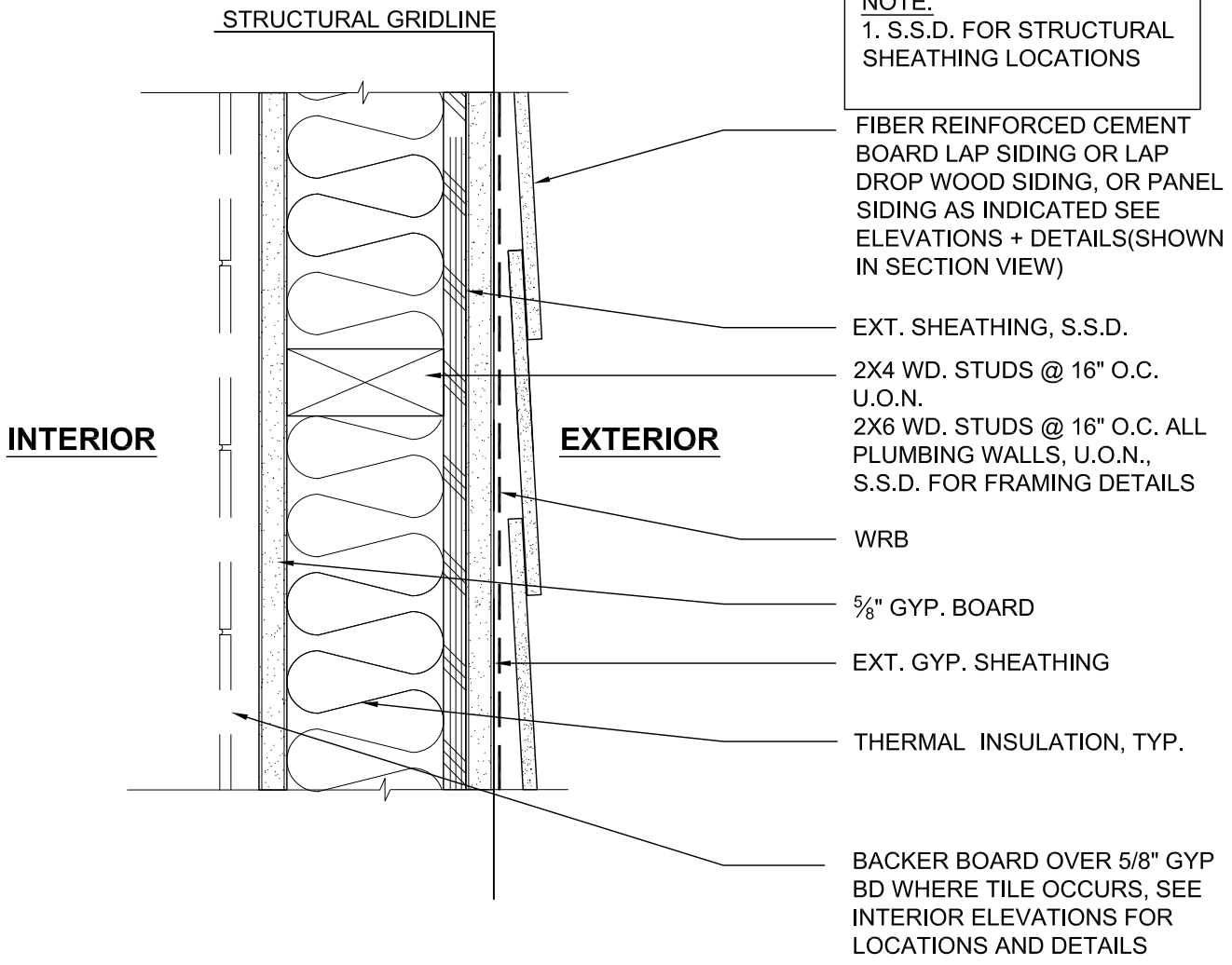


**NOTE:**  
 1. S.S.D. FOR STRUCTURAL SHEATHING LOCATIONS

TYPE	RATING	DESIGN #	REMARKS
J1	NON RATED	N/A	

A510.011 WALL TYPE J.dwg


	MWA JOB #: 200807	TREME/LAFITTE AND TULANE GRAVIER HOME BUILDING PLAN NEW ORLEANS, LOUISIANA	DATE: 10/09/08
	REVISION: -		SCALE: 3"=1'-0"
<b>EXTERIOR WALL TYPE J</b>			<b>A510.011</b>

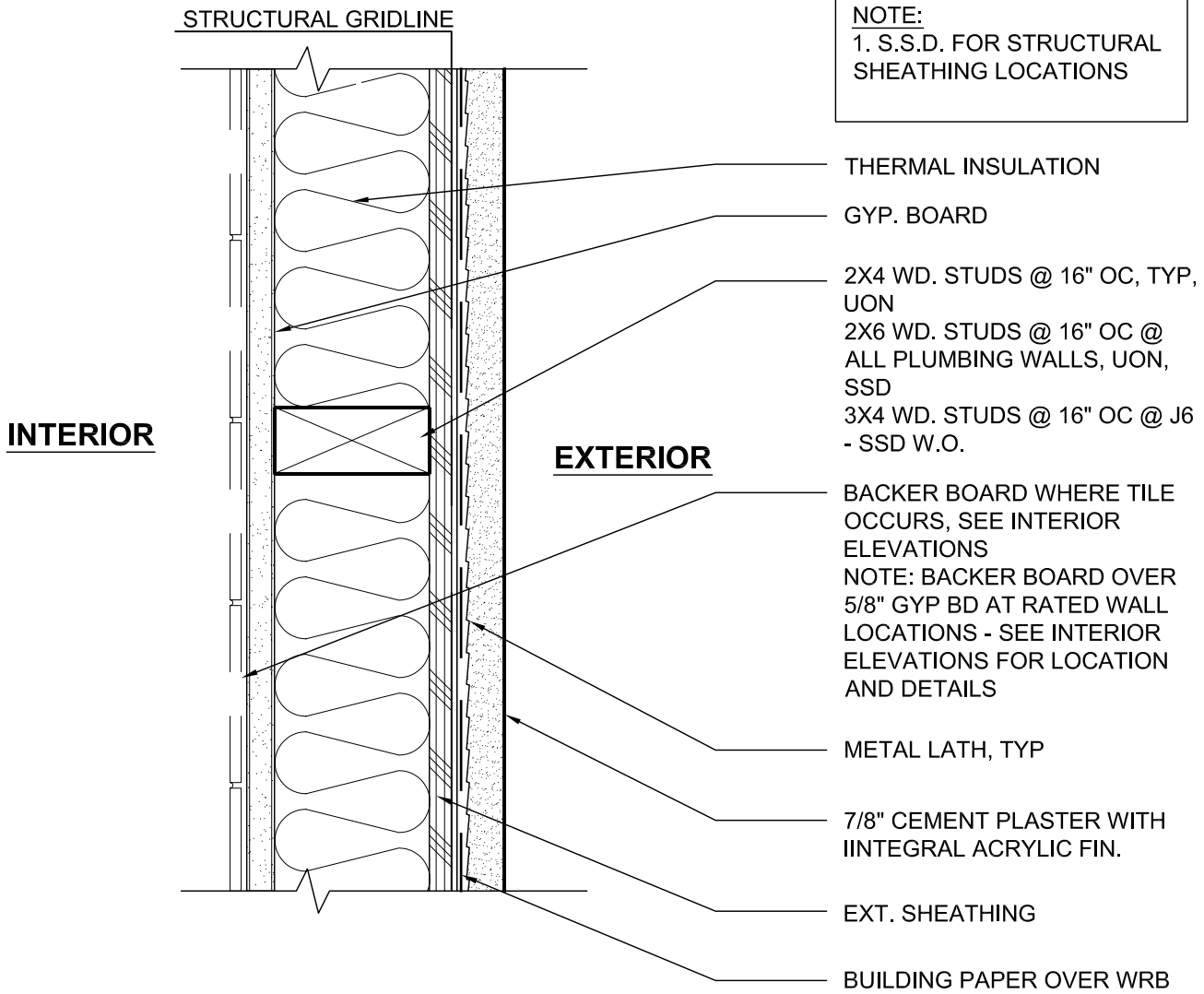


**NOTE:**  
 1. S.S.D. FOR STRUCTURAL SHEATHING LOCATIONS

TYPE	RATING	DESIGN #	REMARKS
K1	1-HOUR	WP 8105	2 X 4 STUD
K2	1-HOUR	WP 8105	2 X 6 STUD

IF A FIRE TESTED ASSEMBLY IS REFERENCED, THE CONTRACTOR IS RESPONSIBLE TO PROVIDE THAT ASSEMBLY EXACTLY AS NOTED IN THE TEST DATA. IF THE CONTRACTOR WISHES TO PROVIDE AN ASSEMBLY THAT DIFFERS FROM THE TEST DATA, THAT CONTRACTOR IS RESPONSIBLE TO DO THE RESEARCH TO FIND AN ALTERNATE ASSEMBLY AND PRESENT IT TO THE ARCHITECT.

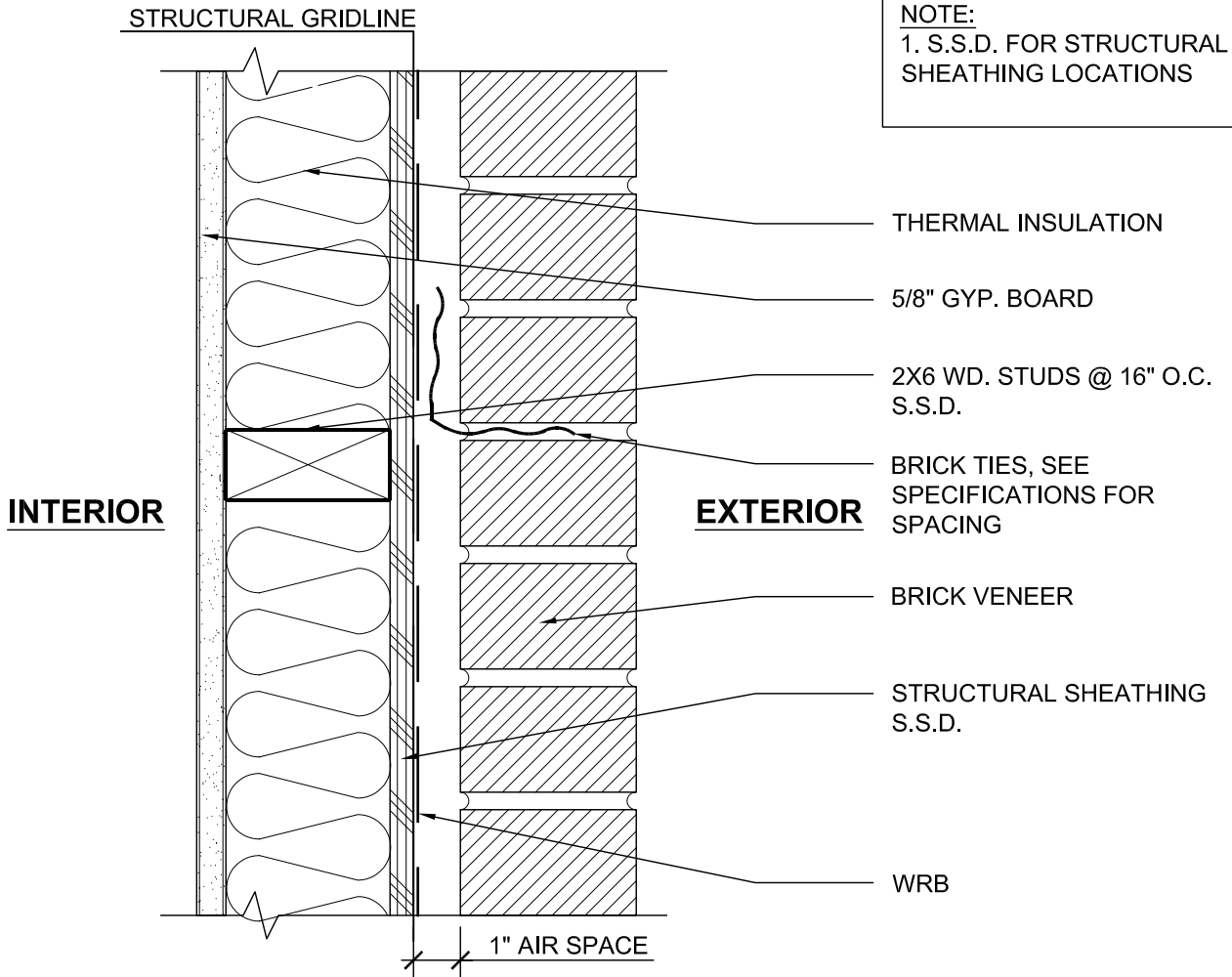
	MWA JOB #: 200807	TREME/LAFITTE AND TULANE GRAVIER HOME BUILDING PLAN NEW ORLEANS, LOUISIANA	DATE: 10/09/08
	REVISION: -	<b>EXTERIOR WALL TYPE K</b>	SCALE: 3"=1'-0"
			<b>A510.012</b>



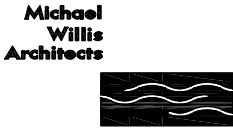
TYPE	RATING	DESIGN #	REMARKS
N1	1-HOUR & NR	U356	2 X 4 STUD - RATED ONLY WHERE INDICATED ON PLANS
N2	1-HOUR & NR	U356	2 X 6 STUD - RATED ONLY WHERE INDICATED ON PLANS

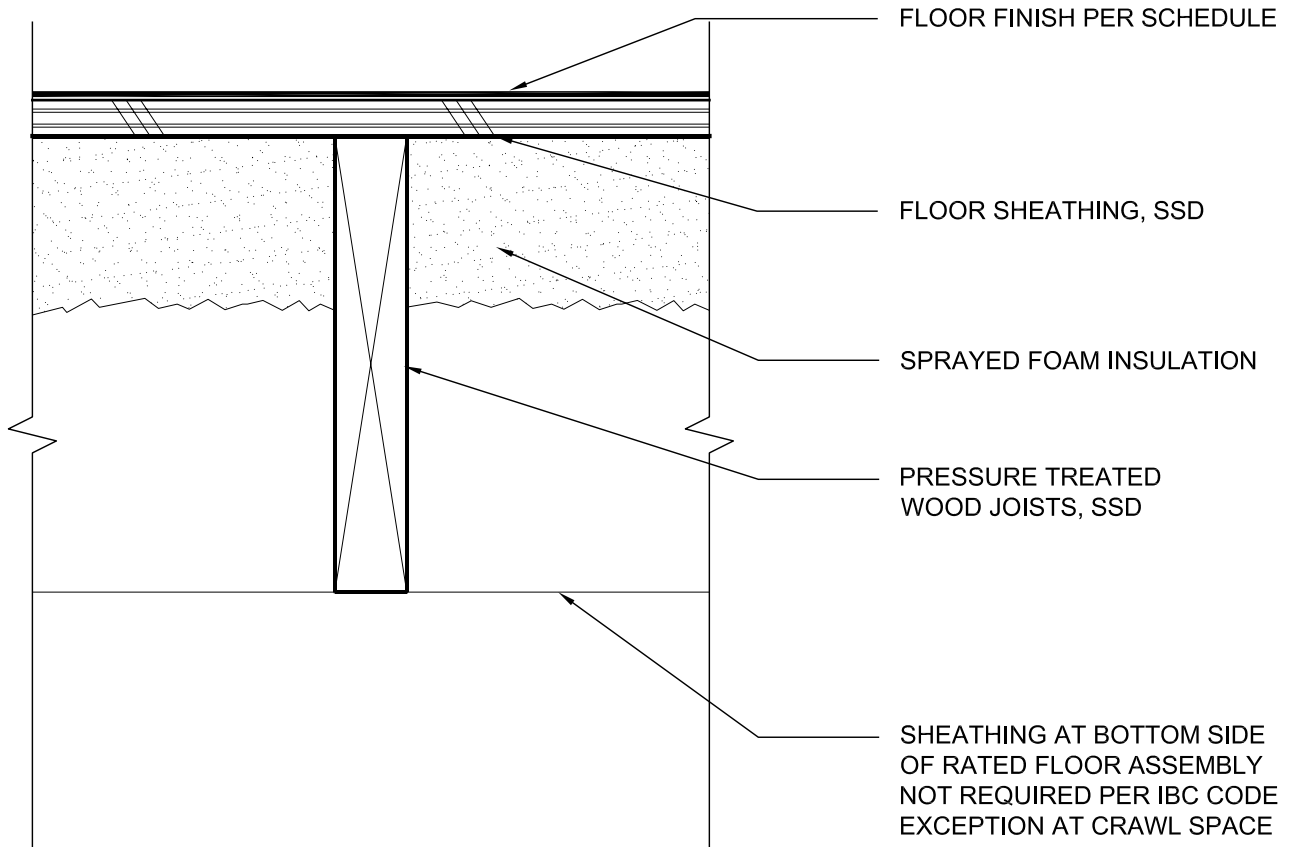
IF A FIRE TESTED ASSEMBLY IS REFERENCED, THE CONTRACTOR IS RESPONSIBLE TO PROVIDE THAT ASSEMBLY EXACTLY AS NOTED IN THE TEST DATA. IF THE CONTRACTOR WISHES TO PROVIDE AN ASSEMBLY THAT DIFFERS FROM THE TEST DATA, THAT CONTRACTOR IS RESPONSIBLE TO DO THE RESEARCH TO FIND AN ALTERNATE ASSEMBLY AND PRESENT

	MWA JOB #: 200807	TREME/LAFITTE AND TULANE GRAVIER HOME BUILDING PLAN NEW ORLEANS, LOUISIANA	DATE: 10/09/08
	REVISION: -		SCALE: 3"=1'-0"
		<b>EXTERIOR WALL TYPE N</b>	<b>A510.015</b>



TYPE	RATING	DESIGN #	REMARKS
Q1	NON-RATED		2 X 6 STUD

	MWA JOB #: 200807	TREME/LAFITTE AND TULANE GRAVIER HOME	DATE: 10/09/08
	REVISION: -	BUILDING PLAN NEW ORLEANS, LOUISIANA	SCALE: 3"=1'-0"
		EXTERIOR WALL TYPE Q	A510.017



TYPE	RATING	DESIGN #	REMARKS
S	NON RATED	N/A	
S	1 HOUR	IBC TABLE 720.1(3)	ASSEMBLY NO. 21 & IBC 711.3.3( AT BUILDING J6 ONLY)

IF A FIRE TESTED ASSEMBLY IS REFERENCED, THE CONTRACTOR IS RESPONSIBLE TO PROVIDE THAT ASSEMBLY EXACTLY AS NOTED IN THE TEST DATA. IF THE CONTRACTOR WISHES TO PROVIDE AN ASSEMBLY THAT DIFFERS FROM THE TEST DATA, THAT CONTRACTOR IS RESPONSIBLE TO DO THE RESEARCH TO FIND AN ALTERNATE ASSEMBLY AND PRESENT

**Michael  
Willis  
Architects**



MWA JOB #: 200807

REVISION:  
- -

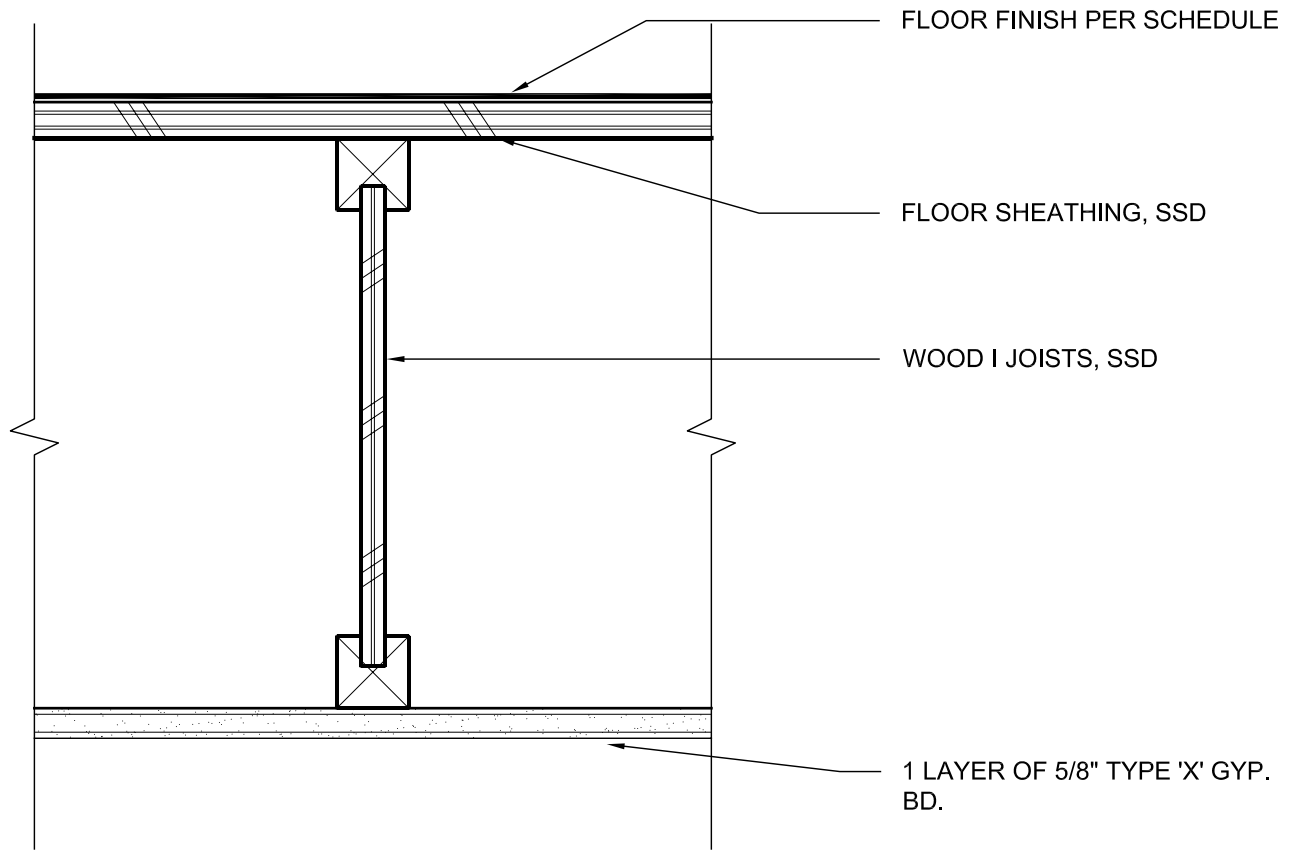
TREME/LAFITTE AND TULANE GRAVIER HOME  
BUILDING PLAN  
NEW ORLEANS, LOUISIANA

DATE: 10/09/08


SCALE: 3"=1'-0"

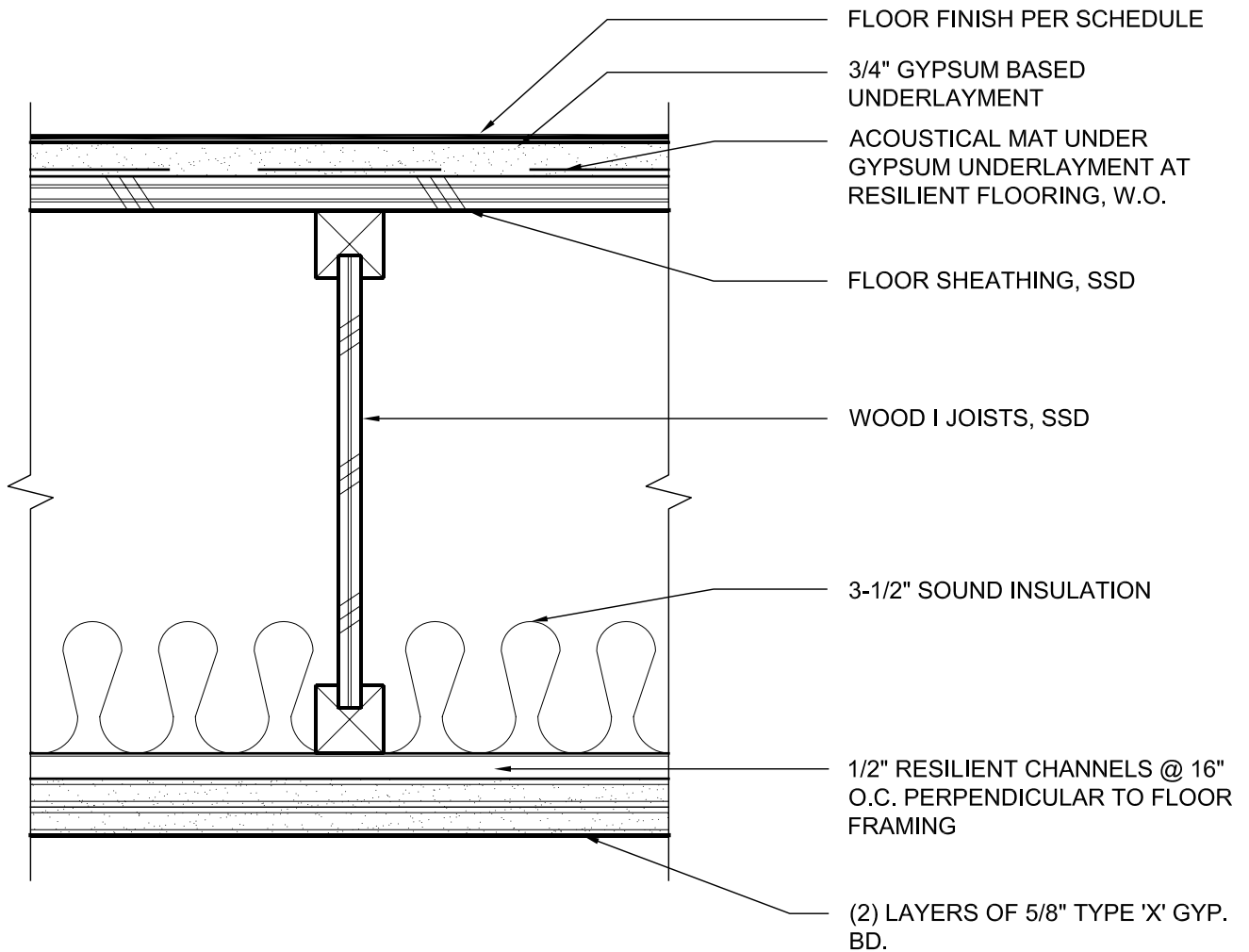
**FLOOR CEILING TYPE S**

**A510.021**



TYPE	RATING	DESIGN #	REMARKS
T	NON-RATED	N/A	

	MWA JOB #: 200807	<b>TREME/LAFITTE AND TULANE GRAVIER HOME</b> BUILDING PLAN NEW ORLEANS, LOUISIANA	DATE: 10/09/08
	REVISION: - -		SCALE: 3"=1'-0"
<b>FLOOR CEILING TYPE T</b>			<b>A510.022</b>



TYPE	RATING	DESIGN #	REMARKS
U	1-HOUR	ESR-1153 ASSEMBLY 'B'	STC=58 IIC = 54 (@CPT AND PAD); IIC = 50 (@RES. FL.)

IF A FIRE TESTED ASSEMBLY IS REFERENCED, THE CONTRACTOR IS RESPONSIBLE TO PROVIDE THAT ASSEMBLY EXACTLY AS NOTED IN THE TEST DATA. IF THE CONTRACTOR WISHES TO PROVIDE AN ASSEMBLY THAT DIFFERS FROM THE TEST DATA, THAT CONTRACTOR IS RESPONSIBLE TO DO THE RESEARCH TO FIND AN ALTERNATE ASSEMBLY AND PRESENT

**Michael  
Willis  
Architects**



MWA JOB #: 200807

REVISION:  
- -

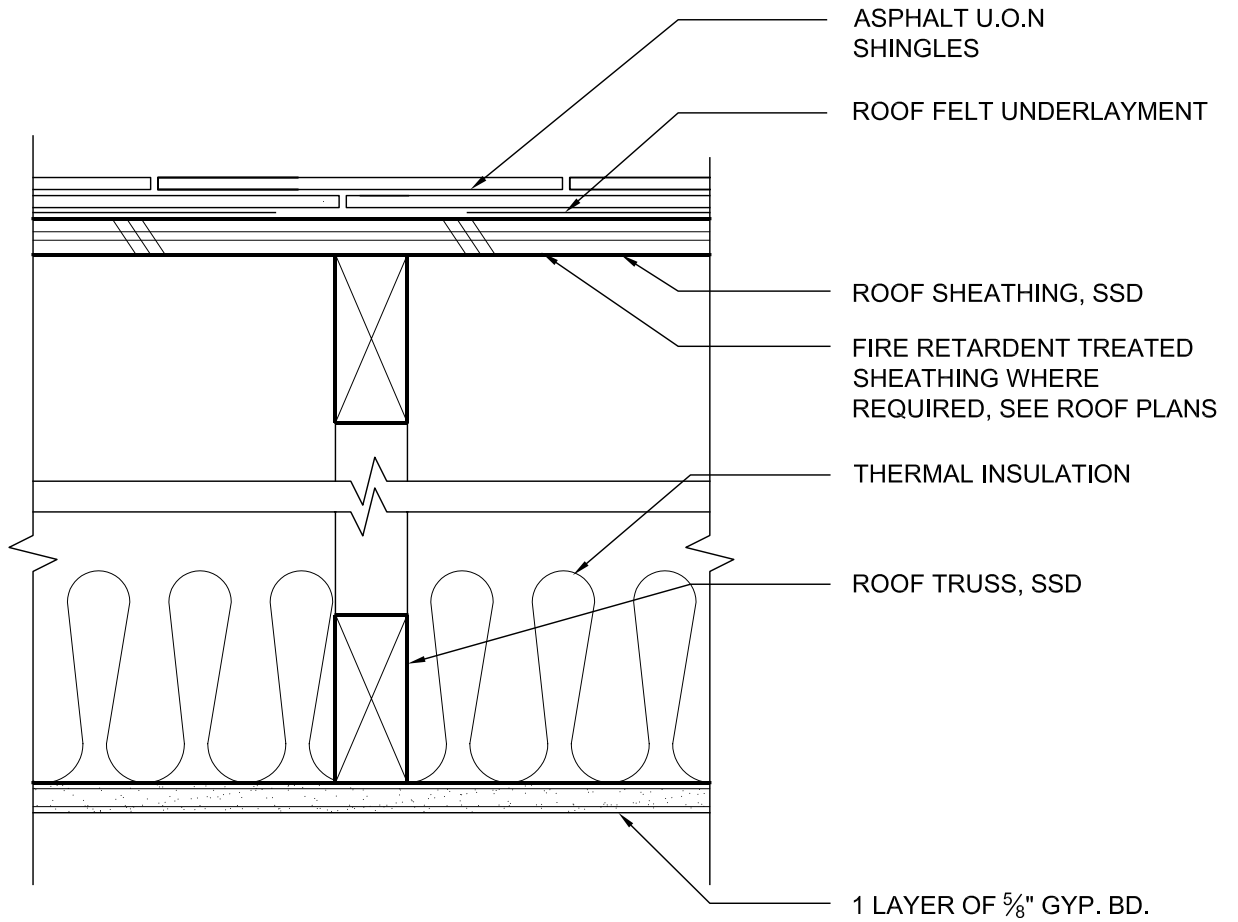
TREME/LAFITTE AND TULANE GRAVIER HOME  
BUILDING PLAN  
NEW ORLEANS, LOUISIANA

DATE: 10/09/08

SCALE: 3"=1'-0"

**FLOOR CEILING TYPE U**

**A510.023**



TYPE	RATING	DESIGN #	REMARKS
W	NON RATED	N/A	

**Michael  
Willis  
Architects**



MWA JOB #: 200807

REVISION:  
- -

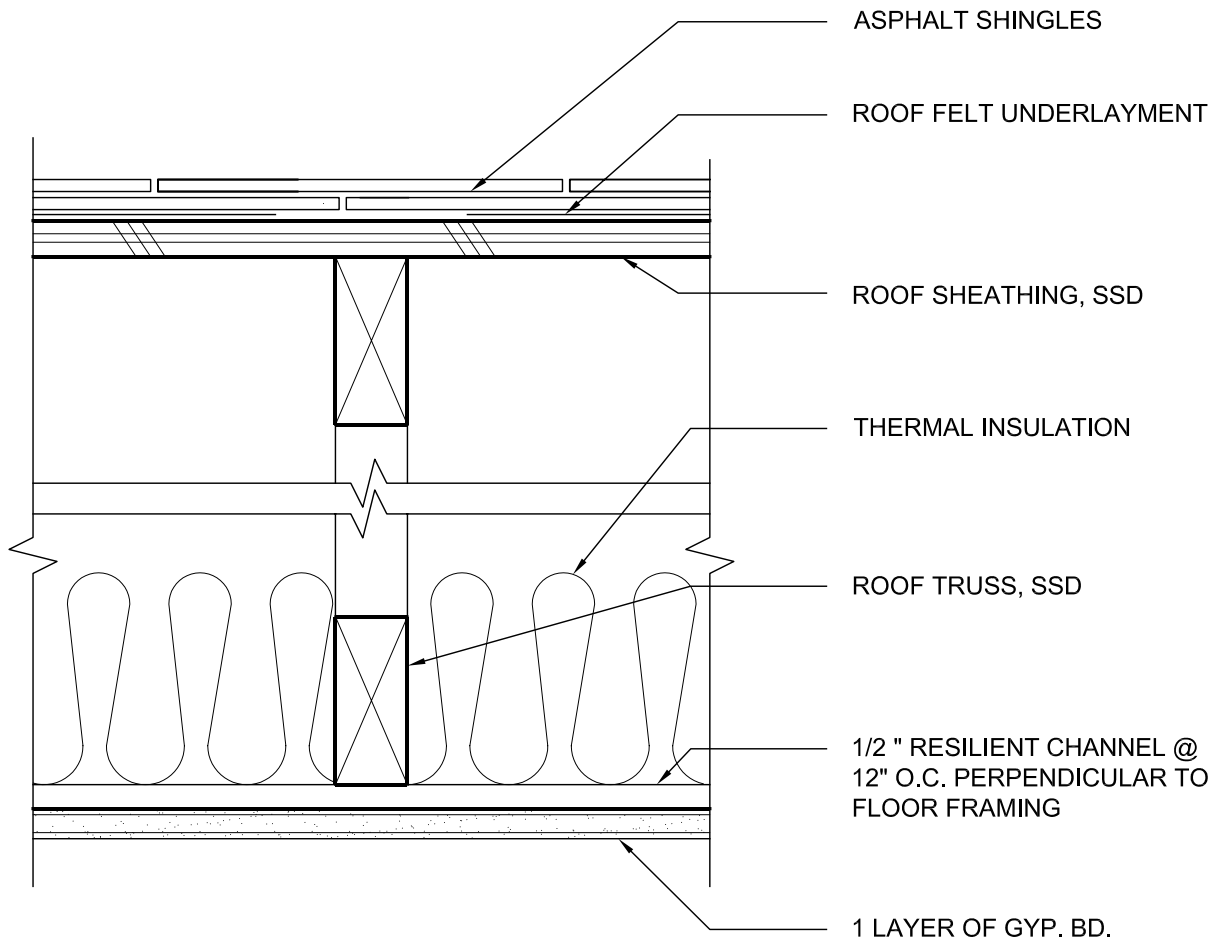
TREME/LAFITTE AND TULANE GRAVIER HOME  
BUILDING PLAN  
NEW ORLEANS, LOUISIANA

DATE: 10/09/08

SCALE: 3"=1'-0"

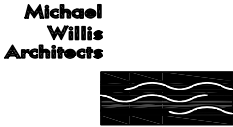
**ROOF CEILING TYPE W**

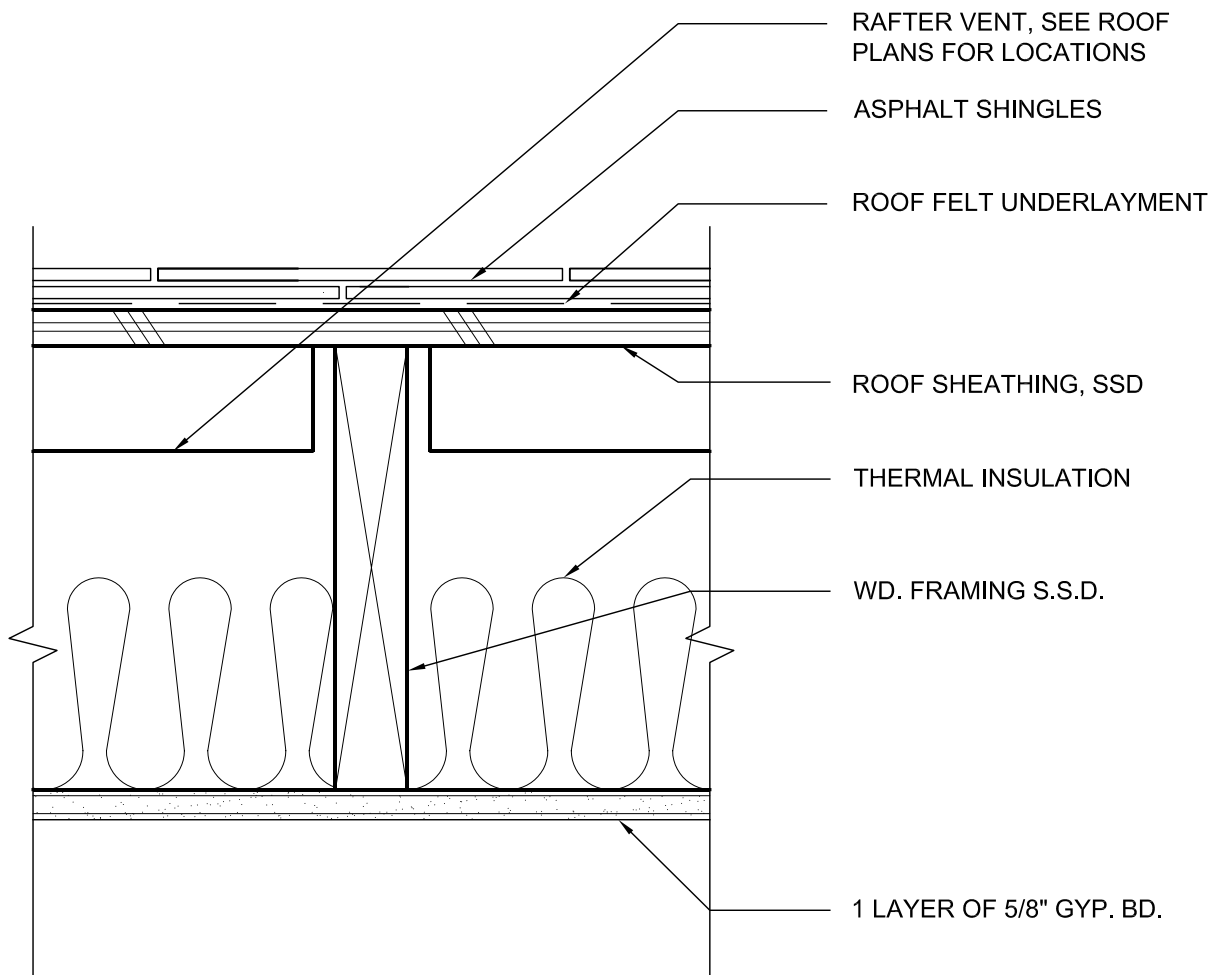
**A510.031**



TYPE	RATING	DESIGN #	REMARKS
X	1 HOUR	UL P522	

IF A FIRE TESTED ASSEMBLY IS REFERENCED, THE CONTRACTOR IS RESPONSIBLE TO PROVIDE THAT ASSEMBLY EXACTLY AS NOTED IN THE TEST DATA. IF THE CONTRACTOR WISHES TO PROVIDE AN ASSEMBLY THAT DIFFERS FROM THE TEST DATA, THAT CONTRACTOR IS RESPONSIBLE TO DO THE RESEARCH TO FIND AN ALTERNATE ASSEMBLY AND PRESENT

	MWA JOB #: 200807	TREME/LAFITTE AND TULANE GRAVIER HOME	DATE: 10/09/08
	REVISION: - -	BUILDING PLAN NEW ORLEANS, LOUISIANA	SCALE: 3"=1'-0"
		<b>ROOF CEILING TYPE X</b>	<b>A510.032</b>



TYPE	RATING	DESIGN #	REMARKS
Y	NON RATED	N/A	

**Michael  
Willis  
Architects**



MWA JOB #: 200807

REVISION:  
- -

TREME/LAFITTE AND TULANE GRAVIER HOME  
BUILDING PLAN  
NEW ORLEANS, LOUISIANA

DATE: 10/09/08

SCALE: 3"=1'-0"

**ROOF CEILING TYPE Y**

**A510.033**