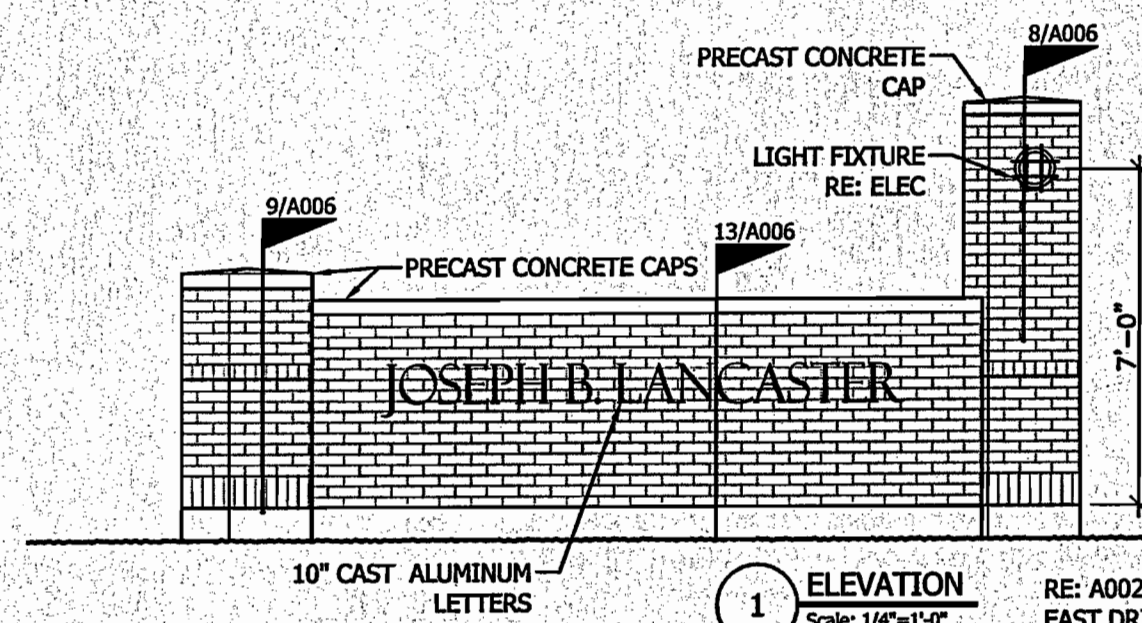
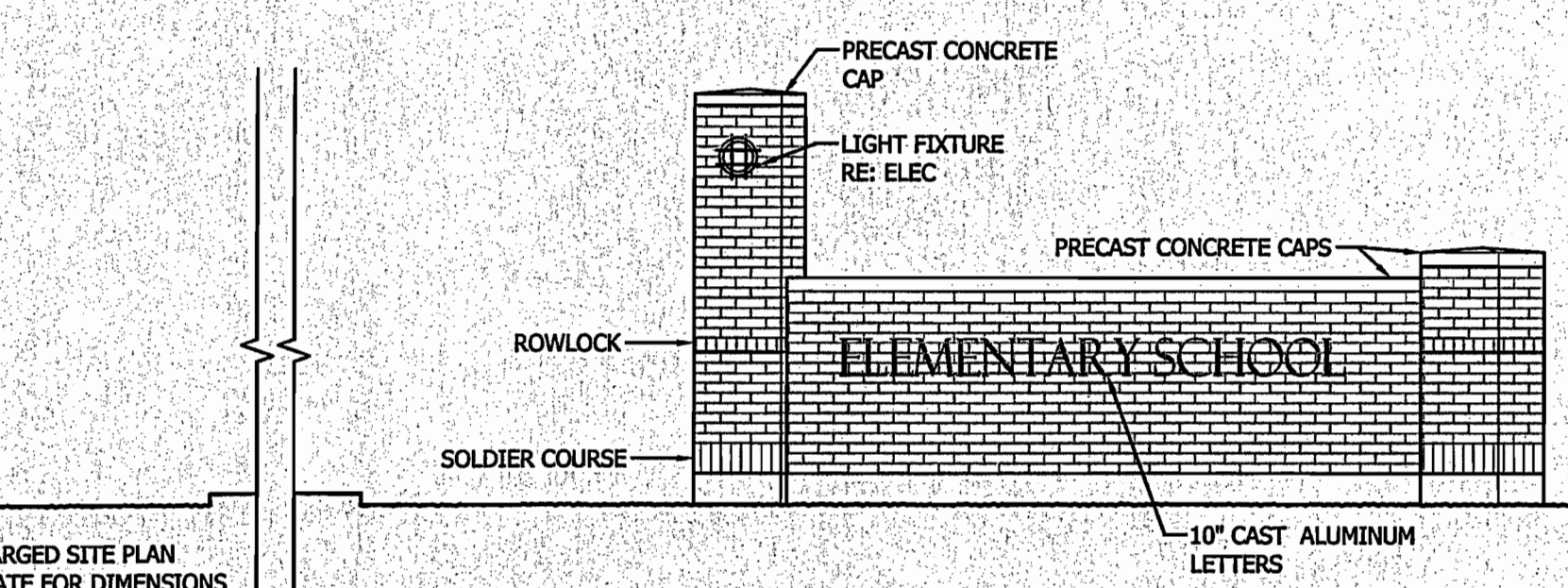


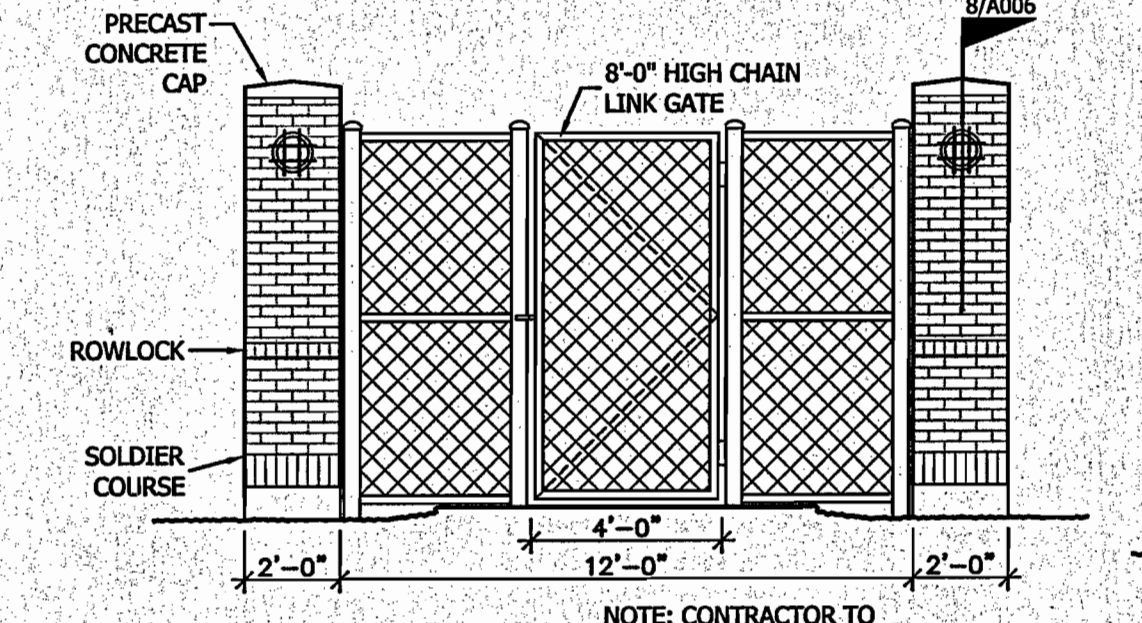
110000 - St. Tammany Parish School Board 0825 - Joseph B. Lancaster Elementary School Drawing 0825-CA1 0825-A006R1.dwg JUL 08, 2009 - 10:55am



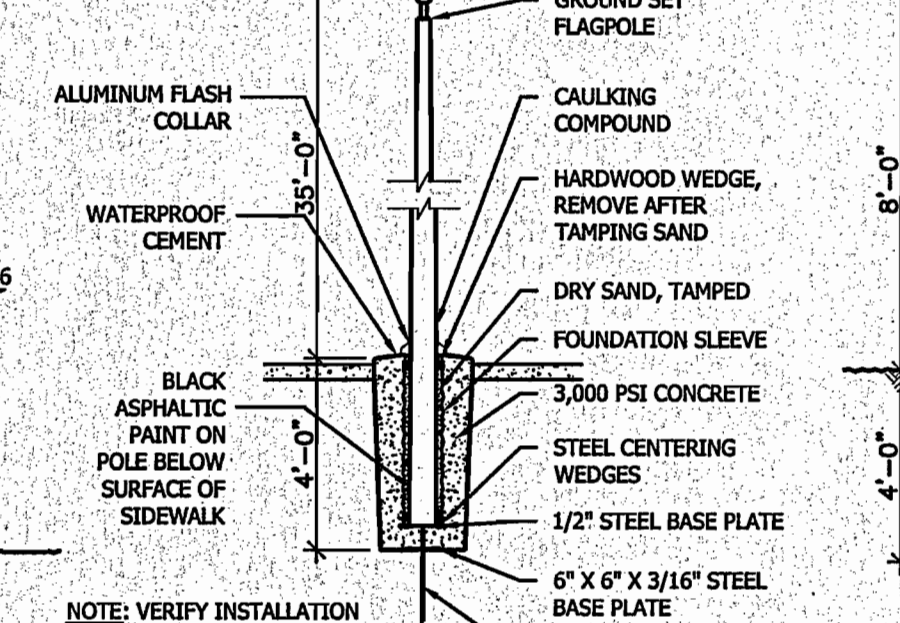
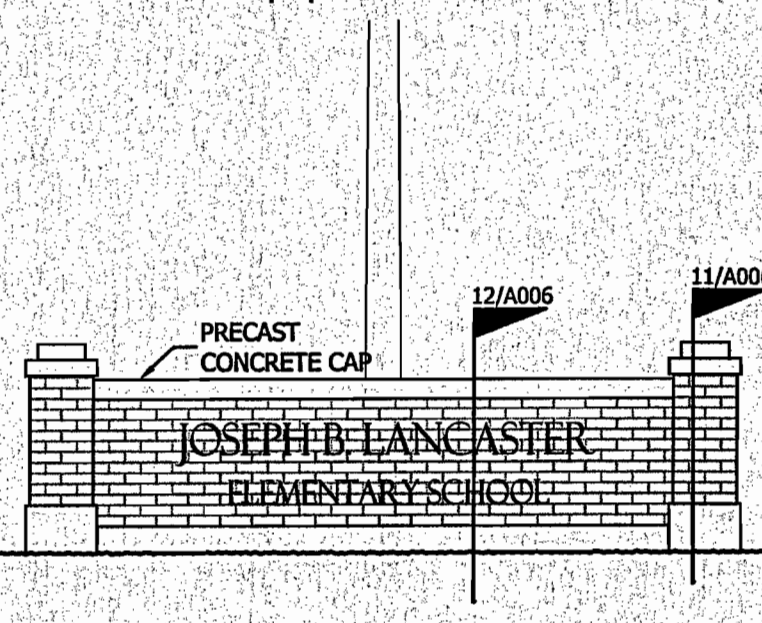
1 ELEVATION
Scale: 1/4" = 1'-0"



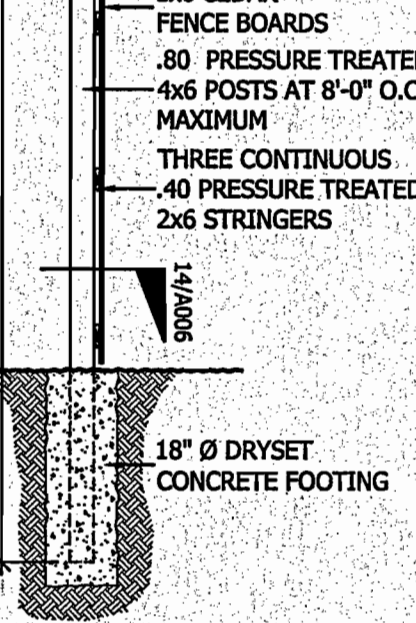
3 MONUMENT ELEVATION
Scale: 1/4" = 1'-0"



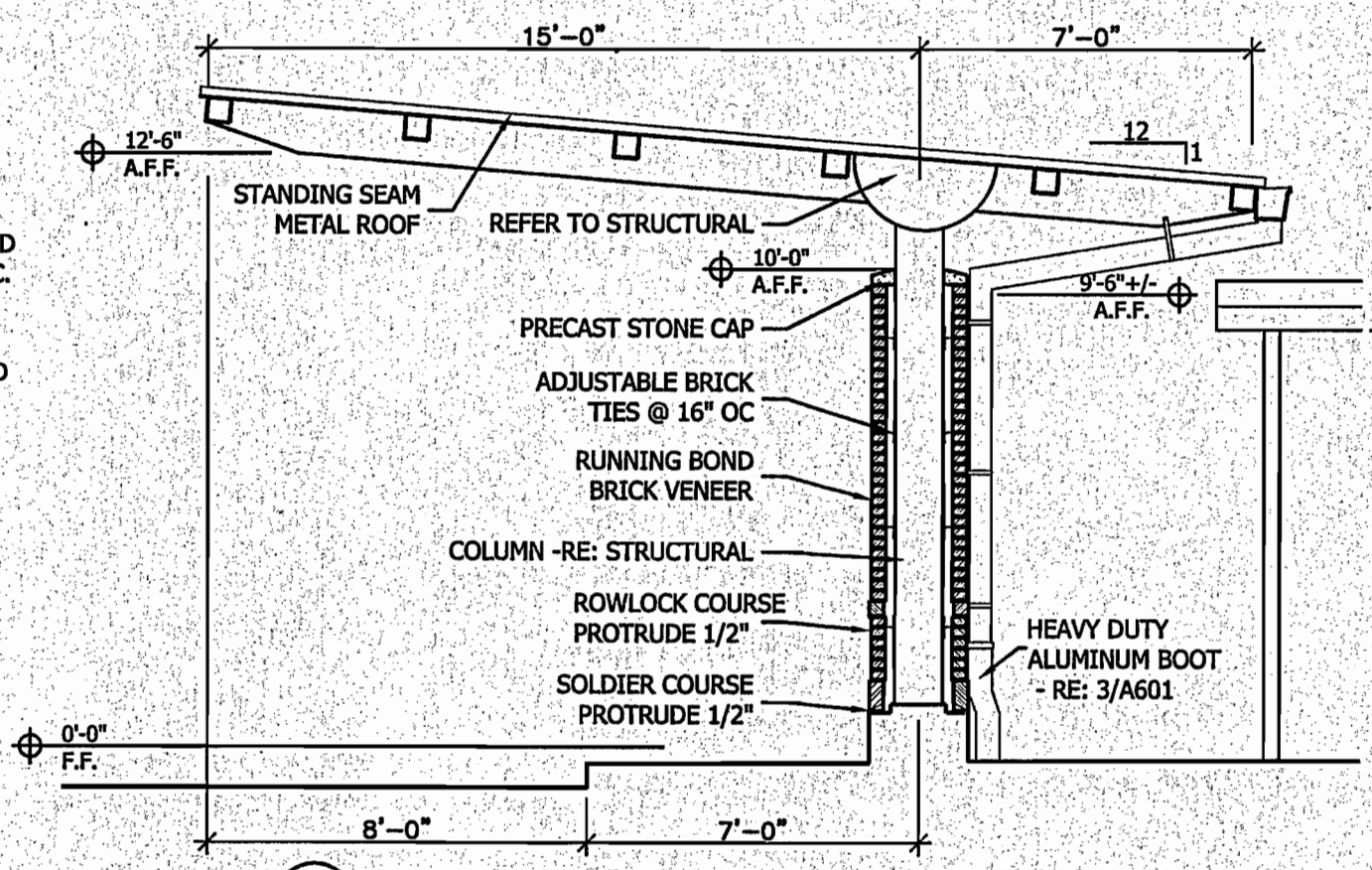
2 ELEVATION
Scale: 1/4" = 1'-0"



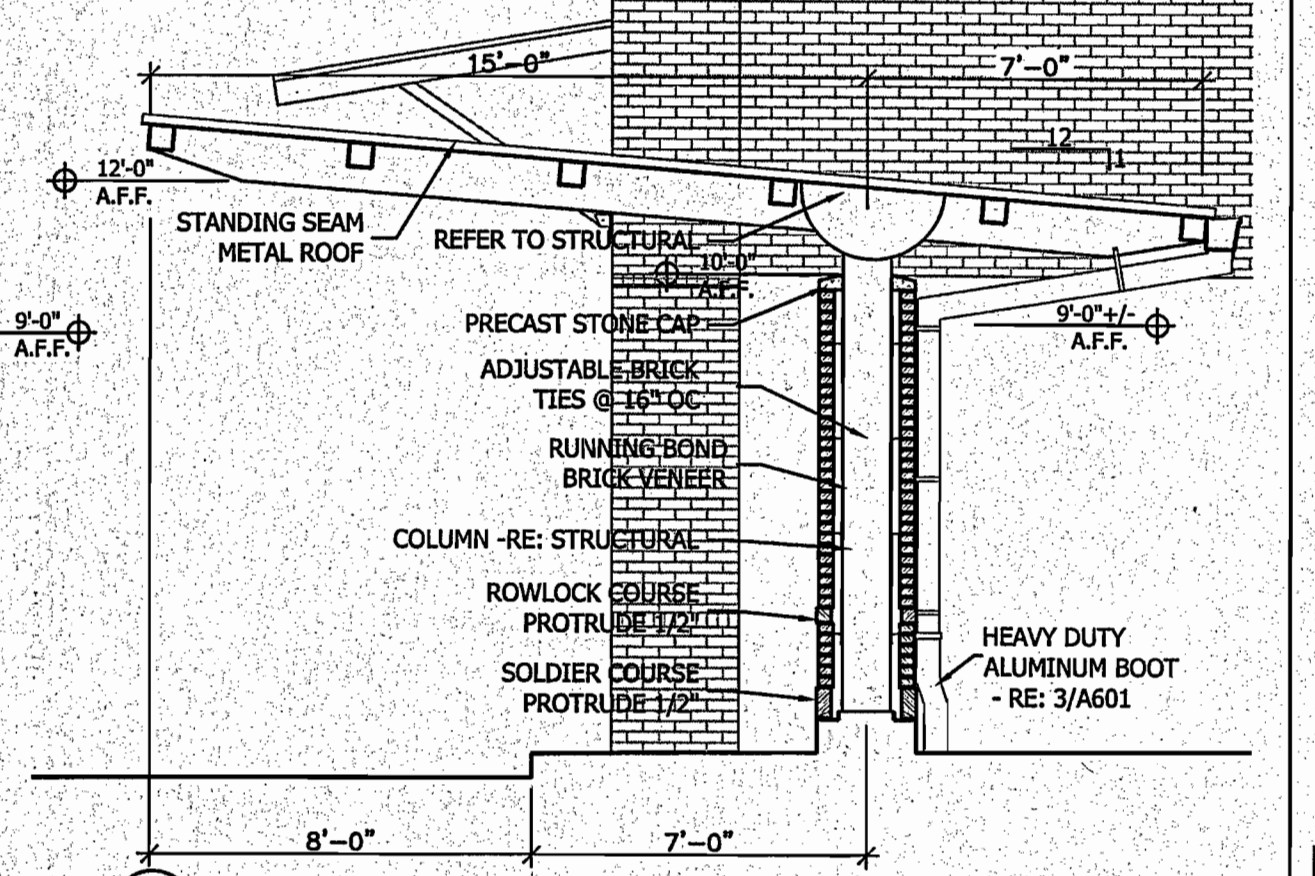
4 FLAGPOLE DETAIL
Scale: 1/4" = 1'-0"



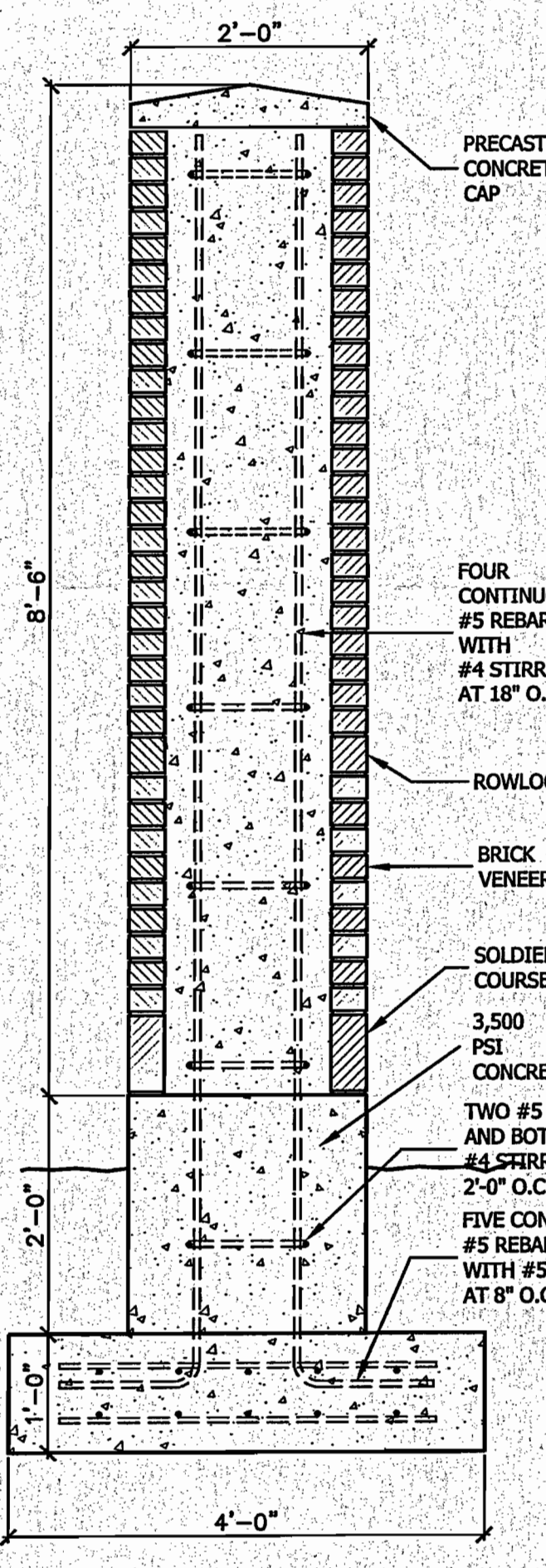
5 TYPICAL FENCE SECTION
Scale: 1/4" = 1'-0"



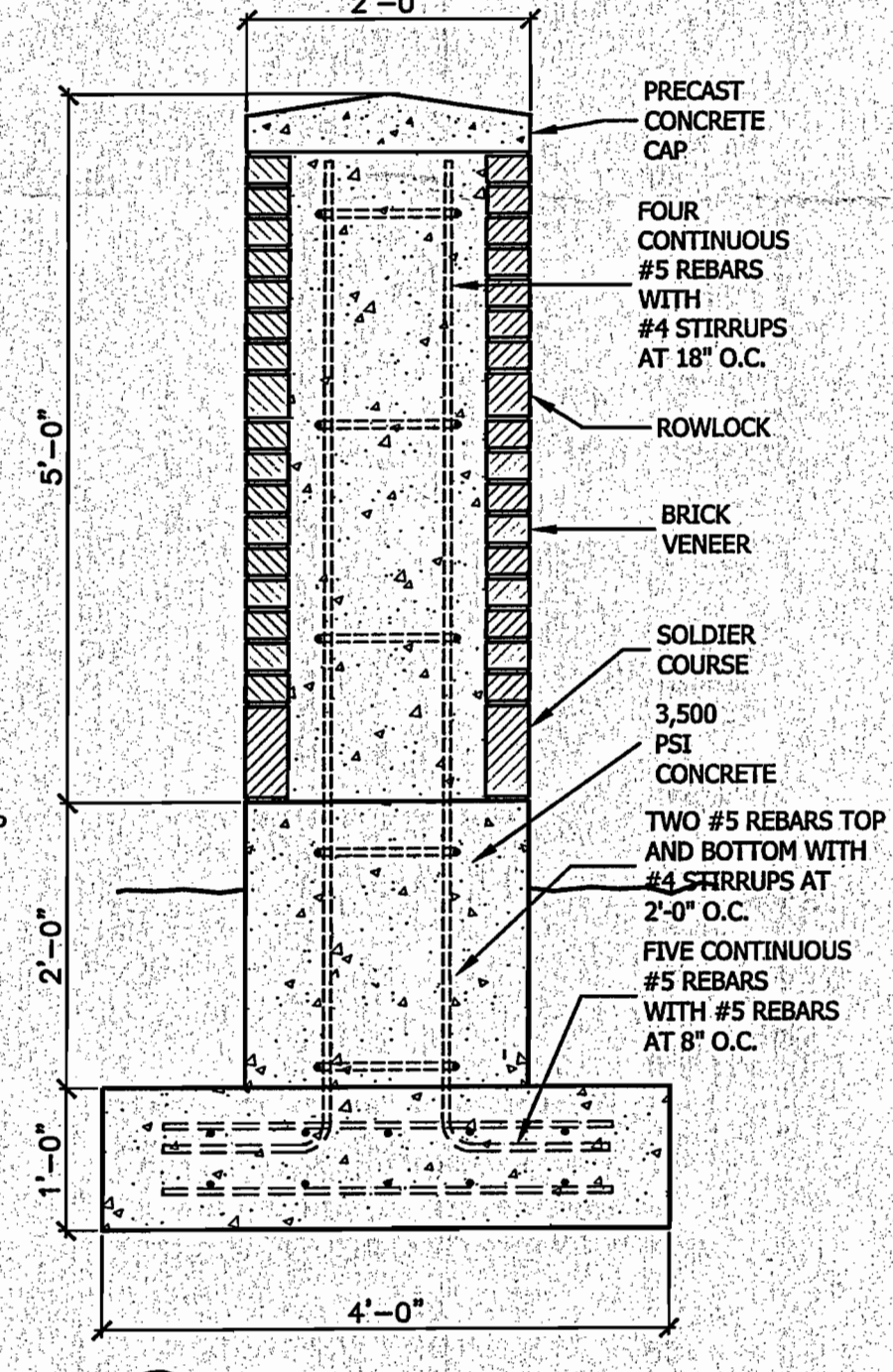
6 SECTION
Scale: 1/4" = 1'-0"



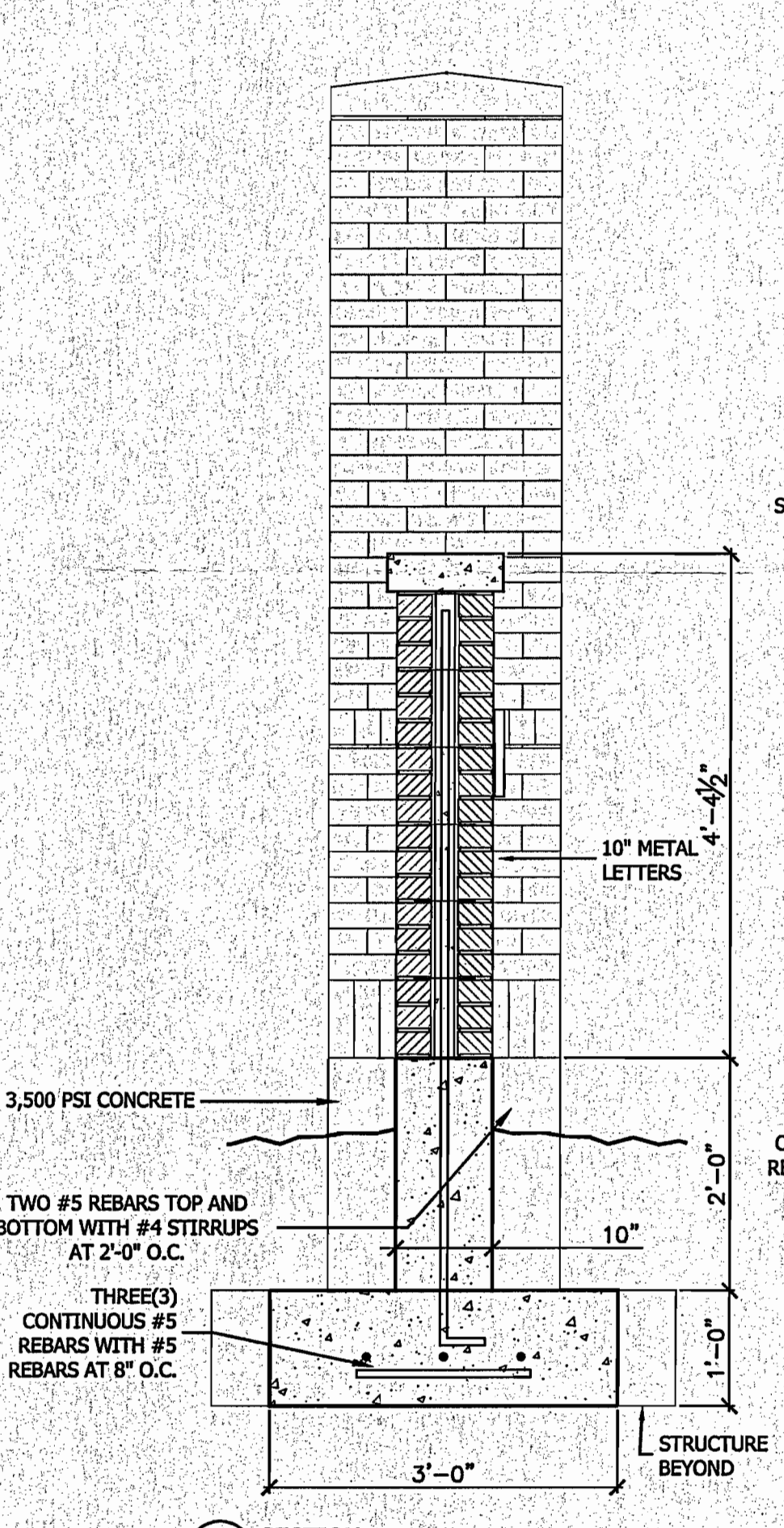
7 SECTION
Scale: 1/4" = 1'-0"



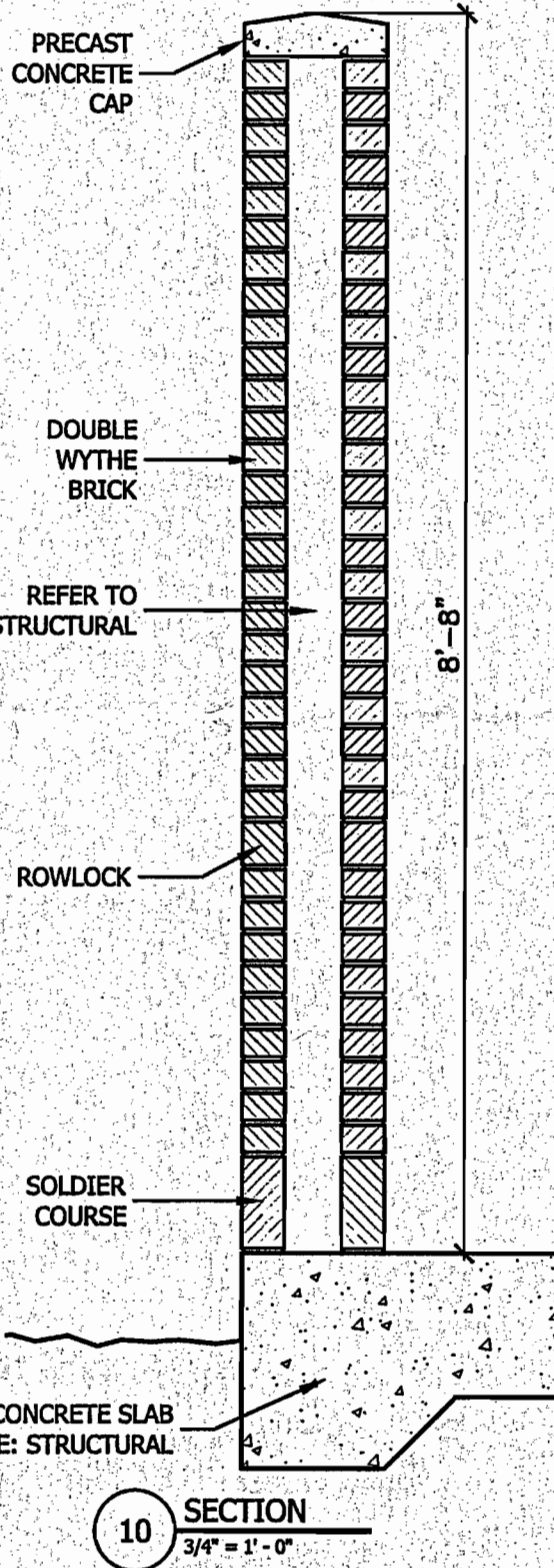
8 SECTION
Scale: 3/4" = 1'-0"



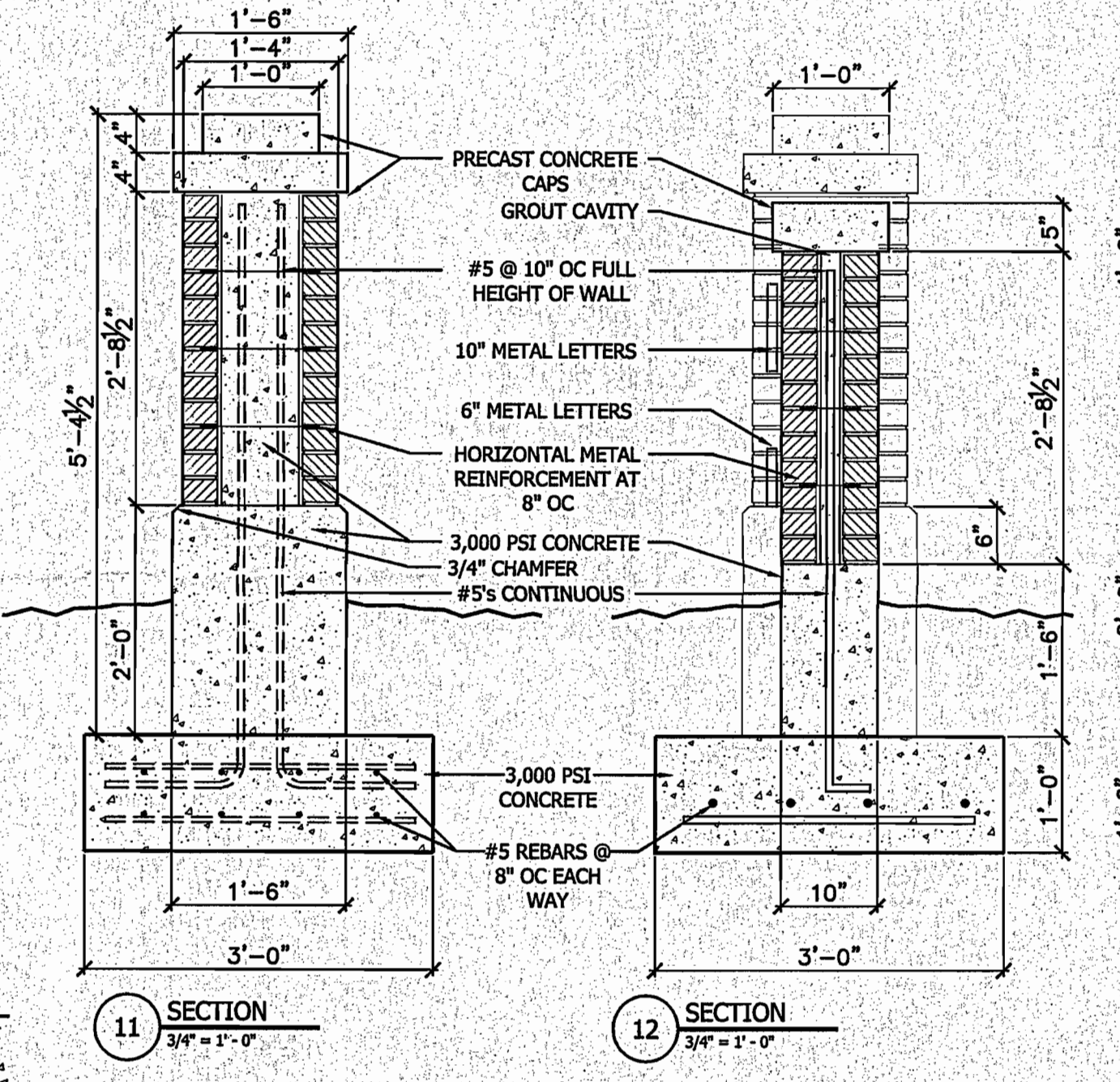
9 SECTION
Scale: 3/4" = 1'-0"



13 SECTION
Scale: 3/4" = 1'-0"

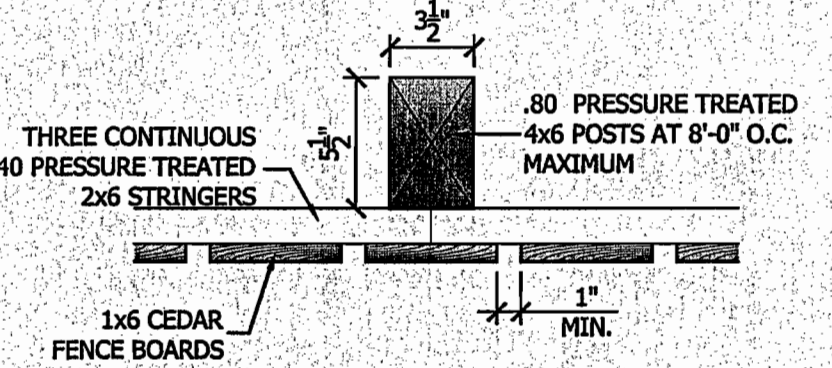


10 SECTION
Scale: 3/4" = 1'-0"



11 SECTION
Scale: 3/4" = 1'-0"

12 SECTION
Scale: 3/4" = 1'-0"



14 TYPICAL FENCE SECTION
Scale: 1-1/2" = 1'-0"

**JOSEPH B. LANCASTER
ELEMENTARY SCHOOL
2009**

ST. TAMMANY PARISH SCHOOL BOARD
GAYLE SLOAN - SUPERINTENDENT

BOARD MEMBERS
JOHN C. LAMARQUE - PRESIDENT

NEAL M. HENNEGAN
ELIZABETH B. HEINTZ
MICHAEL J. DIRMANN
STEPHEN J. "JACK" LOUP
CHARLES T. HARRELL
DONALD J. VILLERE
SOROLA "JODY" PALMER
DANIEL G. ZECHENELLY

MICHAEL J. GAMBRELL
RONALD "RON" BETTINCOURT
ROBERT R. "BOB" WOMACK
JAMES "RONNIE" PANKS, SR.
JOHN C. LAMARQUE
RAY A. ALFRED
MARY K. BELLISARIO

GASAWAY | GASAWAY | BANKSTON
ARCHITECTS - PLANNERS
HAMMOND, LOUISIANA

CONTRACTOR'S NAME
GENERAL CONTRACTOR
LOCATION

15 BUILDING PLAQUE
Scale: 3" = 1'-0"

- NOTES:
1. LETTERS ARE GARAMOND BOLD.
2. BACKGROUND TEXTURE IS LEATHERETTE.
3. BACKGROUND COLOR IS DARK OXIDE STAIN.
4. FINAL APPROVAL OF PLAQUE WILL NOT BE PROVIDED UNTIL AFTER CONSTRUCTION SUBSTANTIAL COMPLETION.

JOSEPH B. LANCASTER ELEMENTARY SCHOOL

ST. TAMMANY PARISH SCHOOL BOARD

President John C. Lamarque
Vice-President Stephen "Jack" Loup
Neal M. Hennegan District 1
Elizabeth B. Heintz District 2
Michael Dirmann District 3
Stephen J. "Jack" Loup District 4
Charles T. Harrell District 5

Donald J. Villere District 6
Sorola "Jody" Palmer District 7
Daniel G. Zechenelly District 8
Michael J. Gambrell District 9
Ronald "Ron" Bettincourt District 10

Robert R. "Bob" Womack District 11
James "Ronnie" Panks, Sr. District 12
John C. Lamarque District 13
Ray A. Alfred District 14
Mary K. Bellisario District 15

SUPERINTENDENT: GAYLE SLOAN
Deputy Superintendent: W. L. "Trey" Folse, III
Assistant Superintendent: Cheryl Arable
Assistant Superintendent: Peter J. Jabbia

Architects + Planners

SUCCESSFUL BIDDERS INFORMATION

SUBCONTRACTORS INFORMATION

16 JOB SIGN
Scale: 3/4" = 1'-0"

JOSEPH B. LANCASTER ELEMENTARY SCHOOL

ST. TAMMANY PARISH SCHOOL BOARD

President John C. Lamarque
Vice-President Stephen "Jack" Loup
Neal M. Hennegan District 1
Elizabeth B. Heintz District 2
Michael Dirmann District 3
Stephen J. "Jack" Loup District 4
Charles T. Harrell District 5

Donald J. Villere District 6
Sorola "Jody" Palmer District 7
Daniel G. Zechenelly District 8
Michael J. Gambrell District 9
Ronald "Ron" Bettincourt District 10

Robert R. "Bob" Womack District 11
James "Ronnie" Panks, Sr. District 12
John C. Lamarque District 13
Ray A. Alfred District 14
Mary K. Bellisario District 15

SUPERINTENDENT: GAYLE SLOAN
Deputy Superintendent: W. L. "Trey" Folse, III
Assistant Superintendent: Cheryl Arable
Assistant Superintendent: Peter J. Jabbia

Architects + Planners

SUCCESSFUL BIDDERS INFORMATION

GENERAL NOTES:
1. ELECTRONIC FILES OF CONCEPTUAL RENDERING AND THEIR RESPECTIVE LOGOS WILL BE PROVIDED BY OWNER/ARCHITECT.
2. VERIFY TEXT WITH ARCHITECT PRIOR TO FABRICATION.

17 JOB SIGN
Scale: 3/4" = 1'-0"

ANDREW GASAWAY, JR., ARCHITECT, AIA, APA
BRET GASAWAY, ARCHITECT, AIA, NCARB
CHRIS BANKSTON, ARCHITECT, AIA, NCARB, LEED AP

GGB
Gasaway | Gasaway | Bankston
Architects + Planners

1001 W. THOMAS ST., SUITE G
HAMMOND, LA 70401
985.345.5047
FAX 985.345.5000

JOSEPH B. LANCASTER
ELEMENTARY SCHOOL
ST. TAMMANY PARISH SCHOOL BOARD
MADISONVILLE, LOUISIANA

SFPSB PROJECT #0825

THIS DRAWING IS AN INSTRUMENT OF SERVICE, IS AND SHALL REMAIN THE PROPERTY OF THE ARCHITECT AND SHALL NOT BE REPRODUCED, PUBLISHED OR USED IN ANY WAY WITHOUT THE EXPRESS PERMISSION OF THE ARCHITECT.

PROJ. NO. 0825
DATE 06.25.09
REVISED Ad #1 - 07.08.09

PROFESSIONAL OF RECORD ARCHITECTS & PLANNERS

CRISTOPHER P. BELLISARIO
REGISTERED ARCHITECT
NO. 10567

A006R1