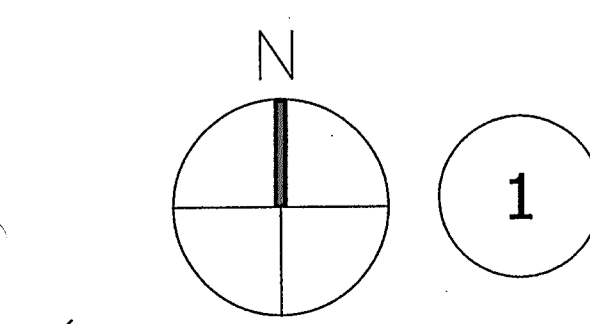
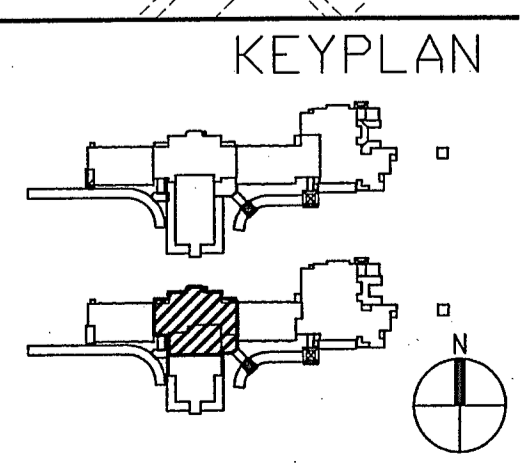


GENERAL NOTES (THIS SHEET):
 1. REFER TO M100 FOR ALL GENERAL MECHANICAL NOTES AND MECHANICAL PLAN KEYNOTES.
 2. REFER TO P301 FOR ALL EQUIPMENT LOCATED ON ROOF.



1 PARTIAL 1st FLOOR PLAN - MECHANICAL
 Scale: 1/8"=1'-0"



ANDREW GASAWAY, JR., ARCHITECT, AIA, AIA
 BRIE GASAWAY, ARCHITECT, AIA, NCARB
 CHRIS BANKSTON, ARCHITECT, AIA, NCARB, LEED AP

GGB
 Gasaway | Gasaway | Bankston
 Architects + Planners
 1007 W. THOMAS ST., SUITE G
 HAMMOND, LA 70401
 983.345.5047
 FAX 983.345.5040

**JOSEPH B. LANCASTER
 ELEMENTARY SCHOOL
 ST. TAMMANY PARISH SCHOOL BOARD
 MADISONVILLE, LOUISIANA**

STPSB PROJECT #0825

THIS DRAWING IS AN INSTRUMENT OF SERVICE, IS AND SHALL REMAIN THE PROPERTY OF THE ARCHITECT AND SHALL NOT BE REPRODUCED, PUBLISHED OR USED IN ANY WAY WITHOUT THE EXPRESS PERMISSION OF THE ARCHITECT.

PROJ. NO.	0825
DATE	06.25.09
REVISIONS	

© GASAWAY ■ BANKSTON - ARCHITECTS & PLANNERS
 PROFESSIONAL OF RECORD

REVIEWED BY: ANDREW EYRE, JR., PROFESSIONAL ENGINEER IN MECHANICAL ENGINEERING

M101