

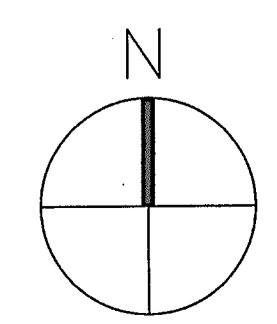
TEMPERATURE CONTROLS CONTRACTOR TO PROVIDE EMS CONTROL PANEL, 120 VOLT DEDICATED CIRCUIT, & WEB SERVER.

RE: ENLARGED PLAN SHEET 301, DETAIL 3

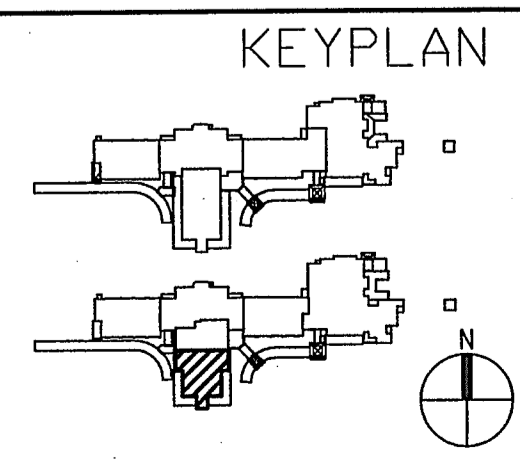
RE: ENLARGED PLAN SHEET 301, DETAIL 4

TEMPERATURE CONTROLS CONTRACTOR TO PROVIDE 3 PHASE POWER MONITOR WITH 20 AMP BREAKER. COORDINATE WITH ELECTRICAL CONTRACTOR ON EXACT INSTALLATION.

GENERAL NOTES (THIS SHEET):
 1. REFER TO M100 FOR ALL GENERAL MECHANICAL NOTES AND MECHANICAL PLAN KEYNOTES.
 2. REFER TO P301 FOR ALL EQUIPMENT LOCATED ON ROOF.



1 PARTIAL 1st FLOOR PLAN - MECHANICAL
 Scale: 1/8"=1'-0"



ANDREW GASAWAY, JR., ARCHITECT, AIA, APA
 BRETT GASAWAY, ARCHITECT, AIA, NCARB
 CHRIS BANKSTON, ARCHITECT, AIA, NCARB, LEED AP



JOSEPH B. LANCASTER
ELEMENTARY SCHOOL BOARD
 ST. TAMMANY PARISH SCHOOL BOARD
 STPSB PROJECT #0825
 MADISONVILLE, LOUISIANA

THIS DRAWING IS AN INSTRUMENT OF SERVICE AND SHALL REMAIN THE PROPERTY OF THE ARCHITECT AND SHALL NOT BE REPRODUCED, PUBLISHED OR USED IN ANY WAY WITHOUT THE EXPRESS PERMISSION OF THE ARCHITECT.

PROJ. NO.	0825
DATE	06.25.09

© GASAWAY | BANKSTON - ARCHITECTS & PLANNERS
 PROFESSIONAL OF RECORD
 SHEET NO. **M104**