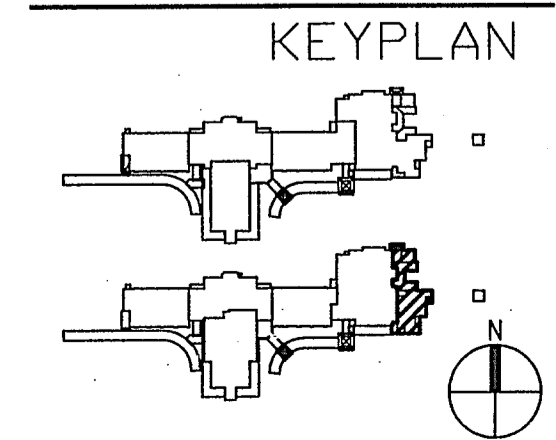
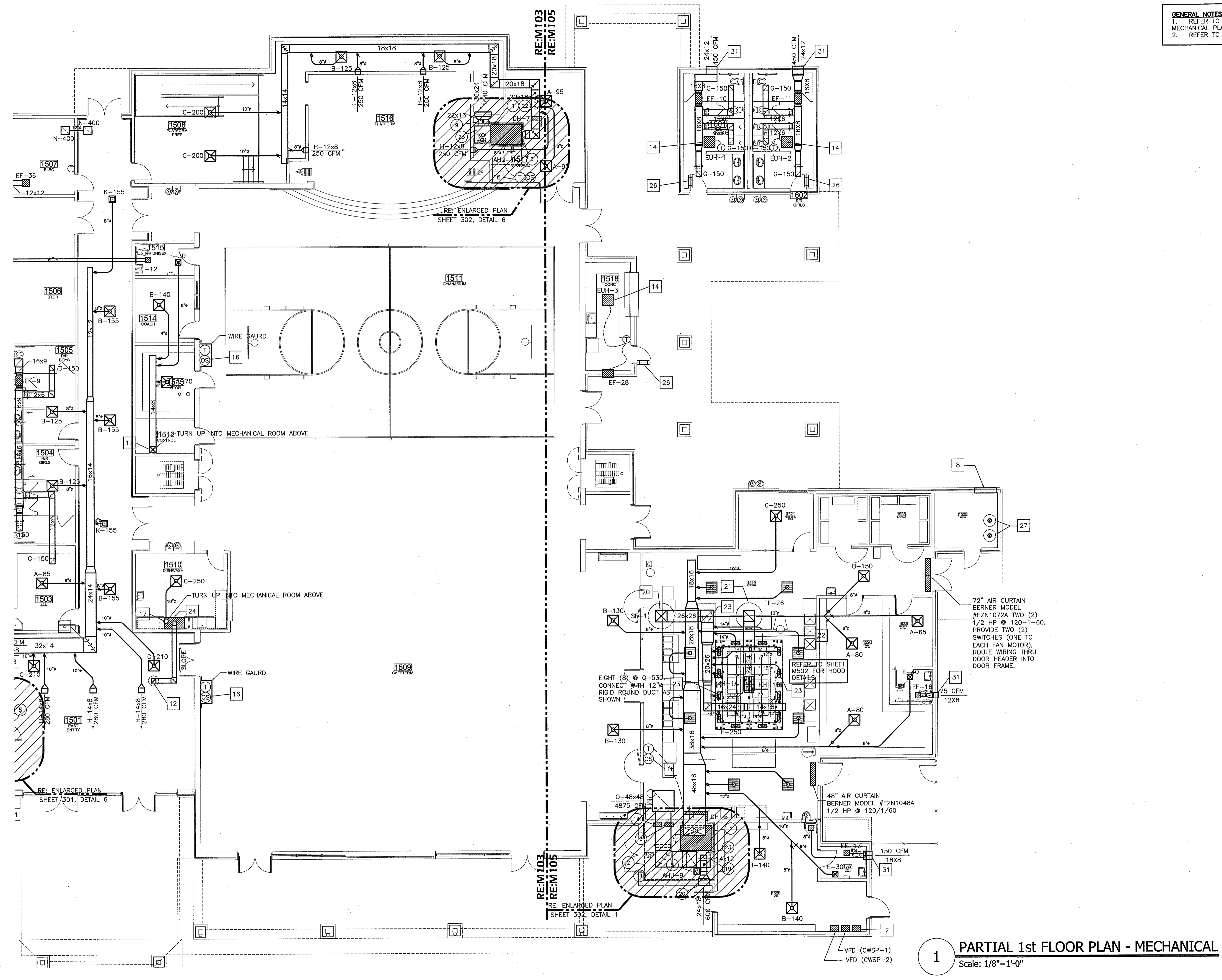


GENERAL NOTES (THIS SHEET):
 1. REFER TO M100 FOR ALL GENERAL MECHANICAL NOTES AND MECHANICAL PLAN KEYNOTES.
 2. REFER TO P301 FOR ALL EQUIPMENT LOCATED ON ROOF.



1 PARTIAL 1st FLOOR PLAN - MECHANICAL
 Scale: 1/8"=1'-0"

JOSEPH B. LANCASTER
ELEMENTARY SCHOOL
 ST. TAMMANY PARISH SCHOOL BOARD
 MADISONVILLE, LOUISIANA
 STPSB PROJECT #0825

GGB
 Gasaway | Bankston
 Architects + Planners
 1007 W. THOMAS ST., SUITE G
 HAMMOND, LA 70401
 985.345.5047
 FAX 985.345.5000

© GASAWAY | BANKSTON - ARCHITECTS & PLANNERS
 PROFESSIONAL OF RECORD
 SHEET NO. M105
 PROJECT NO. 0825
 DATE 06.25.09

THIS DRAWING IS AN INSTRUMENT OF SERVICE, IS AND SHALL REMAIN THE PROPERTY OF THE ARCHITECT AND SHALL NOT BE REPRODUCED, PUBLISHED OR USED IN ANY WAY WITHOUT THE EXPRESS PERMISSION OF THE ARCHITECT.

STATE OF LOUISIANA
 JUNE 25 2009
 PROFESSIONAL ENGINEER
 CIVIL ENGINEERING