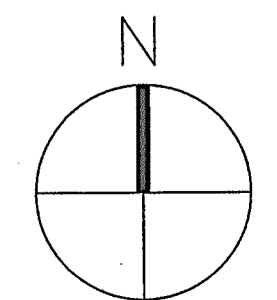
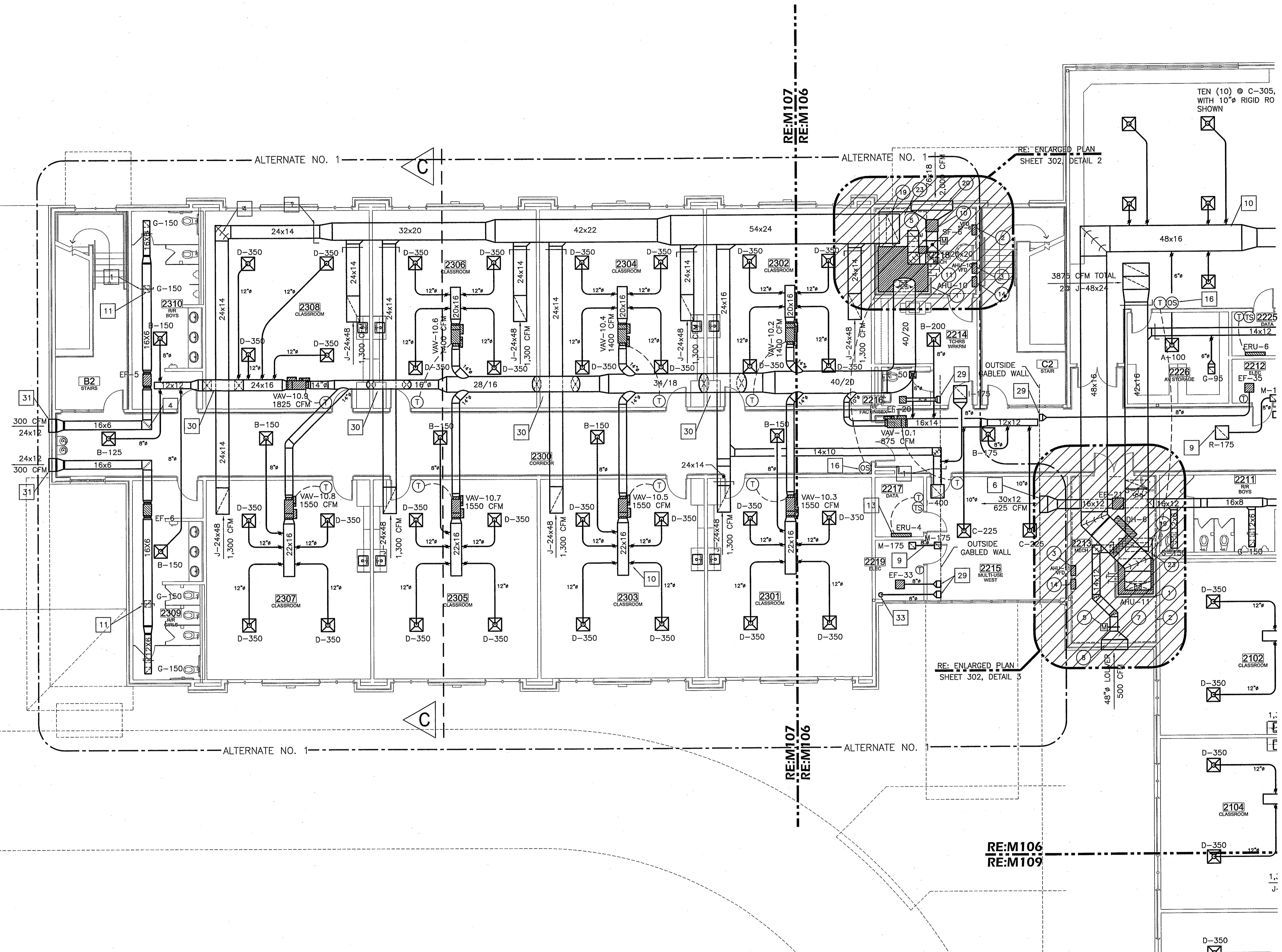


**GENERAL NOTES (THIS SHEET):**  
 1. REFER TO M100 FOR ALL GENERAL MECHANICAL NOTES AND MECHANICAL PLAN KEYNOTES.  
 2. REFER TO P301 FOR ALL EQUIPMENT LOCATED ON ROOF.



1

**PARTIAL 2nd FLOOR PLAN - MECHANICAL**  
 Scale: 1/8"=1'-0"

ANDREW GASAWAY, JR., ARCHITECT AIA, APA  
 BRET GASAWAY, ARCHITECT, AIA, NCARB  
 CHRIS BANKSTON, ARCHITECT, AIA, NCARB, LEED AP

**GGB**  
 Gasaway | Gasaway | Bankston  
 Architects + Planners  
 1007 W. THOMAS ST., SUITE G  
 HAMMOND, LA 70401  
 985.345.5047  
 985.345.5040

**JOSEPH B. LANCASTER  
 ELEMENTARY SCHOOL**  
 ST. TAMMANY PARISH SCHOOL BOARD  
 MADISONVILLE, LOUISIANA  
 STPSB PROJECT #0825

THIS DRAWING IS AN INSTRUMENT OF SERVICE, IS AND SHALL REMAIN THE PROPERTY OF THE ARCHITECT AND SHALL NOT BE REPRODUCED, PUBLISHED OR USED IN ANY WAY WITHOUT THE EXPRESS PERMISSION OF THE ARCHITECT.

PROJ. NO.	0825
DATE	06.25.09

© GASAWAY ■ BANKSTON - ARCHITECTS & PLANNERS  
 PROFESSIONAL OF RECORD

SHEET NO. **M107**