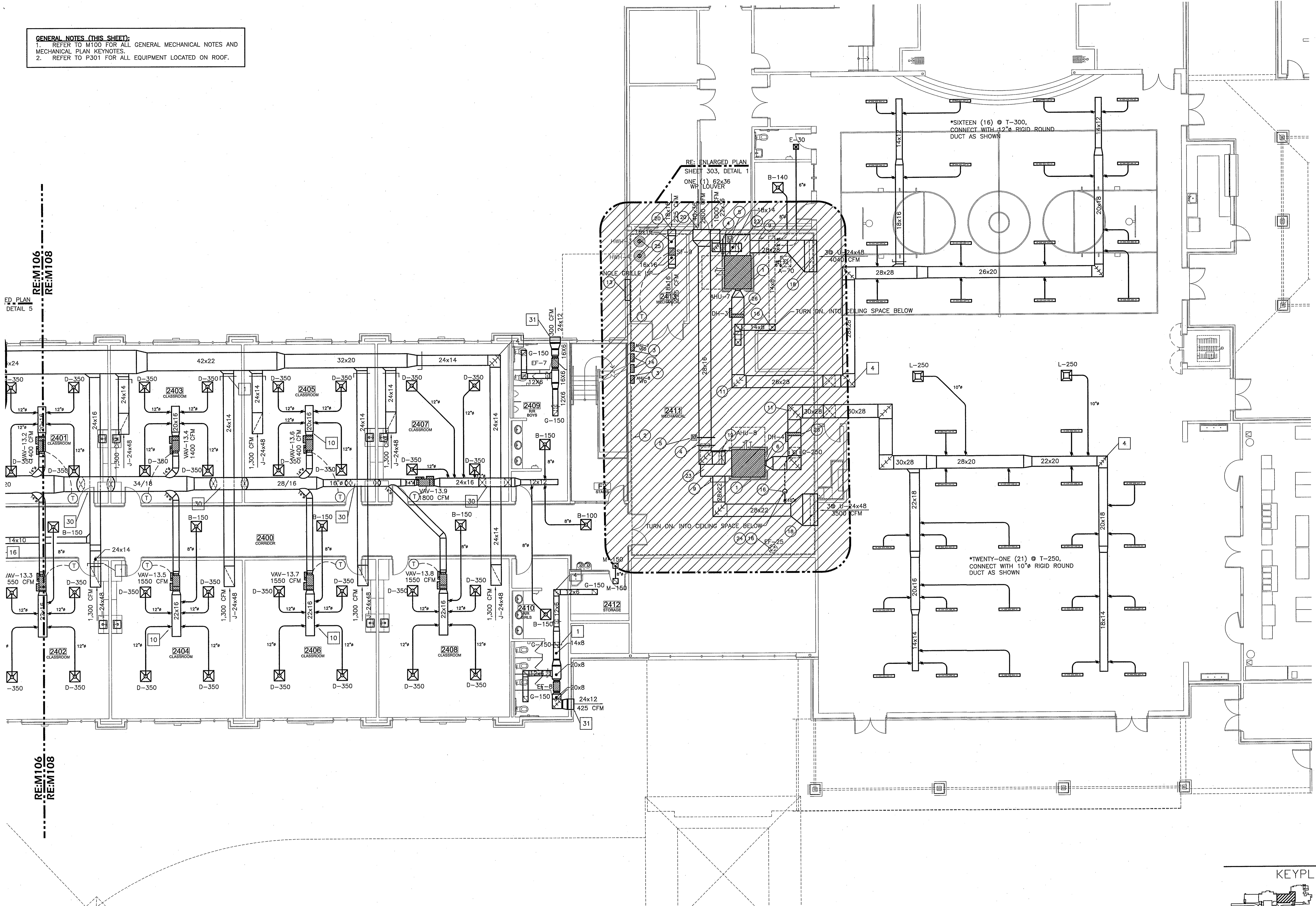
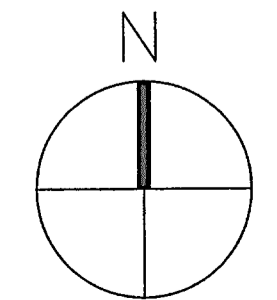


GENERAL NOTES (THIS SHEET):
 1. REFER TO M100 FOR ALL GENERAL MECHANICAL NOTES AND MECHANICAL PLAN KEYNOTES.
 2. REFER TO P301 FOR ALL EQUIPMENT LOCATED ON ROOF.

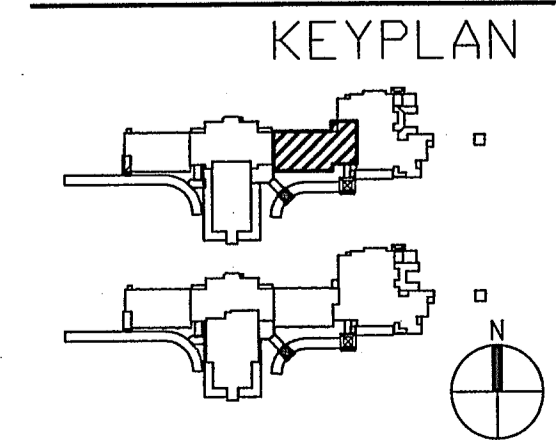


ED. PLAN
 DETAIL 5
 RE:M106
 RE:M108

RE:M106
 RE:M108



1 PARTIAL 2nd FLOOR PLAN - MECHANICAL
 Scale: 1/8"=1'-0"



ANDREW GASAWAY, JR., ARCHITECT AIA, APA
 BRET GASAWAY, ARCHITECT, AIA, NCARB
 CHRIS BANKSTON, ARCHITECT, AIA, NCARB, LEED AP

GGB
 Gasaway | Gasaway | Bankston
 Architects + Planners
 1007 W. THOMAS ST., SUITE G
 HAMMOND, LA 70401
 985.345.5047
 985.345.5060

**JOSEPH B. LANCASTER
 ELEMENTARY SCHOOL**
 ST. TAMMANY PARISH SCHOOL BOARD
 MADISONVILLE, LOUISIANA
 STPSB PROJECT #0825

THIS DRAWING IS AN INSTRUMENT OF SERVICE, IS AND SHALL REMAIN THE PROPERTY OF THE ARCHITECT AND SHALL NOT BE REPRODUCED, PUBLISHED OR USED IN ANY WAY WITHOUT THE EXPRESS PERMISSION OF THE ARCHITECT.

PROJ. NO. **0825**
 DATE **06.25.09**

© GASAWAY | GASAWAY | BANKSTON - ARCHITECTS & PLANNERS
 PROFESSIONAL OF RECORD
 STATE OF LOUISIANA
 ANDREW GASAWAY, JR.
 No. 100602
 Mechanical Engineer
 M108