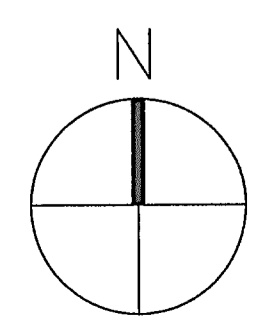


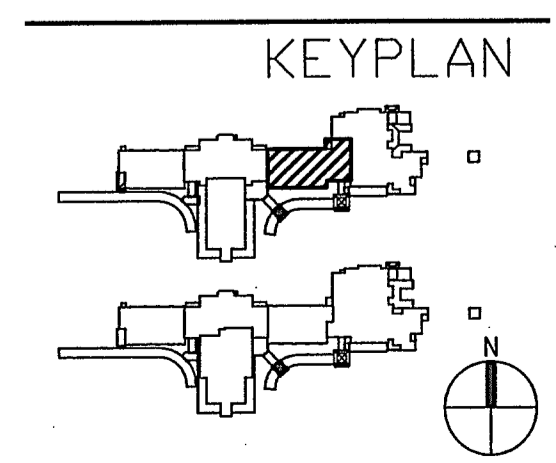
4" CWS/R LINES DOWN THRU FLOOR, SEAL W/ FIRE RATED CAULKING  
 SHUTOFF VALVE (TYP.)  
 BALANCING VALVE (TYP.)

RE:M203  
 RE:M204

RE:M203  
 RE:M204



1 PARTIAL 2nd FLOOR PLAN - MECHANICAL PIPING  
 Scale: 3/32"=1'-0"



© GASAWAY ■ BANKSTON ■ ARCHITECTS & PLANNERS  
 SHEET NO. PROFESSIONAL OF RECORD REVISED DATE PROJ. NO.

0825  
 06.25.09

ANDREW GASAWAY, JR., ARCHITECT, AIA, AIA  
 BRET GASAWAY, ARCHITECT, AIA, NCARB  
 CHRIS BANKSTON, ARCHITECT, AIA, NCARB, LEED AP

**GGB**  
 Gasaway | Gasaway | Bankston  
 Architects + Planners  
 1007 W. THOMAS ST., SUITE G  
 HAMMOND, LA 70401  
 985.345.5047  
 985.345.5060

**JOSEPH B. LANCASTER  
 ELEMENTARY SCHOOL  
 ST. TAMMANY PARISH SCHOOL BOARD  
 MADISONVILLE, LOUISIANA**  
 STPSB PROJECT #0825

THIS DRAWING IS AN INSTRUMENT OF SERVICE, IS AND SHALL REMAIN THE PROPERTY OF THE ARCHITECT AND SHALL NOT BE REPRODUCED, PUBLISHED OR USED IN ANY WAY WITHOUT THE EXPRESS PERMISSION OF THE ARCHITECT.

KEY PLAN

STATE OF LOUISIANA  
 HENRY W. EYRE, JR.  
 No. 18602  
 PROFESSIONAL ENGINEER  
 IN MECHANICAL ENGINEERING

**M204**