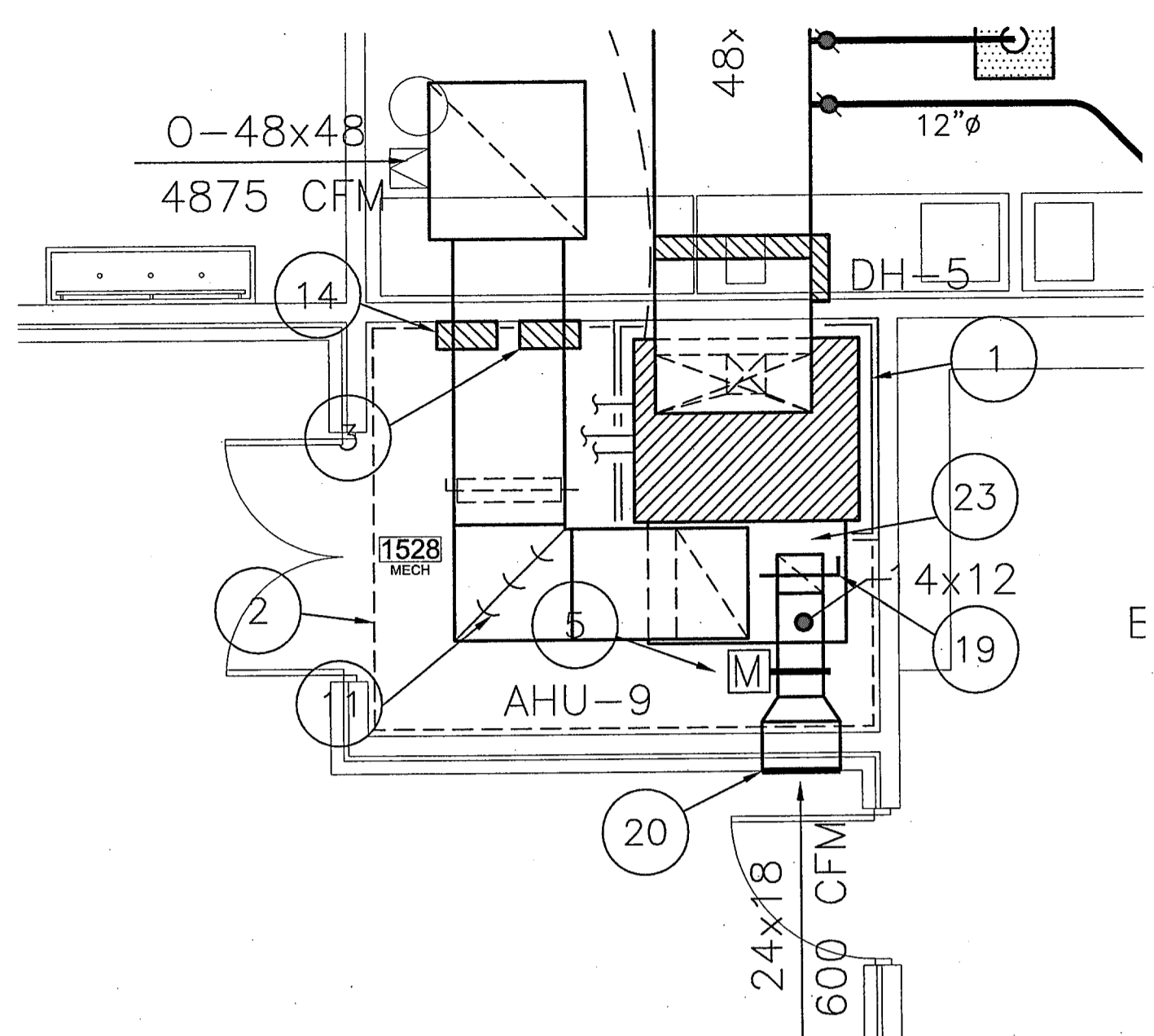


THIS DRAWING IS AN INSTRUMENT OF SERVICE, IS AND SHALL REMAIN THE PROPERTY OF THE ARCHITECT AND SHALL NOT BE REPRODUCED, PUBLISHED OR USED IN ANY WAY WITHOUT THE EXPRESS PERMISSION OF THE ARCHITECT.

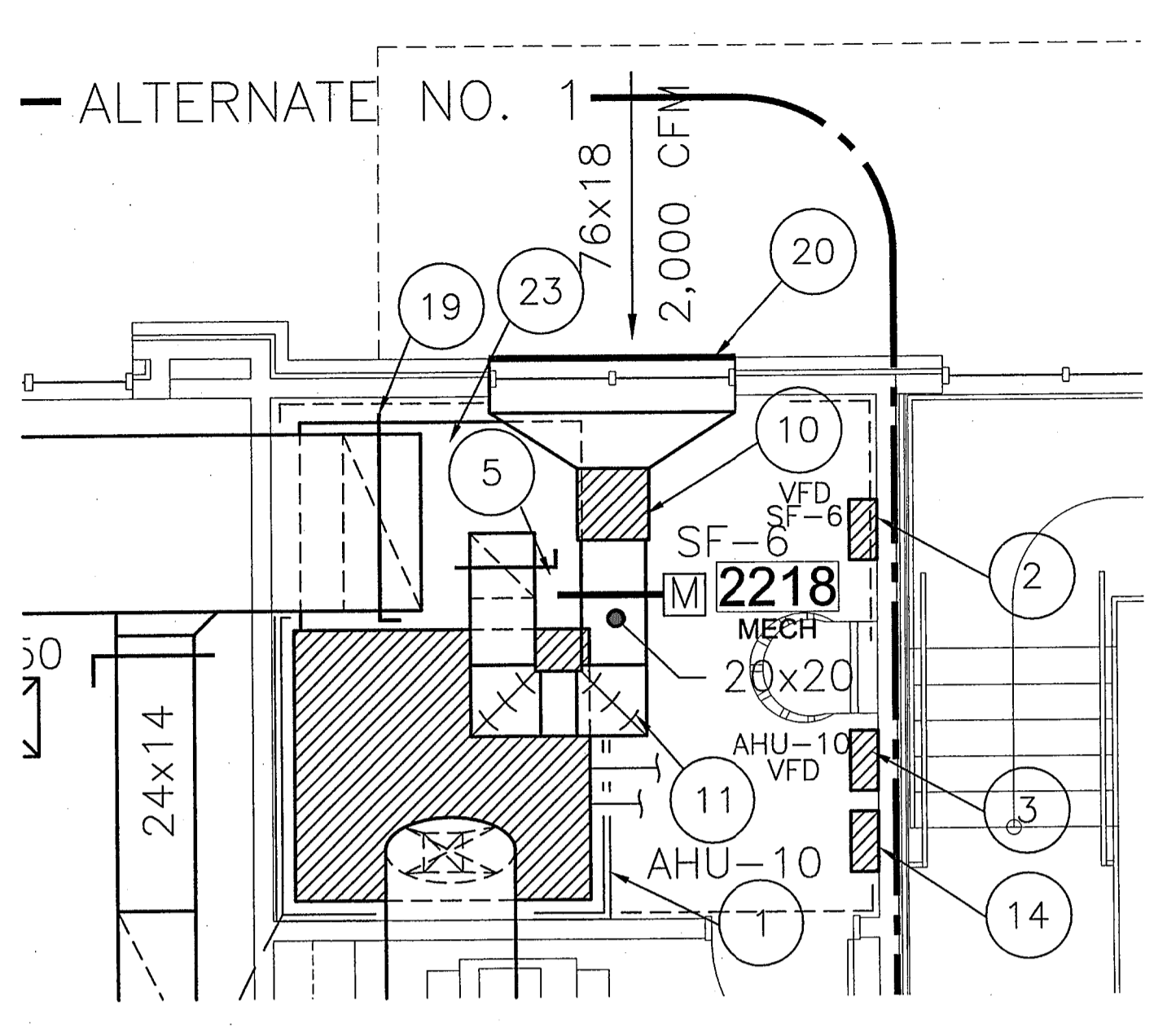
PROJ. NO. 0825  
 DATE 06.25.09

© GASAWAY | GASAWAY | BANKSTON - ARCHITECTS & PLANNERS  
 SHEET NO. M302  
 DATE OF ISSUE: 06/25/09  
 DRAWN BY: EYRE, JR.  
 PROJECT NO. 0825  
 PROFESSIONAL ENGINEER IN MECHANICAL ENGINEERING

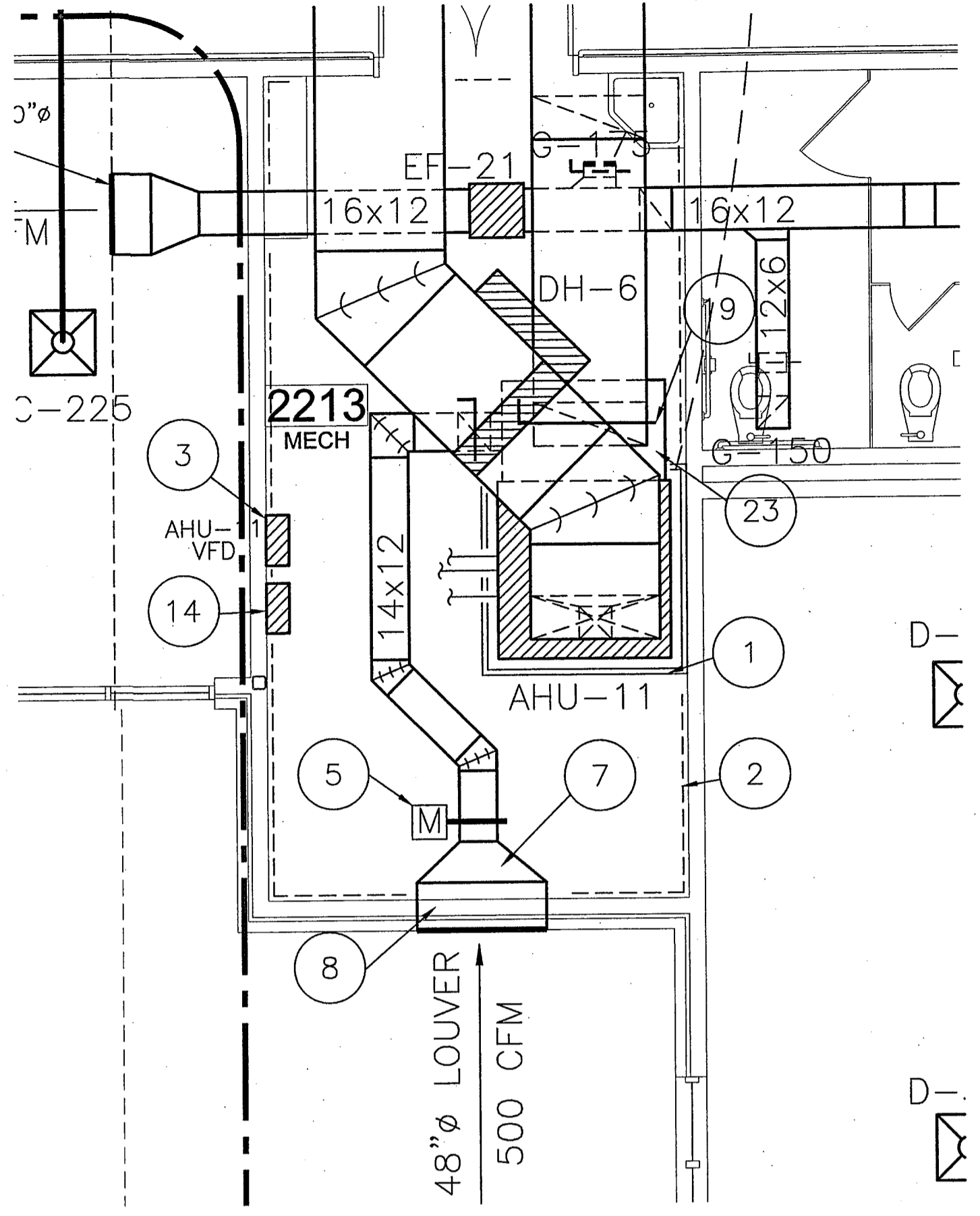
**M302**



**1 ENLARGED MECHANICAL ROOM 1528**  
 Scale: 1/4"=1'-0"



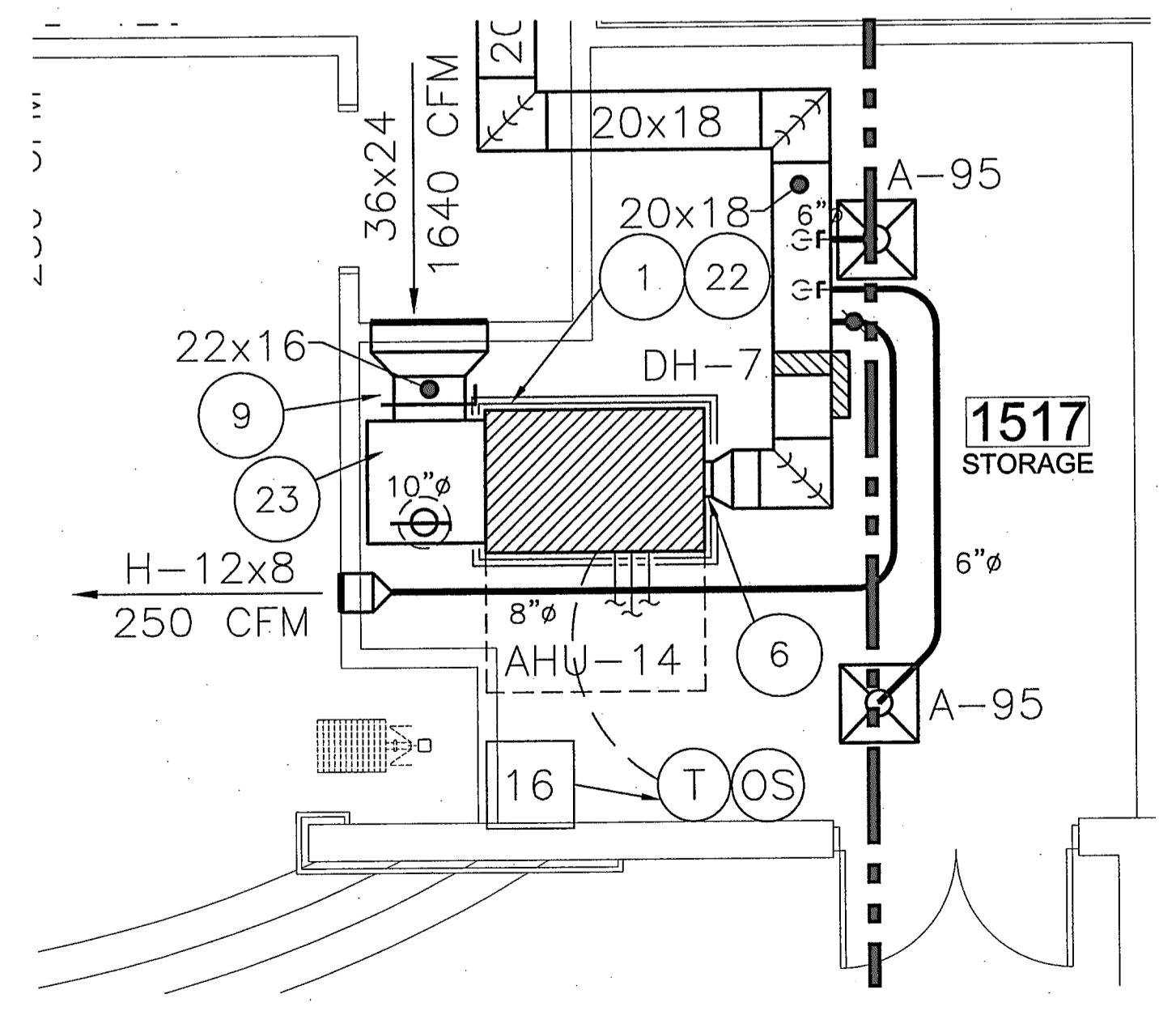
**2 ENLARGED MECHANICAL ROOM 2218**  
 Scale: 1/4"=1'-0"



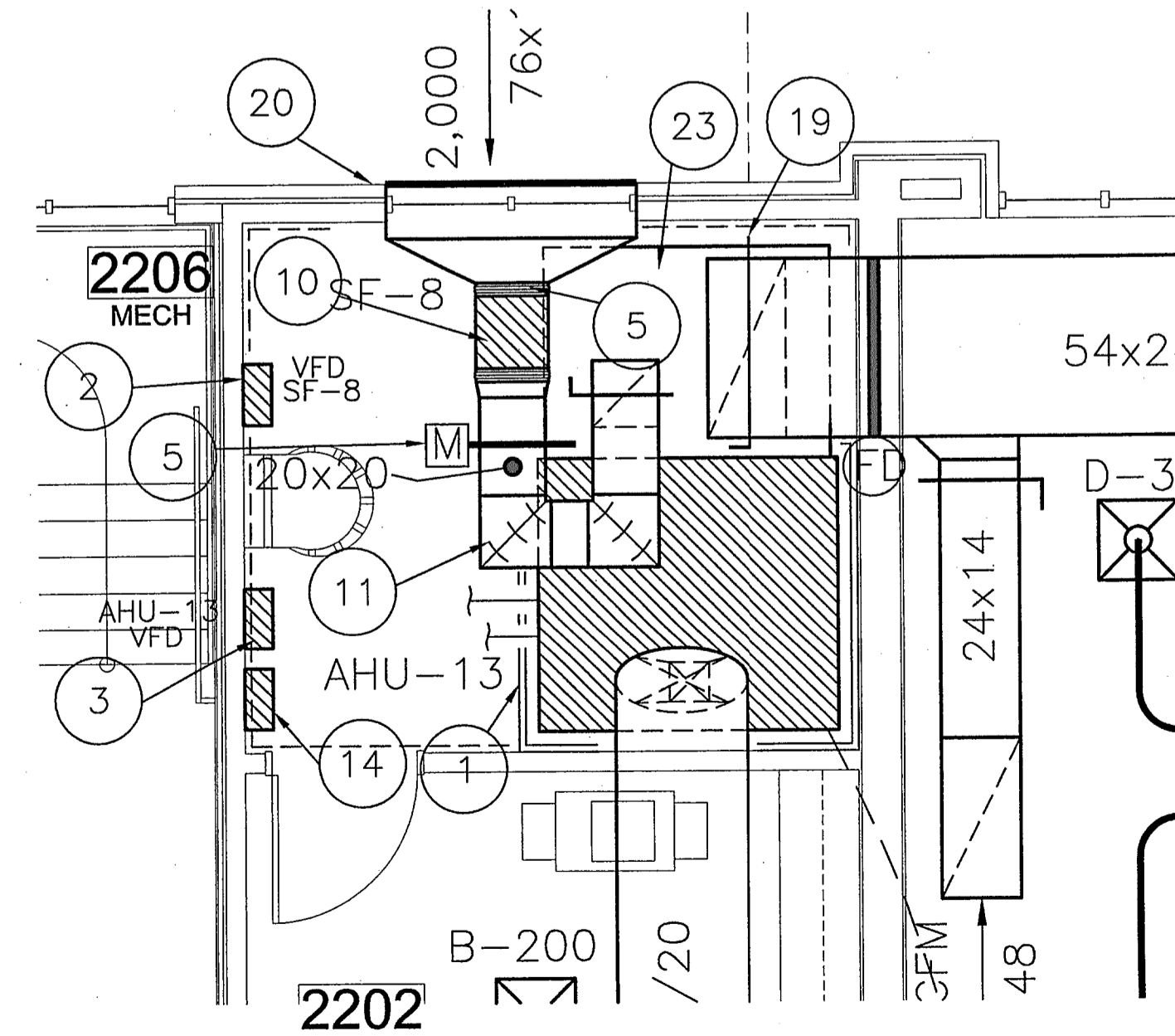
**3 ENLARGED MECHANICAL ROOM 2213**  
 Scale: 1/4"=1'-0"

**MECHANICAL PLAN KEYNOTES:**

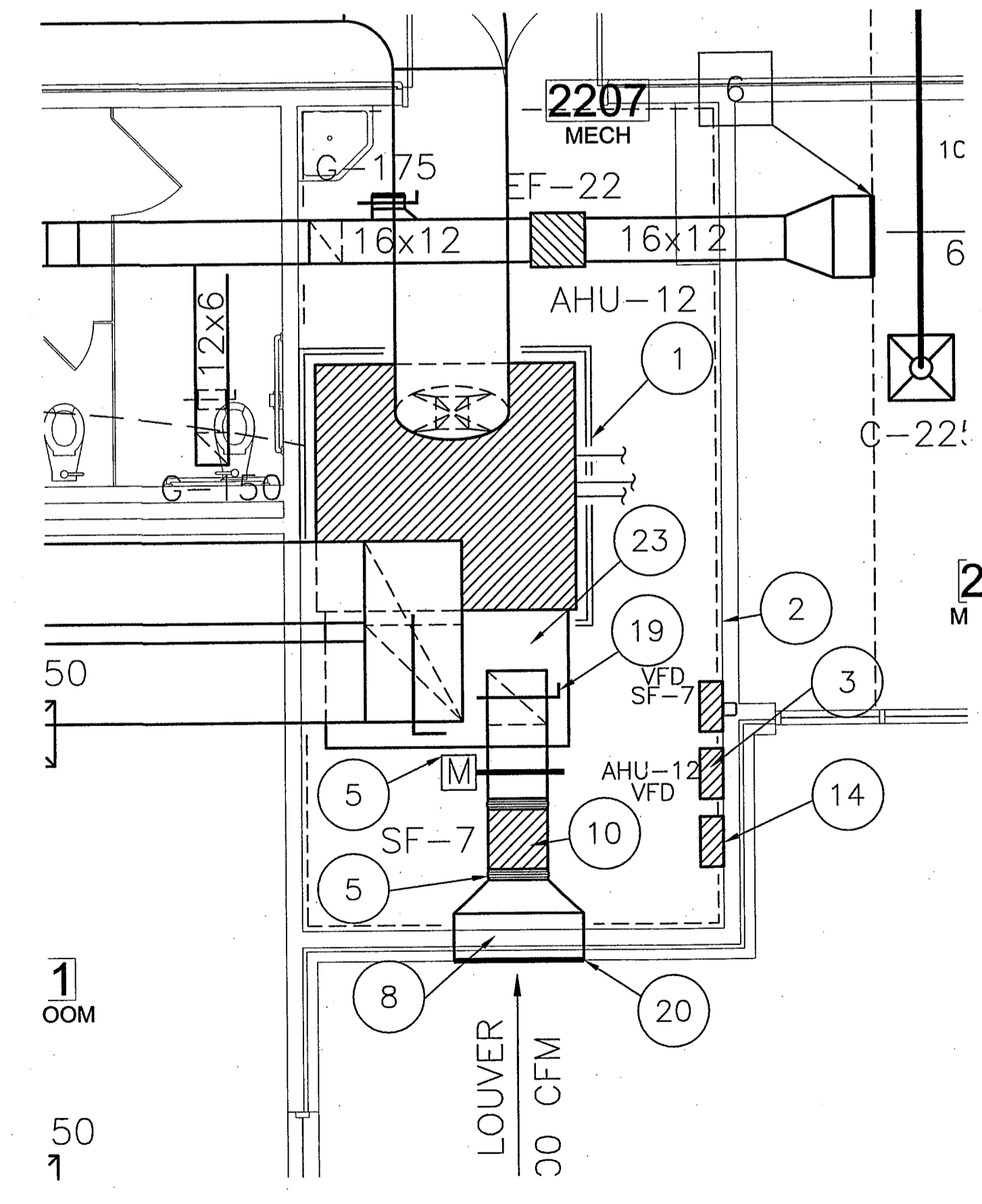
- ① 4" HIGH AUXILIARY STAINLESS STEEL DRAIN PAN (PIPE 1-1/4" COPPER DRAIN LINE TO FLOOR DRAIN), ON 4" HIGH CONCRETE HOUSEKEEPING PAD, MINIMUM 6" CLEARANCE ALL AROUND.
- ② 2" THICK FIBERGLASS SOUND BOARD WITH PERFORATED GLASS FABRIC FACING, LOCATE FACING EXPOSED TOWARD ROOM.
- ③ VARIABLE SPEED DRIVE, TYPICAL.
- ④ BACKDRAFT DAMPER, TYPICAL.
- ⑤ MOTORIZED DAMPER, TYPICAL.
- ⑥ FLEXIBLE CONNECTION, TYPICAL.
- ⑦ 14X12 O/S AIR DUCT, TRANSITION TO 24X18 OPENING AND CONNECT TO PLENUM BOX CONNECTED TO 48" ROUND LOUVER.
- ⑧ 48" ROUND LOUVER, WEATHERPROOF W/ BIRDSCREEN, TO BE FACTORY PAINTED, COLOR SELECTION BY ARCHITECT. CONTRACTOR TO PROVIDE 12" DEEP 50X50 PLENUM BOX AND CONNECT TO LOUVER OPENING, SEAL AIR TIGHT.
- ⑨ MANUAL VOLUME DAMPER, ADJUSTABLE AND LOCKABLE, TYPICAL.
- ⑩ INLINE OUTSIDE AIR FAN, REFER TO TYPICAL DETAIL.
- ⑪ TURNING VANES, TYPICAL ALL TURNS 30-DEGREES AND GREATER.
- ⑫ RETURN AIR PLENUM, FULL SIZE OF UNIT OPENING, LENGTH AS REQUIRED, INTERANLLY INSULATED.
- ⑬ COMBUSTION AIR ASSEMBLY. MECH. CONTRACTOR PROVIDE TWO (2) 48"x30" EXTERIOR WALL LOUVERS, TOP OF ONE LOUVER TO BE WITHIN 12" FROM FINISHED CEILING AND THE BOTTOM OF THE OTHER LOUVER TO BE WITHIN 12" OF FINISHED FLOOR, LOUVER TO BE OPEN TO HOT WATER HEATER ROOM. GENERAL CONTRACTOR TO FRAME AND BRACE OPENING AS REQUIRED FOR LOUVERS.
- ⑭ EMS CONTROL PANEL, PROVIDE 120 VOLT DEDICATED CIRCUIT.
- ⑮ TYPICAL ELECTRIC UNIT HEATER. ELECTRIC UNIT TO BE CONTROLLED BY THERMOSTAT LOCATED ON WALL. REFER TO TYPICAL DETAIL, SCHEDULES, AND SPECIFICATIONS.
- ⑯ FIRE DAMPER (2 HR. RATED) AT FLOOR PENETRATION.
- ⑰ REFRIGERANT LINES TURN UP INTO CEILING SPACE, ROUTE TO OUTSIDE WALL. CHILLED WATER LINES REFER TO PIPING PLANS, SHEET M201.
- ⑱ 4" THK SOUND ATTENUATOR, AIRSAN OR EQUAL.
- ⑲ MANUAL VOLUME DAMPER, LOCKABLE AND ADJUSTABLE, LOCATE IN DUCT DROP.
- ⑳ WEATHERPROOF LOUVER EQUIPPED WITH BIRDSCREEN, PROVIDE DUCT EXTENSION THRU WALL AND TRANSITION TO DUCT AS REQUIRED. SEAL ALL AROUND WATER TIGHT, LOUVER TO BE PAINTED, COLOR SELECTION BY ARCH.
- ㉑ 8x8 OUTSIDE AIR INTAKE UP THRU ROOF TO FILTER ROOF MOUNT INTAKE HOOD WITH PREFABRICATED ROOF CURB.
- ㉒ AIR HANDLING UNIT, SUPPORT FROM STRUCTURE, PROVIDE 42" WORKING CLEARANCE IN FRONT OF CONTROL SIDE OF UNIT FOR SERVICING.
- ㉓ RETURN AIR PLENUM, INTERNALLY INSULATED, CONNECT TO UNIT WITH FLEXIBLE CONNECTION, FULL SIZE OF UNIT OPENING, LENGTH AS REQUIRED. ALL JOINTS AND SEAMS TO BE SEALED AIR TIGHT.
- ㉔ 10x10 EXHAUST DUCT UP THRU ROOF TO ROOF MOUNT EXHAUST FAN EF-25 WITH PREFABRICATED ROOF CURB, RE: TYPICAL DETAIL.
- ㉕ TWO (2) 8" STAINLESS STEEL (DOUBLE WALL) EXHAUST FLUE UP THRU ROOF EQUIPPED WITH WEATHERPROOF CAP.
- ㉖ ELECTRIC DUCT HEATER, MAINTAIN REQUIRED CLEARANCES FROM UNIT AND ELBOWS AS PER MANUFACUTER'S RECOMMENDATIONS.



**6 ENLARGED PLATFORM STORAGE ROOM 1517**  
 Scale: 1/4"=1'-0"



**5 ENLARGED MECHANICAL ROOM 2206**  
 Scale: 1/4"=1'-0"



**4 ENLARGED MECHANICAL ROOM 2207**  
 Scale: 1/4"=1'-0"