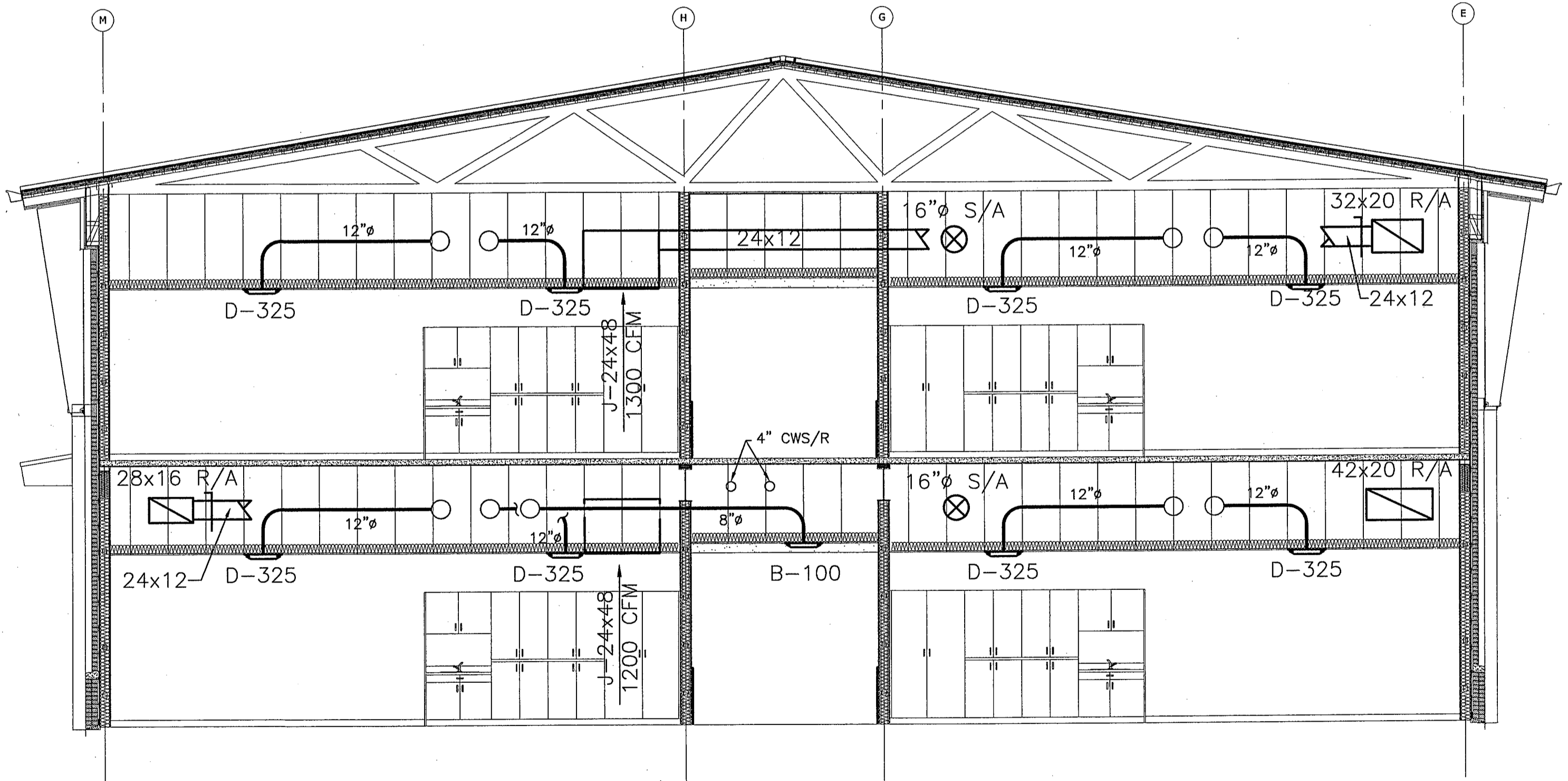


1 MECHANICAL SECTION B-B
Scale: 3/16"=1'-0"



2 MECHANICAL SECTION C-C
Scale: 3/16"=1'-0"

ANDREW GASAWAY, JR., ARCHITECT, AIA, APA
BRET GASAWAY, ARCHITECT, AIA, NCARB
CHRIS BANKSTON, ARCHITECT, AIA, NCARB, LEED AP

GGB
Gasaway | Gasaway | Bankston
Architects + Planners
1007 W. THOMAS ST., SUITE 6
HAMMOND, LA 70401
985.345.5047
985.345.5040

**JOSEPH B. LANCASTER
ELEMENTARY SCHOOL
ST. TAMMANY PARISH SCHOOL BOARD**
MADISONVILLE, LOUISIANA
STPSB PROJECT #0825

THIS DRAWING IS AN INSTRUMENT OF SERVICE AND SHALL REMAIN THE PROPERTY OF THE ARCHITECT AND SHALL NOT BE REPRODUCED, PUBLISHED OR USED IN ANY WAY WITHOUT THE EXPRESS PERMISSION OF THE ARCHITECT.

PROJ. NO. 0825
DATE 06.25.09

© GASAWAY | BANKSTON - ARCHITECTS & PLANNERS
PROFESSIONAL OF RECORD
HENRY EYRE, JR.
REGISTERED PROFESSIONAL ENGINEER
STATE OF LOUISIANA
NO. 108802
MECHANICAL ENGINEERING

SHEET NO. M304