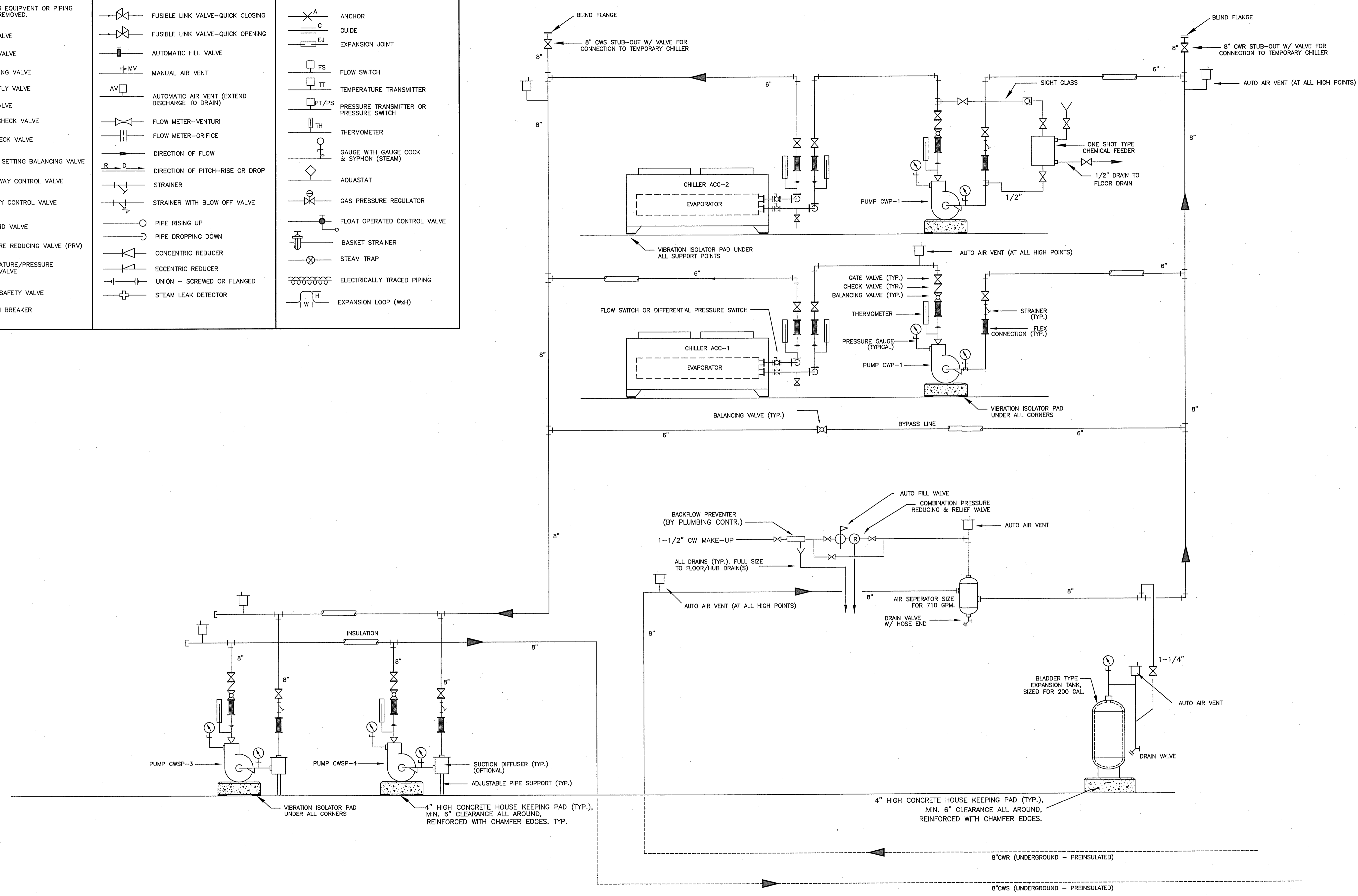


PIPING ELEMENTS/VALVING (APPLICABLE ALL SHEETS)

NOTE: ALL SYMBOLS IN THIS LEGEND ARE NOT NECESSARILY FOUND ON THE PLANS

<p>EXISTING EQUIPMENT OR PIPING TO BE REMOVED.</p> <p>GATE VALVE</p> <p>GLOBE VALVE</p> <p>BALANCING VALVE</p> <p>BUTTERFLY VALVE</p> <p>BALL VALVE</p> <p>SWING CHECK VALVE</p> <p>LIFT CHECK VALVE</p> <p>CBV</p> <p>THREE WAY CONTROL VALVE</p> <p>TWO WAY CONTROL VALVE</p> <p>SOLENOID VALVE</p> <p>PRESSURE REDUCING VALVE (PRV)</p> <p>TEMPERATURE/PRESSURE RELIEF VALVE</p> <p>RELIEF/SAFETY VALVE</p> <p>VACUUM BREAKER</p>	<p>FUSIBLE LINK VALVE—QUICK CLOSING</p> <p>FUSIBLE LINK VALVE—QUICK OPENING</p> <p>AUTOMATIC FILL VALVE</p> <p>MANUAL AIR VENT</p> <p>AV</p> <p>AUTOMATIC AIR VENT (EXTEND DISCHARGE TO DRAIN)</p> <p>FLOW METER—VENTURI</p> <p>FLOW METER—ORIFICE</p> <p>DIRECTION OF FLOW</p> <p>DIRECTION OF PITCH—RISE OR DROP</p> <p>STRAINER</p> <p>STRAINER WITH BLOW OFF VALVE</p> <p>PIPE RISING UP</p> <p>PIPE DROPPING DOWN</p> <p>CONCENTRIC REDUCER</p> <p>ECCENTRIC REDUCER</p> <p>UNION — SCREWED OR FLANGED</p> <p>STEAM LEAK DETECTOR</p>	<p>ANCHOR</p> <p>GUIDE</p> <p>EXPANSION JOINT</p> <p>FS</p> <p>FLOW SWITCH</p> <p>TT</p> <p>TEMPERATURE TRANSMITTER</p> <p>PT/PS</p> <p>PRESSURE TRANSMITTER OR PRESSURE SWITCH</p> <p>TH</p> <p>THERMOMETER</p> <p>Gauge with GAUGE COCK & SYPHON (STEAM)</p> <p>AQUASTAT</p> <p>GAS PRESSURE REGULATOR</p> <p>FLOAT OPERATED CONTROL VALVE</p> <p>BASKET STRAINER</p> <p>STEAM TRAP</p> <p>ELECTRICALLY TRACED PIPING</p> <p>EXPANSION LOOP (WxH)</p>
--	--	---



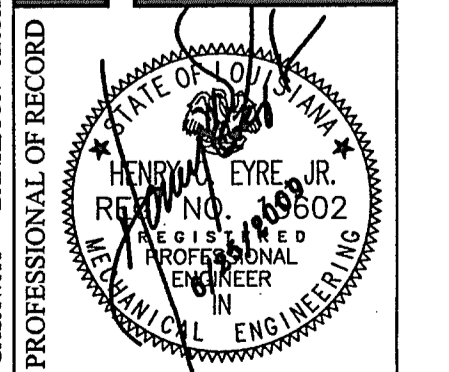
ANDREW GASAWAY, JR., ARCHITECT, AIA, APA
 BRET GASAWAY, ARCHITECT, AIA, NCARB
 CHRIS BANKSTON, ARCHITECT, AIA, NCARB, LEED AP

GGB
 Gasaway | Bankston
 Architects + Planners
 1007 W. THOMAS ST., SUITE G
 HAWKINSVILLE, LA 70401
 985.345.5047
 985.345.5040

JOSEPH B. LANCASTER
ELEMENTARY SCHOOL
 ST. TAMMANY PARISH SCHOOL BOARD
 MADISONVILLE, LOUISIANA
 STPSB PROJECT #0825

THIS DRAWING IS AN INSTRUMENT OF SERVICE, IS AND SHALL REMAIN THE PROPERTY OF THE ARCHITECT AND SHALL NOT BE REPRODUCED, PUBLISHED OR USED IN ANY WAY WITHOUT THE EXPRESS PERMISSION OF THE ARCHITECT.

PROJ. NO.	0825
DATE	06.25.09
REVISED	
RECORD	



M501