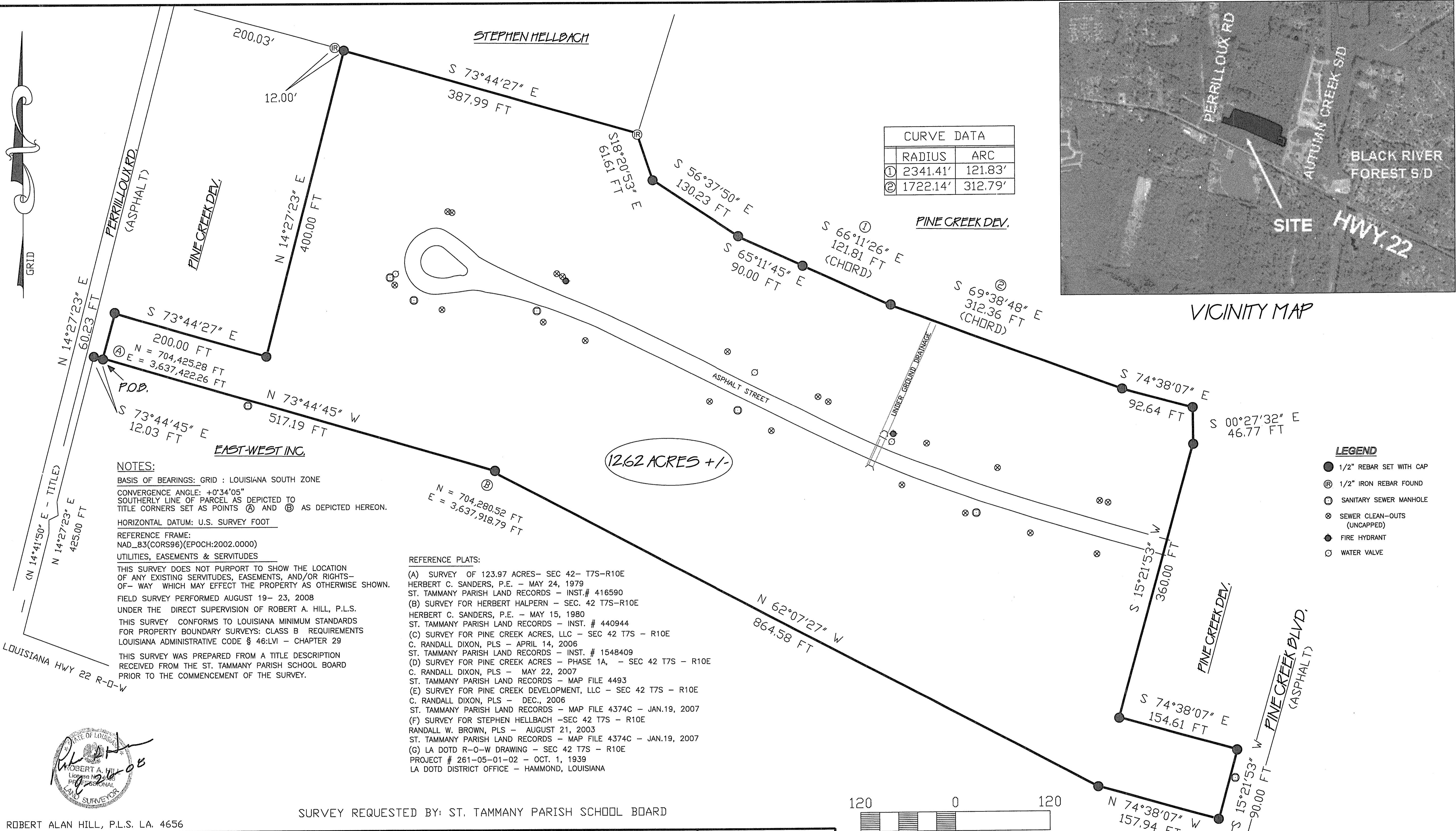


VICINITY MAP

CURVE DATA	
RADIUS	ARC
① 2341.41'	121.83'
② 1722.14'	312.79'



NOTES:

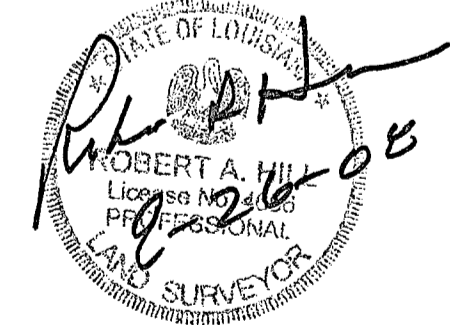
BASIS OF BEARINGS: GRID : LOUISIANA SOUTH ZONE
 CONVERGENCE ANGLE: +0°34'05"
 SOUTHERLY LINE OF PARCEL AS DEPICTED TO
 TITLE CORNERS SET AS POINTS ① AND ② AS DEPICTED HEREON.
 HORIZONTAL DATUM: U.S. SURVEY FOOT
 REFERENCE FRAME:
 NAD_83(CORS96)(EPOCH:2002.0000)
 UTILITIES, EASEMENTS & SERVITUDES
 THIS SURVEY DOES NOT PURPORT TO SHOW THE LOCATION
 OF ANY EXISTING SERVITUDES, EASEMENTS, AND/OR RIGHTS-
 OF-WAY WHICH MAY EFFECT THE PROPERTY AS OTHERWISE SHOWN.
 FIELD SURVEY PERFORMED AUGUST 19- 23, 2008
 UNDER THE DIRECT SUPERVISION OF ROBERT A. HILL, P.L.S.
 THIS SURVEY CONFORMS TO LOUISIANA MINIMUM STANDARDS
 FOR PROPERTY BOUNDARY SURVEYS: CLASS B REQUIREMENTS
 LOUISIANA ADMINISTRATIVE CODE § 46:LVII - CHAPTER 29
 THIS SURVEY WAS PREPARED FROM A TITLE DESCRIPTION
 RECEIVED FROM THE ST. TAMMANY PARISH SCHOOL BOARD
 PRIOR TO THE COMMENCEMENT OF THE SURVEY.

REFERENCE PLATS:

- (A) SURVEY OF 123.97 ACRES- SEC 42- T7S-R10E
 HERBERT C. SANDERS, P.E. - MAY 24, 1979
 ST. TAMMANY PARISH LAND RECORDS - INST.# 416590
- (B) SURVEY FOR HERBERT HALPERN - SEC. 42 T7S-R10E
 HERBERT C. SANDERS, P.E. - MAY 15, 1980
 ST. TAMMANY PARISH LAND RECORDS - INST. # 440944
- (C) SURVEY FOR PINE CREEK ACRES, LLC - SEC 42 T7S - R10E
 C. RANDALL DIXON, PLS - APRIL 14, 2006
 ST. TAMMANY PARISH LAND RECORDS - INST. # 1548409
- (D) SURVEY FOR PINE CREEK ACRES - PHASE 1A, - SEC 42 T7S - R10E
 C. RANDALL DIXON, PLS - MAY 22, 2007
 ST. TAMMANY PARISH LAND RECORDS - MAP FILE 4493
- (E) SURVEY FOR PINE CREEK DEVELOPMENT, LLC - SEC 42 T7S - R10E
 C. RANDALL DIXON, PLS - DEC., 2006
 ST. TAMMANY PARISH LAND RECORDS - MAP FILE 4374C - JAN.19, 2007
- (F) SURVEY FOR STEPHEN HELLBACH -SEC 42 T7S - R10E
 RANDALL W. BROWN, PLS - AUGUST 21, 2003
 ST. TAMMANY PARISH LAND RECORDS - MAP FILE 4374C - JAN.19, 2007
- (G) LA DOTD R-0-W DRAWING - SEC 42 T7S - R10E
 PROJECT # 261-05-01-02 - OCT. 1, 1939
 LA DOTD DISTRICT OFFICE - HAMMOND, LOUISIANA

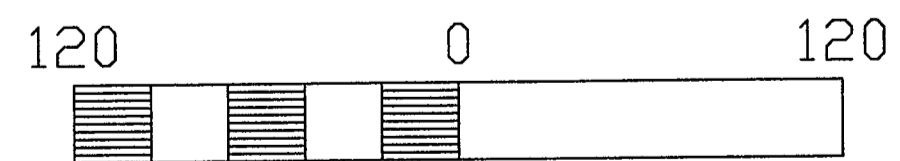
LEGEND

- 1/2" REBAR SET WITH CAP
- Ⓡ 1/2" IRON REBAR FOUND
- Ⓢ SANITARY SEWER MANHOLE
- ⊗ SEWER CLEAN-OUTS (UNCAPPED)
- FIRE HYDRANT
- WATER VALVE



ROBERT ALAN HILL, P.L.S. LA. 4656

SURVEY REQUESTED BY: ST. TAMMANY PARISH SCHOOL BOARD



ARPENTEUR
CONSULTANTS, LLC
 SURVEYORS & MAPPERS
 201 EAST GIBSON STREET
 COVINGTON, LA 70433
 985-892-2005

A PORTION OF GROUND IN
 SECTION 42 - TOWNSHIP 7S - RANGE 10E
 ST. HELENA MERIDIAN
 ST. TAMMANY PARISH, LOUISIANA

DATE: AUGUST 26, 2008
 DWG#: 08241.STPSB_BND
 DRAWN BY: RAH
 SCALE: 1" = 60'

REVISED: 5/30/2009