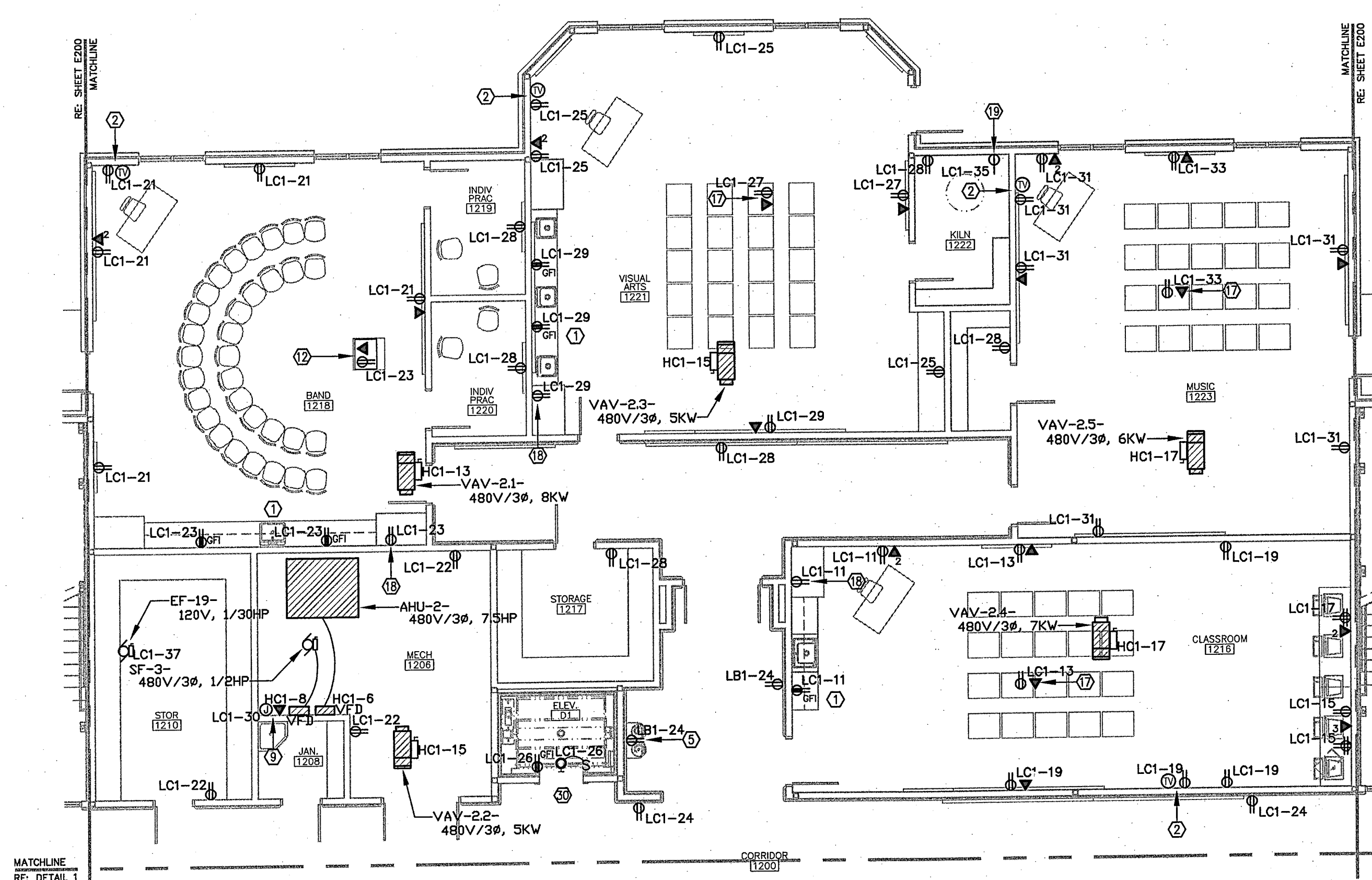
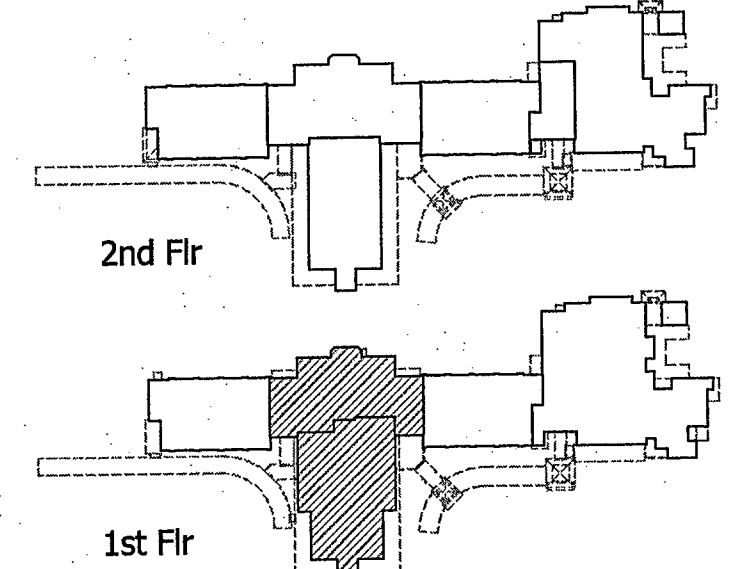


NORTH
1 POWER PLAN-
 FIRST FLOOR WING 1100
 SCALE: 1/8" = 1'-0"



NORTH
2 POWER PLAN-
 FIRST FLOOR WING 1200
 SCALE: 1/8" = 1'-0"

- POWER PLAN NOTES**
1. VERIFY THE EXACT LOCATION, VOLTAGE, PHASE, AMPERAGE, HORSEPOWER, ETC. OF ALL MECHANICAL EQUIPMENT WITH THE MECHANICAL CONTRACTOR.
 2. VERIFY THE EXACT LOCATION OF ALL DEVICES WITH THE ARCHITECT PRIOR TO ROUGH-IN.
 3. THE COUNTERTOP SHALL BE DRILLED AND GROMMETS INSTALLED BY OTHERS WHERE DEVICES ARE SHOWN TO BE INSTALLED BELOW THE COUNTER.
 4. VERIFY THE EXACT LOCATION OF ALL FAN CONTROL SWITCHES WITH THE MECHANICAL CONTRACTOR PRIOR TO ROUGH-IN.
 5. MAINTAIN PROPER CLEARANCE WHEN INSTALLING PANELS & DRY-TYPE TRANSFORMERS.
 6. INSTALL TWO (2) 2" CONDUIT SLEEVES FROM ABOVE CORRIDOR CEILING INTO CEILING SPACE ABOVE EACH ADJACENT ROOM FOR FUTURE USE.
 7. REFER TO SHEET E100 FOR POWER PLAN KEYNOTES.
 8. TURN OUT CONDUIT SERVING THE 3-PORT & 2-PORT DATA OUTLETS TO ABOVE THE CEILING IN THE CORRIDOR, TYPICAL ALL CLASSROOMS.
 9. CONNECT AHU MOTORIZED DAMPERS TO RECEPTACLE LOCATED IN MECH. ROOM.
 10. CORRIDOR WALLS TO HAVE GLAZED BLOCK UP 48" AFF, ALL DEVICES SHOWN IN CORRIDOR SHALL BE FLUSH MOUNT WITH FACE OF GLAZE BLOCK.
 11. ROUTE CONDUITS FOR ALL VOICE/DATA OUTLETS UNDERGROUND TO THE DATA CLOSET LOCATED IN THE AREA.
 12. CONNECT ALL SMOKE DAMPERS TO NEAREST RECEPTACLE CIRCUIT LOCATED IN THE MECH. ROOM.



AS Daniel Calongne
 7911 Winwood Blvd., Suite D
 Baton Rouge, Louisiana 70809
 voice (225)922-9223 fax (225)922-9414

ANDREW GASAWAY, JR., ARCHITECT, AIA, APA
 BRETT GASAWAY, ARCHITECT, AIA, NCARB
 CHRIS BANKSTON, ARCHITECT, AIA, NCARB, LEED AP

GGB
 Gasaway | Gasaway | Bankston
 Architects + Planners
 1037 W. THOMAS ST., SUITE G
 HAWAII, LA 70401
 985.345.5947
 FAX 985.345.5940

JOSEPH B. LANCASTER
 ELEMENTARY SCHOOL
 ST. TAMMANY PARISH SCHOOL BOARD
 MADISONVILLE, LOUISIANA
 STPSB PROJECT #0825

THIS DRAWING IS AN INSTRUMENT OF SERVICE. IT IS AND SHALL REMAIN THE PROPERTY OF THE ARCHITECT AND SHALL NOT BE REPRODUCED, PUBLISHED OR USED IN ANY WAY WITHOUT THE EXPRESS PERMISSION OF THE ARCHITECT.

PROJ. NO.	0825
DATE	06.25.09
REVISIONS	

PROFESSIONAL OF RECORD
 DANIEL T. CALONGNE
 REG. NO. 15220
 ARCHITECT
 STATE OF LOUISIANA

SHEET NO. **E201**