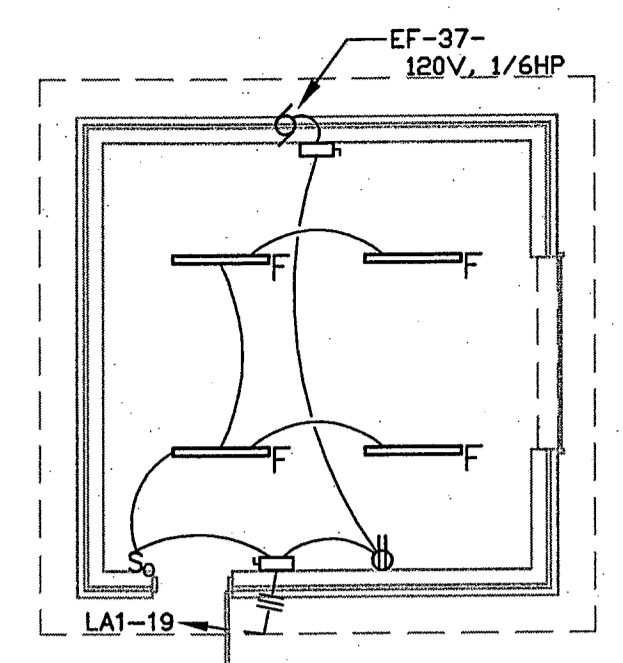
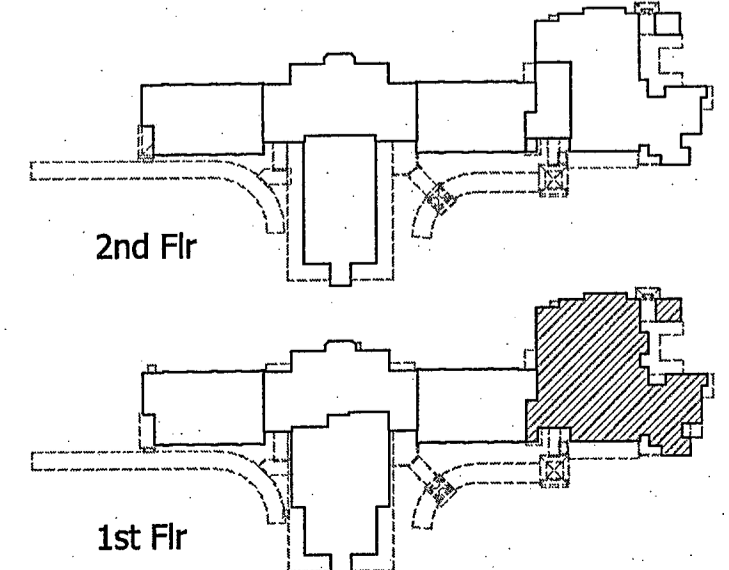


**ELECTRICAL PLAN-
STORAGE 1701**
SCALE: 1/8" = 1'-0"

- POWER PLAN NOTES**
1. VERIFY THE EXACT LOCATION, VOLTAGE, PHASE, AMPERAGE, HORSEPOWER, ETC. OF ALL MECHANICAL EQUIPMENT WITH THE MECHANICAL CONTRACTOR.
 2. VERIFY THE EXACT LOCATION OF ALL DEVICES WITH THE ARCHITECT PRIOR TO ROUGH-IN.
 3. THE COUNTERTOP SHALL BE DRILLED AND GROMMETS INSTALLED BY OTHERS WHERE DEVICES ARE SHOWN TO BE INSTALLED BELOW THE COUNTER.
 4. VERIFY THE EXACT LOCATION OF ALL FAN CONTROL SWITCHES WITH THE MECHANICAL CONTRACTOR PRIOR TO ROUGH-IN.
 5. MAINTAIN PROPER CLEARANCE WHEN INSTALLING PANELS & DRY-TYPE TRANSFORMERS.
 6. INSTALL TWO (2) 2" CONDUIT SLEEVES FROM ABOVE CORRIDOR CEILING INTO CEILING SPACE ABOVE EACH ADJACENT ROOM FOR FUTURE USE.
 7. REFER TO SHEET E101 FOR POWER PLAN KEYNOTES.
 8. TURN OUT CONDUIT SERVING THE 3-PORT & 2-PORT DATA OUTLETS TO ABOVE THE CEILING IN THE CORRIDOR, TYPICAL ALL CLASSROOMS.
 9. CONNECT AHU MOTORIZED DAMPERS TO RECEPTACLE LOCATED IN MECH. ROOM.
 10. CORRIDOR WALLS TO HAVE GLAZED BLOCK UP 48" AFF; ALL DEVICES SHOWN IN CORRIDOR SHALL BE FLUSH MOUNT WITH FACE OF GLAZE BLOCK.
 11. ROUTE CONDUITS FOR ALL VOICE/DATA OUTLETS UNDERGROUND TO THE DATA CLOSET LOCATED IN THE AREA.
 12. CONNECT ALL SMOKE DAMPERS TO NEAREST RECEPTACLE CIRCUIT LOCATED IN THE MECH. ROOM.



**POWER PLAN-
FIRST FLOOR WING 1500**
SCALE: 1/8" = 1'-0"



ASCCALONE
7811 Westwood Blvd., Suite D
Baton Rouge, Louisiana 70809
voice (225)923-9223 fax (225)923-9414

GGB
Gasaway | Gasaway | Bankston
Architects + Planners
1007 W. THOMAS ST., SUITE C
HAMMOND, LA 70401
985.345.5047
985.345.5040
FAX 985.345.5040

JOSEPH B. LANCASTER
ELEMENTARY SCHOOL
ST. TAMMANY PARISH SCHOOL BOARD
MADISONVILLE, LOUISIANA
STPSB PROJECT #0825

THIS DRAWING IS AN INSTRUMENT OF SERVICE, IS AND SHALL REMAIN THE PROPERTY OF THE ARCHITECT AND SHALL NOT BE REPRODUCED, PUBLISHED OR USED IN ANY WAY WITHOUT THE EXPRESS PERMISSION OF THE ARCHITECT.

PROJ. NO.	0825
DATE	06.25.09
REVISIONS	

Daniel T. Calongone
REGISTERED PROFESSIONAL ARCHITECT
STATE OF LOUISIANA
REG. NO. 15220

E202