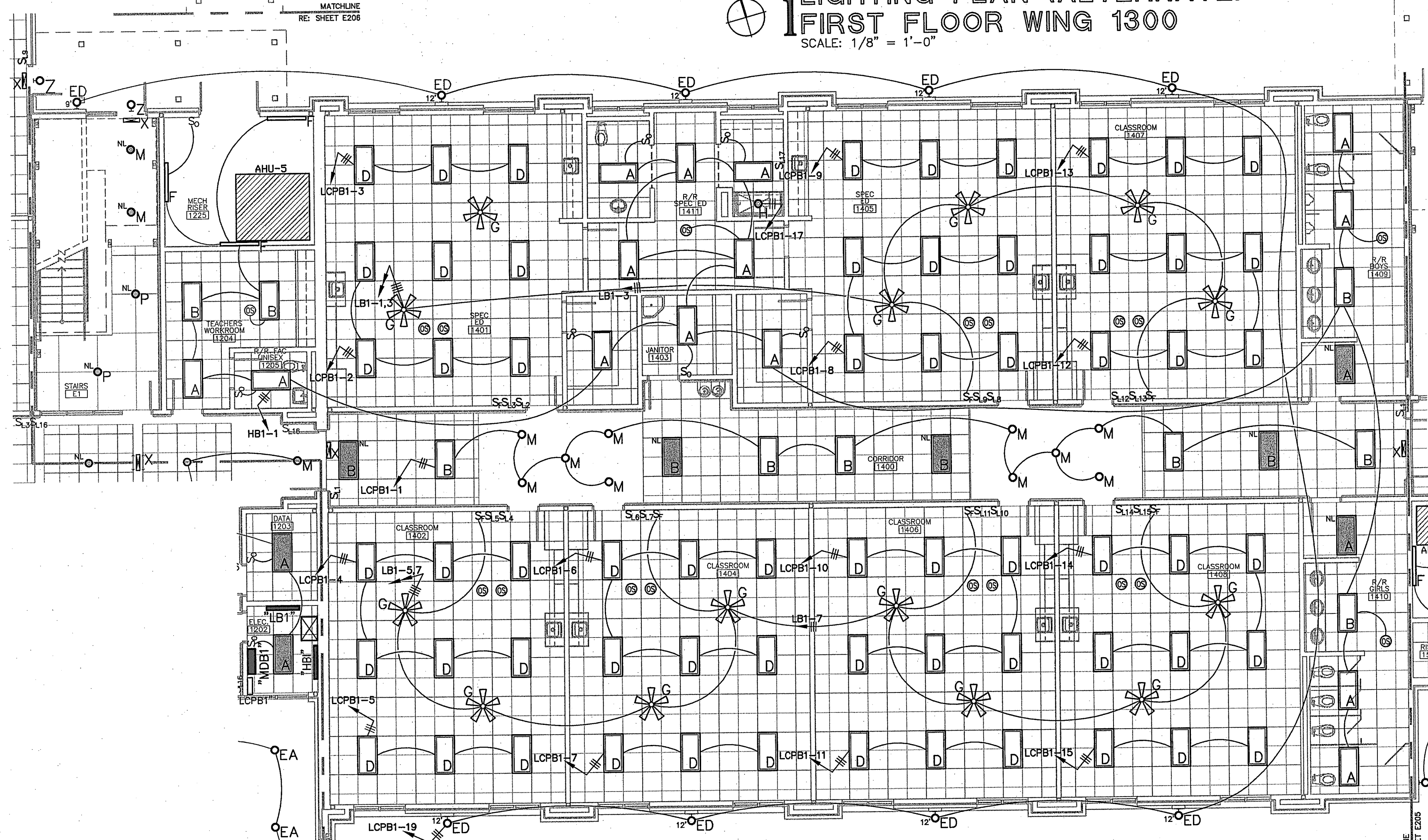
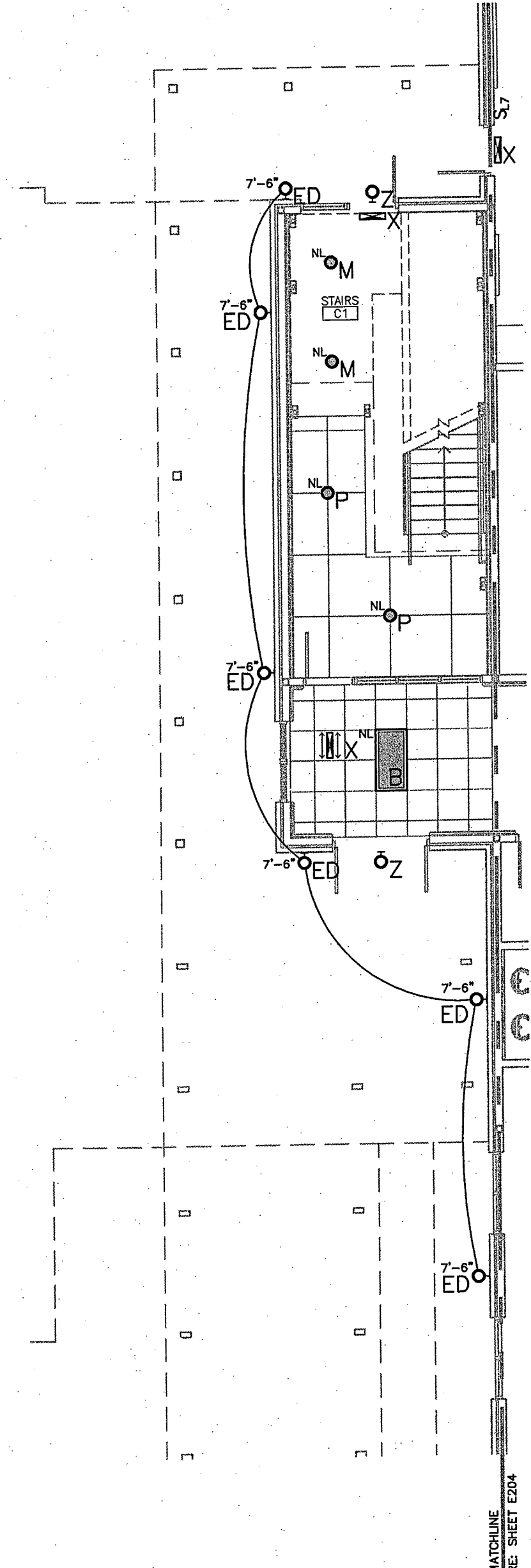


**1 LIGHTING PLAN (ALTERNATE)-
FIRST FLOOR WING 1300**
SCALE: 1/8" = 1'-0"

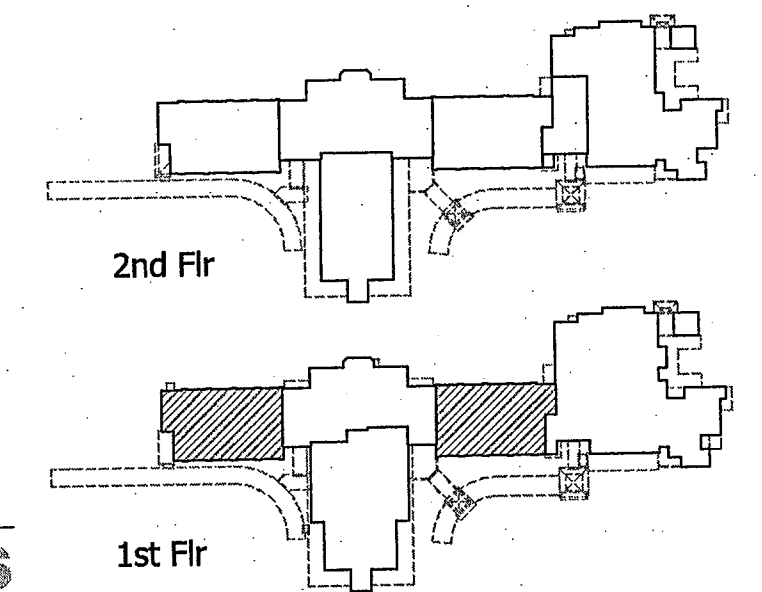


**2 LIGHTING PLAN-
FIRST FLOOR WING 1400**
SCALE: 1/8" = 1'-0"



**3 LIGHTING PLAN (BASE)-
FIRST FLOOR WING 1300**
SCALE: 1/8" = 1'-0"

- LIGHTING PLAN NOTES**
1. VERIFY THE EXACT LOCATION OF ALL LIGHT FIXTURES WITH THE ARCHITECTURAL REFLECTED CEILING PLAN.
 2. VERIFY THE EXACT LOCATION OF ALL LIGHT SWITCHES WITH THE ARCHITECT PRIOR TO ROUGH-IN.
 3. LIGHT FIXTURES WITH "NL" SERVE AS NIGHT LIGHTS AS WELL AS EMERGENCY LIGHTS AND SHALL REMAIN ON AT ALL TIMES.
 4. CONNECT ALL NIGHT LIGHT FIXTURES & EXIT SIGNS TOGETHER ON RELAYS #LCPA1-6 & 7.
 5. LIGHT FIXTURES SHOWN "SHADED" ARE ON EMERGENCY POWER.
 6. VERIFY THE EXACT LOCATION OF PHOTOCELLS WITH ARCHITECT PRIOR TO INSTALLATION.
 7. THE HEIGHT SHOWN NEXT TO THE EXTERIOR LIGHT FIXTURES IS FROM FINISHED FLOOR TO TOP OF THE FIXTURE, VERIFY THE EXACT HEIGHT/LOCATION WITH THE ARCHITECT PRIOR TO ROUGH-IN.
 8. VERIFY THE EXACT LOCATION OF CEILING MOUNT OCCUPANCY SENSORS WITH THE MANUFACTURER PRIOR TO INSTALLATION FOR MAXIMUM PERFORMANCE.
 9. WALL MOUNT TYPE "Z" EMERGENCY LIGHTS ABOVE DOORS ON THE EXTERIOR OF THE BUILDING & CONNECT TOGETHER ON CIRCUIT #HBI-23 (TYP. THIS SHEET).



Daniel T. Calongne
7911 Warrwood Blvd., Suite D
Baton Rouge, Louisiana 70809
voice (225)922-8223 fax (225)922-8414

ANDREW GASAWAY, JR., ARCHITECT AIA, APA
BRET GASAWAY, ARCHITECT, AIA, NCARB
CHRIS BANKSTON, ARCHITECT, AIA, NCARB, LEED AP

GGB
Gasaway Gasaway Bankston
Architects + Planners
1007 W. THOMAS ST., SUITE G
HAMMOND, LA 70401
986.345.5047
986.345.5040

JOSEPH B. LANCASTER
ELEMENTARY SCHOOL
ST. TAMMANY PARISH SCHOOL BOARD
MADISONVILLE, LOUISIANA
SIPSB PROJECT #0825

THIS DRAWING IS AN INSTRUMENT OF SERVICE, IS AND SHALL REMAIN THE PROPERTY OF THE ARCHITECT AND SHALL NOT BE REPRODUCED, PUBLISHED OR USED IN ANY WAY WITHOUT THE EXPRESS PERMISSION OF THE ARCHITECT.

PROJ. NO. **0825**
DATE: **06.25.09**

PROFESSIONAL OF RECORD
DANIEL T. CALONGNE
REG. NO. 15220
REGISTERED PROFESSIONAL ARCHITECT
STATE OF LOUISIANA

SHEET NO. **E203**

2nd Fl
1st Fl