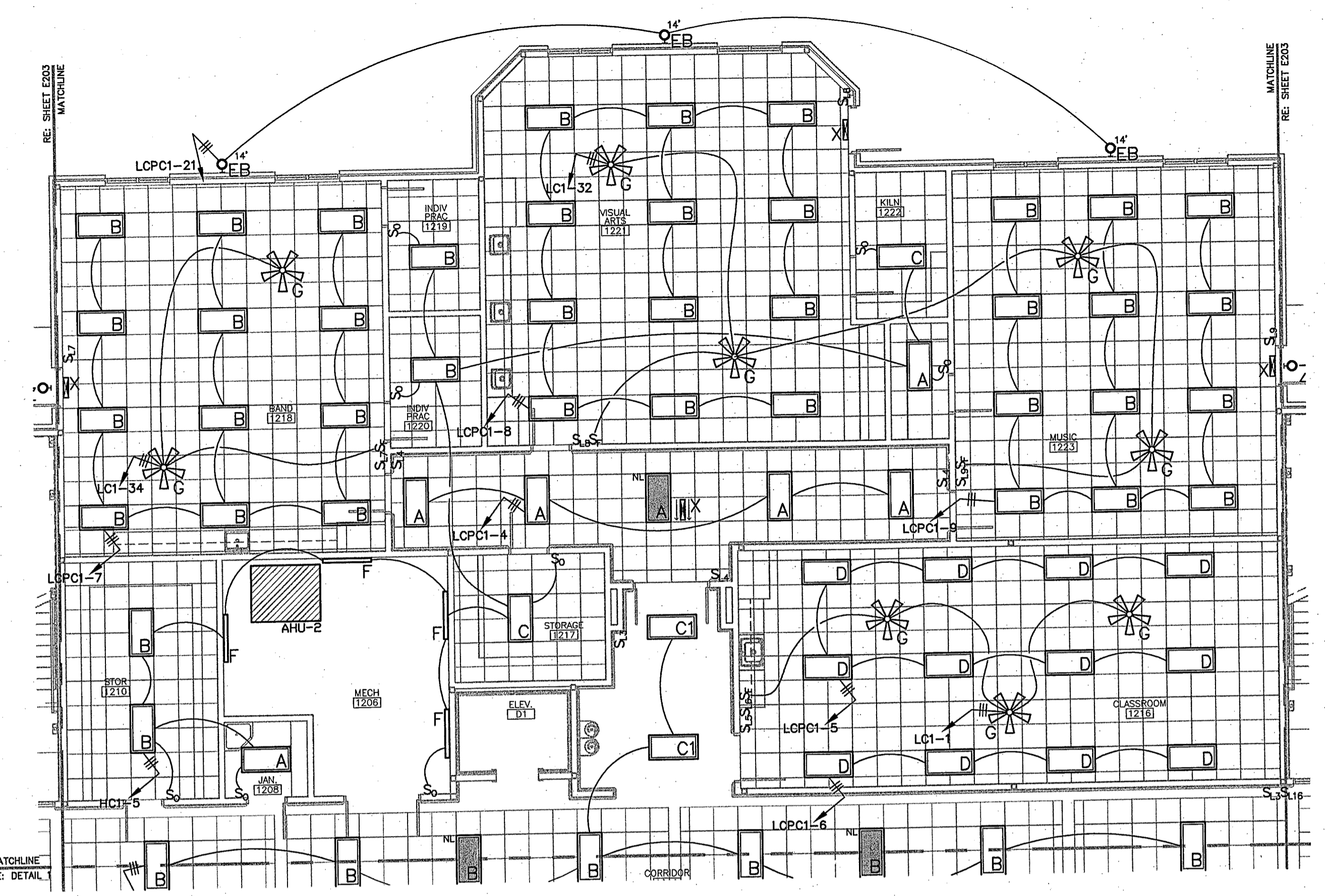


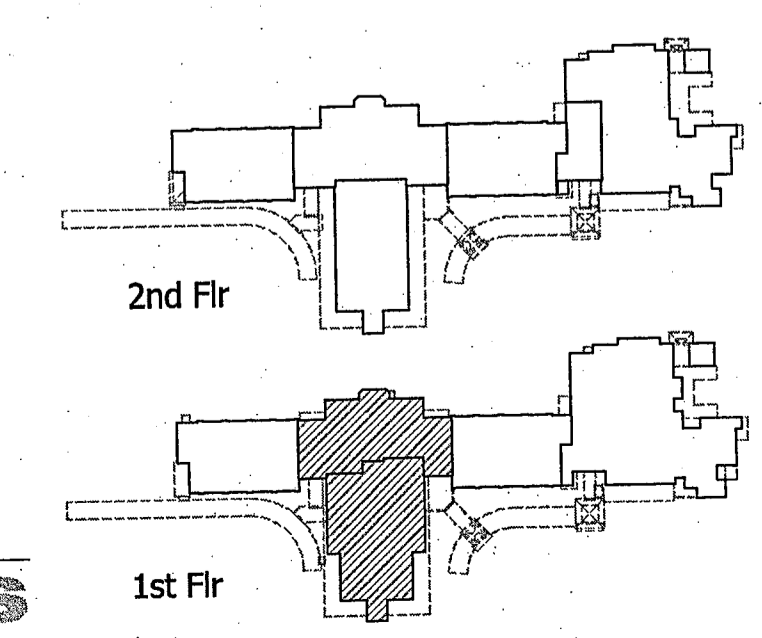


**LIGHTING PLAN-
FIRST FLOOR WING 1100**
SCALE: 1/8" = 1'-0"



**LIGHTING PLAN-
FIRST FLOOR WING 1200**
SCALE: 1/8" = 1'-0"

- LIGHTING PLAN NOTES**
1. VERIFY THE EXACT LOCATION OF ALL LIGHT FIXTURES WITH THE ARCHITECTURAL REFLECTED CEILING PLAN.
 2. VERIFY THE EXACT LOCATION OF ALL LIGHT SWITCHES WITH THE ARCHITECT PRIOR TO ROUGH-IN.
 3. LIGHT FIXTURES WITH "NL" SERVE AS NIGHT LIGHTS AS WELL AS EMERGENCY LIGHTS AND SHALL REMAIN ON AT ALL TIMES.
 4. CONNECT ALL NIGHT LIGHT FIXTURES & EXIT SIGNS TOGETHER ON RELAYS #LCPA-6 & 7.
 5. LIGHT FIXTURES SHOWN "SHADED" ARE ON EMERGENCY POWER.
 6. VERIFY THE EXACT LOCATION OF PHOTOCELLS WITH ARCHITECT PRIOR TO INSTALLATION.
 7. THE HEIGHT SHOWN NEXT TO THE EXTERIOR LIGHT FIXTURES IS FROM FINISHED FLOOR TO TOP OF THE FIXTURE, VERIFY THE EXACT HEIGHT/LOCATION WITH THE ARCHITECT PRIOR TO ROUGH-IN.
 8. VERIFY THE EXACT LOCATION OF CEILING MOUNT OCCUPANCY SENSORS WITH THE MANUFACTURER PRIOR TO INSTALLATION FOR MAXIMUM PERFORMANCE.
 9. WALL MOUNT TYPE "I2" EMERGENCY LIGHTS ABOVE DOORS ON THE EXTERIOR OF THE BUILDING & CONNECT TOGETHER ON CIRCUIT #HBI-25 (TYP. THIS SHEET).



AS Daniel Calongne
7911 Winwood Blvd., Suite D
Baton Rouge, Louisiana 70809
voice (225)222-2223 fax (225)222-2414

GGB
Gasaway | Gasaway | Bankston
Architects + Planners
1037 W. THOMAS ST., SUITE C
HAMMOND, LA 70401
985.345.6047
985.345.6060
FAX 985.345.6060

JOSEPH B. LANCASTER
ELEMENTARY SCHOOL
ST. TAMMANY PARISH SCHOOL BOARD
MADISONVILLE, LOUISIANA
STPSB PROJECT #0825

PROJ. NO. **0825**
DATE **06.25.09**

STATE OF LOUISIANA
DANIEL T. CALONGNE
REG. NO. 15220
PROFESSIONAL ENGINEER
MECHANICAL ENGINEERING

E204

THIS DRAWING IS AN INSTRUMENT OF SERVICE, IS AND SHALL REMAIN THE PROPERTY OF THE ARCHITECT AND SHALL NOT BE REPRODUCED, PUBLISHED OR USED IN ANY WAY WITHOUT THE EXPRESS PERMISSION OF THE ARCHITECT.