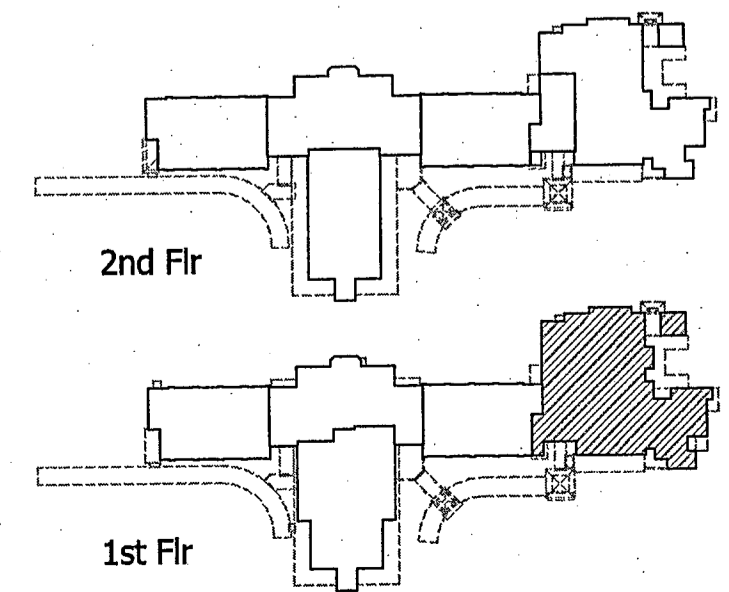


- LIGHTING PLAN NOTES**
1. VERIFY THE EXACT LOCATION OF ALL LIGHT FIXTURES WITH THE ARCHITECTURAL REFLECTED CEILING PLAN.
  2. VERIFY THE EXACT LOCATION OF ALL LIGHT SWITCHES WITH THE ARCHITECT PRIOR TO ROUGH-IN.
  3. LIGHT FIXTURES WITH "NL" SERVE AS NIGHT LIGHTS AS WELL AS EMERGENCY LIGHTS AND SHALL REMAIN ON AT ALL TIMES.
  4. CONNECT ALL NIGHT LIGHT FIXTURES & EXIT SIGNS TOGETHER ON RELAY.
  5. LIGHT FIXTURES SHOWN "SHADED" ARE ON EMERGENCY POWER.
  6. VERIFY THE EXACT LOCATION OF PHOTOCELLS WITH ARCHITECT PRIOR TO INSTALLATION.
  7. SUSPEND TYPE "L" TRACK LIGHTS 15' AFF TO BOTTOM OF TRACK.
  8. THE HEIGHT SHOWN NEXT TO THE EXTERIOR LIGHT FIXTURES IS FROM FINISHED FLOOR TO TOP OF THE FIXTURE; VERIFY THE EXACT HEIGHT/LOCATION WITH THE ARCHITECT PRIOR TO ROUGH-IN.
  9. VERIFY THE EXACT LOCATION OF CEILING MOUNT OCCUPANCY SENSORS WITH THE MANUFACTURER PRIOR TO INSTALLATION FOR MAXIMUM PERFORMANCE.
  10. WALL MOUNT TYPE "Z" EMERGENCY LIGHTS ABOVE DOORS ON THE EXTERIOR OF THE BUILDING & CONNECT TOGETHER ON CIRCUIT #HAI-14 (TYP. THIS SHEET).

NORTH  
**1 LIGHTING PLAN-  
 FIRST FLOOR WING 1500**  
 SCALE: 1/8" = 1'-0"



**ASPECT**  
 Daniel Calongne  
 7811 Winwood Blvd., Suite D  
 Baton Rouge, Louisiana 70809  
 voice (225)922-9023 fax (225)922-9414

ANDREW GASAWAY, JR., ARCHITECT, AIA, APA  
 BRETT GASAWAY, ARCHITECT, AIA, NCARB  
 CHRIS BANKSTON, ARCHITECT, AIA, NCARB, LEED AP

**GGB**  
**Gasaway | Gasaway | Bankston**  
 Architects + Planners  
 1007 W. THOMAS ST., SUITE G  
 HANNOOND, LA 70801  
 985.345.5047  
 985.345.5040

**JOSEPH B. LANCASTER  
 ELEMENTARY SCHOOL**  
 ST. TAMMANY PARISH SCHOOL BOARD  
 MADISONVILLE, LOUISIANA  
 STPSB PROJECT #0825

THIS DRAWING IS AN INSTRUMENT OF SERVICE, IS AND SHALL REMAIN THE PROPERTY OF THE ARCHITECT AND SHALL NOT BE REPRODUCED, PUBLISHED OR USED IN ANY WAY WITHOUT THE EXPRESS PERMISSION OF THE ARCHITECT.

PROJ. NO.	0825
DATE	06.25.09
REVISION	
RECORDED	
SHEET NO.	E205

STATE OF LOUISIANA  
 DANIEL T. CALONGNE  
 REG. NO. 15220  
 REGISTERED PROFESSIONAL ARCHITECT  
 BUSINESS AND PROFESSIONAL SERVICES