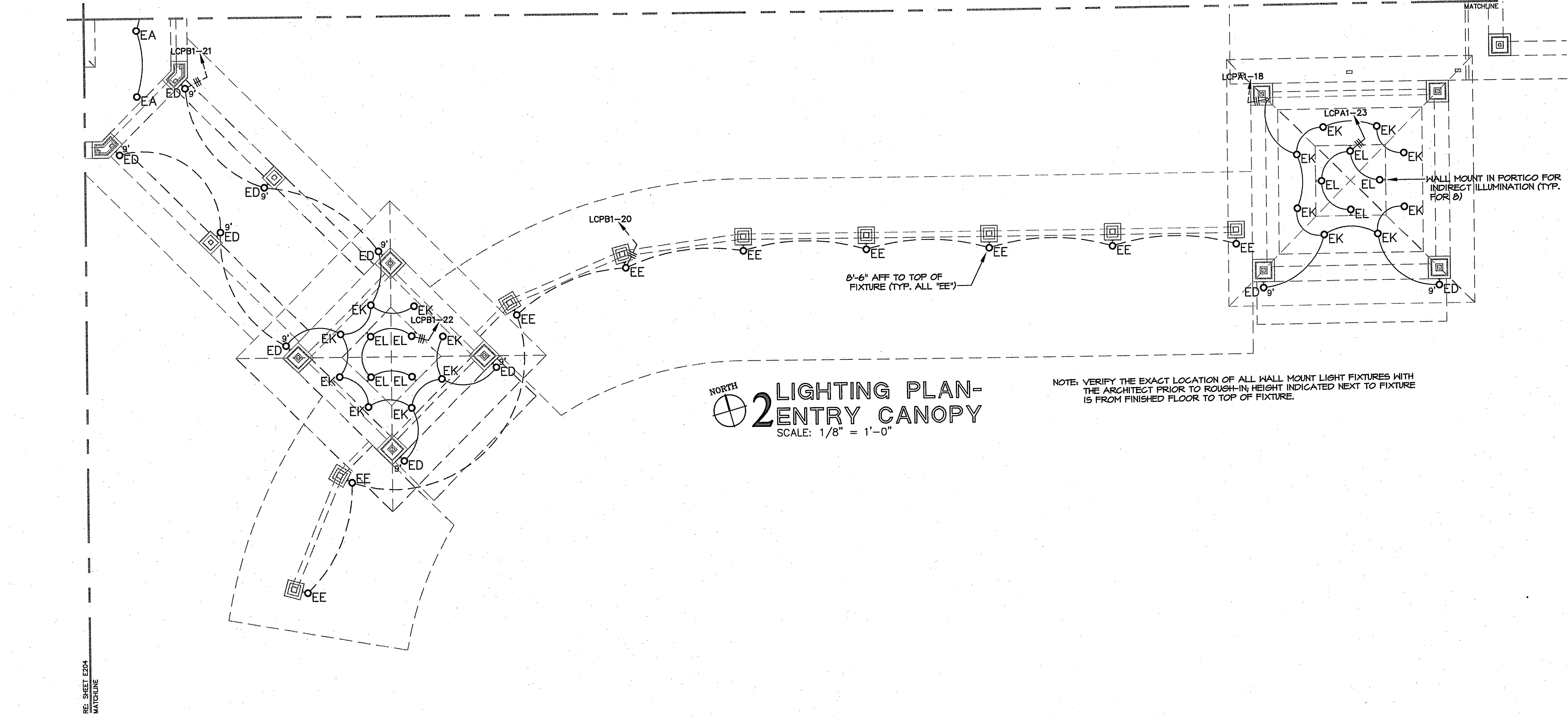
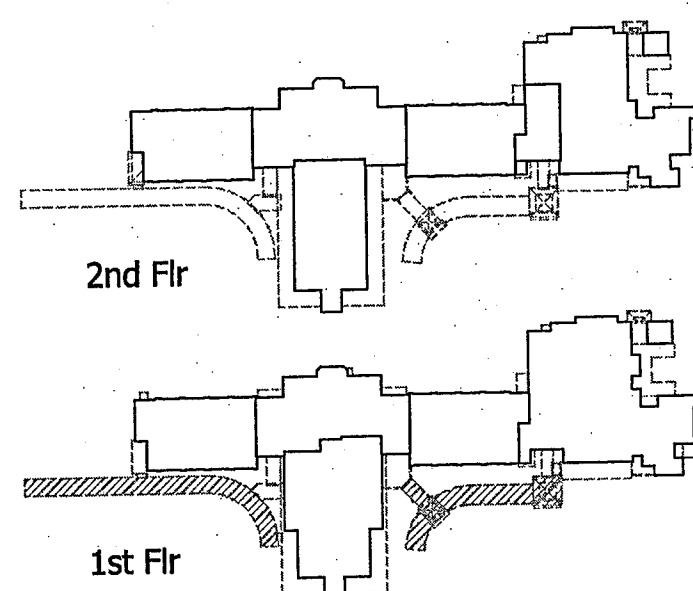


NORTH  
**1** LIGHTING PLAN -  
 BUS CANOPY  
 SCALE: 3/32" = 1'-0"



NORTH  
**2** LIGHTING PLAN -  
 ENTRY CANOPY  
 SCALE: 1/8" = 1'-0"

NOTE: VERIFY THE EXACT LOCATION OF ALL HALL MOUNT LIGHT FIXTURES WITH THE ARCHITECT PRIOR TO ROUGH-IN. HEIGHT INDICATED NEXT TO FIXTURE IS FROM FINISHED FLOOR TO TOP OF FIXTURE.



**AS Daniel Calongne**  
 7911 Wrenwood Blvd., Suite D  
 Baton Rouge, Louisiana 70809  
 voice (225)922-6223 fax (225)922-8414

© GASAWAY ■ BANKSTON ■ ARCHITECTS & PLANNERS  
 SHEET NO. **E206**  
 PROJECT NO. **0825**  
 DATE **06.25.09**  
 STATE OF LOUISIANA  
 DANIEL T. CALONGNE  
 REG. NO. 15270  
 PROFESSIONAL SEAL  
 ARCHITECT

**JOSEPH B. LANCASTER**  
**ELEMENTARY SCHOOL**  
 ST. TAMMANY PARISH SCHOOL BOARD  
 MADISONVILLE, LOUISIANA  
 STPSB PROJECT #0825

**GGP**  
**Gasaway | Gasaway | Bankston**  
**Architects + Planners**  
 1007 W. THOMAS ST., SUITE G  
 HANCOCK, LA 70401  
 985.345.6047  
 985.345.6040

ANDREW GASAWAY, JR., ARCHITECT, AIA, APA  
 BRETT GASAWAY, ARCHITECT, AIA, NCARB  
 CHRIS BANKSTON, ARCHITECT, AIA, NCARB, LEED AP