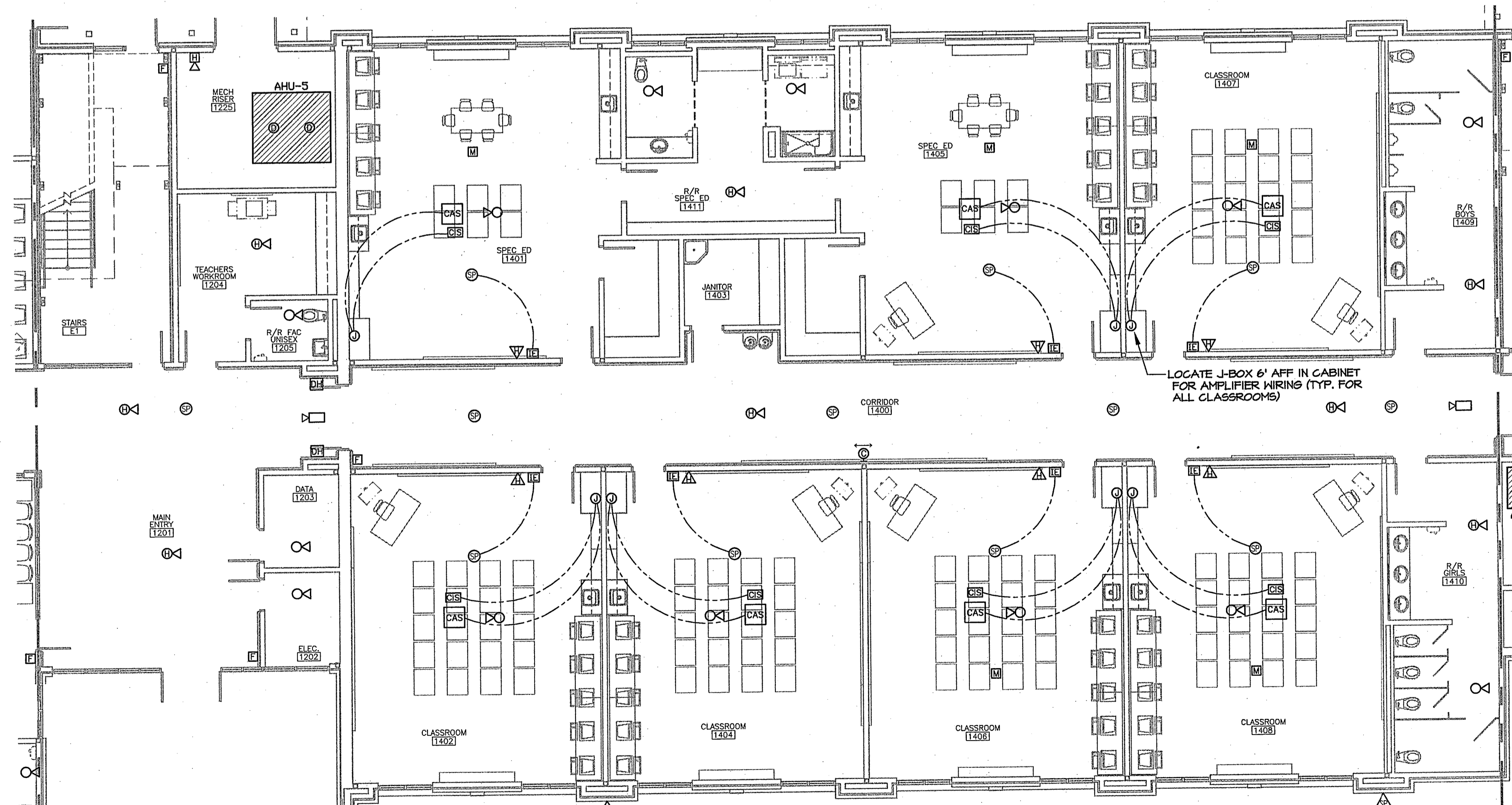


**1 SPECIAL SYSTEMS PLAN (ALTERNATE)-  
FIRST FLOOR WING 1300**  
SCALE: 1/8" = 1'-0"

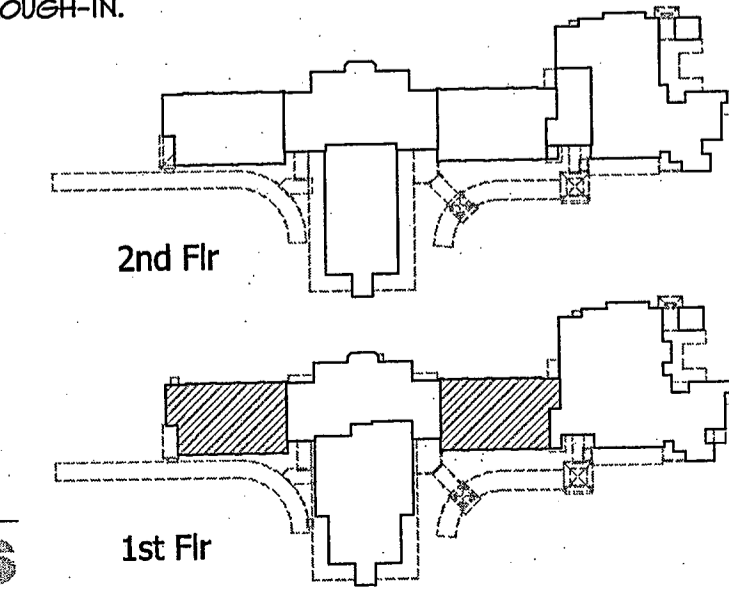


**3 SPECIAL SYSTEMS PLAN (BASE)-  
FIRST FLOOR WING 1300**  
SCALE: 1/8" = 1'-0"



**2 SPECIAL SYSTEMS PLAN-  
FIRST FLOOR WING 1400**  
SCALE: 1/8" = 1'-0"

- SPECIAL SYSTEMS PLAN NOTES**
1. LOCATE ALL FIRE ALARM SYSTEM DEVICES PER ADA REQUIREMENTS.
  2. COORDINATE THE LOCATION OF ALL CEILING MOUNTED DEVICES WITH THE ARCHITECTURAL REFLECTED CEILING PLAN.
  3. SECURITY SYSTEM FURNISHED, INSTALLED AND CONNECTED BY ELECTRICAL CONTRACTOR.
  4. ALL MOTION DETECTOR TEST SWITCHES SHALL BE TURNED OFF PRIOR TO TURNING THE SECURITY SYSTEM OVER TO THE OWNER.
  5. WALL MOUNT OUTDOOR SPEAKERS 10' AFF TO BOTTOM; VERIFY THE EXACT HEIGHT/ LOCATION OF ALL EXTERIOR FLUSH WALL MOUNT INTERCOM SPEAKERS WITH THE ARCHITECT PRIOR TO INSTALLATION.
  6. COORDINATE THE EXACT LOCATION OF SECURITY SYSTEM MOTION DETECTORS AND KEYPADS WITH THE OWNER PRIOR TO ROUGH-IN.
  7. CONNECT ALL SMOKE DAMPERS TO THE FIRE ALARM SYSTEM; COORDINATE WITH MECH. CONTR. EXACT LOCATIONS OF ALL DAMPERS.
  8. ROUTE ONE (1) GREEN CAT 6 CABLE ABOVE THE CEILING JOIST FROM EACH CAMERA LOCATION SHOWN TO THE NEAREST DATA ROOM; LEAVE 12' OF SLACK CABLE AT EACH END FOR THE INTERIOR CAMERA LOCATIONS; LEAVE 12' OF SLACK CABLE AT THE DATA ROOM & 20' OF SLACK CABLE AT THE CAMERA FOR THE EXTERIOR CAMERA LOCATIONS; LOCATE J-BOXES FOR EXTERIOR CAMERAS (TOTAL OF 4) 10' AFF- VERIFY EXACT LOCATION WITH THE ARCHITECT PRIOR TO ROUGH-IN.
  9. COORDINATE EXACT LOCATION OF ALL CLOCKS WITH THE ARCHITECT PRIOR TO ROUGH-IN.



**Daniel T. Calongne**  
7911 Winwood Blvd., Suite D  
Baton Rouge, Louisiana 70809  
Phone (225)922-9227 Fax (225)922-9414

ANDREW GASAWAY, JR., ARCHITECT, AIA, APA  
 BRET GASAWAY, ARCHITECT, AIA, NCARB  
 CHRIS BANKSTON, ARCHITECT, AIA, NCARB, LEED AP

**GGB**  
**Gasaway | Gasaway | Bankston**  
 Architects + Planners  
 1037 W. THOMAS ST., SUITE G  
 HAMMOND, LA 70401  
 985.345.5247  
 985.345.5240

JOSEPH B. LANCASTER  
 ELEMENTARY SCHOOL  
 ST. TAMMANY PARISH SCHOOL BOARD  
 MADISONVILLE, LOUISIANA  
 STPSB PROJECT #0825

THIS DRAWING IS AN INSTRUMENT OF SERVICE, IS AND SHALL REMAIN THE PROPERTY OF THE ARCHITECT AND SHALL NOT BE REPRODUCED, PUBLISHED OR USED IN ANY WAY WITHOUT THE EXPRESS PERMISSION OF THE ARCHITECT.

PROJ. NO.	0825
REVISION DATE	06.25.09

STATE OF LOUISIANA  
 DANIEL T. CALONGNE  
 REG. NO. 15220  
 PROFESSIONAL SEAL

**E207**