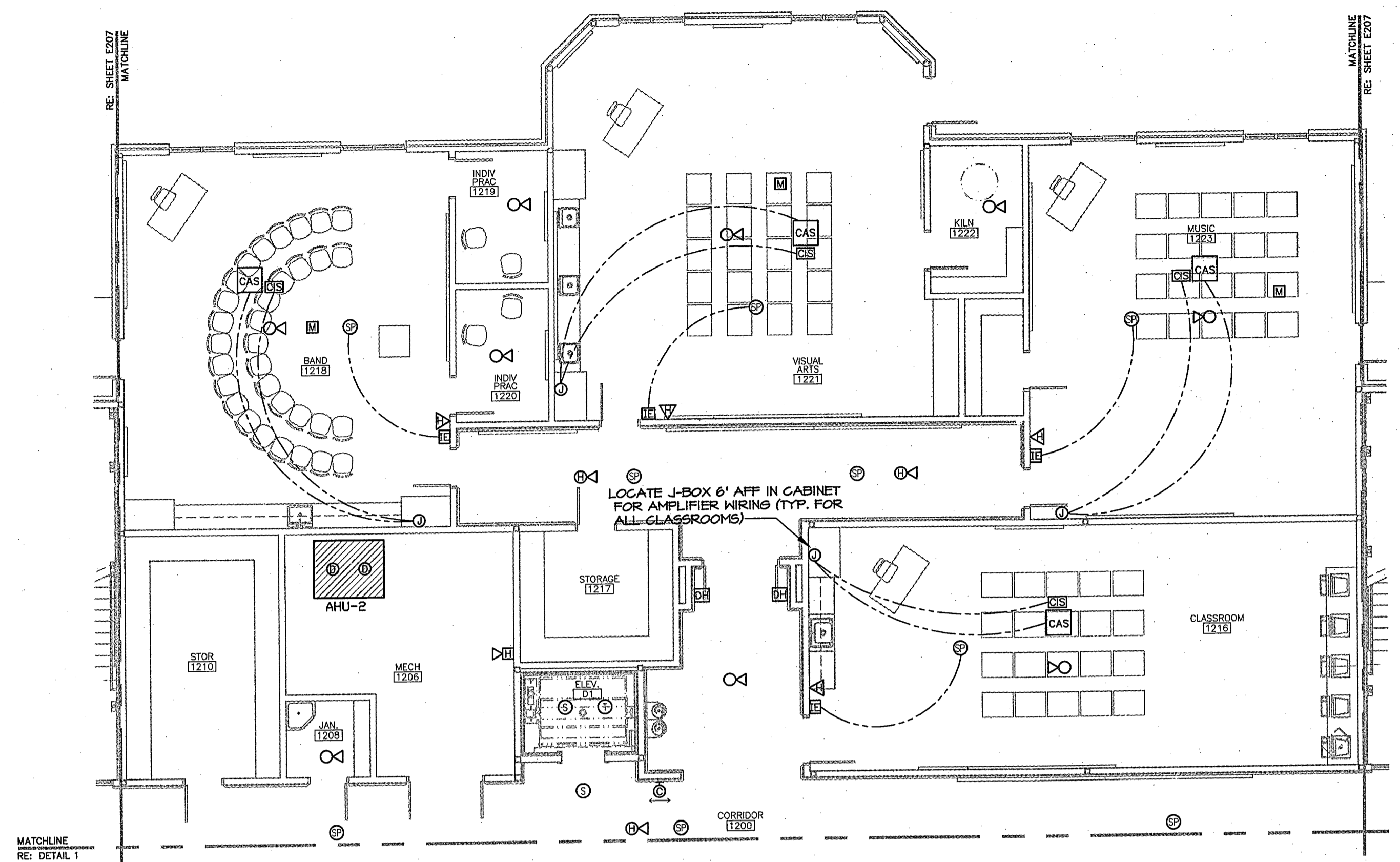
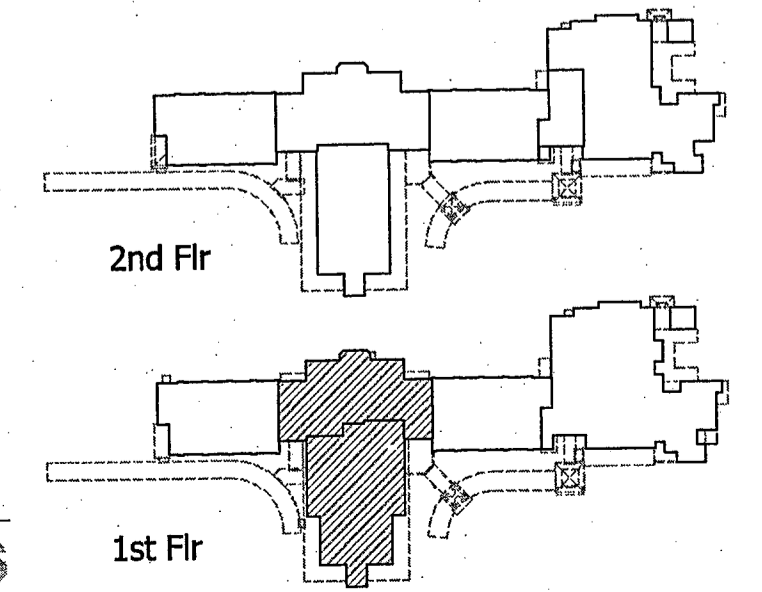


1 SPECIAL SYSTEMS PLAN-
FIRST FLOOR WING 1100
SCALE: 1/8" = 1'-0"



2 SPECIAL SYSTEMS PLAN-
FIRST FLOOR WING 1200
SCALE: 1/8" = 1'-0"

- SPECIAL SYSTEMS PLAN NOTES**
1. LOCATE ALL FIRE ALARM SYSTEM DEVICES PER ADA REQUIREMENTS.
 2. COORDINATE THE LOCATION OF ALL CEILING MOUNTED DEVICES WITH THE ARCHITECTURAL REFLECTED CEILING PLAN.
 3. SECURITY SYSTEM FURNISHED, INSTALLED AND CONNECTED BY ELECTRICAL CONTRACTOR.
 4. ALL MOTION DETECTOR TEST SWITCHES SHALL BE TURNED OFF PRIOR TO TURNING THE SECURITY SYSTEM OVER TO THE OWNER.
 5. WALL MOUNT OUTDOOR SPEAKERS 10' AFF TO BOTTOM; VERIFY THE EXACT HEIGHT/ LOCATION OF ALL EXTERIOR FLUSH WALL MOUNT INTERCOM SPEAKERS WITH THE ARCHITECT PRIOR TO INSTALLATION.
 6. COORDINATE THE EXACT LOCATION OF SECURITY SYSTEM MOTION DETECTORS AND KEYPADS WITH THE OWNER PRIOR TO ROUGH-IN.
 7. CONNECT ALL SMOKE DAMPERS TO THE FIRE ALARM SYSTEM; COORDINATE WITH MECH. CONTR. EXACT LOCATIONS OF ALL DAMPERS.
 8. ROUTE ONE (1) GREEN CAT 6 CABLE ABOVE THE CEILING JOIST FROM EACH CAMERA LOCATION SHOWN TO THE NEAREST DATA ROOM; LEAVE 12' OF SLACK CABLE AT EACH END FOR THE INTERIOR CAMERA LOCATIONS; LEAVE 12' OF SLACK CABLE AT THE DATA ROOM & 20' OF SLACK CABLE AT THE CAMERA FOR THE EXTERIOR CAMERA LOCATIONS. LOCATE J-BOXES FOR EXTERIOR CAMERAS (TOTAL OF 4) 10' AFF-VERIFY EXACT LOCATION WITH THE ARCHITECT PRIOR TO ROUGH-IN.
 9. COORDINATE EXACT LOCATION OF ALL CLOCKS WITH THE ARCHITECT PRIOR TO ROUGH-IN.



ASCC Daniel T. Calongne
7911 Westwood Blvd., Suite D
Baton Rouge, Louisiana 70809
voice (225)925-0223 fax (225)925-9414

ANDREW GASAWAY, JR., ARCHITECT, AIA, APA
 BRIET GASAWAY, ARCHITECT, AIA, NCARB
 CHRIS BANKSTON, ARCHITECT, AIA, NCARB, LEED AP

GGB
Gasaway | Gasaway | Bankston
 Architects + Planners
 1027 W. THOMAS ST., SUITE G
 HANNOOND, LA 70401
 985.345.5047
 985.345.5040

JOSEPH B. LANCASTER
ELEMENTARY SCHOOL
 ST. TAMMANY PARISH SCHOOL BOARD
 MADISONVILLE, LOUISIANA
 STPSB PROJECT #0825

THIS DRAWING IS AN INSTRUMENT OF SERVICE, IS AND SHALL REMAIN THE PROPERTY OF THE ARCHITECT AND SHALL NOT BE REPRODUCED, PUBLISHED OR USED IN ANY WAY WITHOUT THE EXPRESS PERMISSION OF THE ARCHITECT.

PROJ. NO.	0825
DATE	06.25.09
REVISIONS	
PROFESSIONAL OF RECORD	DANIEL T. CALONGNE REG. NO. 15220 ARCHITECT
SHEET NO.	E208