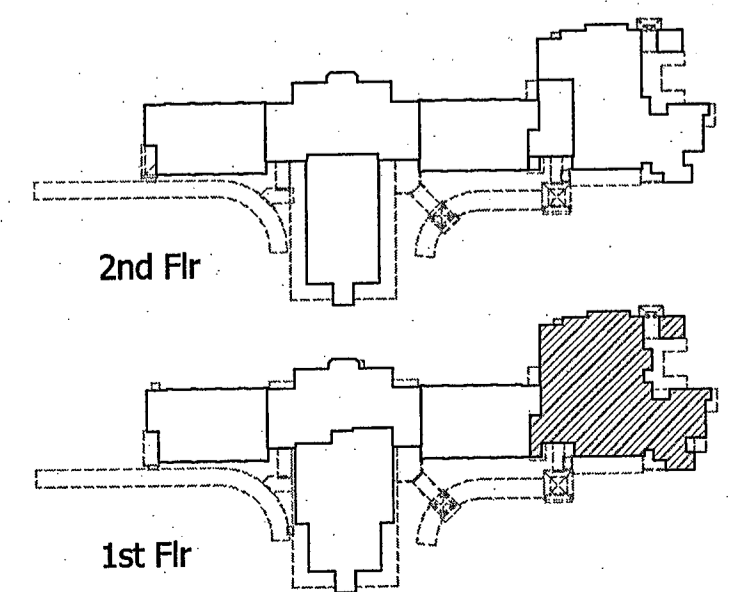


- SPECIAL SYSTEMS PLAN NOTES**
1. LOCATE ALL FIRE ALARM SYSTEM DEVICES PER ADA REQUIREMENTS.
 2. COORDINATE THE LOCATION OF ALL CEILING MOUNTED DEVICES WITH THE ARCHITECTURAL REFLECTED CEILING PLAN.
 3. SECURITY SYSTEM FURNISHED, INSTALLED AND CONNECTED BY ELECTRICAL CONTRACTOR.
 4. ALL MOTION DETECTOR TEST SWITCHES SHALL BE TURNED OFF PRIOR TO TURNING THE SECURITY SYSTEM OVER TO THE OWNER.
 5. WALL MOUNT OUTDOOR SPEAKERS 10' AFF TO BOTTOM; VERIFY THE EXACT HEIGHT/ LOCATION OF ALL EXTERIOR FLUSH WALL MOUNT INTERCOM SPEAKERS WITH THE ARCHITECT PRIOR TO INSTALLATION.
 6. COORDINATE THE EXACT LOCATION OF SECURITY SYSTEM MOTION DETECTORS AND KEYPADS WITH THE OWNER PRIOR TO ROUGH-IN.
 7. CONNECT ALL SMOKE DAMPERS TO THE FIRE ALARM SYSTEM; COORDINATE WITH MECH. CONTR. EXACT LOCATIONS OF ALL DAMPERS.
 8. ROUTE ONE (1) GREEN CAT 6 CABLE ABOVE THE CEILING JOIST FROM EACH CAMERA LOCATION SHOWN TO THE NEAREST DATA ROOM; LEAVE 12' OF SLACK CABLE AT EACH END FOR THE INTERIOR CAMERA LOCATIONS; LEAVE 12' OF SLACK CABLE AT THE DATA ROOM & 20' OF SLACK CABLE AT THE CAMERA FOR THE EXTERIOR CAMERA LOCATIONS. LOCATE J-BOXES FOR EXTERIOR CAMERAS (TOTAL OF 4) 10' AFF- VERIFY EXACT LOCATION WITH THE ARCHITECT PRIOR TO ROUGH-IN.
 4. COORDINATE EXACT LOCATION OF ALL CLOCKS WITH THE ARCHITECT PRIOR TO ROUGH-IN.

**1 SPECIAL SYSTEMS PLAN-
FIRST FLOOR WING 1500**
SCALE: 1/8" = 1'-0"



ASCC
Daniel T. Calongne
7011 W. Mainwood Blvd., Suite D
Baton Rouge, Louisiana 70809
phone (225)952-9223 fax (225)952-9414

ANDREW GASAWAY, JR., ARCHITECT, AIA, APA
BRET GASAWAY, ARCHITECT, AIA, NCARB
CHRIS BANKSTON, ARCHITECT, AIA, NCARB, LEED AP

GGB
Gasaway | Gasaway | Bankston
Architects + Planners
1007 W. THOMAS ST., SUITE G
HAMMOCK, LA 70401
985.345.5047
985.345.5040

**JOSEPH B. LANCASTER
ELEMENTARY SCHOOL
ST. TAMMANY PARISH SCHOOL BOARD**
MADISONVILLE, LOUISIANA
STPSB PROJECT #0825

THIS DRAWING IS AN INSTRUMENT OF SERVICE, IS AND SHALL REMAIN THE PROPERTY OF THE ARCHITECT AND SHALL NOT BE REPRODUCED, PUBLISHED OR USED IN ANY WAY WITHOUT THE EXPRESS PERMISSION OF THE ARCHITECT.

PROJ. NO. **0825**
DATE **06.25.09**

PROFESSIONAL OF RECORD
DANIEL T. CALONGNE
REG. NO. 15220
REGISTERED PROFESSIONAL ENGINEER
MECHANICAL
STATE OF LOUISIANA

SHEET NO. **E209**