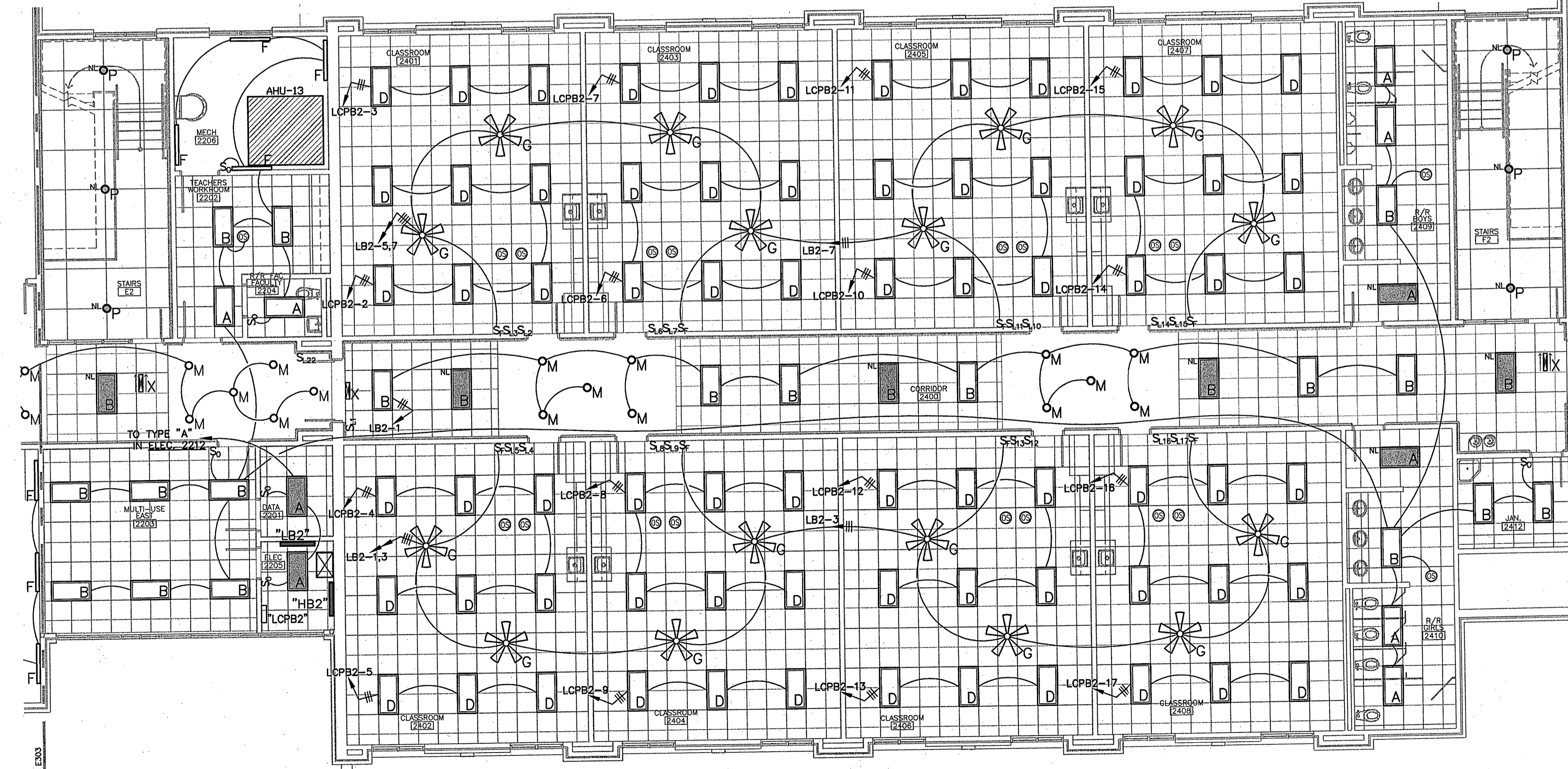
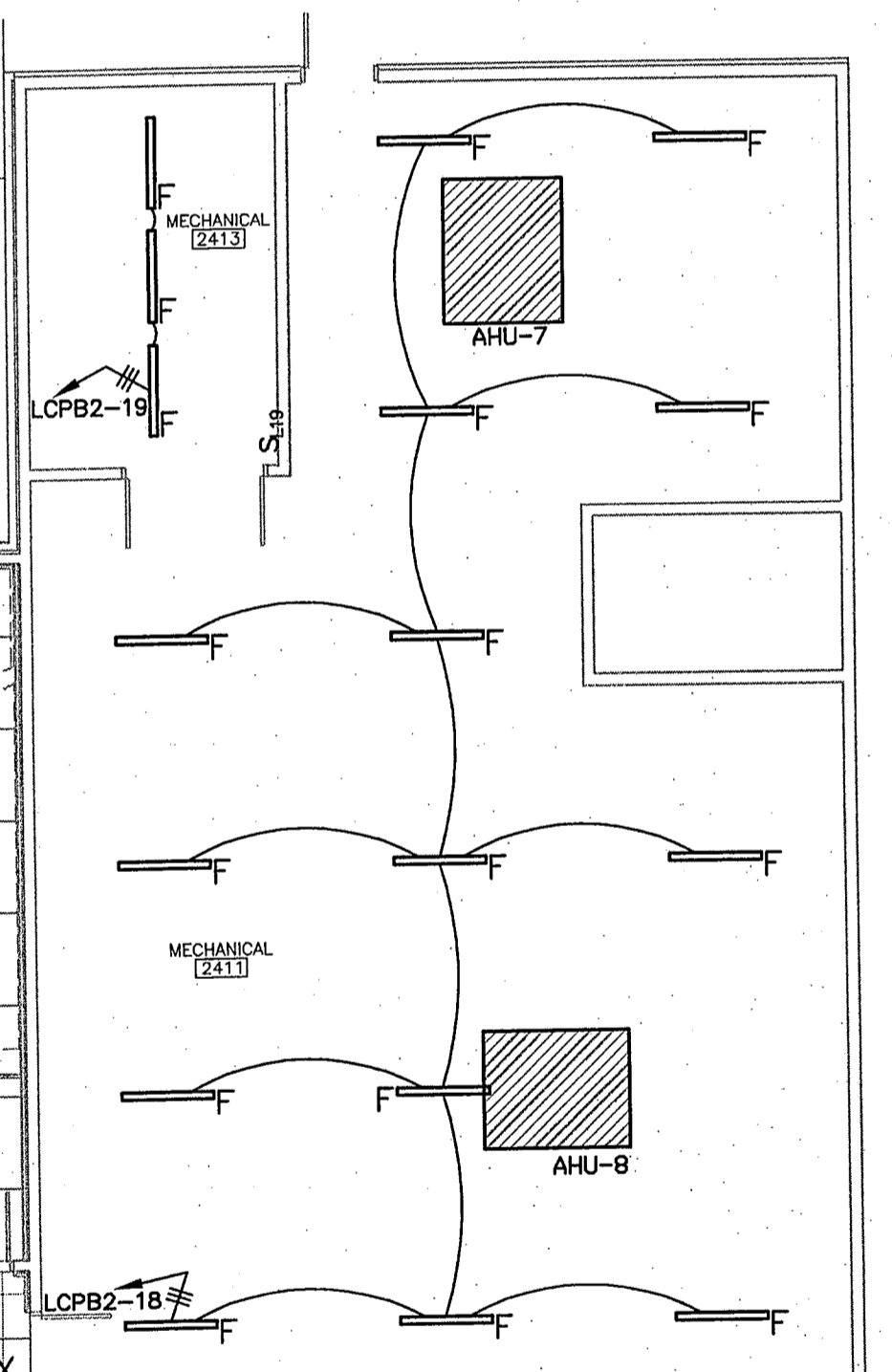


**1 LIGHTING PLAN (ALTERNATE)-
SECOND FLOOR WING 2300**
SCALE: 1/8" = 1'-0"

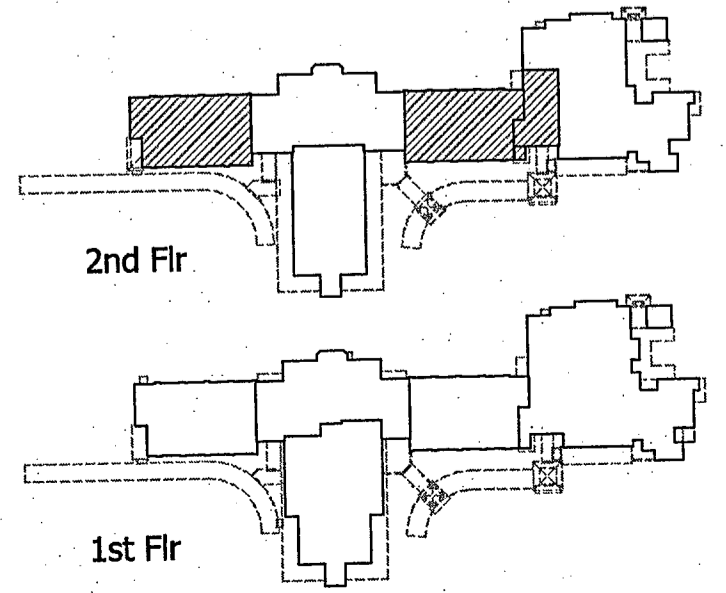
- LIGHTING PLAN NOTES**
1. VERIFY THE EXACT LOCATION OF ALL LIGHT FIXTURES WITH THE ARCHITECTURAL REFLECTED CEILING PLAN.
 2. VERIFY THE EXACT LOCATION OF ALL LIGHT SWITCHES WITH THE ARCHITECT PRIOR TO ROUGH-IN.
 3. LIGHT FIXTURES WITH "NL" SERVE AS NIGHT LIGHTS AS WELL AS EMERGENCY LIGHTS AND SHALL REMAIN ON AT ALL TIMES.
 4. CONNECT ALL NIGHT LIGHT FIXTURES & EXIT SIGNS TOGETHER ON RELAYS #LCPD2-25 & 26.
 5. LIGHT FIXTURES SHOWN "SHADED" ARE ON EMERGENCY POWER.
 6. LOW-VOLTAGE LIGHT SWITCH SHALL CONTROL OCCUPANCY SENSOR; WHEN SOMEONE ENTERS THE ROOM THE LIGHTS SHALL AUTOMATICALLY COME ON (CONTROLLED BY OCCUPANCY SENSOR), THE LIGHTS CAN THEN BE MANUALLY TURNED OFF BY THE LOW-VOLTAGE LIGHT SWITCHES. AFTER THE ROOM IS UNOCCUPIED FOR A PERIOD OF TIME THE OCCUPANCY SENSORS WILL, ONCE AGAIN TAKE CONTROL OF THE LIGHTS. THIS IS TYPICAL FOR ALL ROOMS WITH CEILING MOUNT OCCUPANCY SENSORS AND LOW-VOLTAGE LIGHT SWITCHES.



**2 LIGHTING PLAN-
SECOND FLOOR WING 2400**
SCALE: 1/8" = 1'-0"



**3 LIGHTING PLAN (BASE)-
SECOND FLOOR
WING 2300**
SCALE: 1/8" = 1'-0"



ANDREW GASAWAY, JR. ARCHITECT AIA, APA
BRIET GASAWAY, ARCHITECT, AIA, NCARB
CHRIS BANKSTON, ARCHITECT, AIA, NCARB, LEED AP

GGB
Gasaway | Gasaway | Bankston
Architects + Planners
1037 W. THOMAS ST., SUITE G
HAWKINS, LA 70401
985.345.5047
985.345.5000

**JOSEPH B. LANCASTER
ELEMENTARY SCHOOL**
ST. TAMMANY PARISH SCHOOL BOARD
MADISONVILLE, LOUISIANA
STPSB PROJECT #0825

THIS DRAWING IS AN INSTRUMENT OF SERVICE, IS AND SHALL REMAIN THE PROPERTY OF THE ARCHITECT AND SHALL NOT BE REPRODUCED, PUBLISHED OR USED IN ANY WAY WITHOUT THE EXPRESS PERMISSION OF THE ARCHITECT.

PROJ. NO. **0825**

REVISIONS
DATE
REVISED DATE
06.25.09

PROFESSIONAL OF RECORD
REGISTERED PROFESSIONAL ENGINEER
STATE OF LOUISIANA
DANIEL T. CALONGNE
REG. NO. 15220
RECEIVED
PROJECT NO. E302
DATE 06/25/09

SHEET NO. **E302**

ASPECT
Daniel T. Calongne
7911 Winwood Blvd., Suite D
Baton Rouge, Louisiana 70809
voice (225) 982-9202 fax (225) 982-8414